

We Create Community

CITY OF LONG BEACH PARKS, RECREATION
& MARINE

FEB 25 | VOLUME 14
ISSUE 2

SKATE PARK FEASIBILITY STUDY GUIDES FUTURE SKATE PARK DEVELOPMENT



Parks, Recreation and Marine (PRM) seeks to ensure that there are sufficient well-resourced skate parks in

all parts of the city to increase youth participation in sports and recreation, and to provide spaces and programming that serve Long Beach residents of all ages at accessible times and locations. This goal is in accordance with the PRM Strategic Plan (Goal #2) and in alignment with the City's Framework for Reconciliation and the Equity Toolkit.

In May 2024, the Long Beach City Council requested the City Manager to work with PRM and report back on the feasibility of potential new sites and specifications for skate parks within the city of Long Beach.

A steering committee consisting of residents and community members involved in skateboarding, and staff from the City's Office of Youth Development and PRM created and distributed a community feedback survey, analyzed survey results, visited potential skate park sites, and provided input to the development of a feasibility study.

A total of 650 surveys were completed. Overall 87 percent of respondents expressed support for additional skate

parks and 55 percent of respondents stated that they had no concerns about building additional skate parks. Safety was mentioned as a top concern for 29 percent of the respondents. Over half of respondents stated that they would like a skate park within a 10 to 15 minute walk.

Based on the results of the community survey, the Beachfront, Heartwell Park, Los Cerritos Park, and Recreation Park were identified as possible sites for new skate parks based on being accessible with available parking and in a safe location with a welcoming and supportive community. Amenities desired at each location included access to restrooms, availability of shade, drinking fountains/water bottle filling stations, lighting, and a seating area.

It is believed that new skate parks can be delivered with a combination of grants and local funding that support recreation and park infrastructure. A formal feasibility analysis to further explore the four proposed sites will be needed as well as determining funding for a consultant.

New skate parks in Long Beach would provide multiple recreational and health benefits in under-resourced areas, in accordance with the City's approach to equity.

Director's Corner

BRENT DENNIS, DIRECTOR, LONG BEACH PARKS, RECREATION & MARINE



Even though February is a shorter month, our Parks, Recreation, Marine and Animal Care Services team members have work and action plans to make the most of the 28 days

ahead of us. Our park and beach maintenance teams are diligent in keeping our public spaces and facilities, clean, safe, welcoming, and beautiful. Animal Care Services team members are preparing for kitten season while managing the ongoing intake of dogs that seem to cycle through the peaks and valleys of kennel space. Our fun-loving Community Recreation Services team has developed a great array of Black History Month celebrations atop of the launching of Spring program and class registrations. The Business Operations team is ramping up the efforts of recruiting and onboarding new full-time staff as well as preparing for summer hiring. What an awesome team we have, dedicated to the very best of service across Long Beach!

Our Employee Recognition Committee, under the new leadership of Community Recreation Services Bureau Manager Gladys Kaiser, has a bounty of great new appreciation and camaraderie-building programs and special events. Gladys is bringing and welcoming exciting new ideas with an ERC that has seen expanded representation from all of our Department bureaus. The current promotion of Valentine Grams is a great example of a popular seasonal holiday with some fun new dimensions that helps raise funds for some of our major Department events later in the calendar year.

**Parks
Make
Life
Better!**

February promises to be a busy, but important wintertime month. Recalling that Groundhog Day results suggest six more weeks of winter weather, we do hope for ample winter rainfall to help keep our parkland green and vibrant. Thanks to each of our department team members for your contributions to a fun February. Parks Make Life Better and Parks Make Long Beach!

LONG BEACH PARKS, RECREATION & MARINE



FOR THE LATEST ON
**PARK CLOSURES
DUE TO WEATHER**
PLEASE VISIT OUR FACEBOOK PAGE

[Facebook.com/LongBeachParks](https://www.facebook.com/LongBeachParks)

PARKS, RECREATION & MARINE SPRING CLASSES OFFER A WIDE RANGE OF ACTIVITIES



Registration is going on now for recreation classes offered by the Long Beach

Parks, Recreation and Marine (PRM). More than 700 activities in art, music, nature, fitness, special interest subjects, adult sports leagues and aquatics will begin in March and continue through May 2025. The upcoming classes for spring include options for every age range, including:

PRESCHOOL

Little Music Makers: Intro class with songs, drum circles and more. (ages 3 to 6 years).

Preschool Cooking Thyme: Basic food preparation and safety tips. (ages 2 years, 6 months to 5 years).

Tot Soccer: Beginning skills class. (ages 3 years, six months to 4 years).

YOUTH

Math Development 2-6, teacher structured (ages 6 years, 6 months to 11 years).

Reading Development K-2: Spelling, vocabulary and fluency (ages 4 years, 6 months to 8 years).

All About Dough: Instruction for bread, pizza and other dough creations (ages 8 to 15 years).

Hip Hop Dance: Street style dances, funky combinations and more (ages 6 to 12 years).

Jammin' Music Glee Club: Group singing, warmups, pitch, light choreography and more (ages 5 to 6 years).

TEENS AND ADULTS

Ceramics Workshop: Coiling, slabbing, wheel glazing and sculpture (ages 16 years and older).

Yoga with Lacey: Learn poses focused on strength, stretching and balance (ages 14 years and older).

Latin Rhythm Dance Learn Salsa, Rhumba, Swing and more (ages 18 years and older).

Karate: Teaches blocks, punches, strikes and kicks (ages 13 years and older).

ADULTS AGES 50 AND OLDER

Round Dance, Intermediate/Advanced: Drop-in, fee per person, per class.

Gentle Yoga, All Levels: Improve flexibility, strength and balance.

Zumba® Gold Toning: Great body workout with Salsa, Tango, Cha Cha and more.

Residents can register for classes online, in person or by mail:

Online: Register anytime on LBParks.org.

By Mail: Send the completed registration form on page 55 in the Recreation Connection and payment to: City of Long Beach, 2760 Studebaker Rd., Long Beach, CA 90815. Please write address, phone number and class numbers on the check.

In Person: Bring the completed registration form and payment to the PRM Registration Reservations Office (2760 Studebaker Rd.) weekdays between 8 a.m. and 5 p.m. For more information, call 562.570.3111.

THREE PRM SITES MOVE TO NEW CASHLESS PARK ENTRY PAYMENT

Parks, Recreation and Marine (PRM) is following the practice of the National Park System and moving to cashless

park entry for El Dorado East Regional Park, El Dorado Nature Center and Belmont Plaza Pool. Cashless entry reduces transaction times at park entry stations, improves accountability and consistency and reduces chances of errors.



Entry booths at these locations will only accept cashless payment including debit, credit, prepaid credit cards and smart pay. Park patrons who do not have access to cashless payment options may purchase day tickets at the El Dorado East Regional Park Office or El Dorado Nature Center Visitors Center located directly inside the parks' entries. Day tickets and annual passes must be displayed in vehicles while visiting the parks.

Patrons wishing to purchase annual passes may also do so at the park office locations.

Also now in effect, Belmont Pool patrons should expect to pay for swimming programs with a credit or debit card at the pool entry booth. The alternative cash payment option will still be available for those who need it at the pool office, located just behind the entry booth.

Cashless parking is already in use at City beaches and other paid parking facilities and locations.

For more information about El Dorado East Regional Park and Nature Center, park patrons may call 562.570.1745 between 8 a.m. and 5 p.m. For more information about Belmont Plaza Pool, people may call 562.570.1806.

EL DORADO EAST REGIONAL PARK FUTURE IMPROVEMENTS UNDERWAY

The El Dorado East Regional Park Paving, Wayfinding and Parking Improvements project will create a

safer, more accessible and enjoyable experience for visitors to the Regional Park.

The phased project began in January with resurfacing deteriorated roadways and parking lots and restriping the lots to ensure safer, smoother and more accessible driving conditions within the park.

New signage and wayfinding will follow by summer 2025 to provide clearer navigation and help guests easily locate key areas, reducing confusion and enhancing the overall visitor experience.

In Spring 2026 parking management improvements will begin, including redesigning entry points, a new payment and parking system to streamline vehicle flow, and minimize congestion and reduce long car queues during peak visitation times. Improved ADA paths of travel, including accessible stalls and park pathways, are also a part of the project.

This project is part of the Elevate '28 Infrastructure Investment Plan (belevate28.com), a historic initiative dedicated to enhancing Long Beach parks, community facilities, mobility access and streets.



The project is funded from \$10,200,00 from California State Parks, \$700,000 from Long Beach Measure A and, and \$100,000 from the Long Beach General Fund.

For project updates, visit <https://longbeach.gov/pw/projects/el-dorado-park-paving-wayfinding-and-parking-improvements/#projectupdates>.

MARTIN LUTHER KING JR. POOL CLOSURE EXTRA SWIM OPTIONS ADDED

Martin Luther King Jr. Park Pool patrons can participate in extra swim options at Silverado Pool (1540 West 32nd St.) while the Martin Luther King Jr. Park Pool undergoes upgrades.

Check out these extra swim programs added to Silverado Park Pool to keep you active!

Tuesdays & Thursdays
Lap Swim: 6:30 – 8 a.m.

Deep Water Exercise: 6:30 - 7:20 a.m.
Shallow Water Exercise: 8 - 8:50 a.m.

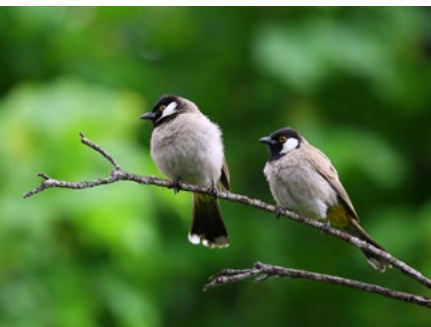
For Silverado Pool hours & programs, call 562- 570-1721 or visit www.longbeach.gov/.../pools/silverado-park-pool/

Martin Luther King Jr. Park Pool is expected to reopen in May.



EL DORADO NATURE CENTER CLASSES EXPERIENCE NATURE THIS SPRING

The El Dorado Nature Center staff invites residents to experience the health benefits of the outdoors.



This new class, Forest Bathing, or the Japanese practice of Shinrin-yoku is led by a certified Forest Therapy Guide and offers a guided sensory experience in El Dorado East Regional Park at Horseshoe Lake.

Participants will engage in slow, mindful walks to

connect with nature through their senses, reduce stress, improve well-being, and deepen connections with oneself, others, and the natural world. The class concludes with shared tea and snacks. Ages: 12 years and up. The class fee is \$20. Material fee of \$5 per class. Arrive 10 minutes early to park and settle in before the walk. Park entry fee waived with proof of class registration.

Classes are held on Saturday

- 65994 3/1 9-11 a.m.
- 65998 4/5 9-11 a.m.
- 65995 3/8 9-11 a.m.
- 65999 4/19 9-11 a.m.
- 65996 3/22 9-11 a.m.
- 66000 5/3 9-11 a.m.
- 65997 3/29 9-11 a.m.
- 66001 5/17 9-11 a.m.

EL DORADO NATURE CENTER ADULT WORKSHOPS

Naturalist-led walks will give participants a sense of the unique space and all that it has to offer. Each workshop will explore a different topic.

65920 History of El Dorado Nature Center March 8. Many who visit the Nature Center wonder how this

100-acre piece of land remains in a “natural” state while the city has built up around it?

Learn how the Nature Center’s transformations have shaped it into the vital habitat you see now.

65921 What’s Blooming? April 12. Nothing says spring quite like flowering plants in full bloom. Join expert staff for a trip through the Nature Center’s gardens and meadows to learn native plant identification and gain an appreciation for all they provide.

65922 Bees, Butterflies & Other Pollinators May 10. Now that that plants are blooming, who is visiting the blossoms? Together we will explore which creatures you’ll find on the different plants at the Nature Center and how their niche fulfills a role in the ecosystem.

Participants must pre-register using course numbers by the titles above at LBParks.org. Workshops for ages 16 years and up., \$10 per class, 10 a.m. – noon



GROUNDS MAINTENANCE COMPLETES PARK GROUNDS BEAUTIFICATION PROJECT



TWO BEAUTIFICATION PROJECTS WERE COMPLETED AT CHAVEZ PARK AND WHALEY PARK.



CHAVEZ PARK



WHALEY PARK



CHAVEZ PARK



WHALEY PARK

The Grounds Maintenance Division recently designed and completed two park grounds beautification projects, one at Cesar E. Chavez Park and one at Whaley Park. Both parks received new plants and had areas mulched.

RECREATION PARK DOG PARK IRRIGATION REPAIRS



CREWS WORK TO REPAIR A WATER LINE BREAK AT THE RECREATION DOG PARK

It took a team effort to repair a water line leak at the Recreation Dog Park.

After grounds Supervisor Clemente Cerrillos had located a puddle forming in the Recreation Park Dog Park parking lot, Plumbers Thomas Metzger and Michael Mazzone investigated, it was determined that an underground domestic water line had a break or a leak.

The Grounds team scheduled a shut down of the area to cut out the asphalt, excavate, locate the direction of water leak followed by repairing pipe and backfilling area. At the same time, an isolation valve was installed to avoid shutting the water to the entire Park including all restrooms, Bandshell, and Casting Pond.

Maintenance staff Antonio Guerrero, Daniel Mazzone, and Jorge Donato also assisted in the project.

CONGRATULATIONS DECEMBER 2024 EMPLOYEE OF THE MONTH ROBERTO QUINONEZ

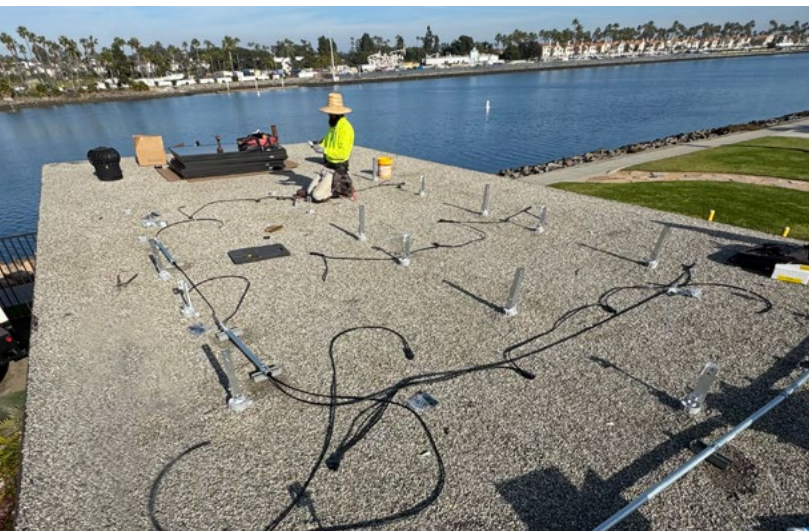
Congratulations to Gardener II Roberto Quinonez on being named the Employee of the Month for December 2024.

Roberto started with the Marinas, Beaches, and Tidelands area in 2019. He brought with him four years of hard work and knowledge from the Parks Marine Bureau Landscaping Grounds Division and two years ago as the Contract Monitor of the Division and has put it to good use beautifying our parks and monitoring the daily maintenance activities of our contractors.

Roberto has an eye for detail and isn't satisfied until the job is done right. Roberto was given the responsibility of heading up the Marine Bureau's Persons Experiencing Homelessness (PEH) outreach and cleanup team about a year and a half ago, in which he coordinates with Quality of Life Officers and outreach teams to address PEH issues. Roberto genuinely cares for the Marine Bureau and the City of Long Beach areas under his care. He also has shown growth in his leadership abilities, and he is a valuable part of our Beach Maintenance team.



MARINE STADIUM SOLAR ENERGY INSTALLATIONS



In continuing efforts to be as environmentally sustainable as possible, the Marine Maintenance team is installing a solar energy system on the Grounds Landscape building in Marine Stadium.

Previous efforts have included solar installations on the Marine Stadium Grand Stand and solar holiday floating trees in the bay.

General Maintenance Assistant Hilton Reynolds served as project manager and Supervisor Cedric Banks were responsible for these upgrades and green initiatives to reduce reliance on the Southern California Edison grid.

ROOFTOP ASSEMBLY OF SOLAR ENERGY SYSTEM ON THE GROUNDS LANDSCAPING BUILDING IN MARINE STADIUM.



LONG BEACH PARKS, RECREATION AND MARINE

SUMMER DAY CAMPS

Registration begins online April 12 at 9 a.m.

June 16 - August 22

*Closed June 19 & July 4



PAN AMERICAN PARK
5157 E. Centralia St.
562.570.3297

VETERANS PARK
101 E. 28th St.
562.570.1695

BIXBY PARK
130 Cherry Ave.
562.570.1601

SILVERADO PARK
1545 W 31st St.
562.570.1675

WARDLOW PARK
3457 Stanbridge Ave.
562.570.1705

EL DORADO PARK WEST
2800 N. Studebaker Rd.
562.570.3225

STEARNS CHAMPIONS PARK
4520 E. 23rd St.
562.440.2867

WHALEY PARK
5620 E Atherton St.
562.570.1710

Financial Assistance available on a first come, first serve basis. For more information, call (562) 570-3150 or visit us at LBParks.org

FEBRUARY 2025 CALENDAR

Fri. 14	10 a.m. – 2:30 p.m.	Low Cost Vaccination Clinic	Long Beach Animal Care Svcs
Sat. 15	10 a.m. – noon	Wetland Warrior Cleanup	Jack Dunster Marine Reserve
Sat. 15	11 a.m. – 1 p.m.	Pet Supplies Plus Pet Adoption Event	2806 N.Bellflower Blvd.
Sun. 16	8 a.m.	Free Docent Led Bird Walk, Register at 562.570.1745	El Dorado Nature Center
Mon. 17	10 a.m. – 2:30 p.m.	Low Cost Vaccination Clinic	Long Beach Animal Care Svcs
Tue. 18	9 a.m. – 2 p.m.	Free recreation and wellness programs for older adults	Visit LBParks.org for locations
Wed. 19	3-7 p.m.	Free Teen Centers recreation activities, homework help	Visit LBParks.org for locations
Th. 20	9 a.m. – 2 p.m.	Free recreation and wellness programs for older adults	Visit LBParks.org for locations
Fri. 21	3-7 p.m.	Free Teen Centers recreation activities, homework help	Visit LBParks.org for locations
Sat. 22	9-10 a.m.	4 th Saturday El Dorado Regional Park Cleanup	El Dorado Area III
Mon. 24	10 a.m. – 2:30 p.m.	Low Cost Vaccination Clinic	Long Beach Animal Care Svcs
Tue. 25	9 a.m. – 2 p.m.	Free recreation and wellness programs for older adults	Visit LBParks.org for locations
Wed. 26	3-7 p.m.	Free Teen Centers recreation activities, homework help	Visit LBParks.org for locations
Th. 27	9 a.m. – 2 p.m.	Free recreation and wellness programs for older adults	Visit LBParks.org for locations
Fri. 28	6:30-8:30	Black History Month Black Mosaic Music & Dance Showcase	Long Beach Senior Center

MARCH 2025 CALENDAR

Sat. 1	10 a.m. – noon	First Saturday Stewarts Nature Center Cleanup	El Dorado Nature Center
Sun. 2	Continuous to 3/2	On line Registration for Youth Indoor Soccer Leagues	teamsideline.com/longbeach
Mon. 3	10 a.m. – 2:30 p.m.	Low Cost Vaccination Clinic	Long Beach Animal Care Svcs
Tue. 4	9 a.m. – 2 p.m.	Free recreation and wellness programs for older adults	Visit LBParks.org for locations
Wed. 5	3-7 p.m.	Free Teen Centers recreation activities, homework help	Visit LBParks.org for locations.
Th. 6	9 a.m. – 2 p.m.	Free recreation and wellness programs for older adults	Visit LBParks.org for locations
Fri. 7	3-7 p.m.	Free Teen Centers recreation activities, homework help	Visit LBParks.org for locations
Mon. 10	10 a.m. – 2:30 p.m.	Low Cost Vaccination Clinic	Long Beach Animal Care Svcs
Tue. 11	9 a.m. – 2 p.m.	Free recreation and wellness programs for older adults	Visit LBParks.org for locations
Wed. 12	3-7 p.m.	Free Teen Centers recreation activities, homework help	Visit LBParks.org for locations
Th. 13	9 a.m. – 2 p.m.	Free recreation and wellness programs for older adults	Visit LBParks.org for locations
Fri. 14	10 a.m. – 2:30 p.m.	Low Cost Vaccination Clinic	Long Beach Animal Care Svcs
Sat. 15	10 a.m. – noon	Wetland Warrior Cleanup	Jack Dunster Marine Reserve
Sat. 15	11 a.m. – 1 p.m.	Pet Supplies Plus Pet Adoption Event	2806 N.Bellflower Blvd
Sun. 16	8 a.m.	Free Docent Led Bird Walk Register at 562.570.1745	El Dorado Nature Center
Mon. 17	10 a.m. – 2:30 p.m.	Low Cost Vaccination Clinic	Long Beach Animal Care Svcs
Tue. 18	9 a.m. – 2 p.m.	Free recreation and wellness programs for older adults	Visit LBParks.org for locations
Wed. 19	3-7 p.m.	Free Teen Centers recreation activities, homework help	Visit LBParks.org for locations
Th. 20	9 a.m. – 2 p.m.	Free recreation and wellness programs for older adults	Visit LBParks.org for locations
Fri. 21	3-7 p.m.	Free Teen Centers recreation activities, homework help	Visit LBParks.org for locations
Sat. 22	9-10 a.m.	4 th Saturday El Dorado Regional Park Cleanup	El Dorado Area III
Sun. 23		Youth Indoor Soccer League Practices start this week	teamsideline.com/longbeach
Mon. 24	10 a.m. – 2:30 p.m.	Low Cost Vaccination Clinic	Long Beach Animal Care Svcs
Tue. 25	9 a.m. – 2 p.m.	Free recreation and wellness programs for older adults	Visit LBParks.org for locations
Wed. 26	3-7 p.m.	Free Teen Centers recreation activities, homework help	Visit LBParks.org for locations
Th. 27	9 a.m. – 2 p.m.	Free recreation and wellness programs for older adults	Visit LBParks.org for locations
Fri. 28	3-7 p.m.	Free Teen Centers recreation activities, homework help	Visit LBParks.org for locations
Sun. 30	Open Hours	Spring Fun Days Registration Begins	Visit LBParks.org for locations
Mon. 31	10 a.m. – 2:30 p.m.	Low Cost Vaccination Clinic	Long Beach Animal Care Svcs

FREE AFTER SCHOOL PROGRAMS FOR AGES 5-12

Parents must register children on site. Visit LBParks.org for locations.

Mon- Fri, 3-6 p.m.

Bixby, Cesar E. Chavez, Coolidge, Drake, El Dorado West. Houghton M.L. King Jr., McBride, Orizaba, Ramona, Scherer, Seaside. Silverado, Somerset, Stearns Champions, Veterans and Wardlow Parks.

Mon-Fri, 2:30-5:30 p.m.

College Estates, MacArthur, Pan American (1:30-5:30 p.m. on Thursdays), Veterans and Whaley Parks.

LONG BEACH PARKS, RECREATION & MARINE

WWW.LBPARKS.ORG

2760 STUDEBAKER ROAD
LONG BEACH, CA 90815
PHONE: 562.570.3100
FAX: 562.570.3109



FOLLOW PARKS, RECREATION & MARINE ON
FACEBOOK, TWITTER AND INSTAGRAM



CITY OF
LONG BEACH

We Create Community | LONG BEACH PARKS, RECREATION & MARINE