

Heartwell Park

Area 1

9-16-2025


E Carson St
 Select Deselect

E Carson St

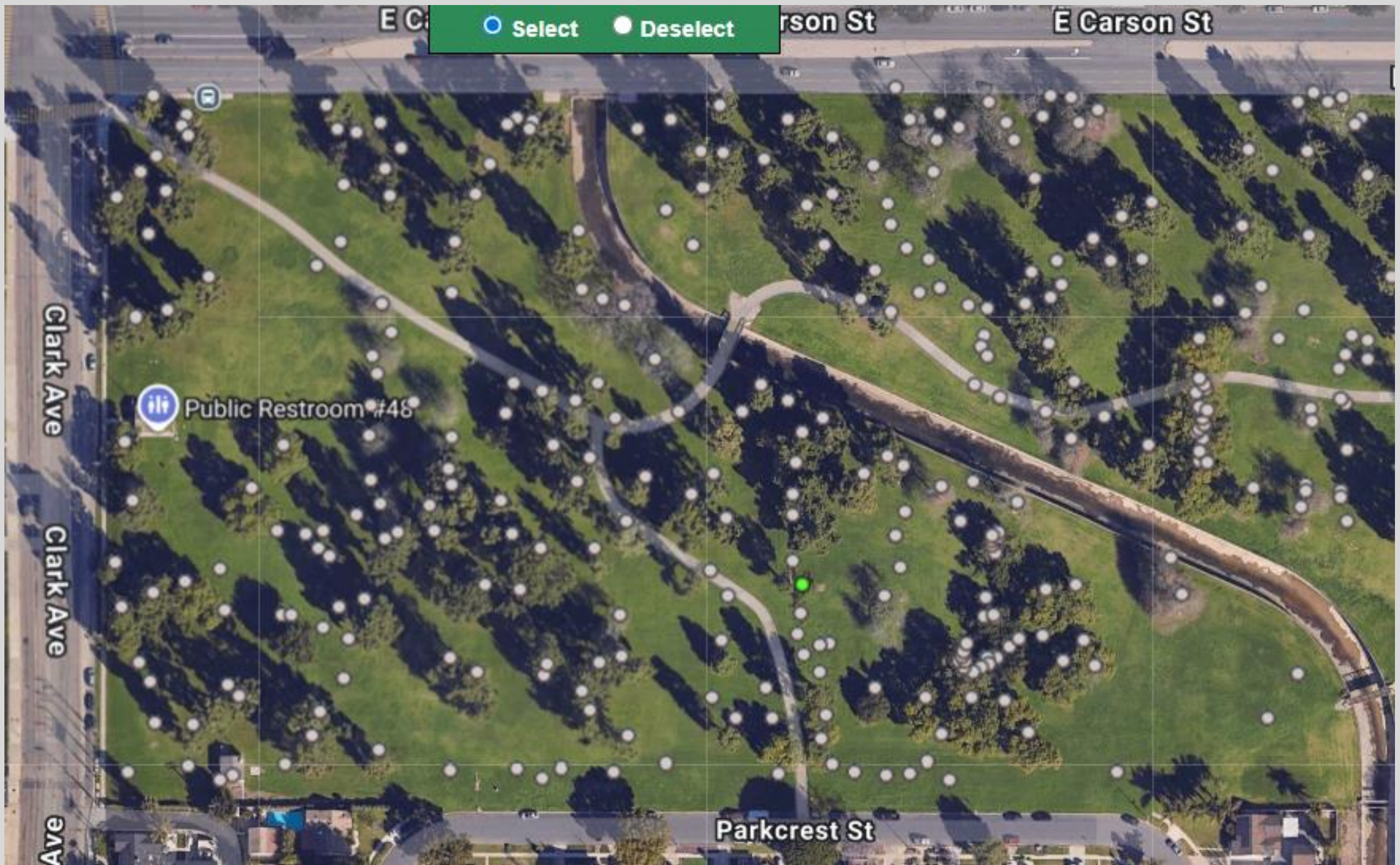
Clark Ave

Clark Ave

Clark Ave

 Public Restroom #48

Parkcrest St



Overall tree needs to be removed due to multiple issues that can not be remedied by pruning. Area was originally cautioned taped due to a broken branch stuck within the tree.



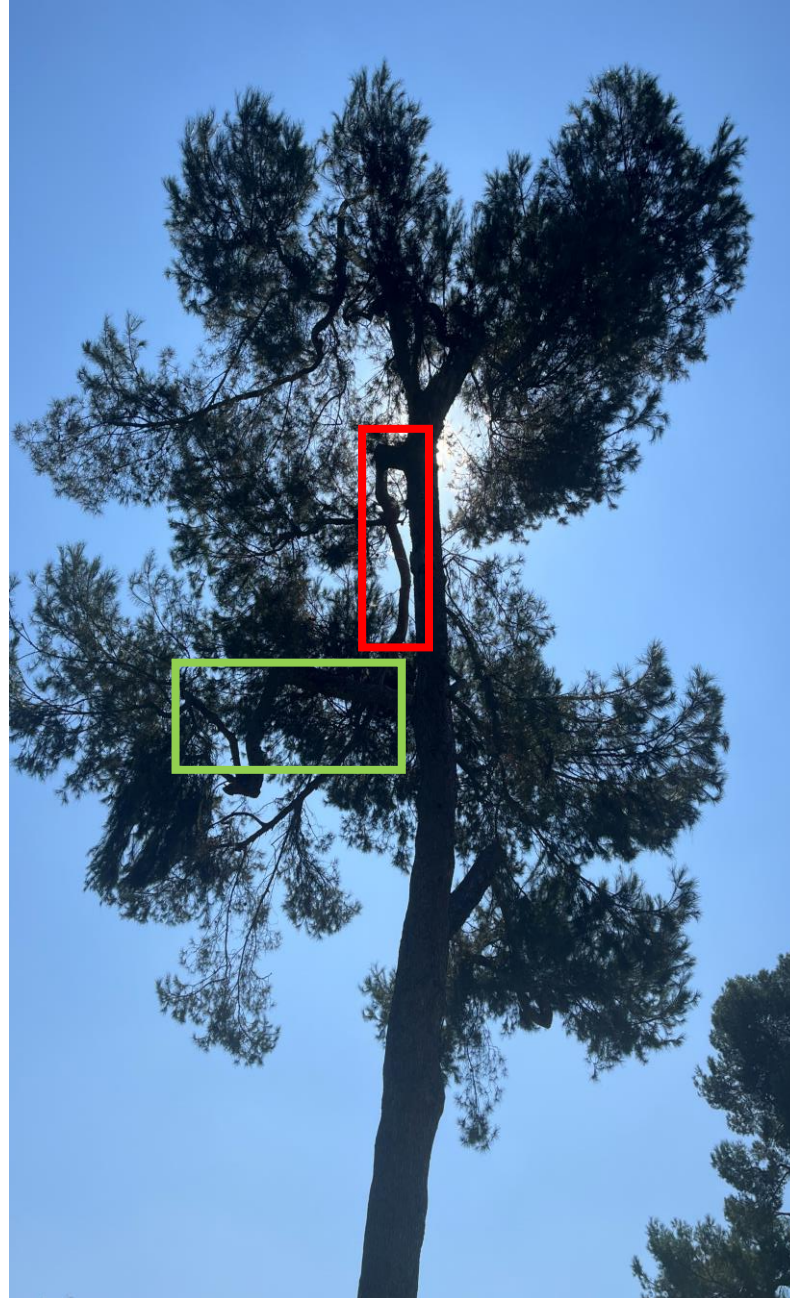
Old wounds within the tree. Needs to be removed

Cut needs to be made below the drawn line to the next joint.



Branch needs to be removed as it is growing in a downward direction crossing other limbs. Long term this is not structurally sound condition. The green box show the location of the next photo.

The limb in the photo has a cavity. This limb needs to be completely removed for safety reasons. The limb covering it is the same limb from the previous photo growing in a downward direction.



Limb is also growing in a downward direction along with damage to the park. Long term this would cause to potentially dangerous condition.

Location of the limb in the previous photo.



The tree has too many corrective cuts to be made would make it a candidate for removal.

