

BUSINESS PARTNER BRIEF

OCTOBER 2022



Director's Message

Greetings and welcome to the fall season. Wrapping up a busy summer season and heading into the even busier holidays, there's a lot to be jazzed about here at LGB, including our upcoming Festival of Flight! Enjoy this edition of our Business Partner Brief as we share exciting news, updates and photos with you.

—Cynthia Guidry

LGB Business Partner Spotlight: Banner Bob Dobry

This month we'd like to look up to the sky at pilot Bob Dobry, President of [AdsThatFly.com](https://www.adsthatfly.com). Better known here at Long Beach Airport as "Banner Tow Bob," the Long Beach native, with over 38 years of operation, is a recognized expert in creating and selling customized aerial advertising. He and his fleet have flown hundreds of commercial advertisements as well as personal messages in the sky for birthdays, proposals and special occasions.



Q: Can you tell us a bit of history about Ads That Fly and your current operations at Long Beach Airport?

A: I started business in May 1984 with one plane, and it quickly grew to a fleet of 11 banner tow planes. At its height, we had two field operations personnel, two full-time mechanics and 16 part-time banner pilots flying Bellanca Scout planes. We have a printing machine on-site that can create aerial banners as large as 4,000 square feet. As everyone has grown older and slowed down, so has the business, but we're still operating three banner planes with a handful of pilots.

Q: Why do you choose to do business at Long Beach Airport?

A: Long Beach Airport is centrally located in Southern California. We fly Los Angeles, Orange, Riverside, San Bernardino, San Diego and Ventura counties from Long Beach Airport.

Q: Is there anything about your personal life that you'd like to share?

A: I learned how to fly seaplanes four years ago in Florida. Since then, I have bought a seaplane and a house at Eagles Nest Aerodrome in Crescent City, Florida. I'm a full-time Florida resident with my two golden retrievers, Bro-D and Bella. My banner towing business continues to run itself. I fly to Long Beach once or twice a month to make sure things are running smoothly.

New Engineering Officer

We're delighted to announce Mr. Stephan Lum as LGB's new Engineering Officer! After starting at the Airport as an intern in 2008 and working his way up, Stephan spent the last several years as Senior Civil Engineer leading our multimillion-dollar capital improvement efforts. A graduate of the University of California, Irvine, and a professionally licensed engineer, Stephan has worked on various airside and landside construction projects. And he's been doing a fantastic job leading the Long Beach Airport Phase II Terminal Area Improvement Program!



LGB Supports Community Events

Did you know that LGB allocates up to \$2,500 to support community events in each Long Beach City Council district per fiscal year? For many years now, in accordance with Federal Aviation Administration (FAA) guidelines pertaining to the use of funds for substantial promotion, our LGB team and dedicated volunteers have enjoyed meeting our neighbors. It's an opportunity to support our community and showcase what we do here at LGB! In Fiscal Year 2022, we promoted the Airport at Dia de Los Muertos; the Rose Park Block Party; Fourth Fridays on Retro Row; the Belmont Shore Car Show; a community concert in El Dorado Park; Andy Street's Black History event; the Uptown Jazz Festival; and the Martin Luther King Park Vision Kick-Off!



Historic Terminal Renovation

Construction will soon be underway at the terminal building with plans in place to ensure the preservation and restoration of historic elements, including the safe storage of historic photos, model planes and other items. The Historical Society of Long Beach's archivist is lending his expertise to advise the Airport on the proper storage requirements to keep LGB history safe and secure once construction starts on the terminal's second floor in December. And we're grateful to the Long Beach Business Journal for capturing some of this important work, with a special focus on the mosaic tile art, in [this recent article](#).



New, Improved Security Cameras

Our Safety and Security Division is upgrading our surveillance system at LGB! We are in the process of enhancing the CCTV network architecture and devices. Cameras are crucial in maintaining the highest standard of security at the Airport and increased capabilities have already assisted in various incidents and investigations. Remember, if you see something suspicious, say something by calling Airport Security Dispatch at 562.570.2640 for assistance.

Festival of Flight

LGB's biggest event of the year is coming in for a landing this month. Don't forget to mark your calendar to attend the Festival of Flight on Saturday, Oct. 29. The opening ceremony for this free community event starts at 10 a.m. on the airfield. Static aircraft displays, live entertainment and other aviation-themed activities will run until 4 p.m. Follow us @LGBAirport on Facebook and Twitter for more details. See you there!



**FESTIVAL OF
FLIGHT
2022**

**October 29, 2022
10 a.m. - 4 p.m.**

Join us for the **Festival of Flight**, a **FREE** celebration
featuring food & beer trucks, static aircraft and live entertainment.



LGB Airfield
Taxiway E
3590 E. Wardlow Road
Long Beach, CA 90807

For more information:
562-570-2678 or lgbapt@longbeach.gov
We encourage you to rideshare or use public transportation.
No pets, coolers or large bags allowed.
All bags subject to search.

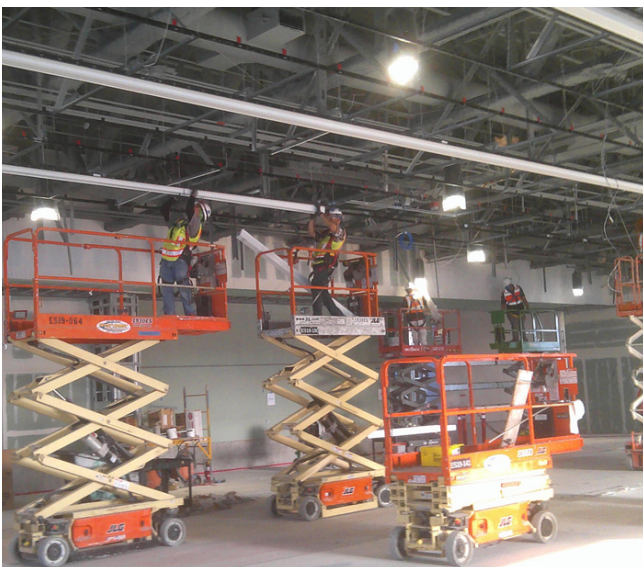
 long beach
airport
lgb.org/lbfof

Phase II Construction Update

Later this month, access to the first floor of the historic terminal will be limited to the restrooms, elevator and stairwells to the upper floors as we prepare to safeguard the mosaics as part of the seismic retrofit and renovation project. Access to the historic terminal will be closed to the public in December and administrative offices will be temporarily relocated. A significant amount of work to construct the new outdoor Baggage Claim facility is underway with exterior sheet metal coping and interior column cover installation, interior metal panel installation, flooring, ceiling framings and permanent lighting work. And the baggage handling system work at the exterior of the new facility, which includes installation of a new canopy structure, continues.



A peek behind the construction walls near the historic terminal and new Baggage Claim facility



Overhead lighting installation

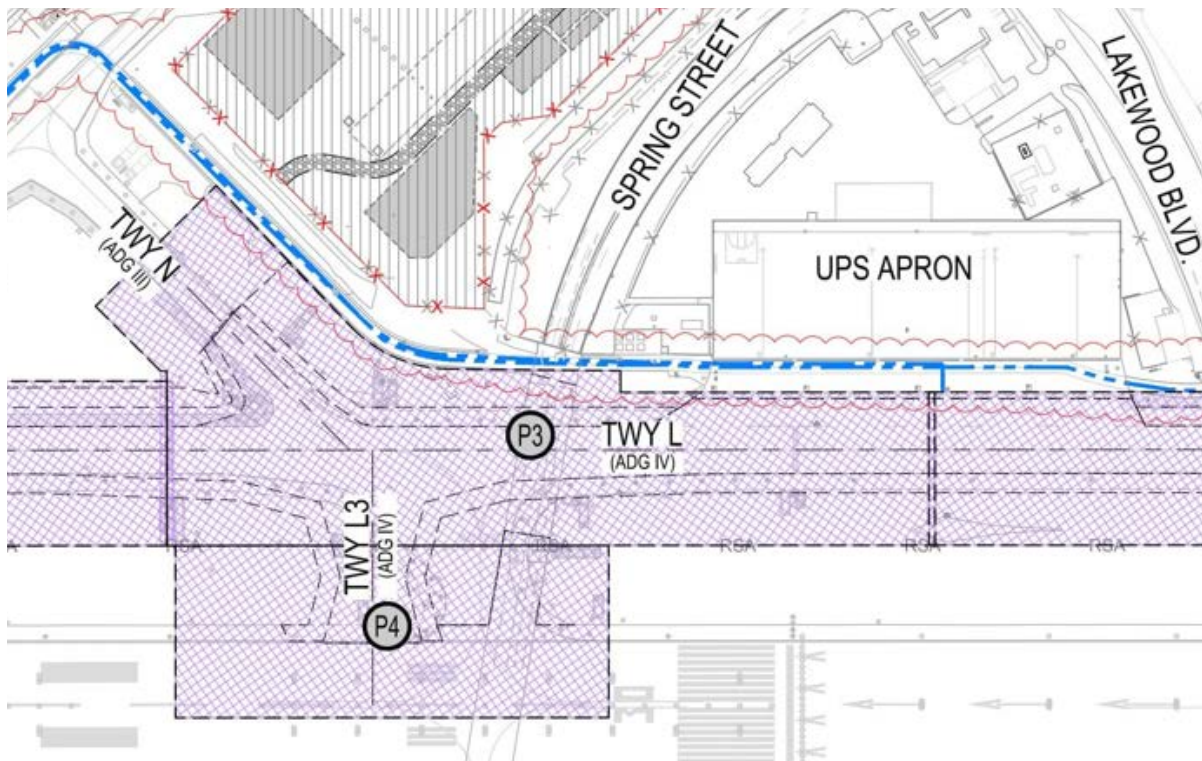


Installation of metal wall panels

Taxiway L Update

The reconstruction of Taxiway L, the primary taxiway for all departing commercial aircraft, will improve traffic safety on the airfield. The project began in January 2022 with an anticipated August 2022 completion date. Due to a nationwide shortage of concrete and asphalt, and other material supply chain issues, the construction completion date is now November 2022. Last month, a tremendous amount of work was conducted in the area adjacent to the UPS ramp (Phase 3 on the map below), including aggregate base removal, installing steel reinforcement and placing Lean Concrete Base (LCB) over the Spring Street tunnel deck, demolition of existing electrical work, runway guard light conduit installation and Portland Cement Concrete (PCC) slipform pavement placement.

Work in the Phase 4 area, including electrical demolition and excavating and installing duct banks and handholes, began in September. A handhole is a shallow metal electrical utility or pull box installed within a run of conduit or ducts that allows for easy access to pull in, splice, and terminate wires or cables. As a result of construction, LGB's primary runway, Runway 12-30, is closed most evenings from 10 p.m. until 6 a.m., and nighttime aircraft activity shifts to Runway 8L-26R, which runs parallel to Wardlow Road. As the hours of available sunlight are now getting shorter, pilots have the opportunity, though they are not required, to complete their required nighttime flying hours earlier in the evening.



Work is underway in the Phase 3 and 4 areas



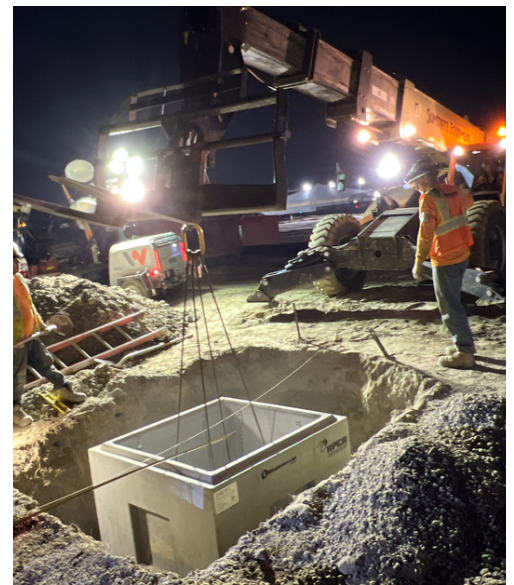
Aggregate base removal in the Phase 3 area



Lean Concrete Base (LCB) placement



Demolition work in the Phase 4 area



Handhole installation

Seen at the Scene

Our final concert of the LGB Live! summer series took place on Labor Day, wrapping up another year of toe-tapping musical entertainment from 30 unique performances.



On the 21st anniversary of the Sept. 11th attacks, we displayed our traditional floral American flag in remembrance of the lives lost that tragic day. Those attacks forever changed airports and airport security across the globe, and LGB is grateful to the Long Beach Police Department, Fire Department and TSA employees who keep us safe.



September is National Childhood Cancer Awareness Month and Long Beach Airport employees, once again, partnered with MemorialCare Miller Children's & Women Hospital to promote Flames of Hope 2022. The initiative collects well wishes and inspirational words for children with cancer and their families.



National Hispanic Heritage Month is celebrated in the United States from Sept. 15 through Oct. 15, to acknowledge the contributions of Hispanic Americans in American history. On LGB's social media, we recognized John Montijo, who was an experienced flight instructor for the U.S. Army Air Corps in World War I. Montijo moved to Long Beach and became one of the earliest licensed Hispanic pilots in the United States. He also provided flight instruction to Amelia Earhart!



The Special Olympics Southern California (SOSC) Plane Pull touched down at LGB last month. More than 60 teams tested their strength against a 124,000-pound UPS jet and raised over \$240,000 to support and empower SOSC athletes with intellectual disabilities to live healthier, happier and more fulfilling lives.



Southwest Airlines surprised passengers flying from LGB to Hawaii recently with a free ukulele and in-air ukulele lesson. We were honored that Southwest selected LGB to participate in the customer gratitude program. Find out more via KTLA: <https://ktla.com/news/local-news/flight-from-long-beach-to-hawaii-interrupted-for-historic-ukulele-lesson/>.



LGB's Storied History

Long Beach Airport enjoys a rich history, and this month in honor of the late Queen Elizabeth II, we're sharing this remembrance of her visit to LGB. Queen Elizabeth II, with Prince Philip in the background, shakes hands with Los Angeles Mayor Tom Bradley after she arrived at Long Beach Airport on the afternoon of Sunday, Feb. 27, 1983, from Palm Springs, starting a two-day visit to Los Angeles. Photo credit: Doug Pizac Associated Press



August Passenger Traffic

We continued to see steady commercial passenger activity this summer, with Long Beach Airport serving 293,444 passengers in August, an increase of 43.9% compared with the same time in 2021. We expect this trend to continue and finish with a solid third quarter.

	Aug 2022	Aug 2021	% Change	Aug 2020	% Change	Aug 2019	% Change
Passenger Traffic							
Enplanements	147,709	101,255	45.9%	21,424	589.5%	163,085	-9.4%
Deplanements	145,735	102,685	41.9%	22,261	554.7%	162,019	-10.1%
Total Passenger Traffic	293,444	203,940	43.9%	43,685	571.7%	325,104	-9.7%
Total Air Cargo (Tons)	1,087	1,109	-2.0%	1,019	6.7%	1,671	-34.9%

	YTD 2022	YTD 2021	%	YTD 2020	%	YTD 2019	%
Passenger Traffic							
Enplanements	1,059,762	596,515	77.7%	412,712	156.8%	1,181,455	-10.3%
Deplanements	1,047,856	594,729	76.2%	415,191	152.4%	1,177,899	-11.0%
Total Passenger Traffic	2,107,618	1,191,244	76.9%	827,903	154.6%	2,359,354	-10.7%
Total Air Cargo (Tons)	9,023	8,666	4.1%	10,394	-13.2%	13,871	-35.0%



Cynthia Guidry
 Airport Director