

# BUSINESS PARTNER BRIEF

## NOVEMBER 2022



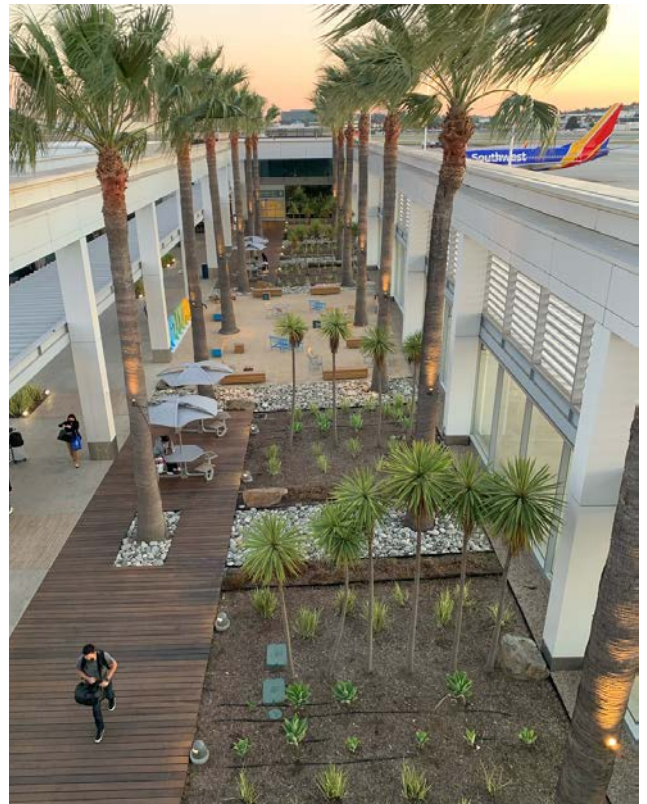
### Director's Message

Greetings! The busy holiday travel season kicks off soon with Thanksgiving later this month, and there's so much to be grateful for here at Long Beach Airport. Enjoy this edition of our Business Partner Brief as we share news, updates and photos.

—Cynthia Guidry

### LGB Among the Top Ten

We're over the moon about being named among the 2022 Top Ten best airports in the United States, based on votes by readers of *Condé Nast Traveler* magazine. Ranking eighth nationwide, we're honored that travelers continue to take notice of LGB. Recognitions such as this really underscore our already exceptional reputation for providing guests with an outstanding experience. Nearly a quarter-million magazine readers voted, with Long Beach Airport being called out for being "easy to fall for" and "charming." Readers noted how LGB makes the most of Southern California's perfect weather with "surprising use of outdoor spaces," including palm trees and a fire pit in the open-air concourse, where there are local dining and retail options. The nearly 100-year-old airport is also appreciated by travelers for its history, including its well-preserved historic terminal.



## LGB Business Partner Spotlight: Aaron Alu, Long Beach Police Department

This month we'd like to shine a spotlight on Lieutenant Aaron Alu, Airport Police Section Lieutenant. He's been with the Long Beach Police Department since 1996, having worked in a variety of roles – including being on downtown bicycle patrol, supervising LBPD's Vice Investigations Night Team, and serving on the S.W.A.T. team – before joining us here at LGB.



Q: Can you tell us about your operations here at LGB?

A: The Airport Police Section is a 24-hour operation. Police officers and Security Services Officers assigned to Long Beach Airport work around the clock to deter, detect and respond to crimes that occur in and around LGB. Officers respond to alarms, calls for service and make sure safety protocols are adhered to at Long Beach Airport. We also assist the traveling public with general information and help with problems that arise to make sure our travelers have the best flying experience possible.

Q: What do you like best about working at LGB?

A: I enjoy how the Airport is constantly making improvements to our facilities, but at the same time, keeping the small airport feel. I always receive compliments from our passengers on how easy it is to fly in and out of Long Beach. These positive experiences make it easier for all of us working here at LGB.

Q: Anything else you'd like to share with your fellow airport business partners?

A: We always welcome tips and safety concerns from our business partners. You know when something or someone is out of place and could be a security/safety risk. The Airport's police communication dispatch number is 562-570-2640. This number is also located on the back of your Airport Security ID in red ink.

## Festival of Flight Delights Thousands

An estimated 13,000 people took part in Long Beach Airport's Festival of Flight on October 29. The free, public event is a community favorite, and features live music, food trucks, a beer garden and approximately 30 static aircraft on display, including a Boeing 757, Coast Guard C-27J, Icon A-5 Amphibian, North American T-6 and Stearman Biplane. There were also helicopter rides for purchase. This is always my family's favorite LGB event of the year, and I'd like to give a special thanks to our many partners who collaborated with us to share their love of aviation and make this event so special!



## LBAA's Voluntary Pilot Program

With construction on the airfield causing temporary, nighttime closures of LGB's primary runway, the Long Beach Airport Association (LBAA) is encouraging flight schools to voluntarily reduce their nighttime training maneuvers and fly quieter. The voluntary program asks flight schools to cease pattern work, which consists of low altitude practice circuits close to the airport, after 9:59 p.m. on evenings when there is nighttime construction work that closes Runway 12-30. We are grateful to the flight schools and general aviation community for coming together while these necessary improvements are made on the airfield, and we're already seeing a substantial decrease in operations after 10 p.m.



## LGB Wins Industry Award for Advertising

Long Beach Airport was honored to be recognized by Airports Council International-North America (ACI-NA) for Excellence in Airport Marketing, Communications and Customer Experience. LGB won the Digital Advertising category among stiff competition from airports across the U.S. and Canada. The award recognized LGB's digital advertising campaign in 2021, which focused on (1) promoting LGB as the best launching point in Southern California for Hawaii travel and (2) introducing LGB to several new markets with new, nonstop service, such as Austin, Chicago and Dallas. LGB was also recognized as a finalist in the Print Communications and Promotional Items categories.



Aloha starts here.

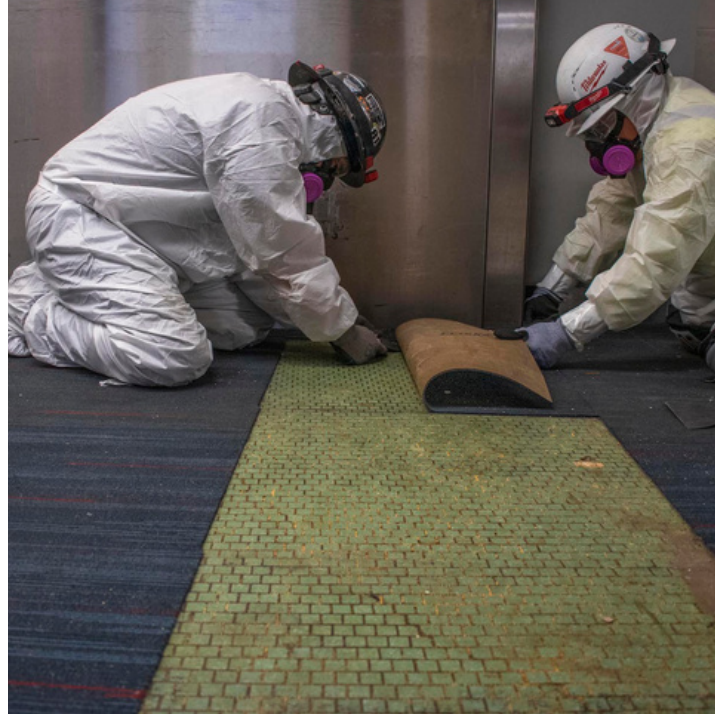
Nonstop flights to paradise

BOOK NOW



## More Mosaic Tiles Revealed

We recently got our first peek of some of the mosaic tiles under the flooring of the former Airport Ticketing Offices (ATOs) in the Historic Terminal when we began the meticulous process of uncovering and protecting the tiles — much like what was done during the previous, award-winning restoration of the tiles completed in 2015. We know there are even more beautiful tiles waiting to be uncovered with the terminal renovation project, including (we hope) two more vignettes, depicting a 1920s-era propeller plane and a sailboat, which have been covered up since the 1970s. With more than 1.6 million tiles of 32 colors, Grace Clements' artistry continues to shine as one of LGB's treasured assets!



## Solar Power Measures Up

We're making great progress on the large solar project on top of parking structures A and B, with 80% of the panels already installed. Once operational, we anticipate the project, based on 2018 data, will generate renewable energy that will conservatively supply an estimated 70% of the electricity used by the Airport facilities. That means, of the roughly 4.8 million kilowatt-hours used by the Airport annually, solar power will cover more than 3.7 million kilowatt-hours, supplying energy to the Historic Terminal, North Concourse and South Concourse, TSA Screening, Ticketing Lobby, Consolidated Baggage Inspection System (CBIS) facility, air carrier ramp and airfield. The project, which will cover nearly 133,000 square feet of the rooftops, is expected to be completed by the end of the year and will be a major sustainability achievement for LGB.



## 1,699 Volunteer Hours Logged

We are so fortunate to have an incredible group of 32 volunteers who help as ambassadors for Long Beach Airport, greeting guests, helping behind the scenes and representing LGB while handing out promotional items at various community events. For the last fiscal year, ending October 1, our volunteers racked up 1,699 hours of service. Five of our volunteers - Rhonda Brown, Mary Eichenhofer, Lynne Jungers, Fred Welch and Barbara Wilke - deserve some extra kudos for putting in more than 150 hours each! These volunteers were especially helpful in helping guests during the opening days of our new Ticketing Lobby.



## Recycling Counts

In Fiscal Year 2022, as part of LGB's recycling program, we diverted more than 12,240 pounds of trash from landfills. Plus, in partnership with the City of Long Beach Environmental Services Bureau, LGB will soon be rolling out a new non-CRV recycling component for mixed recycling products such as office paper, mixed paper goods (i.e., cartons and newspapers) and other non-CRV items.

## Phase II Update

Construction of the new Baggage Claim area and the plaza continues to progress behind the construction walls. Check out the panoramic view below! Grading and concrete placement remain ongoing in the plaza. Installation of two conveyors for the inbound new Baggage Claim systems is underway. And in the Historic Terminal, work related to floor protection and the mosaic tiles continues, as well as the removal of cabinetry in the vacated gift shop. Public access to the restrooms and 2nd floor administrative offices will remain in place through November.



Panoramic view of the Plaza and New Baggage Claim areas



Baggage conveyor installation is underway



Preparation for the Historic Terminal renovation continues

## Taxiway L Update

Improvements to Taxiway L continue to move forward in the areas adjacent to the UPS ramp and Taxiway N, as well as near Taxiway L3. Last month, work included demolition of existing electrical work, concrete removal, placing Cement Treated Base (CTB), excavation and removal of existing storm drain lines, Portland Cement Concrete (PCC) slipform pavement placement, and installation of new storm drain line, electrical ducts and runway guard light conduits.



Excavation &amp; removal of existing storm drain line



Installation of the new storm drain line



Portland Concrete Cement (PCC) placement



Electrical installation for edge lights

## November is Aviation History Month

Follow Long Beach Airport on social media for some special posts this month celebrating Aviation History Month. November is a significant month in LGB's history with the Spruce Goose making its first and only flight on November 2, 1947, the Airport itself officially breaking ground on November 26, 1923, and the last C-17 being delivered out of Long Beach on November 29, 2015.



## LGB Marks Native American Heritage Month

Did you know: Qualified to fly solo in 1930, Mary Riddle (pictured below) was the first woman enrolled in a Native American tribe to earn her pilot's license. In celebration of Native American Heritage Month in November, check out more groundbreaking stories of Native American aerospace pioneers on the National Air and Space Museum [website](#).



## Seen at the Scene

Artists and their supporters attended a colorful celebration showcasing the Able ARTS Work public art display that's been exhibited for the past several months on large construction barriers in the outdoor garden area of the Airport concourse. About 60 people attended the event, which included light refreshments graciously donated by Paradies. The artwork, some of which was created by individuals with developmental disabilities, has brightened the way for travelers with 14 works of art on display in a variety of mediums.



Long Beach Airport stepped up as the official airport of the Long Beach Marathon, where we reminded runners that LGB can connect them with the fastest, most convenient options to reach their next race.



## Minneapolis-Saint Paul Airport's Gift to LGB

Long Beach Airport recently received a beautiful work of art from the Minneapolis-Saint Paul International Airport (MSP). The generous gift from MSP, which hosted the 2022 Airports Council International-North America annual conference, is meant to celebrate LGB hosting the next conference in 2023. The repurposed tin and stainless steel nail artwork by Michael Sweere is titled "The Land of Lakes."



## September Passenger Activity

We are continuing to see steady growth in commercial passenger activity this fall as we head into what's expected to be a busy holiday travel season. Long Beach Airport served 282,191 passengers in September, an increase of 56% compared with the same time in 2021. So far in 2022, LGB has served more than 2.4 million passengers, up 76% compared to the same time last year.

	Sep 2022	Sep 2021	% Change	Sep 2020	% Change	Sep 2019	% Change	YTD 2022	YTD 2021	% Change	YTD 2020	% Change	YTD 2019	% Change
<b>Passenger Traffic</b>														
Enplanements	139,776	90,921	53.7%	27,814	402.5%	145,542	-4.0%	1,210,500	687,436	76.1%	440,526	174.8%	1,326,997	-8.8%
Deplanements	142,256	90,439	57.3%	27,193	423.1%	143,960	-1.2%	1,202,160	685,168	75.5%	442,384	171.7%	1,321,859	-9.1%
<b>Total Passenger Traffic</b>	<b>282,032</b>	<b>181,360</b>	<b>55.5%</b>	<b>55,007</b>	<b>412.7%</b>	<b>289,502</b>	<b>-2.6%</b>	<b>2,412,660</b>	<b>1,372,604</b>	<b>75.8%</b>	<b>882,910</b>	<b>173.3%</b>	<b>2,648,856</b>	<b>-8.9%</b>
<b>Total Air Cargo (Tons)</b>	<b>1,121</b>	<b>1,322</b>	<b>-15.2%</b>	<b>1,104</b>	<b>1.5%</b>	<b>1,563</b>	<b>-28.3%</b>	<b>10,144</b>	<b>9,988</b>	<b>1.6%</b>	<b>11,498</b>	<b>-11.8%</b>	<b>15,434</b>	<b>-34.3%</b>

## Airport Administrative Offices Holiday Closures

Long Beach Airport administrative offices will be closed on Tuesday, November 8, in observance of Election Day. The offices also will be closed for the Thanksgiving holiday on Thursday and Friday, November 24 and 25. Airport operations, security and building services will continue uninterrupted.



Cynthia Guidry  
Airport Director