



Director's Message

Greetings! Summer vacationers are enjoying their first-class experience at Long Beach Airport, where passenger traffic has nearly recovered to pre-pandemic levels. With the weather heating up, there's plenty of hot news to share this month, including exciting announcements from our air carriers. —Cynthia Guidry

LGB Construction Projects Receive Industry Honors

Long Beach Airport took home two awards from the Construction Management Association of America Southern California Chapter (CMAASC) 29th Annual Awards Gala. The Project Achievement Awards highlight the best of the best, those projects that serve as an example to the industry. And our Engineering team was recognized for the improvements to Taxiway C and the reconstruction of Taxiway B (redesignated as Taxiway E). CMAASC's acknowledgment adds to LGB's reputation as a prime example of professionalism, innovation and excellence in construction project management.



LGB Business Partner Spotlight: Bronwen Edwards, Southwest Airlines University

We're pleased to introduce Bronwen Edwards, the Southwest Airlines University (SWAU) Learning Instructor at Long Beach Airport. This month, Bronwen is celebrating 25 years with Southwest Airlines! SWAU is an integral part of SWA's business operations and it's great to have Bronwen based at LGB to oversee their training program.



Q: Can you share a little about your professional background?

A: I started at Los Angeles International Airport (LAX) as a Customer Service Agent and, two and a half years later, I was promoted to Customer Service Supervisor, where I worked all areas - gates, ticket counter and baggage claim. Then I became a Training Supervisor and conducted training in addition to my regular duties. In 2014, SWAU was created and I joined their team. I had been training primarily at LAX but, from time to time, helped with training at Long Beach Airport. As the operation grew, it was decided that LGB needed a full-time Learning Instructor - which I gladly accepted!

Q: Is there anything about your personal life that you would like to share?

A: I was born and raised in Westchester near LAX and moved to the Lakewood area three years ago. I love the Dodgers and Lakers. I have an 8-year-old adopted son. We love to travel, love the outdoors - especially the beach - and I like to surf even though I'm not very good. My son has become a true airline kid! He's been to Hawaii three times, Texas, Mexico, England and Scotland. And he's always asking where we are going next and says he wants to fly for free for his entire life!

Q: What is Southwest Airlines University and what do its operations at LGB look like?

A: SWAU takes care of all training for our team. We cover federal training and company policies for new hires. We also provide recurrent training for the entire station and all departments working on the ground. There's instructor-led training, as well as other topics that are accomplished via computer. We also train any new policies that arise, such as the Safe Travels program for our Hawaii flights. The operation at LGB is very unique. We already know that operations at any airport are unpredictable. When it comes to training, we must be ready for operational issues such as delays and cancellations, but also employee sick calls. That's when I need to be creative to ensure we complete our training, and possibly reschedule for another day. I'm lucky to have a great team at LGB that works with SWAU while keeping the operations running smoothly.

Q: How long have you been based at LGB and what do you enjoy most about working at our airport?

A: I've been helping out here for about three years, but I've officially been based at LGB since May 1, 2022. I enjoy the small airport feel, feeling like you're at an island airport. Coming from such a huge airport like LAX makes you appreciate the coziness here. I even met airport directors here in my first week (and still haven't met an airport director at LAX!)

Q: Anything else you'd like to add?

A: I think LGB is such a special place to work. I love that feeling that we all know each other, maybe not by name, but by face. I'm very happy to be here!

Welcome to Long Beach, Breeze Airways!

Breeze Airways will start service from Long Beach Airport this fall. Breeze is a new Utah-based airline offering nonstop service between underserved routes across the United States. The new carrier was awarded one permanent flight slot and will be joining American Airlines, Delta Air Lines, Hawaiian Airlines and Southwest Airlines in servicing Long Beach travelers. Stay tuned for news on their destination!



Southwest Adds Nonstop Service to Nashville, Direct to DCA

Here we come, Nashville! Southwest Airlines recently announced that it will begin offering daily, nonstop flights from Long Beach Airport to Nashville International Airport (BNA). An exciting detail about this new route is that on weekdays, the aircraft will depart Long Beach around 9 a.m., make an approximately 45-minute stop at BNA, and continue to Ronald Reagan Washington National Airport (DCA). According to the new schedule, weekday travelers can depart LGB and arrive at Washington D.C. in about six and a half hours. We're looking forward to this new service starting on November 6, 2022!



New Solar Canopies to Provide Renewable Energy

The installation of solar canopies on the rooftops of LGB's two parking structures is going strong! Providing shade and collecting sunlight, the project is part of a larger citywide solar initiative being conducted by the Long Beach Department of Public Works. It is expected to generate enough renewable energy to supply approximately 70% of the terminal facilities electricity usage. This represents another step forward in LGB's commitment to the environment and our pledge to reduce emissions. The goal, eventually, is for LGB to become a carbon-neutral facility. The project is expected to be completed by the end of the year.



Airport Advisory Commission Elects Leadership

At their June meeting every year, the Airport Advisory Commission elects a new Chair and Vice Chair to serve a one-year term. Commissioner Katie Larson, who recently served as vice chair, has been elected Chair and Commissioner Robert L. Allarte has been elected Vice Chair. At the same meeting last month, I had the pleasure of presenting Commissioner Jeffrey Anderson with a beautiful illustration of our historic terminal in appreciation of his eight years of service. Airport Advisory Commission meetings are open to the public and held on the third Thursday of the month, except April, August and December. For information about commission meetings including agendas, minutes and reports, please see the Long Beach City Clerk's webpage at <http://longbeach.legistar.com/Calendar>.



Phase II Construction Update

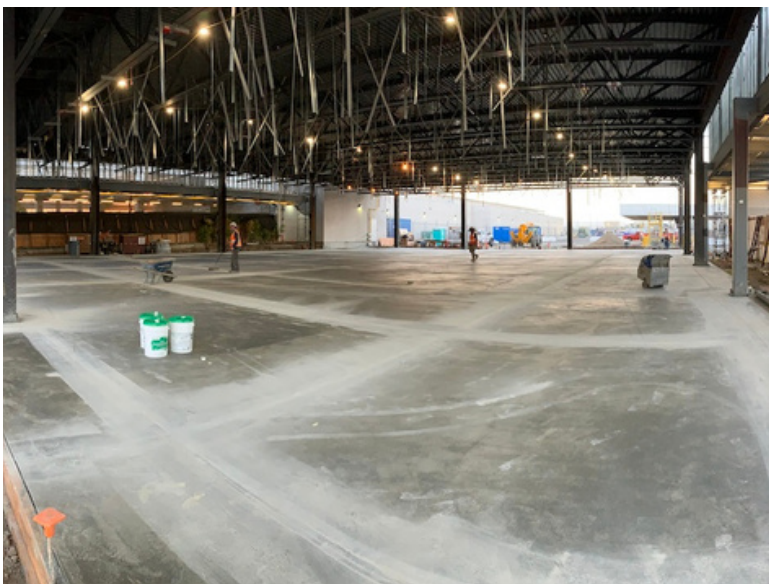
The new Ticketing and Checked Baggage Inspection System (CBIS) facilities are entering their third month of usage. Demolition of the old CBIS facility has been completed and soil removal remains ongoing. Underground electrical duct bank installation in the Plaza area is moving forward. The electrical high voltage conduits will serve the new Baggage Claim facility and other buildings. The concrete slab-on-grade and retaining wall for the west side of the Baggage Claim facility have been placed, and roofing, fireproofing and fire sprinkler installation are in progress. The brand-new Baggage Claim facility is scheduled to open in late 2022.



Soil removal in the Plaza area remains ongoing



Underground electrical duct bank installation



The slab-on-grade for the Baggage Claim facility looks great!



View of the Baggage Claim facility's north exterior wall

Taxiway L Construction Update

A significant amount of work was completed in the Phase II area of our Taxiway L project, including the cement treated subgrade placement, subbase and asphalt paving, trenching and installing edge lights, as well as striping and the reconfiguration of the Runway 12-30 centerline lights. With the completion of the Phase II area, Runway 12-30 is now back to full length. In the Phase I area, subgrade and subbase work continued last month and asphalt paving was initiated. Electrical work in the Phase V area, which is adjacent to the former Gulfstream space, remains ongoing. The reconstruction of Taxiway L with concrete pavement will provide an anticipated service life of 40 years.



Paving in the Phase II area



Striping is complete at Runway 12-30 and Taxiway L1 and L2



Grading and compaction in the Phase I area



Electrical work in the Phase V area remains ongoing

LGB Presence at Community Events Continues

It was great to be a part of two community events in June. The Andy Street Community Association's 10th Anniversary Black History Celebration: Yesterday, Today & Tomorrow celebrated African American history, heritage, arts, culture, contributions and legacy with a diverse audience. And LGB staff met community members at the Long Beach Juneteenth Celebration where thousands enjoyed a variety of cultural performances. Our next community engagement event will take place on July 10 - join us at the Long Beach Pride Parade, which steps off at 10:30 a.m. along Ocean Blvd., from Lindero to Alamitos Avenues!



Seen at the Scene

LGB is a great place to spot various aircraft, like an Airbus A400M Atlas. And we had a brief and unexpected visit from Marine Helicopter Squadron One (HMX-1) - commonly known as Marine One when the President of the United States is onboard - coinciding with the President's recent visit to Los Angeles.



Our LGB Live! summer concert series continues through Labor Day weekend. And on June 21, we invited a couple of artists to celebrate Make Music Day, a free celebration of music around the world. Launched in 1982 in France as the Fête de la Musique, Make Music Day is now held on the same day in more than 1,000 cities in 120 countries.



We were proud to illuminate our historic terminal in honor of Juneteenth and Pride Month!



The American Red Cross held a blood drive at LGB where 10 blood donors (including two first timers!) donated nine units of blood - a quantity that can potentially save 27 lives.



May Commercial Flight Activity

Long Beach Airport served 282,698 passengers in May 2022. Airline passenger traffic at LGB increased 46.6% in May 2022 compared with the same time in 2021. Total air cargo carried by aircraft increased 1.3% in May 2022 compared to the same time the previous year; 1,084 tons passed through the Airport in May 2022. We expect this upward trend to continue and look forward to a strong summer travel season!

	May 2022	May 2021	% Change	May 2020	% Change	May 2019	% Change
Passenger Traffic							
Enplanements	141,370	95,477	48.1%	5,688	2385.4%	151,959	-7.0%
Deplanements	141,328	97,328	45.2%	5,878	2304.4%	153,318	-7.8%
Total Passenger Traffic	282,698	192,805	46.6%	11,566	2344.2%	305,277	-7.4%
Total Air Cargo (Tons)	1,084	1,070	1.3%	1,266	-14.4%	1,865	-41.9%

	YTD 2022	YTD 2021	% Change	YTD 2020	% Change	YTD 2019	%
Passenger Traffic							
Enplanements	608,290	280,287	117.0%	358,159	69.8%	704,369	-13.6%
Deplanements	605,149	280,912	115.4%	360,327	67.9%	703,648	-14.0%
Total Passenger Traffic	1,213,439	561,199	116.2%	718,486	68.9%	1,408,017	-13.8%
Total Air Cargo (Tons)	5,931	5,123	15.8%	6,872	-13.7%	8,688	-31.7%

Airport Administrative Offices Holiday Closure

Long Beach Airport administrative offices will be closed on Monday, July 4, in observance of Independence Day. Airport operations, security and building services will continue uninterrupted.




Cynthia Guidry
Airport Director