

# BUSINESS PARTNER BRIEF

## MARCH 2023



### Director's Message

Greetings! As springtime arrives at Long Beach Airport, we have some new nonstop flight announcements and several major projects blossoming along with the flowers this season.

—Cynthia Guidry

### Spotlight: Candido Hernandez with Hawaiian Airlines

This month, we'd like to shine a spotlight on Candido Hernandez, General Manager for Hawaiian Airlines at Long Beach Airport. Candido helps manage all aspects of Hawaiian's daily operations at LGB, from the ticket counter to the ramp.



**Q: Can you tell us about Hawaiian Airlines' operations at LGB?**

A: Hawaiian Airlines began offering service at Long Beach Airport in 2018. We operate two daily departure flights using the Airbus A321neo with a capacity of 189 seats, offering nonstop service to Daniel K. Inouye International Airport (HNL) in Honolulu and Kahului Airport (OGG) in Maui County. Airport Terminal Services provide ground handling for both above and below the wing with approximately 14 employees working both departure flights daily. We also have both our Hawaiian supply and maintenance teams working at LGB.

**Q: Congratulations on your recent promotion to General Manager! Can you please share a bit about your professional background?**

A: I have been working in the aviation industry for 15 years. In that time, I spent 11 years working at LAX for an international carrier as an account trainer and duty manager and four years as an operations manager for Hawaiian Airlines at LGB.

**Q: What do you enjoy most about working at LGB?**

A: I enjoy the great airport community. Everyone is always very welcoming and in good spirits!

**Q: Outside of work, what do you like to do?**

A: During my personal time, I enjoy bowling in a bowling league with friends.

**New Flight Allocations and Destinations**

LGB recently awarded five supplemental flight slots to Southwest Airlines, which is launching new daily, nonstop flights to Albuquerque (ABQ) starting September 5 as well as Colorado Springs (COS) and El Paso (ELP) starting July 11. Seasonal service to Maui (OGG) returns March 9, and flights to Missouri's Kansas City International Airport (MCI) take off on March 9. Plus, nonstop flights to Dallas (DAL) are increasing to twice daily Sunday through Friday beginning June 4 and nonstop flights to Chicago (MDW) are increasing to twice daily on weekdays beginning July 11. With these latest additions, air carriers at Long Beach Airport now offer nonstop flights to 22 destinations around the nation, which is more nonstop service than at any time in LGB's nearly 100-year history! The previous record was 19 nonstop destinations in 2011. See our new route map here or visit [lgb.org/destinations](http://lgb.org/destinations).



22 Nonstop Destinations from Long Beach Airport (LGB)

**Delta Air Lines**

Salt Lake City, UT

**Hawaiian Airlines**

Honolulu, HI  
Maui, HI

**Southwest Airlines**

Albuquerque, NM  
Austin, TX  
Chicago, IL (Midway)  
Colorado Springs, CO  
Dallas, TX (Love)  
Denver, CO  
El Paso, TX  
Honolulu, HI  
Houston, TX (Hobby)  
Kansas City, MO  
Las Vegas, NV  
Maui, HI  
Nashville, TN  
New Orleans, LA  
Oakland, CA  
Orlando, FL  
Phoenix, AZ  
Reno, NV  
Sacramento, CA  
St. Louis, MO  
Salt Lake City, UT  
San Jose, CA



\* Service begins July 2023  
\*\* Service begins 9/5/23  
All destinations subject to change | Rev. 3/1/23

## Historic Terminal Closure

Long Beach Airport's Historic Terminal is temporarily closed for a year-long renovation that will include a seismic retrofit and restoration of many of its classic 1941 design elements. Preliminary renovation efforts began while the historic landmark was partially open to the public, but the full closure is necessary to complete the renovation. In addition to the seismic retrofit, significant project elements include improvements to the restrooms and building infrastructure, restoration of covered mosaic tiles and other Art Deco design elements, including the iconic west entrance, which has been closed for decades. Expected to re-open in early 2024, the \$17.8 million renovation is the fourth project in the \$110 million Phase II - Terminal Area Improvement Program. As part of that effort, two major components were completed in the spring of 2022, including the new Ticketing Lobby and Checked Baggage Inspection System (CBIS) facility. A new Baggage Claim is currently under construction and scheduled to open in the coming months. Once the renovation is complete, the first floor of the terminal building will transition into space dedicated to rental car customer service functions, currently located in temporary mobile units, and Airport Administration will return to operate on the second floor. In the meantime, the Airport remains open and operational!



## Stormwater Sampling Passes Test Again

Following the winter rain, LGB's stormwater runoff was again tested at the lab and is in 100% compliance at all sampling locations! The tests were conducted following a qualifying storm event (QSE) on December 27 at the Airport, providing enough rain to sample runoff and ship it to a lab in Fresno for testing. The lab tests for oil and grease, total suspended solids, chemical oxygen demand and ammonia. The results indicated that the pollutants were below detection limits at many sampling locations, and we continue to be in full compliance at all the locations. It takes the entire LGB business community to achieve these results, so please accept my thanks for following best management practices that reduce the potential for pollutants to contaminate stormwater discharges.



## Women in Aviation Conference Comes to Long Beach

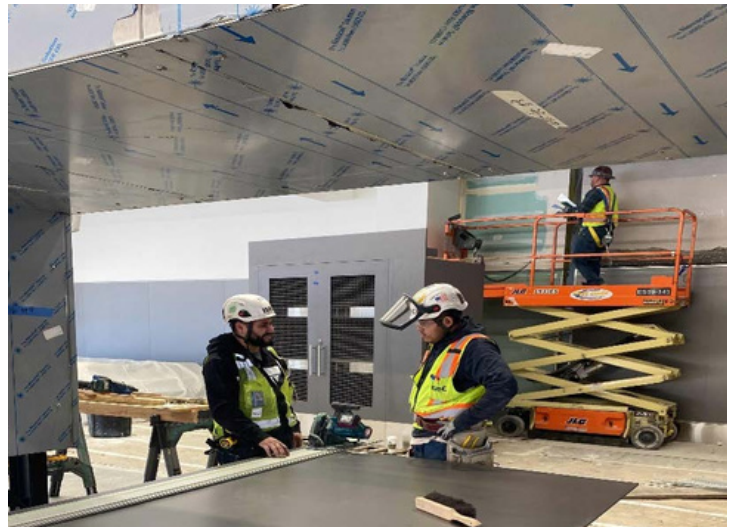
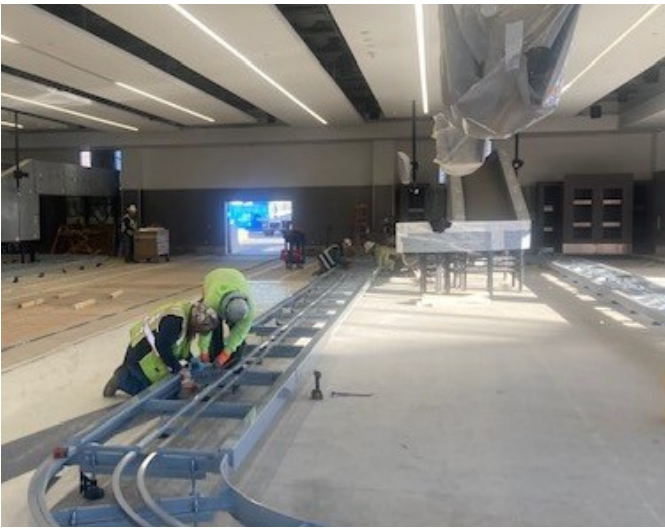
It was a special treat for the Women in Aviation International Conference to take place in Long Beach this year. From February 23-25, attendees heard from inspiring keynote speakers and participated in professional development seminars and education sessions. I was thrilled to attend the conference and connect with so many women of all ages who are passionate about the aviation industry. Pictured below is me with Airport Operations employees Elaine Russell (left) and Daina Fundi (right).

### Welcome to the 34th Annual Women in Aviation International Conference!

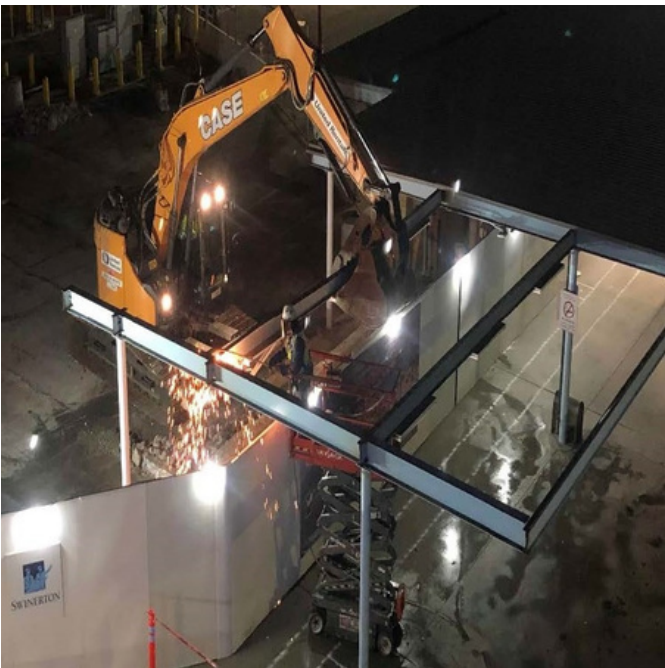


## Phase II Construction Update

Installation of the carousels for the new Baggage Handling System and phenolic panels is underway in the new Baggage Claim area. Phenolic panels are based on thermosetting resins, homogeneously reinforced with wood fibers, and manufactured under high pressure and temperature. The highly durable, non-porous wall covering is particularly suitable for exterior applications. And in the adjacent Plaza area behind the construction barricades, the former Baggage Claim 1 has been dismantled. Grading, removal of existing utilities, underground electrical and asphalt work is expected to begin later this month. This facility is expected to open in the coming months!



Installation of the carousels and phenolic panels is underway



The former Baggage Claim 1 has been dismantled

## Seen at the Scene

Long Beach Airport visitors on Valentine's Day received a sweet gift: free love poems from RENT Poet and Harper Collins Author Brian Sonia-Wallace. The custom love poetry, crafted for travelers' loved ones while they waited for their flights, were printed on an antique typewriter on site by the talented local poet.



LGB recently welcomed 25 visitors from the South East Queensland Council of Mayors from Brisbane. The mayoral delegation met with Long Beach Mayor Rex Richardson and toured the airport and other destinations in Long Beach, while learning more about the upcoming 2028 Olympics in Los Angeles. Australia will host the games in 2032. The tour was conducted in partnership with the Long Beach Economic Partnership and focused on sharing more about local companies such as Virgin Orbit and Wisk Aero, as well as Long Beach's Advanced Air Mobility working group.



As part of a partnership with Long Beach State Athletics, LGB staff and volunteers attended a men's basketball game with complimentary LGB-branded jerseys for youth attendees!



Guide Dogs of America hosted a training for 20 canines and their handlers at LGB. The organization breeds, raises and trains guide dogs for individuals who are blind/visually impaired and service dogs for veterans and children with autism. One component of the dogs' training is to learn how to help their owners navigate airports.



## March is Women's History Month

March is Women's History Month! During World War II, many women came to work for the Douglas Aircraft plant in Long Beach. Women could be found welding, wiring, and operating hydraulic presses. Check out our social media pages this month to hear more stories about women who played a pivotal role in the history of aviation in Long Beach.



## Looking Back on 100 Years

The Academy Awards are this month, reminding us of LGB's ties to Hollywood and the film industry throughout its 100-year history. You can catch glimpses of our Airport and Historic Terminal in major blockbusters in nearly every decade—for instance, in "Executive Suite" (1954), which was nominated for multiple Academy Awards!

And, as we celebrated Presidents Day in 2023, here's a look back at some of LGB's presidential visitors, including Franklin D. Roosevelt touring Douglas Aircraft in 1942; Richard Nixon's arrival at Long Beach Airport in 1956; Air Force One transporting Barack Obama in 2009; and pictured below, Air Force One in 2021 with President Joe Biden.



To learn more about the history of the oldest municipal airport in California, celebrating its 100th anniversary this year, check out our [Long Beach Aviation History web page](#).

## New Bessie Coleman Quarter

The United States Mint recently began issuing a Bessie Coleman quarter as part of its American Women Quarters Program. From the U.S. Mint's press release: "Bessie Coleman was a pilot, advocate, and pioneer who flew to great heights as the first African American and first Native American woman pilot and first African American to earn an international pilot's license. The reverse design depicts Bessie Coleman as she suits up in preparation for flight, her expression reflective of her determination to take to the skies, the only place she experienced a freedom she did not have on the ground." I'm so happy that this legendary figure was honored this way, especially during Black History Month!



## January Passenger Activity

Long Beach Airport (LGB) served 260,199 passengers in January 2023. Airline passenger traffic at LGB increased 35.6% in January 2023 compared with the same time in 2022. Total air cargo carried by aircraft, both inbound and outbound, decreased 19.8% in January 2023 compared to the same time the previous year; 1,012 tons passed through LGB in January 2023.

	Jan 2023	Jan 2022	% Change	Jan 2021	% Change	Jan 2020	% Change	Jan 2019	% Change	YTD 2023	YTD 2022	% Change	YTD 2021	% Change	YTD 2020	% Change	YTD 2019	% Change
<b>Passenger Traffic</b>																		
Enplanements	129,217	95,787	34.9%	20,060	544.2%	144,226	-10.4%	132,942	-2.8%	129,217	95,787	34.9%	20,060	544.2%	144,226	-10.4%	132,942	-2.8%
Deplanements	130,982	96,079	36.3%	21,194	518.0%	143,844	-8.9%	132,047	-0.8%	130,982	96,079	36.3%	21,194	518.0%	143,844	-8.9%	132,047	-0.8%
<b>Total Passenger</b>	<b>260,199</b>	<b>191,866</b>	<b>35.6%</b>	<b>41,254</b>	<b>530.7%</b>	<b>288,070</b>	<b>-9.7%</b>	<b>264,989</b>	<b>-1.8%</b>	<b>260,199</b>	<b>191,866</b>	<b>35.6%</b>	<b>41,254</b>	<b>530.7%</b>	<b>288,070</b>	<b>-9.7%</b>	<b>264,989</b>	<b>-1.8%</b>
<b>Total Air Cargo (Tons)</b>	<b>1,012</b>	<b>1,262</b>	<b>-19.8%</b>	<b>991</b>	<b>2.1%</b>	<b>1,567</b>	<b>-35.4%</b>	<b>1,728</b>	<b>-41.4%</b>	<b>1,012</b>	<b>1,262</b>	<b>-19.8%</b>	<b>991</b>	<b>2.1%</b>	<b>1,567</b>	<b>-35.4%</b>	<b>1,728</b>	<b>-41.4%</b>



Cynthia Guidry  
Airport Director