

BUSINESS PARTNER BRIEF

AUGUST 2023



Director's Message

Greetings! It's thrilling to see travelers enjoying the perfect sunny weather at Long Beach Airport. In the heat of the season, we have plenty of hot news to share in this month's Business Partner Brief.
– Cynthia Guidry

Exciting New Destinations

Launching to three new nonstop destinations, Southwest's inaugural daily flights to Colorado Springs (COS) and El Paso (ELP), and the first weekly service departure to Orlando (MCO), took flight last month. It's wonderful to see our route map fill up with more exciting destinations—air carriers at Long Beach Airport now offer service to 24 nonstop destinations around the nation, which is more than at any time in our 100-year history. We'll also soon see daily service added to Albuquerque (ABQ) beginning September 5, as well as Boise (BOI) and Portland (PDX) starting October 7.



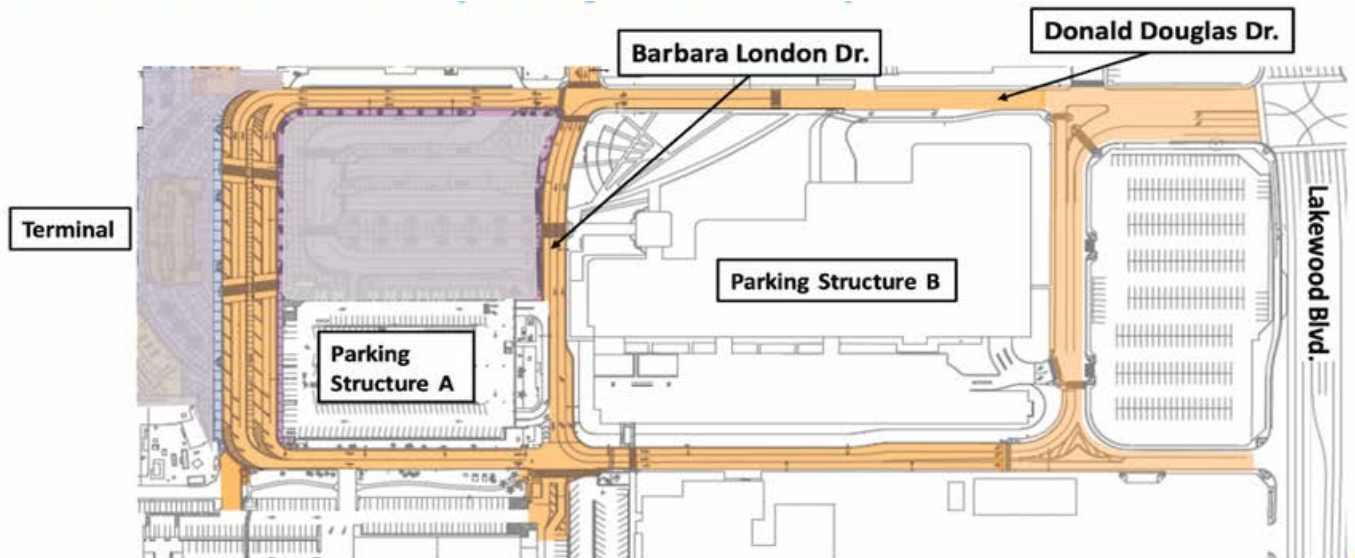
Flight Slots Reallocated

In addition to adding those new destinations, Southwest Airlines picked up another two permanent flight slots, following the recent relinquishment of those slots by Delta Air Lines. Airport flight slots are awarded based on a waiting list of official requests from current LGB air carriers that have expressed interest in additional service, as well as new entrants interested in starting service at LGB. Southwest Airlines was the only carrier that requested slots for this opportunity. Here's the current breakdown of flight slots by carrier:

Air Carrier	Permanent Flight Slots	Supplemental Flight Slots	Total Flight Slots
Delta Air Lines	5	0	5
Hawaiian Airlines	2	0	2
Southwest Airlines	33	17	50
UPS	1	0	1
TOTAL	41	17	58

Terminal Roadway Project Approved

The Long Beach City Council recently approved our plans for the Terminal Roadway Improvement Project. This project, which received \$10.6 million from the Bipartisan Infrastructure Law, is scheduled to officially break ground in early 2024. Work will focus on terminal area vehicular and pedestrian improvements, which have long been planned as part of the Phase II - Terminal Area Improvement Program. The passenger pick-up and drop-off will be enhanced with an additional crosswalk, expanded sidewalks, added signage and more ADA accessibility. An additional lane will be added at Barbara London Drive to enhance traffic flow, and the Gulfstream leaseholder primary entrance will be relocated to reduce traffic congestion. See our presentation to City Council [here](#).

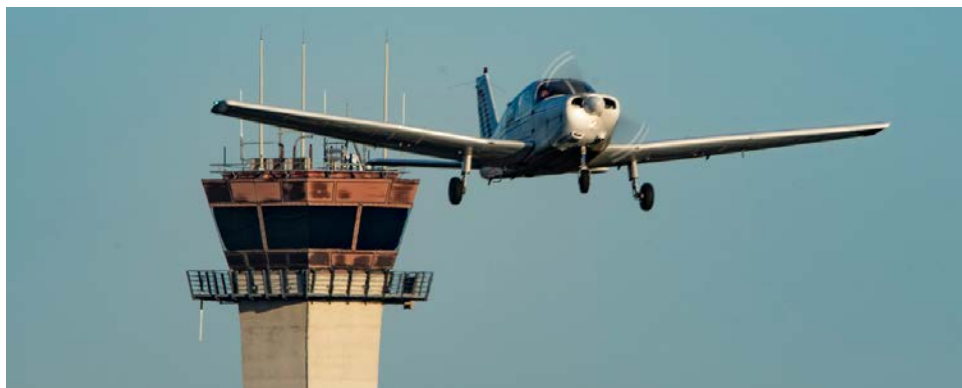


Unleaded Fuel Arriving at LGB

Under a directive from the Long Beach City Council, the City Manager has been working with the Airport and its stakeholders to establish plans to reduce lead emissions and implement programs to transition to unleaded aviation gasoline (AvGas). As part of that effort, the City Council voted in December to amend the Master Fee and Charges Schedule to exempt unleaded AvGas from fuel flowage fees for the three-year period of 2023-2025.

More recently, Signature Flight Support—coordinating fueling services as part of Aeroplex Aviation at LGB—has been working diligently to implement an interim program using mobile fuel trucks to initiate the sale of unleaded AvGas until permanent infrastructure and facilities are constructed. The commencement for the sale of unleaded AvGas at LGB is scheduled for the first week of August 2023. Signature has coordinated with Swift Fuels of Indiana for the sale of Swift’s UL94 product at LGB. Swift currently supplies UL94 to airports in Los Angeles and San Diego counties. UL94 is capable of servicing approximately 75 percent of the nation’s piston-powered fleet.

For more details about unleaded fuel options, including the FAA’s continued work with the Eliminate Aviation Gasoline Lead Emissions (EAGLE) initiatives, read the City Manager’s recent memo [here](#).

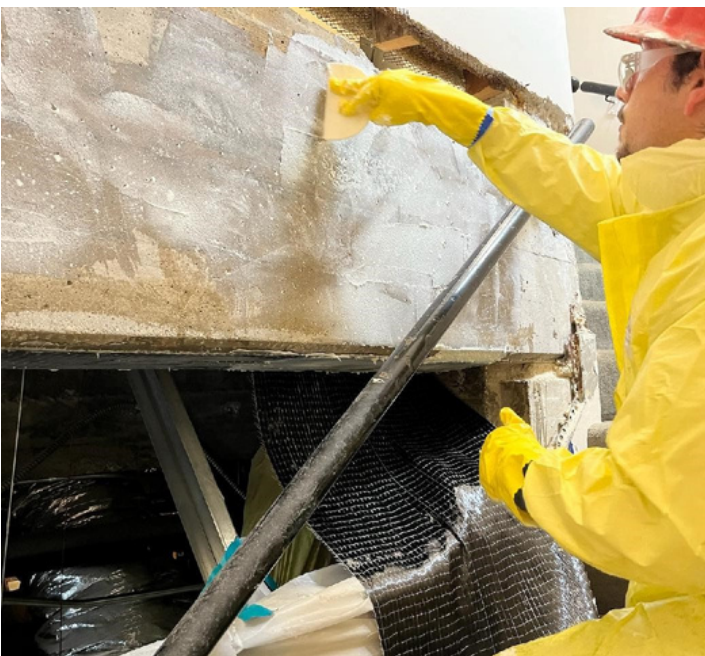


Phase II Construction Update

Construction of the new concessions space and baggage service offices reached a milestone in mid-July: the concrete foundation was poured! Structural steel for this space was delivered and erected in the weeks that followed. Meanwhile in the Historic Terminal, placement of Fiber Reinforced Polymer was completed, on the second and third floors lead paint removal around the windows continued and steel was delivered. In August, structural enhancement work will begin in the terminal.



The concrete foundation for the new concessions space was placed in July



Fiber Reinforced Polymer work was completed in the Historic Terminal

Rehabilitate Runway 12-30 Update

Electrical upgrades on Runway 12-30 are nearly complete. In July, the team completed grooving of the newly placed asphalt concrete (installing over 180 miles of shallow grooves in the runway surface to increase friction), refreshed the airfield striping in the Touchdown Zone and continued to quality check the new equipment designed to improve the safety of Runway 12-30. In August, four new constant current regulators will be installed in the airfield electrical vault. Their purpose is to maintain current in LED lights, irrespective of variations of input voltage or load resistance. Final testing and commissioning of the new airfield lighting system will bring the project to its conclusion.



Grooving of airfield pavement



Refreshing airfield striping of runway markings

Seen at the Scene

Just in time for the summer heat, new shade sails are cooling off LGB passengers. Located in the concourse garden, this recently added feature is proving popular among travelers!



The Conference of Minority Transportation Officials (COMTO) recently held its national conference in downtown Los Angeles, and we were honored to have some attendees visit LGB on an official tour. This was a great chance to highlight LGB, and they raved about our outdoor spaces and the ease from curb to gate



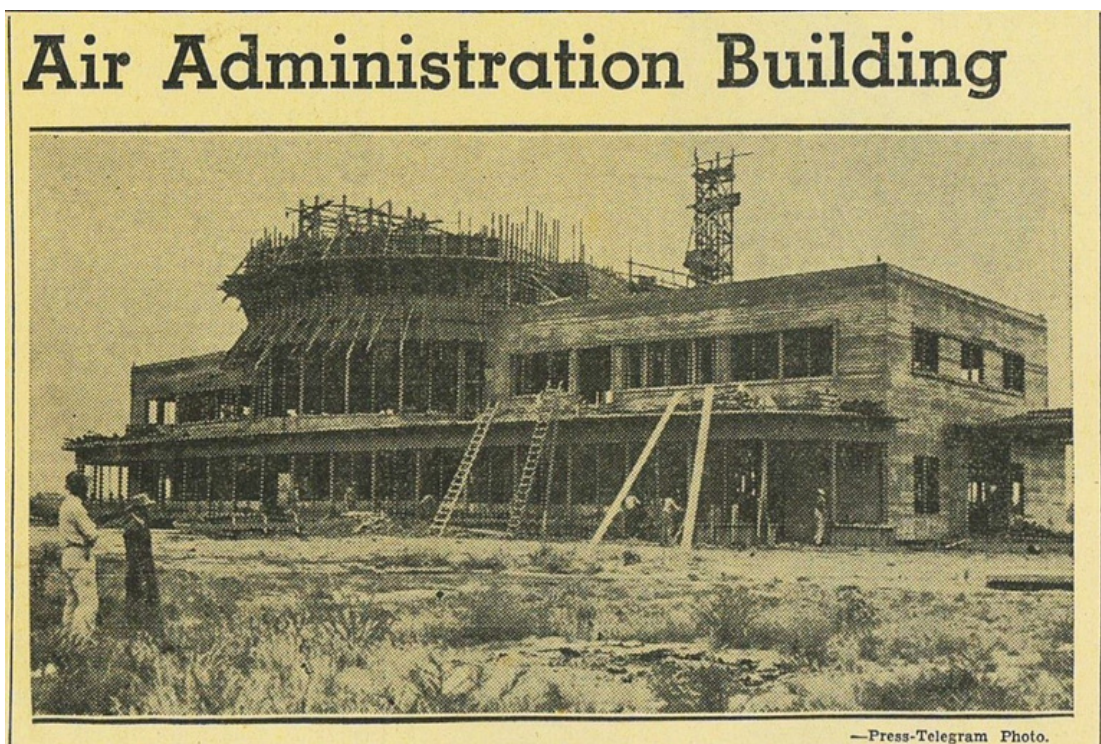
Save the Date: Plane Pull

The ultimate man-versus-machine Plane Pull for Special Olympics Southern California (SOSC) will return to Long Beach Airport on September 23. Last year, more than 60 teams raised over \$240,000 to support and empower athletes with intellectual disabilities to live healthier, happier and more fulfilling lives. Teams will test their strength, stamina and endurance to pull a 124,000-pound plane in the quickest time!



History Highlight

As we mark our 100th anniversary this year, we're looking back at Long Beach's rich aviation history. While we're currently working to preserve and add seismic retrofits to our Historic Terminal building, this old newspaper clipping shows the circa 1941 building first taking shape.



June Passenger Activity

June was a busy month! LGB served 319,472 passengers in June 2023, representing an 8.5% increase in airline passenger traffic compared with the same time in 2022. For the fourth consecutive month, that figure exceeded pre-pandemic levels compared to the same month in 2019.

	Jun 2023	Jun 2022	% Change	Jun 2021	% Change	Jun 2020	% Change	Jun 2019	% Change	YTD 2023	YTD 2022	% Change	YTD 2021	% Change	YTD 2020	% Change	YTD 2019	% Change
Passenger Traffic																		
Enplanements	161,795	149,182	8.5%	100,384	61.2%	12,674	1176.6%	154,226	4.9%	873,330	768,434	13.7%	380,671	129.4%	370,833	135.5%	858,595	1.7%
Deplanements	157,677	145,133	8.6%	98,712	59.7%	12,652	1146.3%	152,711	3.3%	872,426	762,330	14.4%	379,624	129.8%	372,979	133.9%	856,359	1.9%
Total Passenger Traffic	319,472	294,315	8.5%	199,096	60.5%	25,326	1161.4%	306,937	4.1%	1,745,756	1,530,764	14.0%	760,295	129.6%	743,812	134.7%	1,714,954	1.8%
Total Air Cargo (Tons)	965	1,077	-10.4%	1,220	-20.9%	1,202	-19.7%	1,775	-45.6%	6,105	7,008	-12.9%	6,343	-3.8%	8,074	-24.4%	10,463	-41.7%

Airport Admin Office Holiday Closure

Long Beach Airport's administrative offices will be closed on Monday, September 4, in observance of Labor Day. Airport operations, security and building services will continue uninterrupted.



Cynthia Guidry
Airport Director