

# BUSINESS PARTNER BRIEF

## JUNE 2023



### Director's Message

Greetings! It's summertime at Long Beach Airport, and travelers are making the most of our sunshine—sitting on benches around palm trees and enjoying LGB Live! summer music. In this Business Partner Brief, I'll share more about that, as well as other LGB happenings.

—Cynthia Guidry

### Spotlight: Cynthia Pineda with LAZ

This month, we'd like to shine a spotlight on Cynthia Pineda, Airport Parking Manager for LAZ Parking. LAZ took over management of the Airport's parking structures and surface lots last month.



Q: Can you talk about the LAZ operation at LGB?

A: LAZ oversees the parking operations at Long Beach Airport, including managing monthly tenant parking. Additionally, LAZ will assist the Airport in procuring a new Parking Access Revenue Control System this summer as well as leading a new Navigator Program for in-person customer service. My work is focused on implementing the most effective policies and procedures to be aligned with the Airport's needs and providing exceptional customer service. LAZ's operations team at LGB consists of 24 employees.

Q: Can you please share a bit about your professional background and how you got involved in aviation?

A: I've served the airport segment of parking for more than 14 years and have been a part of the LAZ Parking team for six years, serving as the Assistant General Manager at John Wayne Airport (SNA). I have also supported our team on special projects and task forces for Cross Border Xpress (CBX), Manchester-Boston Regional Airport (MHT), Pittsburgh International Airport (PIT) and Nashville International Airport (BNA). Most recently, I briefly served as the Interim Assistant General Manager at Sacramento International Airport (SMF).

Q: What do you enjoy most about working at LGB?

A: Long Beach has always been one of my favorite places in Southern California, and it's a pleasure working in this community with the Airport and the people we serve. Within the first week working at LGB, Airport staff welcomed me with open arms and graciously allowed me into their team. The attitude seems to be specifically designed to set each other up for success, and I feel included. I will pass on this same positive attitude to our associates and use my expertise in guest services to ensure that the favor is returned through a mindset to go above and beyond to serve the community that supports our Airport.

Q: Do you have any hobbies or other parts about your personal life that you'd like to share?

A: I enjoy traveling and most recently traveled to New York in celebration of my daughter's 13th birthday.

## Three Flight Slots Reallocated

Southwest Airlines was recently awarded three more of Long Beach Airport's permanent flight slots. The slots were relinquished earlier this year by American Airlines. In accordance with the Airport's reallocation process, including outreach to carriers on the waiting list, Southwest Airlines was awarded the slots. Two more permanent flight slots recently relinquished by Delta Air Lines will soon go through the reallocation process. The table below lists the air carriers, in addition to the number and type of flight slots that each air carrier is now currently allocated.

Air Carrier	Permanent Flight Slots	Supplemental Flight Slots	Total Flight Slots
Delta Air Lines	5	0	5
Hawaiian Airlines	2	0	2
Southwest Airlines	31	17	48
UPS	1	0	1
Unallocated Slots	2	0	2
<b>TOTAL</b>	<b>41</b>	<b>17</b>	<b>58</b>

## LGB's Charm Recognized

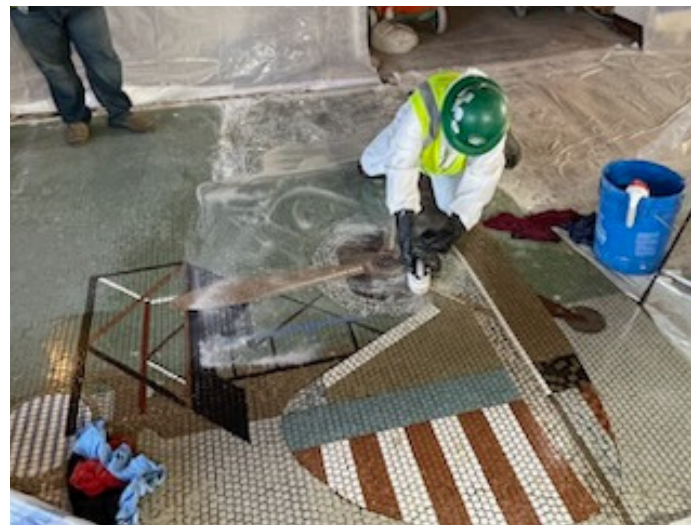
Long Beach Airport is one of America's Most Charming Airports! Nerdwallet recently ranked LGB 9th nationwide based on our airport's indoor-outdoor modernizations, historic character, local food options, stress-free atmosphere, on-time arrivals rate and more. Read all about it at <https://www.nerdwallet.com/article/travel/charming-airports>.

## Sustainability Plan

LGB recently kicked off efforts for the Airport's first Sustainability Action Plan (SAP), which is an important step in making Airport operations more eco-friendly. The SAP will shape a pathway for current and proposed goals and initiatives using key performance indicators and targets. LGB expects to produce a best-in-class, actionable SAP that is informed by data and stakeholder engagement. Focus areas of the SAP will include air emissions, energy conservation, water conservation, water quality, solid waste and recycling, community engagement and noise management. Our plan is to have a SAP completed within a year and that it will be a working document, easy to read and updated on a regular basis.

## More Mosaics Revealed

As part of the ongoing renovation work in the Historic Terminal, the team recently uncovered another mosaic tile vignette depicting a prop airplane by artist Grace Clements. This is one of four vignettes expected to be uncovered during the renovation work. These four vignettes are in the former Airline Ticket Office (ATO) space and likely haven't been uncovered for decades. Our historic resource specialist was on hand to ensure that all the proper protocols were followed to ensure the preservation of this newly revealed artwork. Even after so many years, it continues to inspire!



## Phase II Construction Update

Construction of a new shade structure near the security screening checkpoint continues to move forward each night. Installation of the canopy is expected to be completed this month – just in time for summer travel!

Work continues in the Historic Terminal, including the placement of Fiber Reinforced Polymer (FRP) on the first floor and shotcrete (sprayed concrete projected at high velocity to reinforce steel rods) in the basement and first two floors, as well as demolition work on the fifth floor. Adjacent to the terminal, excavating and underground electrical work is underway for the new baggage service offices and a new concession space.



Grading work for a new shade canopy



Flooring removal in the Historic Terminal



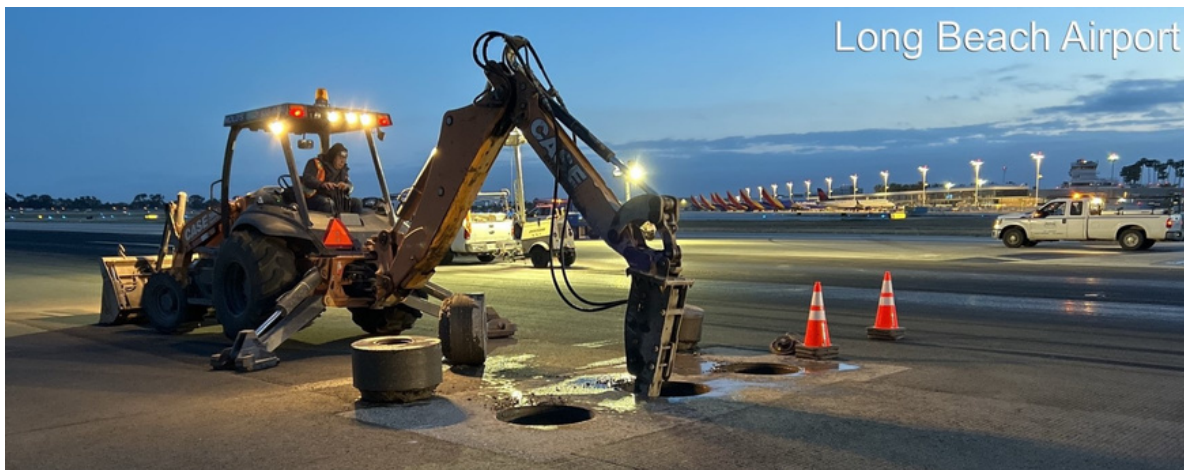
Excavating and underground electrical work for the new BSO and concession is underway



## Rehabilitate Runway 12-30 Update

Electrical upgrades designed to improve safety of Runway 12-30 are underway to bring the Airport's longest runway in line with the latest FAA standards. Most work takes place during nighttime hours. Congratulations to our entire team for successfully completing the six weeks of daily closures as planned. During the six weeks of daytime temporary runway closures, work included the removal and replacement of 57 touchdown zone barrettes (that's 171 base cans, 180 touchdown zone light fixtures and over 1,400 feet of new trenched conduit to support these lights!); replacement of 198 incandescent runway edge lights and 128 centerline lights with new energy-efficient LED lights; replacement of over 130,000 feet of cable and grounding to support the new lights; and installation of a new, modern navigational aid - Precision Approach Path Indicator (PAPI), as well as milling and overlay work of approximately 3,700 tons of asphalt concrete and replacement of airfield striping disturbed by this paving.

As a reminder, during Runway 12-30 closures, operations will occur on Runway 8L-26R (with a few exceptions when they will shift to 8R-26L). Runway 12-30 will be closed nightly, Sundays through Thursdays, through mid-July. Exact dates are subject to change, and details are available on the Airport's [Current Noise Advisories](#) webpage.



Removal of old base cans in the touchdown zone



Conduit installation for runway guard lights



Encasing new touchdown zone base cans



Placing new LED centerline lights

## Jet Zero Announcement

Long Beach Airport-based JetZero, in partnership with Northrop Grumman, has aviation experts asking if the time has arrived for a blended wing body (BWB) aircraft. The local company recently unveiled innovative design plans for a Z-5, which could be used for midsize commercial purposes and military tanker-transports, according to news coverage in [Aviation Week](#). The publication Popular Mechanics also recently featured the company's proposal for the Z-5. JetZero is targeting the 2030s for the quieter and more efficient new aircraft for service. At LGB, we're excited to watch these aviation developments happen in our own backyard. Congratulations, JetZero!

## Seen at the Scene

Have you seen the new benches in front of our Ticketing Lobby? It's been wonderful to see our passengers taking advantage of the beautiful weather and sit outdoors on these stylish seats surrounding our palm trees



Out on the baseball diamond with the Dirtbags, I was thrilled to represent LGB as I threw the ceremonial first pitch at one of Long Beach State's baseball games in May. Our Airport was a proud gameday sponsor, and we had a table at the event with giveaways. Plus, our LGB tagline also looked great on Blair Field's new video scoreboard! GO BEACH!



We are so fortunate to have an incredible group of volunteers who help as ambassadors for Long Beach Airport, greeting guests, serving as tour guides, helping behind the scenes and representing LGB at various community events. LGB's amazing volunteers logged nearly 1,700 hours of community service last year! We were honored to celebrate these dedicated individuals at an appreciation luncheon recently.



For the second consecutive year, LGB proudly sponsored the Kids Hub at the City's annual Beach Streets in the downtown area. Thousands rolled out into the open streets—which were closed to automobile traffic for the event—to bike and skate in the 1.5-mile stretch. There was plenty of fun and entertainment in the Kids Zone!



The LGB Live! summer concert series is underway! About 20 live shows by local artists will welcome and entertain travelers through Labor Day. You'll hear the music playing mostly on Friday afternoons.

## Festival of Flight Sponsorships

Long Beach Airport's signature annual event, the Festival of Flight, will come in for another fantastic landing on October 21! The aviation festival, which is our biggest public event of the year, will kick off a celebration of our Airport's 100th anniversary. We're seeking sponsors who would like to help make this event bigger and better than ever before! Contact [Kate.Kuykendall@longbeach.gov](mailto:Kate.Kuykendall@longbeach.gov) for details.



**FESTIVAL OF FLIGHT**  
2023

**October 21, 2023**  
**10 a.m. - 4 p.m.**

Join us for the Festival of Flight, a FREE celebration featuring food & beer trucks, static aircraft and live entertainment.



E. 36th St  
Cherry Ave.  
N  
E. Wardlaw Road  
Event Parking  
Oxley Ave. Hwy

LGB Airfield  
Taxiway E  
3590 E. Wardlaw Road  
Long Beach, CA 90807

For more information: 562-570-2678 or [lgbairpt@longbeach.gov](mailto:lgbairpt@longbeach.gov)  
We encourage you to rideshare or use public transportation.  
No pets, coolers or large bags allowed. All bags subject to search.



long beach  
airport  
[lgb.org/lbfof](http://lgb.org/lbfof)

## History Highlight

As we mark our 100th anniversary this year, we're enjoying looking back in time. In May of 1987, for example, the Spruce Goose public exhibit—showcasing the largest flying boat ever built—opened in the dome next to The Queen Mary. The plane successfully took flight off the coast of Long Beach in 1947 and is a unique part of Long Beach's rich aviation history.



## April Passenger Activity

LGB served 303,086 passengers in April. Airline passenger traffic at Long Beach Airport increased 10.5% in April 2023 compared with the same time in 2022. We look forward to robust demand for air travel this summer.

	Apr 2023	Apr 2022	% Change	Apr 2021	% Change	Apr 2020	% Change	Apr 2019	% Change	YTD 2023	YTD 2022	% Change	YTD 2021	% Change	YTD 2020	% Change	YTD 2019	% Change
<b>Passenger Traffic</b>																		
Enplanements	150,835	136,399	10.6%	80,384	87.6%	3,231	4568.4%	148,927	1.3%	557,608	477,882	16.7%	184,810	201.7%	352,471	58.2%	552,410	0.9%
Deplanements	152,251	137,982	10.3%	80,585	88.9%	3,068	4862.5%	148,014	2.9%	559,806	475,869	17.6%	183,584	204.9%	354,449	57.9%	550,330	1.7%
<b>Total Passenger Traffic</b>	<b>303,086</b>	<b>274,381</b>	<b>10.5%</b>	<b>160,969</b>	<b>88.3%</b>	<b>6,299</b>	<b>4711.7%</b>	<b>296,941</b>	<b>2.1%</b>	<b>1,117,414</b>	<b>953,751</b>	<b>17.2%</b>	<b>368,394</b>	<b>203.3%</b>	<b>706,920</b>	<b>58.1%</b>	<b>1,102,740</b>	<b>1.3%</b>
<b>Total Air Cargo (Tons)</b>	<b>958</b>	<b>1,187</b>	<b>-19.3%</b>	<b>1,092</b>	<b>-12.3%</b>	<b>1,196</b>	<b>-19.9%</b>	<b>1,655</b>	<b>-42.1%</b>	<b>4,266</b>	<b>4,847</b>	<b>-12.0%</b>	<b>4,053</b>	<b>5.3%</b>	<b>5,606</b>	<b>-23.9%</b>	<b>6,823</b>	<b>-37.5%</b>

## Airport Admin Office Holiday Closures

Long Beach Airport administrative offices will be closed on Monday, June 19, in observance of Juneteenth, as well as Tuesday, July 4, in observance of Independence Day. Airport operations, security and building services will continue uninterrupted.



Cynthia Guidry  
Airport Director