

Airport Advisory Commission

Geetanjali Reuben
Chair

Katie Larson
Vice Chair

Kenneth Brown

Wayne Chaney Sr.

Mireya LaFarga

Dede Rossi

Randy Zarn



long beach
airport



Airport Management

Cynthia Guidry
Director

Juan López-Rios
Deputy Airport Director

Ken Mason
Executive Assistant

Claudia Lewis
Manager of Administration &
Finance

Ron Reeves
Airport Operations & Facilities
Manager

Stephan Lum
Engineering Officer

Dale Worsham
Development Services Officer

Terry Ward
Operations Liaison Officer

Scott Garrett
Facilities Management Officer

Mony Chhey
Financial Services Officer

Scott Korobkin
Superintendent of Safety & Security

Kate Kuykendall
Public Affairs Officer

Melissa DeAmicis
Administrative Officer

Ryan McMullan
Noise & Environmental Affairs Officer



Long Beach Airport Monthly Noise Report May 2023

COMMERCIAL AIRCRAFT LATE NIGHT ACTIVITY
LGB Current Month & Calendar Year-To-Date Statistics (10 PM- 7AM)
May 2023

May				Calendar Year-To-Date		
10PM - 11PM Activity	2023	2022	Change	2023	2022	Change
Air Carrier & Commuter Operations	2,735	2,703	1.2%	13,479	13,221	2.0%
American/Mesa/SkyWest/Envoy	0	0		1	0	100.0%
Delta/SkyWest Airlines	3	1	200.0%	17	9	88.9%
Hawaiian Airlines	0	0		2	1	100.0%
Southwest Airlines	6	3	100.0%	20	15	33.3%
UPS	0	0		0	1	-100.0%
Subtotal 10PM-11PM	9	4	125.0%	40	26	53.8%
11PM- 7AM Activity	2023	2022	Change	2023	2022	Change
American/Mesa/SkyWest/Envoy	0	0		0	0	
Delta/SkyWest Airlines	0	0		1	0	100.0%
Hawaiian Airlines	6	0	600.0%	7	2	250.0%
Southwest Airlines	1	0	100.0%	1	1	0.0%
UPS	0	0		1	0	100.0%
Subtotal 11PM-7AM	7	0	700.0%	10	3	233.3%
TOTAL	16	4	300.0%	50	29	72.4%

Notes:

0.6% (16 of 2,735) of total commercial operations occurred between 10pm - 7am.
0.5 flights - Nightly average for all late night (10:00 PM—7:00 AM) commercial flights, includes unanticipated delays.
0.2 flights - Nightly average for commercial flights after 11 PM.

AIRPORT NOISE VIOLATIONS						
LGB Current Month & Calendar Year-To-Date Statistics						
May 2023						
May				Calendar Year-To-Date		
Air Carrier Noise Violations	2023	2022	Change	2023	2022	Change
American/Mesa/SkyWest/Envoy	0	0		0	0	
Delta/SkyWest Airlines	0	0		1	0	100.0%
Hawaiian Airlines	5	0	500.0%	5	1	400.0%
Southwest Airlines	0	0		0	0	
UPS	0	0		1	0	100.0%
Subtotal	5	0	500.0%	7	1	600.0%
Commuter Noise Violations	2023	2022	Change	2023	2022	Change
American/Mesa/SkyWest/Envoy	0	0		0	0	
Delta/SkyWest Airlines	0	0		0	0	
Subtotal	0	0		0	0	
Non-Commercial Noise Violations	2023	2022	Change	2023	2022	Change
All GA, Charter & Other	10	7	42.9%	48	32	50.0%
TOTAL	15	7	114.3%	55	33	66.7%
Monetary Fines	2023	2022		2023	2022	
Airport Surcharges	\$1,800	\$0		\$2,500	\$400	
Consent Decree	\$0	\$0		\$0	\$0	
TOTAL	\$1,800	\$0		\$2,500	\$400	

AIRPORT OPERATIONS						
LGB Current Month & Calendar Year-To-Date Statistics						
May 2023						
May				Calendar Year-To-Date		
Airport Operations (FAA)	2023	2022	Change	2023	2022	Change
Air Carrier + Commuter Carriers	2,735	2,703	1.2%	13,479	13,221	2.0%
Air Taxi + General Aviation	24,496	22,581	8.5%	122,857	130,265	-5.7%
Military Operations	80	81	-1.2%	417	507	-17.8%
Total Aircraft Operations	27,311	25,365	7.7%	136,753	143,993	-5.0%

Notes:

0.06% (15 of 27,231) of the Airport's total aircraft operations (Commercial & GA) resulted in an aircraft noise violation.
0.2% (5 of 2,735) of the Airport's Commercial operations (Commercial & Commuter) resulted in an aircraft noise violation.

AIRCRAFT NOISE VIOLATORS

May 2023

OWNERNAME	DATE	TIME	A/D	RWY	FLIGHT #	A/C TYPE	ORIG/DEST	SEL	LIMIT	STATUS
Hawaiian Airlines	5/4/2023	6:22:01	A	30	HAL8069	A21N	HNL	90.9	90.0	VIO
Hawaiian Airlines	5/4/2023	6:53:16	A	30	HAL52	A21N	HNL	94.4	90.0	VIO
She Jane LLC	5/7/2023	11:34:40	A	26R		B350		90.8	88.0	VIO
Go Far Aviation LLC	5/7/2023	18:45:34	A	26R		C525		90.7	88.0	VIO
Advanced Air LLC	5/11/2023	21:19:19	A	26R		PC12		91.0	88.0	VIO
Hawaiian Airlines	5/13/2023	2:21:35	A	30	HAL72	A21N	OGG	94.9	79.0	VIO
Private	5/13/2023	4:14:02	D	30		C421		86.3	79.0	VIO
Moran Consulting Corp.	5/13/2023	5:18:35	D	30		BE35		88.4	79.0	VIO
TVPX Aircraft Solutions Inc Trustee	5/13/2023	23:11:23	D	30		GLF4		84.8	79.0	VIO
Hawaiian Airlines	5/13/2023	23:58:13	A	30	HAL70	A21N	HNL	93.7	79.0	VIO
Hawaiian Airlines	5/25/2023	6:51:53	A	30	HAL52	A21N	HNL	92.6	90.0	VIO
Into Air LLC	5/28/2023	5:11:02	D	30		H25B		92.3	79.0	VIO
Laconte Dassault LLC	5/28/2023	23:31:39	A	30		F900		86.2	79.0	VIO
N4488T LLC	5/29/2023	23:23:48	A	30		P28R		82.3	79.0	VIO
MH Aviation Inc.	5/30/2023	5:47:16	A	26L		C172		n/a	n/a	VIO

DEFINITIONS:

A/C Type — Aircraft Type

A/D — Arrival/Departure

RWY — Runway

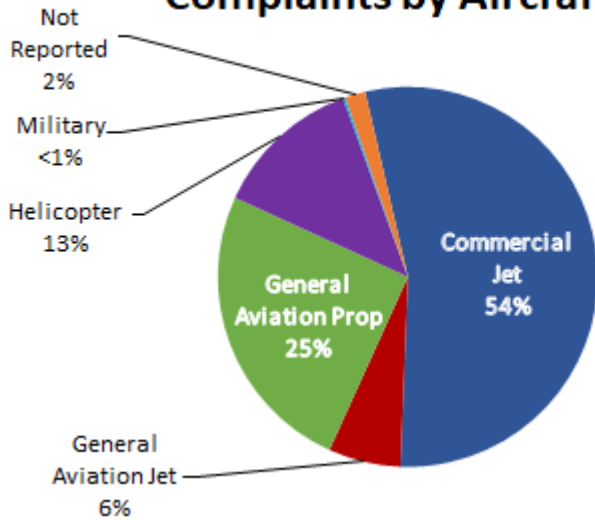
SEL — SENEL — Single Event Noise Exposure Level (dBA)

VIO — Violation

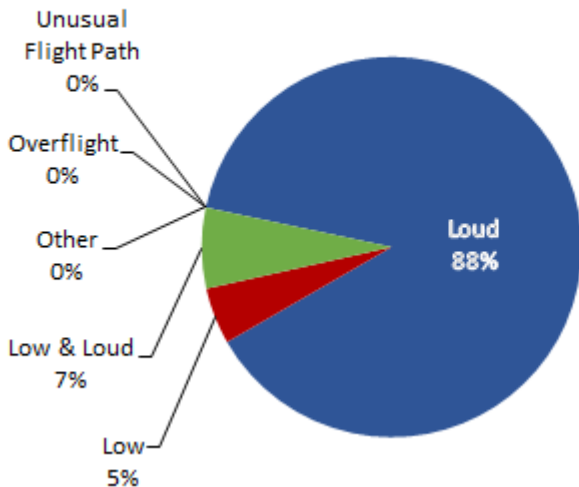
LGB AIRCRAFT NOISE COMPLAINTS

May 2023

Complaints by Aircraft Types



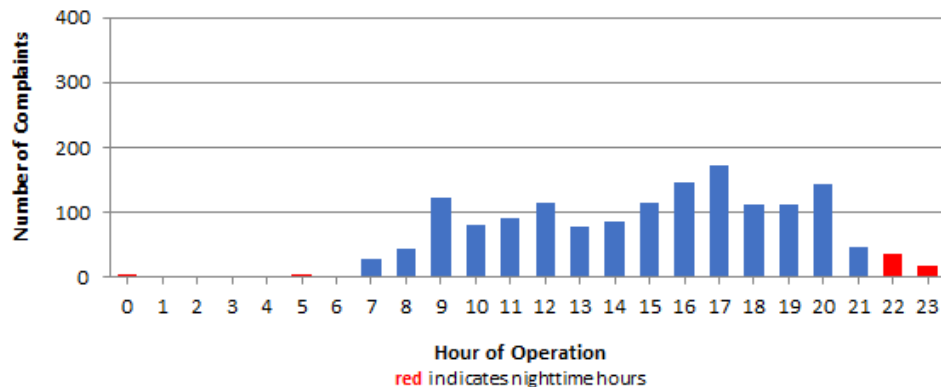
Complaints by Concern



Complaints by Zip Code

Zip Code	Complaints	Units
90242	41	1
90254	4	1
90278	30	1
90713	1	1
90720	1	1
90746	1	1
90805	6	2
90806	1	1
90807	160	29
90808	64	30
90815	3	3
91364	1	1
92626	401	1
92627	3	1
92646	1	1
92647	647	2
92648	154	7
92649	29	3
92651	1	1
92660	1	1
92661	1	1
92677	1	1
92692	1	1
Not Reported	7	6
Grand Total	1,560	98

Complaints by Time of Operation





long beach airport



Long Beach Airport

4100 E. Donald Douglas Drive, Long Beach, CA 90808

www.lgb.org • lgbapt@longbeach.gov

Administration • (562) 570-2619