

## Airport Advisory Commission

**Katie Larson**  
Chair

**Kenneth Brown**

**Wayne Chaney Sr.**

**Mireya LaFarga**

**Geetanjali Reuben**

**Dede Rossi**



**long beach**  
airport



## Airport Management

**Cynthia Guidry**  
Director

**Juan López-Rios**  
Deputy Airport Director

**Ken Mason**  
Executive Assistant

**Claudia Lewis**  
Manager of Administration &  
Finance

**Ron Reeves**  
Airport Operations & Facilities  
Manager

**Stephan Lum**  
Engineering Officer

**Dale Worsham**  
Development Services Officer

**Terry Ward**  
Operations Liaison Officer

**Scott Garrett**  
Facilities Management Officer

**Mony Chhey**  
Financial Services Officer

**Scott Korobkin**  
Superintendent of Safety & Security

**Kate Kuykendall**  
Public Affairs Officer

**Ryan McMullan**  
Noise & Environmental Affairs Officer



# Long Beach Airport Monthly Noise Report February 2023

**COMMERCIAL AIRCRAFT LATE NIGHT ACTIVITY**  
**LGB Current Month & Calendar Year-To-Date Statistics (10 PM- 7AM)**  
**February 2023**

February				Calendar Year-To-Date		
10PM - 11PM Activity	2023	2022	Change	2023	2022	Change
<b>Air Carrier &amp; Commuter Operations</b>	<b>2,536</b>	<b>2,373</b>	<b>6.9%</b>	<b>5,382</b>	<b>5,142</b>	<b>4.7%</b>
American/Mesa/SkyWest/Envoy	1	0	100.0%	1	0	100.0%
Delta/SkyWest Airlines	2	0	200.0%	6	1	500.0%
Hawaiian Airlines	0	0		0	1	-100.0%
Southwest Airlines	3	0	300.0%	6	4	50.0%
UPS	0	0		0	0	
<b>Subtotal 10PM-11PM</b>	<b>6</b>	<b>0</b>	<b>600.0%</b>	<b>13</b>	<b>6</b>	<b>116.7%</b>
11PM- 7AM Activity	2023	2022	Change	2023	2022	Change
American/Mesa/SkyWest/Envoy	0	0		0	0	
Delta/SkyWest Airlines	0	0		0	0	
Hawaiian Airlines	0	0		0	2	-200.0%
Southwest Airlines	0	1	-100.0%	0	1	-100.0%
UPS	0	0		1	0	100.0%
<b>Subtotal 11PM-7AM</b>	<b>0</b>	<b>1</b>	<b>-100.0%</b>	<b>1</b>	<b>3</b>	<b>-66.7%</b>
<b>TOTAL</b>	<b>6</b>	<b>1</b>	<b>500.0%</b>	<b>14</b>	<b>9</b>	<b>55.6%</b>

Notes:

0.2% (6 of 2,536) of total commercial operations occurred between 10pm - 7am.  
0.2 flights - Nightly average for all late night (10:00 PM—7:00 AM) commercial flights, includes unanticipated delays.  
0.0 flights - Nightly average for commercial flights after 11 PM.

**AIRPORT NOISE VIOLATIONS**  
**LGB Current Month & Calendar Year-To-Date Statistics**  
**February 2023**

February				Calendar Year-To-Date					
<b>Air Carrier Noise Violations</b>				<b>2023</b>	<b>2022</b>	<b>Change</b>	<b>2023</b>	<b>2022</b>	<b>Change</b>
American/Mesa/SkyWest/Envoy	0	0		0	0		0	0	
Delta/SkyWest Airlines	0	0		0	0		0	0	
Hawaiian Airlines	0	0		0	0		0	1	-100.0%
Southwest Airlines	0	0		0	0		0	0	
UPS	0	0		0	0		1	0	100.0%
<b>Subtotal</b>	<b>0</b>	<b>0</b>		<b>0</b>	<b>0</b>		<b>1</b>	<b>1</b>	<b>0.0%</b>
<b>Commuter Noise Violations</b>				<b>2023</b>	<b>2022</b>	<b>Change</b>	<b>2023</b>	<b>2022</b>	<b>Change</b>
American/Mesa/SkyWest/Envoy	0	0		0	0		0	0	
Delta/SkyWest Airlines	0	0		0	0		0	0	
<b>Subtotal</b>	<b>0</b>	<b>0</b>		<b>0</b>	<b>0</b>		<b>0</b>	<b>0</b>	
<b>Non-Commercial Noise Violations</b>				<b>2023</b>	<b>2022</b>	<b>Change</b>	<b>2023</b>	<b>2022</b>	<b>Change</b>
All GA, Charter & Other	6	6	0.0%	17	9	88.9%	17	9	88.9%
<b>TOTAL</b>	<b>6</b>	<b>6</b>	<b>0.0%</b>	<b>18</b>	<b>10</b>	<b>80.0%</b>	<b>18</b>	<b>10</b>	<b>80.0%</b>
<b>Monetary Fines</b>				<b>2023</b>	<b>2022</b>		<b>2023</b>	<b>2022</b>	
Airport Surcharges	\$100	\$0		\$300	\$100		\$300	\$100	
Consent Decree	\$0	\$0		\$0	\$0		\$0	\$0	
<b>TOTAL</b>	<b>\$100</b>	<b>\$0</b>		<b>\$300</b>	<b>\$100</b>		<b>\$300</b>	<b>\$100</b>	

**AIRPORT OPERATIONS**  
**LGB Current Month & Calendar Year-To-Date Statistics**  
**February 2023**

February				Calendar Year-To-Date					
<b>Airport Operations (FAA)</b>				<b>2023</b>	<b>2022</b>	<b>Change</b>	<b>2023</b>	<b>2022</b>	<b>Change</b>
Air Carrier + Commuter Carriers	2,536	2,373	6.9%	5,382	5,142	4.7%	5,382	5,142	4.7%
Air Taxi + General Aviation	24,538	27,536	-10.9%	47,381	50,829	-6.8%	47,381	50,829	-6.8%
Military Operations	87	112	-22.3%	148	216	-31.5%	148	216	-31.5%
<b>Total Aircraft Operations</b>	<b>27,161</b>	<b>30,021</b>	<b>-9.5%</b>	<b>52,911</b>	<b>56,187</b>	<b>-5.8%</b>	<b>52,911</b>	<b>56,187</b>	<b>-5.8%</b>

**Notes:**

0.02% (6 of 27,074) of the Airport's total aircraft operations (Commercial & GA) resulted in an aircraft noise violation.  
0.0% (0 of 2,536) of the Airport's Commercial operations (Commercial & Commuter) resulted in an aircraft noise violation.

# AIRCRAFT NOISE VIOLATORS

## February 2023

OWNERNAME	DATE	TIME	A/D	RWY	FLIGHT #	A/C TYPE	ORIG/DEST	SEL	LIMIT	STATUS
AGA Aviation LLC	2/6/2023	3:04:36	A	30		C650		89.7	79.0	VIO
Valley Logistics LLC	2/7/2023	0:39:09	A	30		E55P		86.8	79.0	VIO
Airrush Inc	2/13/2023	5:47:59	A	30		CL60		88.1	79.0	VIO
Pardue Hines Aviation LLC	2/18/2023	8:10:39	D	26R		BE58		94.4	92.0	VIO
Truist Equipment Finance Corp	2/22/2023	6:02:52	D	26R		BE9L		83.1	N/A	VIO
W. Morrison Consulting Group Inc	2/27/2023	17:16:57	D	26R		C414		94.9	92.0	VIO

**DEFINITIONS:**

**A/C Type** — Aircraft Type

**A/D** — Arrival/Departure

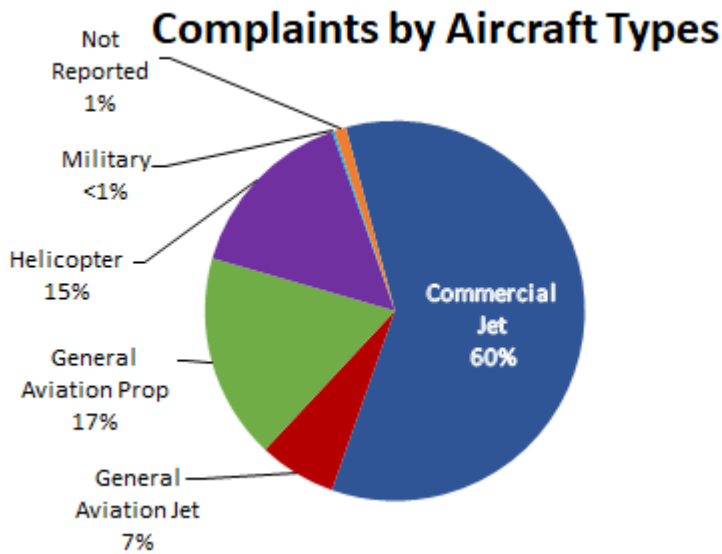
**RWY** — Runway

**SEL** — SENEL — Single Event Noise Exposure Level (dBA)

**VIO** — Violation

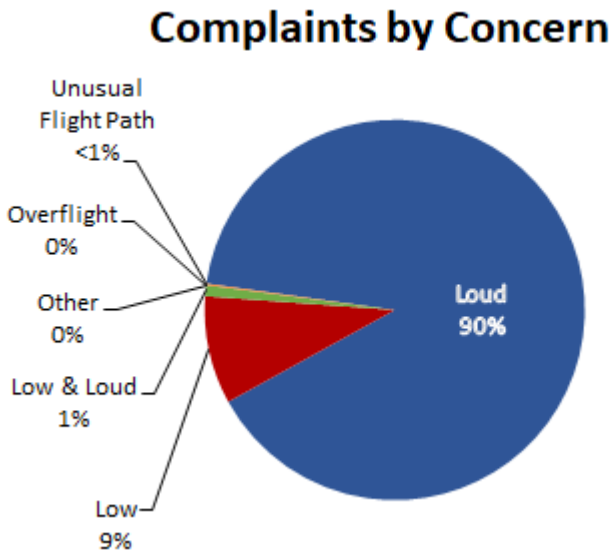
# LGB AIRCRAFT NOISE COMPLAINTS

## February 2023

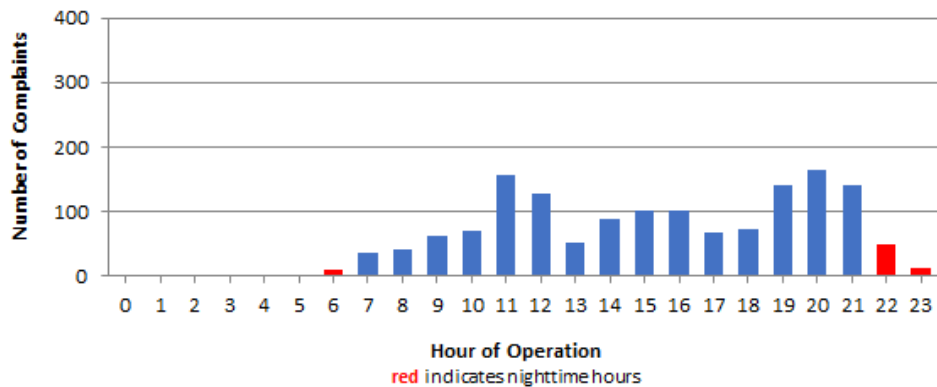


### Complaints by Zip Code

Zip Code	Complaints	Units
90242	62	1
90254	2	1
90278	8	1
90712	1	1
90740	3	2
90805	4	1
90806	1	1
90807	65	11
90808	41	2
90810	3	1
90815	1	1
91364	3	1
92626	422	1
92647	708	2
92648	151	6
92649	11	2
92651	7	1
92660	3	2
92677	3	1
92705	2	1
Not Reported	2	2
<b>Grand Total</b>	<b>1,503</b>	<b>42</b>



### Complaints by Time of Operation





# long beach airport



## Long Beach Airport

4100 E. Donald Douglas Drive, Long Beach, CA 90808

[www.lgb.org](http://www.lgb.org) • [lgbapt@longbeach.gov](mailto:lgbapt@longbeach.gov)

Administration • (562) 570-2619