

Airport Advisory Commission

Geetanjali Reuben
Chair

Katie Larson
Vice Chair

Phyllis Arias

Kenneth Brown

Wayne Chaney Sr.

Mark Christoffels

Mireya LaFarga

Dede Rossi

Randy Zarn

Airport Management

Cynthia Guidry
Director

Juan López-Rios
Deputy Airport Director

Ken Mason
Executive Assistant

Claudia Lewis
Manager of Administration &
Finance

Ron Reeves
Airport Operations & Facilities
Manager

Stephan Lum
Engineering Officer

Dale Worsham
Development Services Officer

Terry Ward
Operations Liaison Officer

Scott Garrett
Facilities Management Officer

Mony Chhey
Financial Services Officer

Scott Korobkin
Superintendent of Safety & Security

Kate Kuykendall
Public Affairs Officer

Melissa DeAmicis
Administrative Officer

Ryan McMullan
Noise & Environmental Affairs Officer



long beach
airport



Long Beach Airport Monthly Noise Report September 2023

COMMERCIAL AIRCRAFT LATE NIGHT ACTIVITY
LGB Current Month & Calendar Year-To-Date Statistics (10 PM- 7AM)
September 2023

September				Calendar Year-To-Date		
10PM - 11PM Activity	2023	2022	Change	2023	2022	Change
Air Carrier & Commuter Operations	2,936	2,634	11.5%	24,962	23,846	4.7%
American/Mesa/SkyWest/Envoy	0	0		1	0	100.0%
Delta/SkyWest Airlines	1	0	100.0%	23	22	4.5%
Hawaiian Airlines	1	0	100.0%	4	2	100.0%
Southwest Airlines	0	2	-200.0%	31	35	-11.4%
UPS	0	0		0	1	-100.0%
Subtotal 10PM-11PM	2	2	0.0%	59	60	-1.7%
11PM- 7AM Activity				2023		
	2023	2022	Change	2023	2022	Change
American/Mesa/SkyWest/Envoy	0	0		0	0	
Delta/SkyWest Airlines	1	0	100.0%	3	1	200.0%
Hawaiian Airlines	0	0		7	2	250.0%
Southwest Airlines	0	0		2	3	-33.3%
UPS	0	0		1	0	100.0%
Subtotal 11PM-7AM	1	0	100.0%	13	6	116.7%
TOTAL	3	2	50.0%	72	66	9.1%

Notes:

0.1% (3 of 2,936) of total commercial operations occurred between 10pm - 7am.

0.1 flights - Nightly average for all late night (10:00 PM—7:00 AM) commercial flights, includes unanticipated delays.

0.03 flights - Nightly average for commercial flights after 11 PM.

AIRPORT NOISE VIOLATIONS						
LGB Current Month & Calendar Year-To-Date Statistics						
September 2023						
September				Calendar Year-To-Date		
Air Carrier Noise Violations	2023	2022	Change	2023	2022	Change
American/Mesa/SkyWest/Envoy	0	0		0	0	
Delta/SkyWest Airlines	1	0	100.0%	3	0	300.0%
Hawaiian Airlines	0	0		5	1	400.0%
Southwest Airlines	0	0		0	0	
UPS	0	0		1	0	100.0%
Subtotal	1	0	100.0%	9	1	800.0%
Commuter Noise Violations	2023	2022	Change	2023	2022	Change
American/Mesa/SkyWest/Envoy	0	0		0	0	
Delta/SkyWest Airlines	0	0		0	0	
Subtotal	0	0		0	0	
Non-Commercial Noise Violations	2023	2022	Change	2023	2022	Change
All GA, Charter & Other	20	3	566.7%	101	55	83.6%
TOTAL	21	3	600.0%	110	56	96.4%
Monetary Fines				2023	2022	
Airport Surcharges	\$900	\$0		\$4,100	\$400	
Consent Decree	\$0	\$0		\$0	\$0	
TOTAL	\$900	\$0		\$4,100	\$400	

AIRPORT OPERATIONS						
LGB Current Month & Calendar Year-To-Date Statistics						
September 2023						
September				Calendar Year-To-Date		
Airport Operations (FAA)	2023	2022	Change	2023	2022	Change
Air Carrier + Commuter Carriers	2,936	2,634	11.5%	24,962	23,846	4.7%
Air Taxi + General Aviation	34,562	27,917	23.8%	254,256	231,325	9.9%
Military Operations	65	82	-20.7%	732	835	-12.3%
Total Aircraft Operations	37,563	30,633	22.6%	279,950	256,006	9.4%

Notes:

0.06% (21 of 37,563) of the Airport's total aircraft operations (Commercial & GA) resulted in an aircraft noise violation.

0.03% (1 of 2,936) of the Airport's Commercial operations (Commercial & Commuter) resulted in an aircraft noise violation.

AIRCRAFT NOISE VIOLATORS

September 2023

OWNERNAME	DATE	TIME	A/D	RWY	FLIGHT #	A/C TYPE	ORIG/DEST	SEL	LIMIT	STATUS
Fly Compton Aeronautical Education Foundation	9/1/2023	4:47:51	D	30		C172		81.2	79.0	VIO
Caiman Capital LLC	9/1/2023	9:31:30	D	8L		SR22		90.2	88.0	VIO
Pardue Hines Aviation LLC	9/1/2023	17:41:54	D	8L		BE58		93.5	88.0	VIO
Monte Carlo Associates LLC	9/3/2023	0:10:06	A	30		F900		88.2	79.0	VIO
Bank of Utah Trustee	9/7/2023	1:35:19	A	30		GLF4		89.3	79.0	VIO
Phoenix Genesis Aviation LLC	9/7/2023	5:32:58	D	30		GALX		89.5	79.0	VIO
Royal Air Charter LLC	9/8/2023	0:57:22	D	30		LJ35		86.6	79.0	VIO
Delta Air Lines / SkyWest Airlines	9/11/2023	23:04:13	A	30	SKW3761	E75L	SLC	91.8	90.0	VIO
Netjets Sales Inc.	9/13/2023	5:51:21	A	30		C68A		85.3	79.0	VIO
Goodmanagement Healthcare Inc	9/14/2023	0:29:49	A	30		S22T		82.9	79.0	VIO
TVPX Aircraft Solutions Inc Trustee	9/15/2023	23:47:31	A	30		CL30		88.4	79.0	VIO
Outer Reef	9/16/2023	23:11:29	D	30		C525		88.5	79.0	VIO
Raj Consulting LLC	9/17/2023	0:14:40	A	30		C68A		81.5	79.0	VIO
Aero Jet Aviation I Inc.	9/17/2023	2:47:02	A	30		LJ45		88.3	79.0	VIO
Doc Friends	9/19/2023	18:17:44	D	30		B29		106.3	102.5	VIO
Pardue Hines Aviation LLC	9/22/2023	15:56:13	D	26R		BE58		94.2	92.0	VIO
Encore Jet Management LLC	9/23/2023	23:44:26	D	30		BE40		87.5	79.0	VIO
N759A LLC	9/24/2023	0:21:24	A	30		LJ45		88.8	79.0	VIO
Pardue Hines Aviation LLC	9/28/2023	7:37:59	D	26R		BE58		95.7	92.0	VIO
Private	9/30/2023	5:20:11	D	30		BE33		84.6	79.0	VIO
Long Beach Flying Club	9/30/2023	15:55:19	T	26L		C172		N/A	N/A	VIO

DEFINITIONS:

A/C Type — Aircraft Type
A/D — Arrival/Departure
RWY — Runway

SEL — SENEL — Single Event Noise Exposure Level (dBA)
T—Touch and Go
VIO —Violation

AIR CARRIER NOISE BUDGET PERFORMANCE

October 2022 - September 2023

RMT #	NOISE BUDGET	ACTUAL	PERCENT BUDGET USED
9	70.7	38.3	54.1%
10	84.6	64.0	75.7%

Source: Long Beach Airport Staff Calculations

DEFINITIONS:

RMT — Remote Monitoring Terminal

TOTAL NOISE BUDGET PERFORMANCE

October 2022 - September 2023

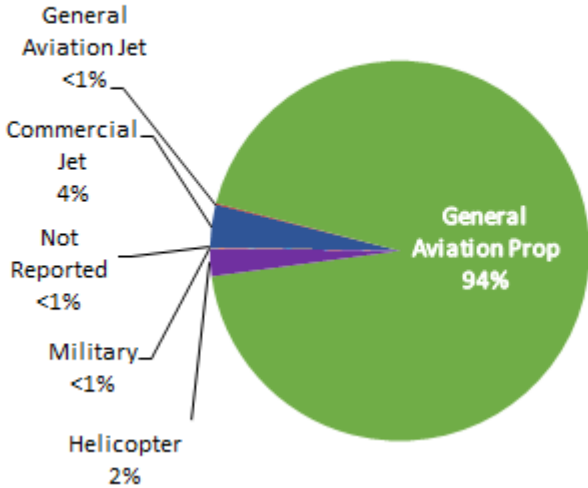
RMT #	NOISE BUDGET	ACTUAL	PERCENT BUDGET USED
9	102.7	45.6	44.4%
10	120.9	74.8	61.9%

Source: Long Beach Airport Staff Calculations

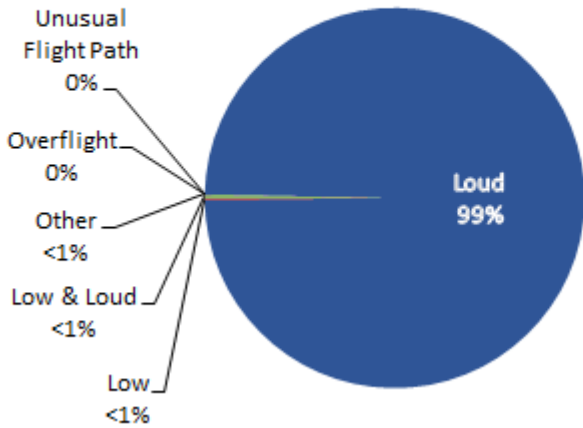
LGB AIRCRAFT NOISE COMPLAINTS

September 2023

Complaints by Aircraft Types



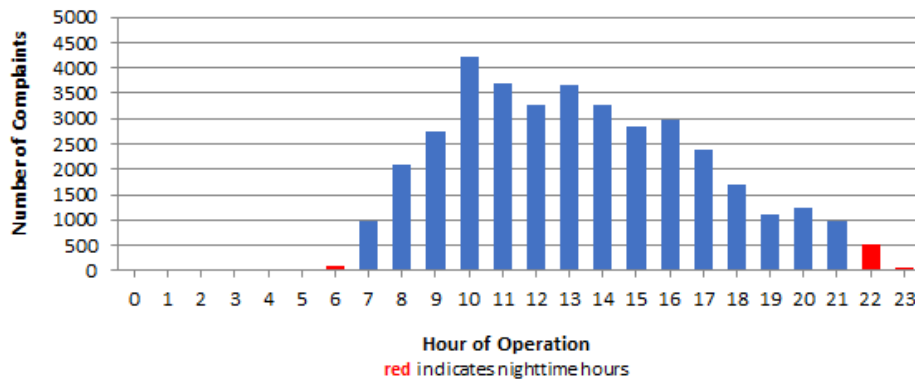
Complaints by Concern



Complaints by Zip Code

Zip Code	Complaints	Units
90242	52	1
90254	12	1
90278	181	1
90712	11	2
90740	1	1
90745	1	1
90755	2,526	4
90803	1	1
90807	30,225	112
90808	2,106	11
90815	1,450	6
90897	1	1
92626	255	1
92627	4	1
92647	758	2
92648	216	6
92649	79	4
92651	5	1
92656	1	1
92660	4	1
92661	1	1
92705	1	1
92821	1	1
Not Reported	4	3
Grand Total	37,896	165

Complaints by Time of Operation





long beach airport



Long Beach Airport

4100 E. Donald Douglas Drive, Long Beach, CA 90808

www.lgb.org • lgbapt@longbeach.gov

Administration • (562) 570-2619