

## Airport Advisory Commission

**Geetanjali Reuben**  
Chair

**Katie Larson**  
Vice Chair

**Phyllis Arias**

**Kenneth Brown**

**Wayne Chaney Sr.**

**Mark Christoffels**

**Mireya LaFarga**

**Dede Rossi**

**Randy Zarn**

## Airport Management

**Cynthia Guidry**  
Director

**Juan López-Rios**  
Deputy Airport Director

**Ken Mason**  
Executive Assistant

**Claudia Lewis**  
Manager of Administration &  
Finance

**Ron Reeves**  
Airport Operations & Facilities  
Manager

**Stephan Lum**  
Engineering Officer

**Dale Worsham**  
Development Services Officer

**Terry Ward**  
Operations Liaison Officer

**Scott Garrett**  
Facilities Management Officer

**Mony Chhey**  
Financial Services Officer

**Scott Korobkin**  
Superintendent of Safety & Security

**Kate Kuykendall**  
Public Affairs Officer

**Melissa DeAmicis**  
Administrative Officer

**Ryan McMullan**  
Noise & Environmental Affairs Officer



**long beach**  
airport



# Long Beach Airport Monthly Noise Report August 2023

**COMMERCIAL AIRCRAFT LATE NIGHT ACTIVITY**  
**LGB Current Month & Calendar Year-To-Date Statistics (10 PM- 7AM)**  
**August 2023**

August				Calendar Year-To-Date		
10PM - 11PM Activity	2023	2022	Change	2023	2022	Change
<b>Air Carrier &amp; Commuter Operations</b>	<b>2,949</b>	<b>2,659</b>	<b>10.9%</b>	<b>22,026</b>	<b>21,212</b>	<b>3.8%</b>
American/Mesa/SkyWest/Envoy	0	0		1	0	100.0%
Delta/SkyWest Airlines	2	2	0.0%	22	22	0.0%
Hawaiian Airlines	0	0		3	2	50.0%
Southwest Airlines	4	12	-66.7%	31	33	-6.1%
UPS	0	0		0	1	-100.0%
<b>Subtotal 10PM-11PM</b>	<b>6</b>	<b>14</b>	<b>-57.1%</b>	<b>57</b>	<b>58</b>	<b>-1.7%</b>
11PM- 7AM Activity	2023	2022	Change	2023	2022	Change
American/Mesa/SkyWest/Envoy	0	0		0	0	
Delta/SkyWest Airlines	1	0	100.0%	2	1	100.0%
Hawaiian Airlines	0	0		7	2	250.0%
Southwest Airlines	0	1	-100.0%	2	3	-33.3%
UPS	0	0		1	0	100.0%
<b>Subtotal 11PM-7AM</b>	<b>1</b>	<b>1</b>	<b>0.0%</b>	<b>12</b>	<b>6</b>	<b>100.0%</b>
<b>TOTAL</b>	<b>7</b>	<b>15</b>	<b>-53.3%</b>	<b>69</b>	<b>64</b>	<b>7.8%</b>

Notes:

0.2% (7 of 2,949) of total commercial operations occurred between 10pm - 7am.

0.2 flights - Nightly average for all late night (10:00 PM—7:00 AM) commercial flights, includes unanticipated delays.

0.03 flights - Nightly average for commercial flights after 11 PM.

<b>AIRPORT NOISE VIOLATIONS</b>						
<b>LGB Current Month &amp; Calendar Year-To-Date Statistics</b>						
<b>August 2023</b>						
<b>August</b>				<b>Calendar Year-To-Date</b>		
<b>Air Carrier Noise Violations</b>	<b>2023</b>	<b>2022</b>	<b>Change</b>	<b>2023</b>	<b>2022</b>	<b>Change</b>
American/Mesa/SkyWest/Envoy	0	0		0	0	
Delta/SkyWest Airlines	1	0	100.0%	2	0	200.0%
Hawaiian Airlines	0	0		5	1	400.0%
Southwest Airlines	0	0		0	0	
UPS	0	0		1	0	100.0%
<b>Subtotal</b>	<b>1</b>	<b>0</b>	<b>100.0%</b>	<b>8</b>	<b>1</b>	<b>700.0%</b>
<b>Commuter Noise Violations</b>	<b>2023</b>	<b>2022</b>	<b>Change</b>	<b>2023</b>	<b>2022</b>	<b>Change</b>
American/Mesa/SkyWest/Envoy	0	0		0	0	
Delta/SkyWest Airlines	0	0		0	0	
<b>Subtotal</b>	<b>0</b>	<b>0</b>		<b>0</b>	<b>0</b>	
<b>Non-Commercial Noise Violations</b>	<b>2023</b>	<b>2022</b>	<b>Change</b>	<b>2023</b>	<b>2022</b>	<b>Change</b>
All GA, Charter & Other	15	3	400.0%	81	52	55.8%
<b>TOTAL</b>	<b>16</b>	<b>3</b>	<b>433.3%</b>	<b>89</b>	<b>53</b>	<b>67.9%</b>
<b>Monetary Fines</b>				<b>2023</b>	<b>2022</b>	
Airport Surcharges	\$600	\$0		\$3,200	\$400	
Consent Decree	\$0	\$0		\$0	\$0	
<b>TOTAL</b>	<b>\$600</b>	<b>\$0</b>		<b>\$3,200</b>	<b>\$400</b>	

<b>AIRPORT OPERATIONS</b>						
<b>LGB Current Month &amp; Calendar Year-To-Date Statistics</b>						
<b>August 2023</b>						
<b>August</b>				<b>Calendar Year-To-Date</b>		
<b>Airport Operations (FAA)</b>	<b>2023</b>	<b>2022</b>	<b>Change</b>	<b>2023</b>	<b>2022</b>	<b>Change</b>
Air Carrier + Commuter Carriers	2,949	2,659	10.9%	22,026	21,212	3.8%
Air Taxi + General Aviation	34,137	29,367	16.2%	219,694	203,408	8.0%
Military Operations	94	92	2.2%	667	753	-11.4%
<b>Total Aircraft Operations</b>	<b>37,180</b>	<b>32,118</b>	<b>15.8%</b>	<b>242,387</b>	<b>225,373</b>	<b>7.5%</b>

Notes:

0.04% (16 of 37,086) of the Airport's total aircraft operations (Commercial & GA) resulted in an aircraft noise violation.

0.03% (0 of 2,949) of the Airport's Commercial operations (Commercial & Commuter) resulted in an aircraft noise violation.

# AIRCRAFT NOISE VIOLATORS

## August 2023

OWNERNAME	DATE	TIME	A/D	RWY	FLIGHT #	A/C TYPE	ORIG/DEST	SEL	LIMIT	STATUS
Masimo 17 LLC	8/4/2023	1:09:15	D	30		GLF5		89.6	79.0	VIO
Hawkerblue LLC	8/4/2023	23:29:59	A	30		BE20		85.6	79.0	VIO
MDO Air LLC	8/5/2023	3:59:45	D	30		GL5T		92.3	79.0	VIO
E & R Aviation Services	8/6/2023	1:21:03	D	30		C172		82.3	79.0	VIO
Inspire Equipment Leasing LLC	8/6/2023	23:34:41	A	30		CL30		87.8	79.0	VIO
Pardue Hines Aviation LLC	8/7/2023	7:05:52	D	26R		BE58		94.5	92.0	VIO
Delta Air Lines / SkyWest Airlines	8/13/2023	23:26:27	A	30	SKW3824	E75L	SLC	90.2	79.0	VIO
Trilogy Investments AG LLC	8/13/2023	23:51:39	A	30		FA50		93.8	79.0	VIO
Zephyr Services LLC	8/20/2023	0:17:44	A	30		B350		85.1	79.0	VIO
TXPX Aircraft Solutions Inc Trustee	8/20/2023	2:10:12	A	30		GLF6		88.3	79.0	VIO
Have Blue Aviation LLC	8/22/2023	0:52:35	A	30		M20P		83.6	79.0	VIO
Unique Educational Experiences	8/22/2023	23:52:26	T	30		C152		N/A	N/A	VIO
SN 0048 LLC	8/26/2023	1:40:05	A	30		T206		83.4	79.0	VIO
Terrible Herbst Inc.	8/26/2023	23:38:26	A	30		GLF4		88.7	79.0	VIO
Dalmore Estates LLC	8/29/2023	17:45:09	A	26R		BE58		91.6	88.0	VIO
Private	8/30/2023	15:40:03	D	26R		PA34		94.6	92.0	VIO

**DEFINITIONS:**

**A/C Type** — Aircraft Type

**A/D** — Arrival/Departure

**RWY** — Runway

**SEL** — SENEL — Single Event Noise Exposure Level (dBA)

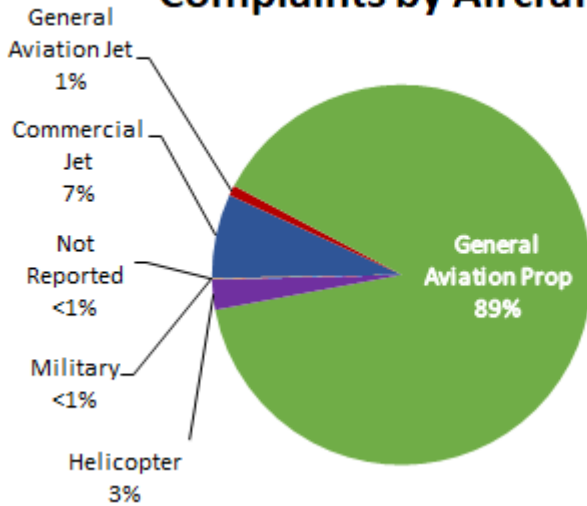
**T** — Touch and Go

**VIO** — Violation

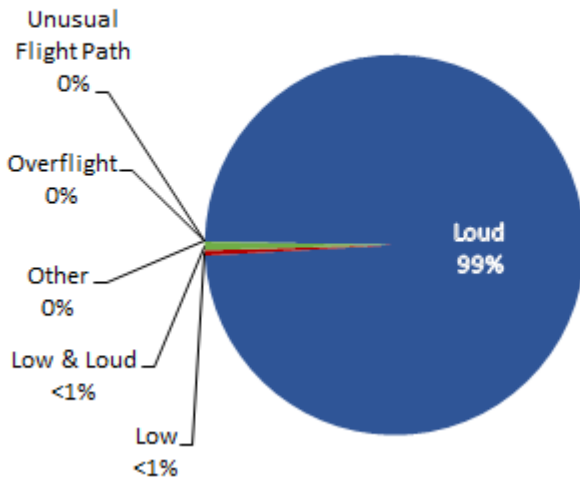
# LGB AIRCRAFT NOISE COMPLAINTS

## August 2023

### Complaints by Aircraft Types



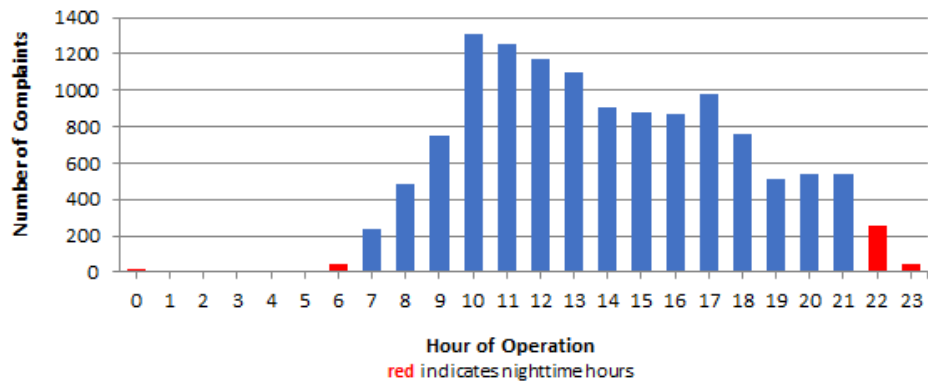
### Complaints by Concern



### Complaints by Zip Code

Zip Code	Complaints	Units
90242	33	1
90254	11	1
90277	1	1
90278	112	1
90720	1	1
90740	5	3
90746	10	2
90755	859	2
90807	9,567	67
90808	253	10
90814	1	1
90815	760	4
92626	226	1
92627	1	1
92647	645	1
92648	102	5
92649	56	3
92651	7	1
92656	2	1
92661	2	1
92676	2	1
92692	1	1
Not Reported	10	6
<b>Grand Total</b>	<b>12,667</b>	<b>116</b>

### Complaints by Time of Operation





# long beach airport



## Long Beach Airport

4100 E. Donald Douglas Drive, Long Beach, CA 90808

[www.lgb.org](http://www.lgb.org) • [lgbapt@longbeach.gov](mailto:lgbapt@longbeach.gov)

Administration • (562) 570-2619