

Airport Advisory Commission

Katie Larson
Chair

Robert L. Allarte
Vice Chair

Kenneth Brown

Wayne Chaney Sr.

Mireya LaFarga

Miles Nevin

Geetanjali Reuben

Dede Rossi

Airport Management

Cynthia Guidry
Director

Juan López-Rios
Deputy Airport Director

Ken Mason
Executive Assistant

Claudia Lewis
Manager of Administration
& Finance

Ron Reeves
Airport Operations & Facilities
Manager

Stephan Lum
Engineering Officer

Dale Worsham
Development Services Officer

Karl Zittel
Airside Operations Officer

Matthew Brookes
Airport Properties Officer

Scott Garrett
Facilities Management Officer

Mony Chhey
Financial Services Officer

Scott Korobkin
Superintendent of Safety and
Security

Kate Kuykendall
Public Affairs Officer

Ryan McMullan
Noise & Environmental Affairs
Officer



long beach
airport



Long Beach Airport Monthly Noise Report October 2022

COMMERCIAL AIRCRAFT LATE NIGHT ACTIVITY
LGB Current Month & Calendar Year-To-Date Statistics (10 PM- 7AM)
October 2022

October				Calendar Year-To-Date		
10PM - 11PM Activity	2022	2021	Change	2022	2021	Change
Air Carrier & Commuter Operations	2,710	2,434	11.3%	26,556	19,668	35.0%
American/Mesa/SkyWest/Envoy	0	0		0	2	-100.0%
Delta/SkyWest Airlines	1	1	0.0%	23	12	91.7%
Hawaiian Airlines	1	0	100.0%	3	3	0.0%
Southwest Airlines	3	1	200.0%	38	33	15.2%
UPS	0	0		1	1	0.0%
Subtotal 10PM-11PM	5	2	150.0%	65	51	27.5%
11PM- 7AM Activity	2022	2021	Change	2022	2021	Change
American/Mesa/SkyWest/Envoy	0	0		0	0	
Delta/SkyWest Airlines	1	2	-50.0%	2	2	0.0%
Hawaiian Airlines	2	0	100.0%	4	0	100.0%
Southwest Airlines	0	0	100.0%	3	2	50.0%
UPS	0	0		0	1	-100.0%
Subtotal 11PM-7AM	3	2	50.0%	9	5	80.0%
TOTAL	8	4	100.0%	74	56	32.1%

Notes:

0.3% (8 of 2,710) of total commercial operations occurred between 10pm - 7am.

0.3 flights - Nightly average for all late night (10:00 PM—7:00 AM) commercial flights, includes unanticipated delays.

0.1 flights - Nightly average for commercial flights after 11 PM.

AIRPORT NOISE VIOLATIONS						
LGB Current Month & Calendar Year-To-Date Statistics						
October 2022						
October				Calendar Year-To-Date		
Air Carrier Noise Violations	2022	2021	Change	2022	2021	Change
American/Mesa/SkyWest/Envoy	0	0		0	0	
Delta/SkyWest Airlines	2	2	0.0%	2	2	0.0%
Hawaiian Airlines	2	0	100.0%	3	0	100.0%
Southwest Airlines	0	0		0	1	-100.0%
UPS	0	0		0	1	-100.0%
Subtotal	4	2	100.0%	5	4	25.0%
Commuter Noise Violations	2022	2021	Change	2022	2021	Change
American/Mesa/SkyWest/Envoy	0	0		0	0	
Delta/SkyWest Airlines	0	0		0	0	
Subtotal	0	0		0	0	
Non-Commercial Noise Violations	2022	2021	Change	2022	2021	Change
All GA, Charter & Other	6	11	-45.5%	61	120	-49.2%
TOTAL	10	13	-23.1%	66	124	-46.8%
Monetary Fines	2022	2021		2022	2021	
Airport Surcharges	\$1,200	\$800		\$1,600	\$4,100	
Consent Decree	\$0	\$0		\$0	\$0	
TOTAL	\$1,200	\$800		\$1,600	\$4,100	

AIRPORT OPERATIONS						
LGB Current Month & Calendar Year-To-Date Statistics						
October 2022						
October				Calendar Year-To-Date		
Airport Operations (FAA)	2022	2021	Change	2022	2021	Change
Air Carrier + Commuter Carriers	2,710	2,434	11.3%	26,556	19,668	35.0%
Air Taxi + General Aviation	24,725	29,657	-16.6%	256,050	272,982	-6.2%
Military Operations	68	142	-52.1%	903	1,082	-16.5%
Total Aircraft Operations	27,503	32,233	-14.7%	283,509	293,732	-3.5%

Notes:

0.04% (10 of 27,503) of the Airport's total aircraft operations (Commercial & GA) resulted in an aircraft noise violation.

0.1% (4 of 2,710) of the Airport's Commercial operations (Commercial & Commuter) resulted in an aircraft noise violation.

AIRCRAFT NOISE VIOLATORS

October 2022

OWNERNAME	DATE	TIME	A/D	RWY	FLIGHT #	A/C TYPE	ORIG/DEST	SEL	LIMIT	STATUS
Lion Aviation LLC	10/1/2022	1:03:29	A	30		GLF4		86.8	79.0	VIO
Private	10/7/2022	6:02:27	D	26L		C172		n/a	n/a	VIO
Hawaiian Airlines	10/7/2022	6:20:53	A	30	HAL72	A21N	OGG	92.3	90.0	VIO
Delta Air Lines / SkyWest Airlines	10/9/2022	22:30:33	A	30	SKW3892	E75L	SLC	92.3	90.0	VIO
Hawaiian Airlines	10/13/2022	23:44:55	A	30	HAL72	A21N	OGG	93.4	90.0	VIO
Falcon 105 LLC	10/16/2022	2:40:39	A	30		FA50		92.4	90.0	VIO
A & E Flying Club of Los Angeles Inc.	10/16/2022	15:18:48	T	26R		C172		n/a	n/a	VIO
CFG Air LLC	10/22/2022	5:53:11	D	30		GLF4		87.3	79.0	VIO
Delta Air Lines / SkyWest Airlines	10/22/2022	23:30:34	A	30	SKW3892	E75L	SLC	92.0	79.0	VIO
MEI MEI AZ LLC	10/28/2022	23:28:54	A	30		C25B		88.8	79.0	VIO

DEFINITIONS:

A/C Type — Aircraft Type

A/D — Arrival/Departure

RWY — Runway

SEL — SENEL — Single Event Noise Exposure Level (dBA)

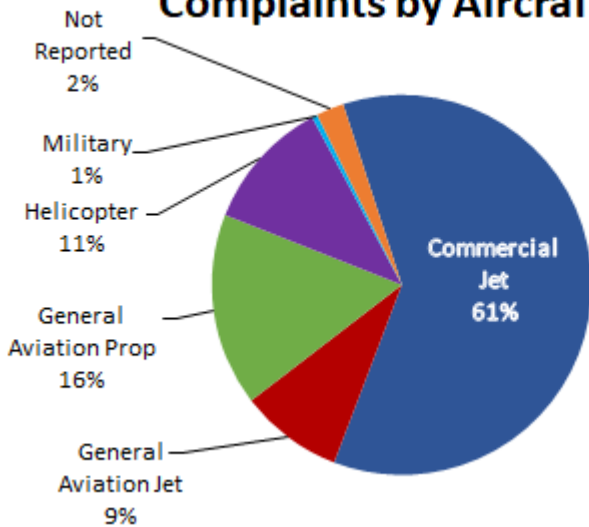
T—Touch and Go Operation

VIO —Violation

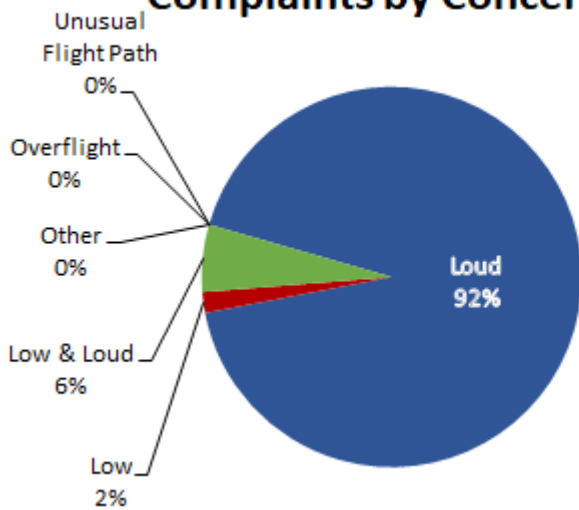
LGB AIRCRAFT NOISE COMPLAINTS

October 2022

Complaints by Aircraft Types



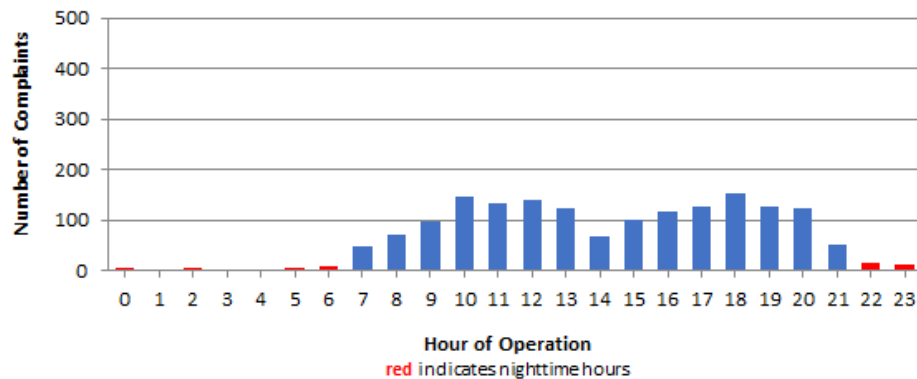
Complaints by Concern



Complaints by Zip Code

Zip Code	Complaints	Units
90242	38	1
90254	16	1
90278	97	1
90740	2	1
90755	3	2
90803	1	1
90805	3	3
90806	1	1
90807	106	53
90808	33	22
90815	4	3
91364	2	1
92626	383	1
92627	3	1
92629	6	1
92646	3	1
92647	845	3
92648	51	5
92649	66	3
92651	6	1
92676	1	1
92677	14	1
Not Reported	15	14
Grand Total	1,699	122

Complaints by Time of Operation





long beach airport



Long Beach Airport

4100 E. Donald Douglas Drive, Long Beach, CA 90808

www.lgb.org • lgbapt@longbeach.gov

Administration • (562) 570-2619