

Airport Advisory Commission

Katie Larson
Chair

Robert L. Allarte
Vice Chair

Kenneth Brown

Wayne Chaney Sr.

Mireya LaFarga

Miles Nevin

Geetanjali Reuben

Dede Rossi

Airport Management

Cynthia Guidry
Director

Juan López-Rios
Deputy Airport Director

Ken Mason
Executive Assistant

Claudia Lewis
Manager of Administration
& Finance

Ron Reeves
Airport Operations & Facilities
Manager

Stephan Lum
Engineering Officer

Dale Worsham
Development Services Officer

Karl Zittel
Airside Operations Officer

Matthew Brookes
Airport Properties Officer

Scott Garrett
Facilities Management Officer

Mony Chhey
Financial Services Officer

Scott Korobkin
Superintendent of Safety and
Security

Kate Kuykendall
Public Affairs Officer

Ryan McMullan
Noise & Environmental Affairs
Officer



long beach
airport



Long Beach Airport Monthly Noise Report November 2022

COMMERCIAL AIRCRAFT LATE NIGHT ACTIVITY
LGB Current Month & Calendar Year-To-Date Statistics (10 PM- 7AM)
November 2022

November				Calendar Year-To-Date		
10PM - 11PM Activity	2022	2021	Change	2022	2021	Change
Air Carrier & Commuter Operations	2,739	2,723	0.6%	29,295	22,391	30.8%
American/Mesa/SkyWest/Envoy	0	0		0	2	-100.0%
Delta/SkyWest Airlines	4	1	300.0%	27	13	107.7%
Hawaiian Airlines	0	0		3	3	0.0%
Southwest Airlines	2	1	100.0%	40	34	17.6%
UPS	0	0		1	1	0.0%
Subtotal 10PM-11PM	6	2	200.0%	71	53	34.0%
11PM- 7AM Activity	2022	2021	Change	2022	2021	Change
American/Mesa/SkyWest/Envoy	0	3	-100.0%	0	3	-100.0%
Delta/SkyWest Airlines	0	0		2	2	0.0%
Hawaiian Airlines	0	0		4	0	100.0%
Southwest Airlines	0	0		3	2	50.0%
UPS	0	0		0	1	-100.0%
Subtotal 11PM-7AM	0	3	-100.0%	9	8	12.5%
TOTAL	6	5	20.0%	80	61	31.1%

Notes:

0.2% (6 of 2,739) of total commercial operations occurred between 10pm - 7am.

0.2flights - Nightly average for all late night (10:00 PM—7:00 AM) commercial flights, includes unanticipated delays.

0.0 flights - Nightly average for commercial flights after 11 PM.

AIRPORT NOISE VIOLATIONS
LGB Current Month & Calendar Year-To-Date Statistics
November 2022

November				Calendar Year-To-Date					
Air Carrier Noise Violations				2022	2021	Change	2022	2021	Change
American/Mesa/SkyWest/Envoy	0	0		0	0		0	0	
Delta/SkyWest Airlines	0	0		2	2	0.0%	2	2	0.0%
Hawaiian Airlines	0	0		3	0	100.0%	3	0	100.0%
Southwest Airlines	0	0		0	1	-100.0%	0	1	-100.0%
UPS	0	0		0	1	-100.0%	0	1	-100.0%
Subtotal	0	0	0.0%	5	4	25.0%	5	4	25.0%
Commuter Noise Violations				2022	2021	Change	2022	2021	Change
American/Mesa/SkyWest/Envoy	0	0		0	0		0	0	
Delta/SkyWest Airlines	0	0		0	0		0	0	
Subtotal	0	0		0	0		0	0	
Non-Commercial Noise Violations				2022	2021	Change	2022	2021	Change
All GA, Charter & Other	2	13	-84.6%	63	133	-52.6%	63	133	-52.6%
TOTAL	2	13	-84.6%	68	137	-50.4%	68	137	-50.4%
Monetary Fines				2022	2021		2022	2021	
Airport Surcharges	\$0	\$700		\$1,600	\$4,800		\$1,600	\$4,800	
Consent Decree	\$0	\$0		\$0	\$0		\$0	\$0	
TOTAL	\$0	\$700		\$1,600	\$4,800		\$1,600	\$4,800	

AIRPORT OPERATIONS
LGB Current Month & Calendar Year-To-Date Statistics
November 2022

November				Calendar Year-To-Date					
Airport Operations (FAA)				2022	2021	Change	2022	2021	Change
Air Carrier + Commuter Carriers	2,739	2,723	0.6%	29,295	22,391	30.8%	29,295	22,391	30.8%
Air Taxi + General Aviation	21,865	27,161	-19.5%	277,915	300,143	-7.4%	277,915	300,143	-7.4%
Military Operations	83	117	-29.1%	986	1,199	-17.8%	986	1,199	-17.8%
Total Aircraft Operations	24,687	30,001	-17.7%	308,196	323,733	-4.8%	308,196	323,733	-4.8%

Notes:

0.01% (2 of 24,604) of the Airport's total aircraft operations (Commercial & GA) resulted in an aircraft noise violation.
0.0% (0 of 2,739) of the Airport's Commercial operations (Commercial & Commuter) resulted in an aircraft noise violation.

AIRCRAFT NOISE VIOLATORS

November 2022

OWNERNAME	DATE	TIME	A/D	RWY	FLIGHT #	A/C TYPE	ORIG/DEST	SEL	LIMIT	STATUS
Private	11/5/2022	18:00:08	T	26R		C152		n/a	n/a	VIO
Island Express Holding Corp	11/5/2022	23:01:51	A	30		S76		97.1	79.0	VIO

DEFINITIONS:

A/C Type — Aircraft Type

A/D — Arrival/Departure

RWY — Runway

SEL — SENEL — Single Event Noise Exposure Level (dBA)

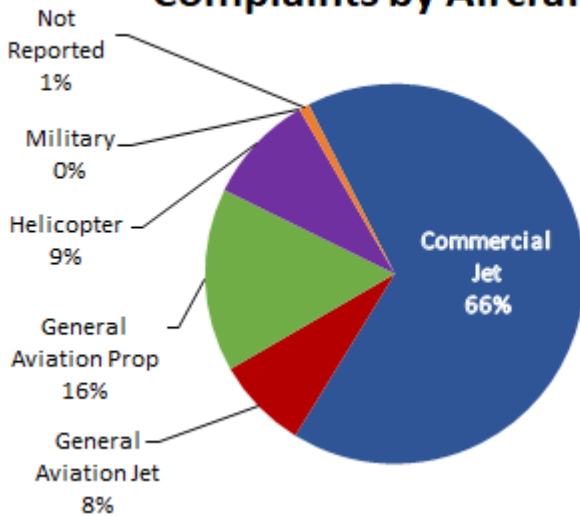
T—Touch and Go Operation

VIO—Violation

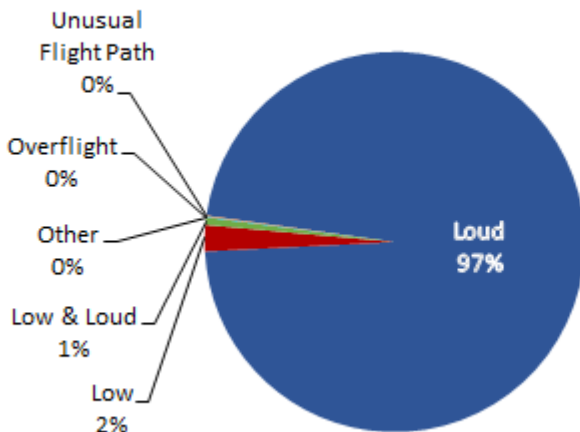
LGB AIRCRAFT NOISE COMPLAINTS

November 2022

Complaints by Aircraft Types



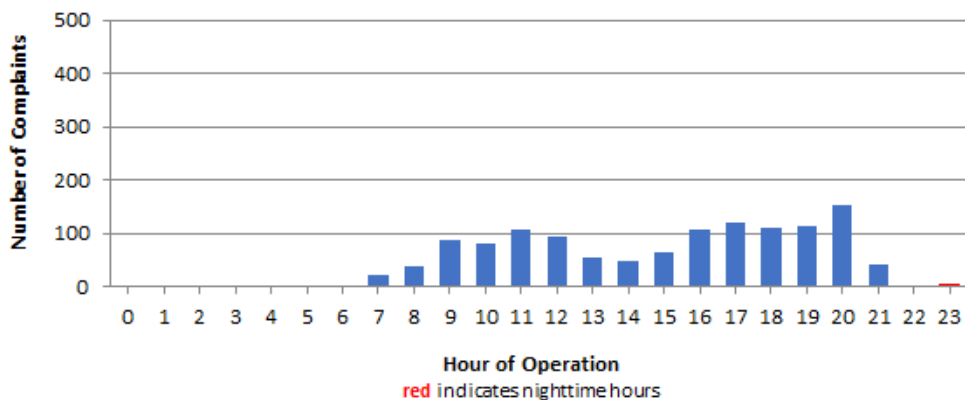
Complaints by Concern



Complaints by Zip Code

Zip Code	Complaints	Units
90242	31	1
90254	3	1
90278	14	1
90807	17	5
90808	13	5
91364	2	1
92626	298	1
92627	1	1
92646	1	1
92647	794	1
92648	39	6
92649	23	3
92651	4	1
92656	3	1
92660	3	1
92661	2	1
92677	10	1
92683	1	1
Not Reported	2	2
Grand Total	1,261	35

Complaints by Time of Operation





long beach airport



Long Beach Airport

4100 E. Donald Douglas Drive, Long Beach, CA 90808

www.lgb.org • lgbapt@longbeach.gov

Administration • (562) 570-2619