

## Airport Advisory Commission

**Miles Nevin**  
Chair

**Katie Larson**  
Vice Chair

**Jeffrey Anderson**

**Christine Bos**

**Wayne Chaney Sr.**

**Robert L. Duarte Jr.**

**Mireya LaFarga**

**Geetanjali Reuben**

**Dede Rossi**

## Airport Management

**Cynthia Guidry**  
Director

**Juan López-Ríos**  
Deputy Airport Director

**Ken Mason**  
Executive Assistant

**Claudia Lewis**  
Manager of Administration  
& Finance

**Ron Reeves**  
Airport Operations & Facilities  
Manager

**Ambi Thurai**  
Engineering Officer

**Dale Worsham**  
Administrative Officer

**Karl Zittel**  
Airside Operations Officer

**Matthew Brookes**  
Airport Properties Officer

**Scott Garrett**  
Facilities Management Officer

**Mony Chhey**  
Financial Services Officer

**Scott Korobkin**  
Superintendent of Safety and  
Security

**Kate Kuykendall**  
Public Affairs Officer

**Ryan McMullan**  
Noise & Environmental Affairs  
Officer



# Long Beach Airport Monthly Noise Report October 2021

**COMMERCIAL AIRCRAFT LATE NIGHT ACTIVITY**  
**LGB Current Month & Calendar Year-To-Date Statistics (10 PM- 7AM)**  
**October 2021**

October				Calendar Year-To-Date		
10PM - 11PM Activity	2021	2020	Change	2021	2020	Change
<b>Air Carrier &amp; Commuter Operations</b>	<b>2,434</b>	<b>1,160</b>	<b>109.8%</b>	<b>19,668</b>	<b>14,632</b>	<b>34.4%</b>
American/Mesa/SkyWest/Envoy	0	0		2	0	100.0%
Delta/SkyWest Airlines	1	1	0.0%	12	9	33.3%
FedEx	0	0		0	0	
Hawaiian Airlines	0	0		3	1	200.0%
JetBlue Airways	0	0		0	22	-100.0%
Southwest Airlines	1	0	100.0%	33	0	100.0%
UPS	0	0		1	0	100.0%
<b>Subtotal 10PM-11PM</b>	<b>2</b>	<b>1</b>	<b>100.0%</b>	<b>51</b>	<b>32</b>	<b>59.4%</b>
<b>11PM- 7AM Activity</b>	<b>2021</b>	<b>2020</b>	<b>Change</b>	<b>2021</b>	<b>2020</b>	<b>Change</b>
American/Mesa/SkyWest/Envoy	0	0		0	0	
Delta/SkyWest Airlines	2	0	100.0%	2	0	100.0%
FedEx	0	0		0	0	
Hawaiian Airlines	0	0		0	2	-100.0%
JetBlue Airways	0	0		0	18	-100.0%
Southwest Airlines	0	0		2	0	100.0%
UPS	0	0		1	0	100.0%
<b>Subtotal 11PM-7AM</b>	<b>2</b>	<b>0</b>	<b>100.0%</b>	<b>5</b>	<b>20</b>	<b>-75.0%</b>
<b>TOTAL</b>	<b>4</b>	<b>1</b>	<b>300.0%</b>	<b>56</b>	<b>52</b>	<b>7.7%</b>

Notes:

0.2% (4 of 2,434) of total commercial operations occurred between 10pm - 7am.

0.1 flights - Nightly average for all late night (10:00 PM—7:00 AM) commercial flights, includes unanticipated delays.

0.1 flights - Nightly average for commercial flights after 11 PM.

<b>AIRPORT NOISE VIOLATIONS</b>						
<b>LGB Current Month &amp; Calendar Year-To-Date Statistics</b>						
<b>October 2021</b>						
<b>October</b>				<b>Calendar Year-To-Date</b>		
<b>Air Carrier Noise Violations</b>	<b>2021</b>	<b>2020</b>	<b>Change</b>	<b>2021</b>	<b>2020</b>	<b>Change</b>
American/Mesa/SkyWest/Envoy	0	0		0	0	
Delta/SkyWest Airlines	2	0	100.0%	2	1	100.0%
FedEx	0	0		0	0	
Hawaiian Airlines	0	0		0	2	-100.0%
JetBlue Airways	0	0		0	16	-100.0%
Southwest Airlines	0	0		1	0	100.0%
UPS	0	0		1	0	100.0%
<b>Subtotal</b>	<b>2</b>	<b>0</b>	<b>100.0%</b>	<b>4</b>	<b>19</b>	<b>-78.9%</b>
<b>Commuter Noise Violations</b>	<b>2021</b>	<b>2020</b>	<b>Change</b>	<b>2021</b>	<b>2020</b>	<b>Change</b>
American/Mesa/SkyWest/Envoy	0	0		0	0	
Delta/SkyWest Airlines	0	0		0	0	
<b>Subtotal</b>	<b>0</b>	<b>0</b>		<b>0</b>	<b>0</b>	
<b>Non-Commercial Noise Violations</b>	<b>2021</b>	<b>2020</b>	<b>Change</b>	<b>2021</b>	<b>2020</b>	<b>Change</b>
All GA, Charter & Other	11	17	-35.3%	120	98	22.4%
<b>TOTAL</b>	<b>13</b>	<b>17</b>	<b>-23.5%</b>	<b>124</b>	<b>117</b>	<b>6.0%</b>
<b>Monetary Fines</b>	<b>2021</b>	<b>2020</b>		<b>2021</b>	<b>2020</b>	
Airport Surcharges	\$800	\$700		\$4,100	\$8,400	
Consent Decree	\$0	\$0		\$0	\$78,000	
<b>TOTAL</b>	<b>\$800</b>	<b>\$700</b>		<b>\$4,100</b>	<b>\$86,400</b>	

<b>AIRPORT OPERATIONS</b>						
<b>LGB Current Month &amp; Calendar Year-To-Date Statistics</b>						
<b>October 2021</b>						
<b>October</b>				<b>Calendar Year-To-Date</b>		
<b>Airport Operations (FAA)</b>	<b>2021</b>	<b>2020</b>	<b>Change</b>	<b>2021</b>	<b>2020</b>	<b>Change</b>
Air Carrier + Commuter Carriers	2,434	1,160	109.8%	19,668	14,632	34.4%
Air Taxi + General Aviation	29,657	24,119	23.0%	272,982	223,148	22.3%
Military Operations	142	83	71.1%	1,082	1,044	3.6%
<b>Total Aircraft Operations</b>	<b>32,233</b>	<b>25,362</b>	<b>27.1%</b>	<b>293,732</b>	<b>238,824</b>	<b>23.0%</b>

Notes:

0.04% (13 of 32,233) of the Airport's total aircraft operations (Commercial & GA) resulted in an aircraft noise violation.  
0.1% (2 of 2,434) of the Airport's Commercial operations (Commercial & Commuter) resulted in an aircraft noise violation.

# AIRCRAFT NOISE VIOLATORS

## October 2021

OWNERNAME	DATE	TIME	A/D	RWY	FLIGHT #	A/C TYPE	ORIG/DEST	SEL	LIMIT	STATUS
GJC Funding XIII LLC	10/1/2021	0:01:10	A	30		GLF5		87.1	79.0	VIO
Falcon Executive Aviation Inc.	10/1/2021	4:54:43	D	30		C560		92.6	79.0	VIO
Private	10/1/2021	8:38:08	D	26R		P18		94.5	92.0	VIO
VCS Encore Inc.	10/2/2021	23:33:26	A	30		C560		86.9	79.0	VIO
SK Telecom	10/3/2021	22:10:03	D	30		G650		92.1	90.0	VIO
A & E Hawker LP	10/5/2021	5:22:38	A	30		BE40		86.5	79.0	VIO
Delta Air Lines / SkyWest Airlines	10/11/2021	23:04:35	A	30	SKW3892	E75L	SLC	92.8	79.0	VIO
Core Transport LLC	10/12/2021	23:15:27	D	30		C68A		84.2	79.0	VIO
Delta Air Lines / SkyWest Airlines	10/12/2021	23:42:21	A	30	SKW3892	E75L	SLC	92.2	79.0	VIO
AVIATION8 LLC	10/14/2021	23:40:13	A	30		F900		87.1	79.0	VIO
Career Aviation Co. Inc.	10/25/2021	20:13:19	D	30		B722		107.5	102.5	VIO
TS Aviation LLC	10/26/2021	23:30:57	A	30		GLF3		96.5	79.0	VIO
Delta Air Lines / SkyWest Airlines*	10/29/2021	22:17:45	A	30		B752		93.5	90.0	VIO

**DEFINITIONS:**

**A/C Type** — Aircraft Type

**A/D** — Arrival/Departure

**RWY** — Runway

**\*note:** Charter operation

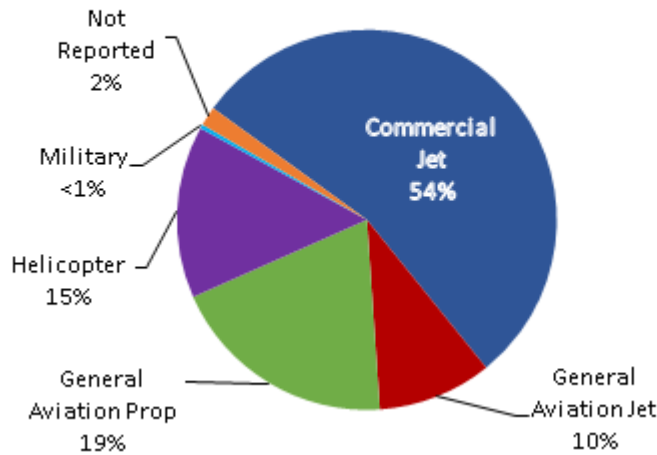
**SEL** — SENEL — Single Event Noise Exposure Level (dBA)

**VIO** — Violation

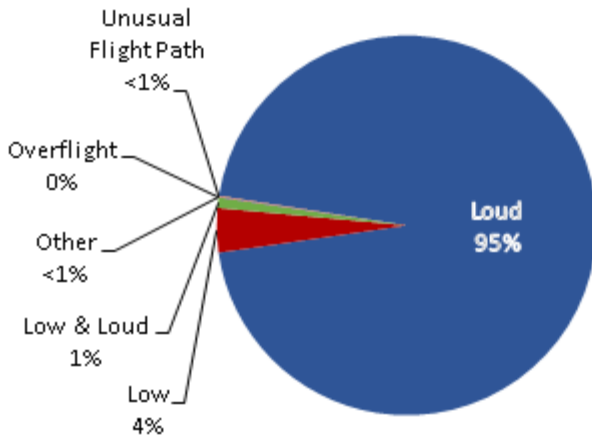
# LGB AIRCRAFT NOISE COMPLAINTS

October 2021

## Complaints by Aircraft Types



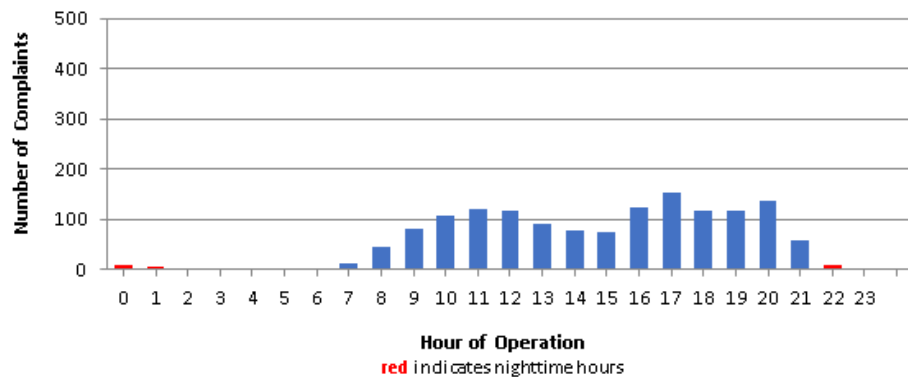
## Complaints by Concern



## Complaints by Zip Code

Zip Code	Complaints	Units
90242	2	1
90254	2	2
90277	1	1
90278	95	1
90731	2	1
90746	7	1
90803	1	1
90805	9	1
90807	44	15
90808	2	1
90815	4	4
92037	1	1
92612	24	1
92626	469	1
92627	5	1
92647	671	2
92648	100	8
92649	4	2
92651	1	1
92660	4	1
92661	5	1
92676	2	1
92677	1	1
Not Reported	4	4
<b>Grand Total</b>	<b>1,460</b>	<b>54</b>

## Complaints by Time of Operation





# long beach airport



## Long Beach Airport

4100 E. Donald Douglas Drive, Long Beach, CA 90808

[www.lgb.org](http://www.lgb.org) • [lgbapt@longbeach.gov](mailto:lgbapt@longbeach.gov)

Administration • (562) 570-2619