

Airport Advisory Commission

Miles Nevin
Chair

Katie Larson
Vice Chair

Jeffrey Anderson

Christine Bos

Wayne Chaney Sr.

Robert L. Duarte Jr.

Geetanjali Reuben



long beach
airport



Airport Management

Cynthia Guidry
Director

Juan López-Ríos
Deputy Airport Director

Ken Mason
Executive Assistant

Claudia Lewis
Manager of Administration
& Finance

Ron Reeves
Airport Operations & Facilities
Manager

Ambi Thurai
Engineering Officer

Dale Worsham
Administrative Officer

Karl Zittel
Airsides Operations Officer

Matthew Brookes
Airport Properties Officer

Scott Garrett
Facilities Management Officer

Mony Chhey
Financial Services Officer

Scott Korobkin
Superintendent of Safety and
Security

Kate Kuykendall
Public Affairs Officer

Ryan McMullan
Noise & Environmental Affairs
Officer



Long Beach Airport Monthly Noise Report August 2021

| AIRPORT NOISE VIOLATIONS | | | | | | |
|---|--------------|--------------|---------------|------------------------------|-----------------|---------------|
| LGB Current Month & Calendar Year-To-Date Statistics | | | | | | |
| August 2021 | | | | | | |
| August | | | | Calendar Year-To-Date | | |
| Air Carrier Noise Violations | 2021 | 2020 | Change | 2021 | 2020 | Change |
| American/Mesa/SkyWest/Envoy | 0 | 0 | | 0 | 0 | |
| Delta/SkyWest Airlines | 0 | 0 | | 0 | 1 | -100.0% |
| FedEx | 0 | 0 | | 0 | 0 | |
| Hawaiian Airlines | 0 | 0 | | 0 | 2 | -100.0% |
| JetBlue Airways | 0 | 0 | | 0 | 16 | -100.0% |
| Southwest Airlines | 0 | 0 | | 1 | 0 | 100.0% |
| UPS | 0 | 0 | | 1 | 0 | 100.0% |
| Subtotal | 0 | 0 | | 2 | 19 | -89.5% |
| Commuter Noise Violations | 2021 | 2020 | Change | 2021 | 2020 | Change |
| American/Mesa/SkyWest/Envoy | 0 | 0 | | 0 | 0 | |
| Delta/SkyWest Airlines | 0 | 0 | | 0 | 0 | |
| Subtotal | 0 | 0 | | 0 | 0 | |
| Non-Commercial Noise Violations | 2021 | 2020 | Change | 2021 | 2020 | Change |
| All GA, Charter & Other | 9 | 16 | -43.8% | 98 | 70 | 40.0% |
| TOTAL | 9 | 16 | -43.8% | 100 | 89 | 12.4% |
| Monetary Fines | 2021 | 2020 | | 2021 | 2020 | |
| Airport Surcharges | \$400 | \$800 | | \$2,700 | \$7,600 | |
| Consent Decree | \$0 | \$0 | | \$0 | \$78,000 | |
| TOTAL | \$400 | \$800 | | \$2,700 | \$85,600 | |

| AIRPORT OPERATIONS | | | | | | |
|---|---------------|---------------|---------------|------------------------------|----------------|---------------|
| LGB Current Month & Calendar Year-To-Date Statistics | | | | | | |
| August 2021 | | | | | | |
| August | | | | Calendar Year-To-Date | | |
| Airport Operations (FAA) | 2021 | 2020 | Change | 2021 | 2020 | Change |
| Air Carrier + Commuter Carriers | 2,172 | 997 | 117.9% | 15,113 | 12,369 | 22.2% |
| Air Taxi + General Aviation | 29,792 | 28,593 | 4.2% | 217,423 | 173,635 | 25.2% |
| Military Operations | 124 | 124 | 0.0% | 840 | 872 | -3.7% |
| Total Aircraft Operations | 32,088 | 29,714 | 8.0% | 233,376 | 186,876 | 24.9% |

Notes:

0.03% (9 of 31,964) of the Airport's total aircraft operations (Commercial & GA) resulted in an aircraft noise violation.
0.00% (0 of 2,172) of the Airport's Commercial operations (Commercial & Commuter) resulted in an aircraft noise violation.

AIRCRAFT NOISE VIOLATORS

August 2021

| OWNERNAME | DATE | TIME | A/D | RWY | FLIGHT # | A/C TYPE | ORIG/DEST | SEL | LIMIT | STATUS |
|-----------------------------|-----------|----------|-----|-----|----------|----------|-----------|------|-------|--------|
| Private | 8/3/2021 | 21:13:20 | D | 26R | | C414 | | 94.4 | 92.0 | VIO |
| Go Vector One LLC | 8/4/2021 | 3:52:40 | D | 30 | | SF50 | | 84.8 | 79.0 | VIO |
| OCR Aviation | 8/5/2021 | 23:34:26 | A | 30 | | BE9T | | 83.3 | 79.0 | VIO |
| SF1 Holdings LLC | 8/6/2021 | 23:10:31 | D | 30 | | F2TH | | 85.2 | 79.0 | VIO |
| Zero Seven Whiskey LLC | 8/11/2021 | 23:17:40 | D | 30 | | PA32 | | 81.4 | 79.0 | VIO |
| Masimo 17 LLC | 8/12/2021 | 2:31:03 | A | 30 | | GLF5 | | 86.2 | 79.0 | VIO |
| Private | 8/12/2021 | 19:51:43 | M | 30 | | P28A | | n/a | n/a | VIO |
| Swift Air LLC/iAero Airways | 8/14/2021 | 0:45:56 | A | 30 | | B733 | | 96.5 | 79.0 | VIO |
| West Coast Charters LLC | 8/19/2021 | 23:28:38 | A | 30 | | B350 | | 85.6 | 79.0 | VIO |

DEFINITIONS:

A/C Type — Aircraft Type

A/D — Arrival/Departure

M—Missed Approach

RWY — Runway

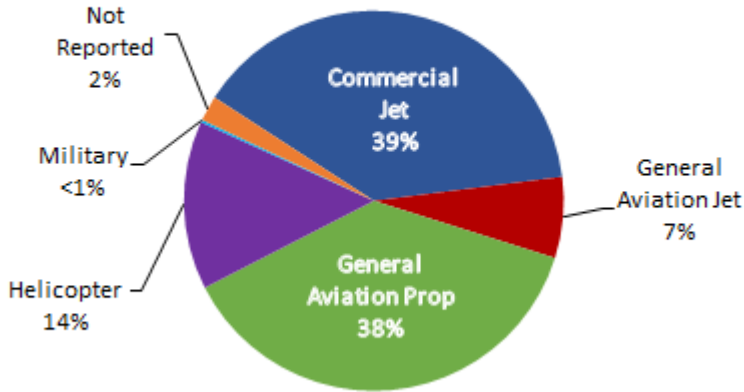
SEL — SENEL — Single Event Noise Exposure Level (dBA)

VIO — Violation

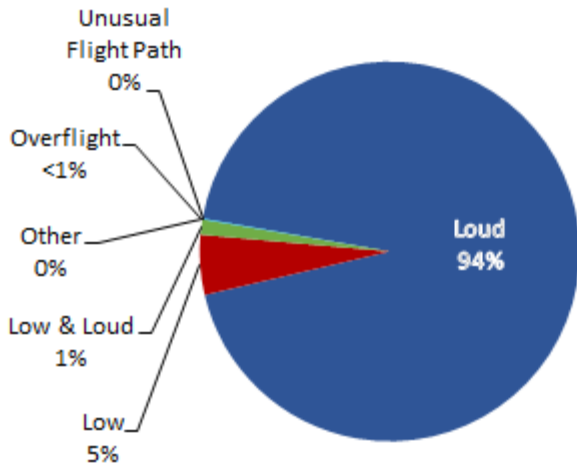
LGB AIRCRAFT NOISE COMPLAINTS

August 2021

Complaints by Aircraft Types



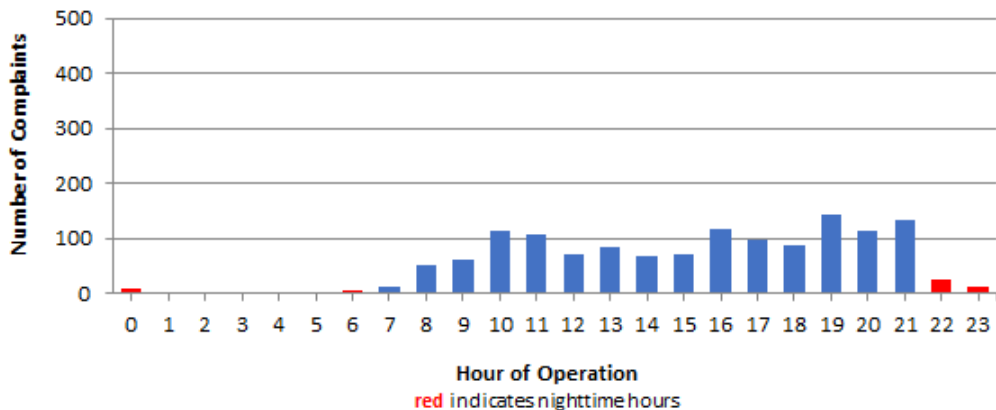
Complaints by Concern



Complaints by Zip Code

| Zip Code | Complaints | Units |
|--------------------|--------------|-----------|
| 90242 | 3 | 1 |
| 90254 | 1 | 1 |
| 90278 | 64 | 1 |
| 90501 | 1 | 1 |
| 90505 | 1 | 1 |
| 90713 | 1 | 1 |
| 90740 | 2 | 2 |
| 90745 | 2 | 2 |
| 90746 | 2 | 1 |
| 90805 | 17 | 2 |
| 90807 | 72 | 13 |
| 90808 | 9 | 6 |
| 90815 | 7 | 3 |
| 91364 | 1 | 1 |
| 92604 | 1 | 1 |
| 92612 | 33 | 1 |
| 92626 | 3 | 1 |
| 92627 | 3 | 1 |
| 92646 | 2 | 1 |
| 92647 | 552 | 2 |
| 92648 | 184 | 11 |
| 92649 | 14 | 6 |
| 92651 | 5 | 2 |
| 92660 | 2 | 2 |
| 92661 | 6 | 1 |
| 92887 | 402 | 1 |
| Not Reported | 4 | 2 |
| Grand Total | 1,394 | 68 |

Complaints by Time of Operation





long beach airport



Long Beach Airport

4100 E. Donald Douglas Drive, Long Beach, CA 90808

www.lgb.org • lgbapt@longbeach.gov

Administration • (562) 570-2619