

Airport Advisory Commission

Alvaro Castillo
Chair

Wayne Chaney Sr.
Vice Chair

Jeffrey Anderson

Robert L. Duarte Jr.

Katie Larson

Rita Nayak

Miles Nevin

Geetanjali Reuben



long beach
airport



Airport Management

Cynthia Guidry
Director

Juan López-Ríos
Deputy Airport Director

Ken Mason
Executive Assistant

Claudia Lewis
Manager of Administration
& Finance

Ron Reeves
Airport Operations & Facilities
Manager

Ambi Thurai
Engineering Officer

Dale Worsham
Administrative Officer

Karl Zittel
Airside Operations Officer

Matthew Brookes
Airport Properties Officer

Scott Garrett
Facilities Management Officer

Mony Chhey
Financial Services Officer

Scott Korobkin
Superintendent of Safety and
Security

Kate Kuykendall
Public Affairs Officer

Ryan McMullan
Noise & Environmental Affairs
Officer



Long Beach Airport Monthly Noise Report January 2021

COMMERCIAL AIRCRAFT LATE NIGHT ACTIVITY
LGB Current Month & Calendar Year-To-Date Statistics (10 PM- 7AM)
January 2021

January				Calendar Year-To-Date		
10PM - 11PM Activity	2021	2020	Change	2021	2020	Change
Air Carrier & Commuter Operations	1,370	2,917	-53.0%	1,370	2,917	-53.0%
American/Mesa/SkyWest Airlines	0	0		0	0	
Delta/SkyWest/Compass Airlines	0	3	-100.0%	0	3	-100.0%
FedEx	0	0		0	0	
Hawaiian Airlines	0	0		0	0	
JetBlue Airways	0	5	-100.0%	0	5	-100.0%
Southwest Airlines	0	0		0	0	
UPS	0	0		0	0	
Subtotal 10PM-11PM	0	8	-100.0%	0	8	-100.0%
11PM- 7AM Activity	2021	2020	Change	2021	2020	Change
American/Mesa/SkyWest Airlines	0	0		0	0	
Delta/SkyWest/Compass Airlines	0	0		0	0	
FedEx	0	0		0	0	
Hawaiian Airlines	0	1	-100.0%	0	1	-100.0%
JetBlue Airways	0	4	-100.0%	0	4	-100.0%
Southwest Airlines	0	0		0	0	
UPS	0	0		0	0	
Subtotal 11PM-7AM	0	5	-100.0%	0	5	-100.0%
TOTAL	0	13	-100.0%	0	13	-100.0%

Notes:

0.0% (0 of 1,370) of total commercial operations occurred between 10pm - 7am.

0.0 flights - Nightly average for all late night (10:00 PM—7:00 AM) commercial flights, includes unanticipated delays.

0.0 flights - Nightly average for commercial flights after 11 PM.

AIRPORT NOISE VIOLATIONS						
LGB Current Month & Calendar Year-To-Date Statistics						
January 2021						
January				Calendar Year-To-Date		
Air Carrier Noise Violations	2021	2020	Change	2021	2020	Change
American/Mesa/SkyWest	0	0		0	0	-100.0%
Delta/SkyWest/Compass	0	1	-100.0%	0	1	-100.0%
FedEx	0	0		0	0	
Hawaiian Airlines	0	1	-100.0%	0	1	-100.0%
JetBlue Airways	0	5	-100.0%	0	5	-100.0%
Southwest Airlines	0	0		0	0	
UPS	0	0		0	0	
Subtotal	0	7	-100.0%	0	7	-100.0%
Commuter Noise Violations	2021	2020	Change	2021	2020	Change
American/Mesa/SkyWest	0	0		0	0	
Delta/SkyWest/Compass	0	0		0	0	
Subtotal	0	0		0	0	
Non-Commercial Noise Violations	2021	2020	Change	2021	2020	Change
All GA, Charter & Other	7	10	-30.0%	7	10	-30.0%
TOTAL	7	17	-58.8%	7	17	-58.8%
Monetary Fines	2021	2020		2021	2020	
Airport Surcharges	\$100	\$2,400		\$100	\$2,400	
Consent Decree	\$0	\$24,000		\$0	\$24,000	
TOTAL	\$100	\$26,400		\$100	\$26,400	

AIRPORT OPERATIONS						
LGB Current Month & Calendar Year-To-Date Statistics						
January 2021						
January				Calendar Year-To-Date		
Airport Operations (FAA)	2021	2020	Change	2021	2020	Change
Air Carrier + Commuter Carriers	1,370	2,917	-53.0%	1,370	2,917	-53.0%
Air Taxi + General Aviation	22,938	23,494	-2.4%	22,938	23,494	-2.4%
Military Operations	113	89	27.0%	113	89	27.0%
Total Aircraft Operations	24,421	26,500	-7.8%	24,421	26,500	-7.8%

Notes:

0.03% (8 of 24,308 of the Airport's total aircraft operations (Commercial & GA) resulted in an aircraft noise violation.

0.0% (0 of 1,370) of the Airport's Commercial operations (Commercial & Commuter) resulted in an aircraft noise violation.

AIRCRAFT NOISE VIOLATORS

January 2021

OWNERNAME	DATE	TIME	A/D	RWY	FLIGHT #	A/C TYPE	ORIG/DEST	SEL	LIMIT	STATUS
FKM King Air LLC	1/3/2021	23:06:13	A	30		BE20		83.2	79.0	VIO
S R Global Partners LLC	1/6/2021	16:14:06	T	26R		SR22		95.3	92.0	VIO
Go Vector One LLC	1/12/2021	5:49:38	D	30		SR22		87.3	79.0	VIO
Sperax Inc.	1/13/2021	0:59:03	A	30		PA46		82.5	79.0	VIO
Americor Management LLC	1/16/2021	1:33:19	A	30		GLF4		85.4	79.0	VIO
KZ Aero LLC	1/16/2021	15:29:30	T	26R		SR20		n/a	n/a	VIO
Unique Educational Experiences	1/23/2021	16:35:21	T	26L		C172		n/a	n/a	VIO

DEFINITIONS:

A/C Type — Aircraft Type

A — Arrival

D — Departure

RWY — Runway

SEL — SENEL — Single Event Noise Exposure Level (dBA)

VIO—Violation

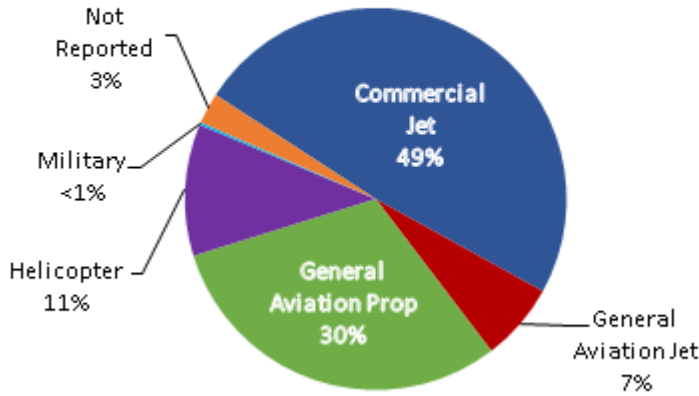
T—Touch and Go

VIO—Violation

LGB AIRCRAFT NOISE COMPLAINTS

January 2021

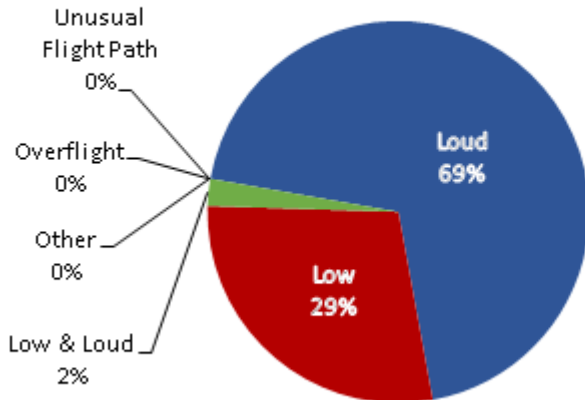
Complaints by Aircraft Types



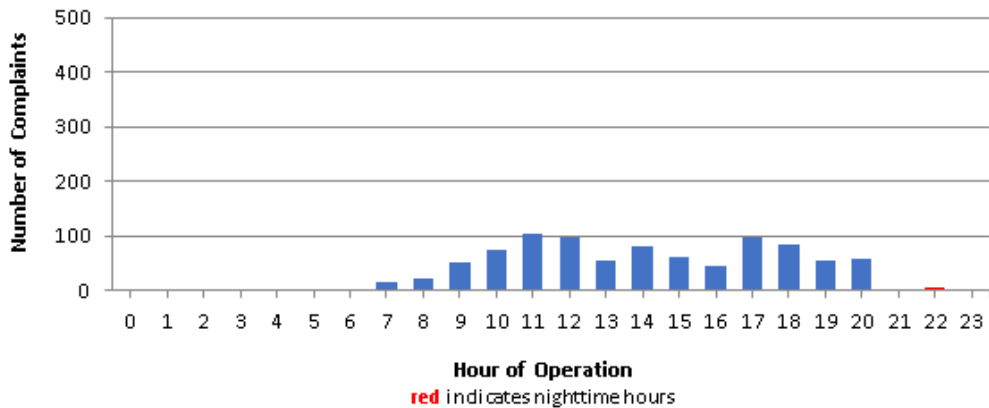
Complaints by Zip Code

Zip Code	Complaints	Units
90242	9	1
90278	113	1
90746	17	2
90805	25	4
90807	23	10
90808	1	1
90815	2	1
91364	2	1
92612	52	1
92626	218	1
92627	15	1
92629	1	1
92647	388	1
92648	38	6
92649	1	1
92651	4	2
92653	2	1
92656	4	2
92660	6	2
92705	1	1
Not Reported	1	1
Grand Total	923	42

Complaints by Concern



Complaints by Time of Operation





long beach airport



Long Beach Airport

4100 E. Donald Douglas Drive, Long Beach, CA 90808

www.lgb.org • lgbapt@longbeach.gov

Administration • (562) 570-2619