

Airport Advisory Commission

Alvaro Castillo
Chair

Wayne Chaney Sr.
Vice Chair

Jeffrey Anderson

Christine Bos

Robert L. Duarte Jr.

Katie Larson

Rita Nayak

Miles Nevin

Geetanjali Reuben

Airport Management

Cynthia Guidry
Director

Juan López-Ríos
Deputy Airport Director

Ken Mason
Executive Assistant

Claudia Lewis
Manager of Administration
& Finance

Ron Reeves
Airport Operations & Facilities
Manager

Ambi Thurai
Engineering Officer

Dale Worsham
Administrative Officer

Karl Zittel
Airside Operations Officer

Matthew Brookes
Airport Properties Officer

Scott Garrett
Facilities Management Officer

Mony Chhey
Financial Services Officer

Scott Korobkin
Superintendent of Safety and
Security

Kate Kuykendall
Public Affairs Officer

Ryan McMullan
Noise & Environmental Affairs
Officer



long beach
airport



Long Beach Airport Monthly Noise Report April 2021

COMMERCIAL AIRCRAFT LATE NIGHT ACTIVITY

LGB Current Month & Calendar Year-To-Date Statistics (10 PM- 7AM)

April 2021

April				Calendar Year-To-Date		
10PM - 11PM Activity	2021	2020	Change	2021	2020	Change
Air Carrier & Commuter Operations	2,074	610	240.0%	6,524	8,792	-25.8%
American/Mesa/SkyWest/Envoy	0	0		0	0	
Delta/SkyWest Airlines	3	0	100.0%	4	7	-42.9%
FedEx	0	0		0	0	
Hawaiian Airlines	0	0		1	1	0.0%
JetBlue Airways	0	0		0	21	-100.0%
Southwest Airlines	1	0	100.0%	2	0	100.0%
UPS	0	0		1	0	100.0%
Subtotal 10PM-11PM	4	0	100.0%	8	29	-72.4%
<hr/>						
11PM- 7AM Activity	2021	2020	Change	2021	2020	Change
American/Mesa/SkyWest/Envoy	0	0		0	0	
Delta/SkyWest Airlines	0	0		0	0	
FedEx	0	0		0	0	
Hawaiian Airlines	0	0		0	2	-100.0%
JetBlue Airways	0	0		0	16	-100.0%
Southwest Airlines	0	0		0	0	
UPS	0	0		1	0	100.0%
Subtotal 11PM-7AM	0	0		1	18	-94.4%
TOTAL	4	0	100.0%	9	47	-80.9%

Notes:

0.2% (4 of 2,074) of total commercial operations occurred between 10pm - 7am.

0.1 flights - Nightly average for all late night (10:00 PM—7:00 AM) commercial flights, includes unanticipated delays.

0..0 flights - Nightly average for commercial flights after 11 PM.

AIRPORT NOISE VIOLATIONS						
LGB Current Month & Calendar Year-To-Date Statistics						
April 2021						
April				Calendar Year-To-Date		
Air Carrier Noise Violations	2021	2020	Change	2021	2020	Change
American/Mesa/SkyWest/Envoy	0	0		0	0	
Delta/SkyWest Airlines	0	0		0	1	-100.0%
FedEx	0	0		0	0	
Hawaiian Airlines	0	0		0	2	-100.0%
JetBlue Airways	0	0		0	14	-100.0%
Southwest Airlines	0	0		0	0	
UPS	0	0		1	0	100.0%
Subtotal	0	0		1	17	-94.1%
Commuter Noise Violations	2021	2020	Change	2021	2020	Change
American/Mesa/SkyWest/Envoy	0	0		0	0	
Delta/SkyWest Airlines	0	0		0	0	
Subtotal	0	0		0	0	
Non-Commercial Noise Violations	2021	2020	Change	2021	2020	Change
All GA, Charter & Other	8	7	14.3%	34	36	-5.6%
TOTAL	8	7	14.3%	35	53	-34.0%
Monetary Fines	2021	2020		2021	2020	
Airport Surcharges	\$300	\$300		\$600	\$6,500	
Consent Decree	\$0	\$0		\$0	\$72,000	
TOTAL	\$300	\$300		\$600	\$78,500	

AIRPORT OPERATIONS						
LGB Current Month & Calendar Year-To-Date Statistics						
April 2021						
April				Calendar Year-To-Date		
Airport Operations (FAA)	2021	2020	Change	2021	2020	Change
Air Carrier + Commuter Carriers	2,074	610	240.0%	6,524	8,792	-25.8%
Air Taxi + General Aviation	28,003	11,965	134.0%	101,958	78,440	30.0%
Military Operations	73	119	-38.7%	384	411	-6.6%
Total Aircraft Operations	30,150	12,694	137.5%	108,866	87,643	24.2%

Notes:

0.03% (8 of 30,077) of the Airport's total aircraft operations (Commercial & GA) resulted in an aircraft noise violation.
0.1% (0 of 2,074) of the Airport's Commercial operations (Commercial & Commuter) resulted in an aircraft noise violation.

AIRCRAFT NOISE VIOLATORS

April 2021

OWNERNAME	DATE	TIME	A/D	RWY	FLIGHT #	A/C TYPE	ORIG/DEST	SEL	LIMIT	STATUS
Private	4/5/2021	20:23:13	T	26R		P32R				VIO
Private	4/6/2021	23:18:39	A	30		PA44		82.7	79.0	VIO
Wilmington Trust Company Trustee	4/8/2021	6:02:41	D	26R		CL30				VIO
Wayne Mogg Inc.	4/12/2021	23:25:33	M	30		P28A				VIO
Private	4/18/2021	2:25:46	A	30		PA44		82.5	79.0	VIO
Evergreen Executive Holdings LLC	4/18/2021	5:35:24	A	30		GLF4		88.8	79.0	VIO
Four Brothers 2 LLC	4/20/2021	5:51:45	D	30		GLEX		83.1	79.0	VIO
D&I Transportation LLC	4/28/2021	6:48:00	D	30		BE18		92.8	90.0	VIO

DEFINITIONS:

A/C Type — Aircraft Type

A/D — Arrival/Departure

M — Missed Approach

RWY — Runway

SEL — SENEL — Single Event Noise Exposure Level (dBA)

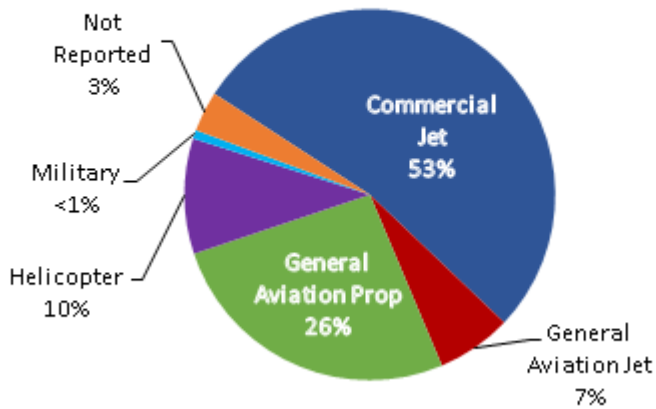
T—Touch and Go

V—Violation

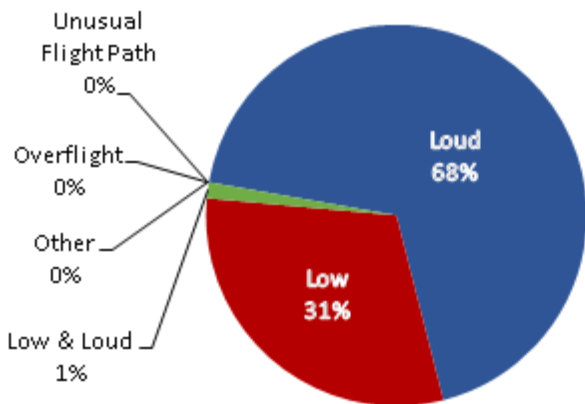
LGB AIRCRAFT NOISE COMPLAINTS

April 2021

Complaints by Aircraft Types



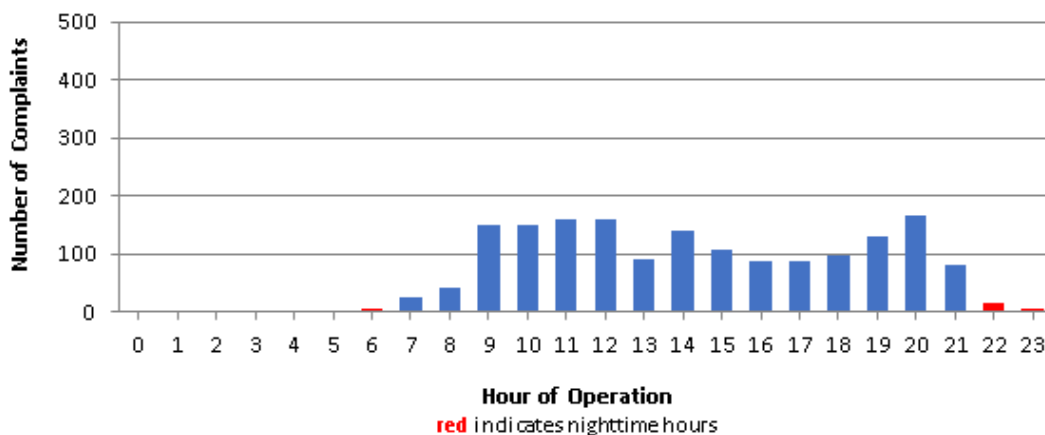
Complaints by Concern



Complaints by Zip Code

Zip Code	Complaints	Units
90242	9	1
90278	35	1
90505	1	1
90731	1	1
90746	16	1
90755	1	1
90804	9	1
90805	32	5
90807	129	19
90808	8	3
90815	9	6
91364	3	1
92612	135	1
92615	7	1
92626	426	2
92627	10	1
92646	27	1
92647	719	2
92648	100	10
92649	8	4
92653	5	1
92656	5	1
92660	6	1
92661	2	1
92676	4	1
92705	1	1
Not Reported	2	2
Grand Total	1,710	71

Complaints by Time of Operation





long beach airport



Long Beach Airport

4100 E. Donald Douglas Drive, Long Beach, CA 90808

www.lgb.org • lgbapt@longbeach.gov

Administration • (562) 570-2619