

## Airport Advisory Commission

**Miles Nevin**  
Chair

**Alvaro Castillo**  
Vice Chair

**Jeffrey Anderson**

**Christine Bos**

**Wayne Chaney Sr.**

**Robert L. Duarte Jr.**

**Katie Larson**

**Rita Nayak**

**Geetanjali Reuben**

## Airport Management

**Cynthia Guidry**  
Director

**Juan López-Ríos**  
Deputy Airport Director

**Ken Mason**  
Executive Assistant

**Claudia Lewis**  
Manager of Administration  
& Finance

**Ron Reeves**  
Airport Operations & Facilities  
Manager

**Ambi Thurai**  
Engineering Officer

**Dale Worsham**  
Administrative Officer

**Karl Zittel**  
Airsides Operations Officer

**Matthew Brookes**  
Airport Properties Officer

**Scott Garrett**  
Facilities Management Officer

**Mony Chhey**  
Financial Services Officer

**Scott Korobkin**  
Superintendent of Safety and  
Security

**Kate Kuykendall**  
Public Affairs Officer

**Ryan McMullan**  
Noise & Environmental Affairs  
Officer



# Long Beach Airport Monthly Noise Report May 2021

**COMMERCIAL AIRCRAFT LATE NIGHT ACTIVITY**  
**LGB Current Month & Calendar Year-To-Date Statistics (10 PM- 7AM)**  
**May 2021**

				Calendar Year-To-Date		
				May		
10PM - 11PM Activity	2021	2020	Change	2021	2020	Change
<b>Air Carrier &amp; Commuter Operations</b>	<b>2,155</b>	<b>600</b>	<b>259.2%</b>	<b>8,679</b>	<b>9,392</b>	<b>-7.6%</b>
American/Mesa/SkyWest/Envoy	1	0	100.0%	1	0	100.0%
Delta/SkyWest Airlines	1	0	100.0%	5	7	-28.6%
FedEx	0	0		0	0	
Hawaiian Airlines	0	0		1	1	0.0%
JetBlue Airways	0	0		0	21	-100.0%
Southwest Airlines	2	0	100.0%	4	0	100.0%
UPS	0	0		1	0	100.0%
<b>Subtotal 10PM-11PM</b>	<b>4</b>	<b>0</b>	<b>100.0%</b>	<b>12</b>	<b>29</b>	<b>-58.6%</b>
11PM- 7AM Activity	2021	2020	Change	2021	2020	Change
American/Mesa/SkyWest/Envoy	0	0		0	0	
Delta/SkyWest Airlines	0	0		0	0	
FedEx	0	0		0	0	
Hawaiian Airlines	0	0		0	2	-100.0%
JetBlue Airways	0	0		0	16	-100.0%
Southwest Airlines	0	0		0	0	
UPS	0	0		1	0	100.0%
<b>Subtotal 11PM-7AM</b>	<b>0</b>	<b>0</b>		<b>1</b>	<b>18</b>	<b>-94.4%</b>
<b>TOTAL</b>	<b>4</b>	<b>0</b>	<b>100.0%</b>	<b>13</b>	<b>47</b>	<b>-72.3%</b>

Notes:

0.2% (4 of 2,021) of total commercial operations occurred between 10pm - 7am.

0.1 flights - Nightly average for all late night (10:00 PM—7:00 AM) commercial flights, includes unanticipated delays.

0.0 flights - Nightly average for commercial flights after 11 PM.

<b>AIRPORT NOISE VIOLATIONS</b>						
<b>LGB Current Month &amp; Calendar Year-To-Date Statistics</b>						
<b>May 2021</b>						
<b>May</b>				<b>Calendar Year-To-Date</b>		
<b>Air Carrier Noise Violations</b>	<b>2021</b>	<b>2020</b>	<b>Change</b>	<b>2021</b>	<b>2020</b>	<b>Change</b>
American/Mesa/SkyWest/Envoy	0	0		0	0	
Delta/SkyWest Airlines	0	0		0	1	-100.0%
FedEx	0	0		0	0	
Hawaiian Airlines	0	0		0	2	-100.0%
JetBlue Airways	0	0		0	14	-100.0%
Southwest Airlines	0	0		0	0	
UPS	0	0		1	0	100.0%
<b>Subtotal</b>	<b>0</b>	<b>0</b>		<b>1</b>	<b>17</b>	<b>-94.1%</b>
<b>Commuter Noise Violations</b>	<b>2021</b>	<b>2020</b>	<b>Change</b>	<b>2021</b>	<b>2020</b>	<b>Change</b>
American/Mesa/SkyWest/Envoy	0	0		0	0	
Delta/SkyWest Airlines	0	0		0	0	
<b>Subtotal</b>	<b>0</b>	<b>0</b>		<b>0</b>	<b>0</b>	
<b>Non-Commercial Noise Violations</b>	<b>2021</b>	<b>2020</b>	<b>Change</b>	<b>2021</b>	<b>2020</b>	<b>Change</b>
All GA, Charter & Other	25	1	2,400.0%	59	37	59.5%
<b>TOTAL</b>	<b>25</b>	<b>1</b>	<b>2,400.0%</b>	<b>60</b>	<b>54</b>	<b>11.1%</b>
<b>Monetary Fines</b>	<b>2021</b>	<b>2020</b>		<b>2021</b>	<b>2020</b>	
Airport Surcharges	\$900	\$0		\$1,500	\$6,500	
Consent Decree	\$0	\$0		\$0	\$72,000	
<b>TOTAL</b>	<b>\$900</b>	<b>\$0</b>		<b>\$1,500</b>	<b>\$78,500</b>	

<b>AIRPORT OPERATIONS</b>						
<b>LGB Current Month &amp; Calendar Year-To-Date Statistics</b>						
<b>May 2021</b>						
<b>May</b>				<b>Calendar Year-To-Date</b>		
<b>Airport Operations (FAA)</b>	<b>2021</b>	<b>2020</b>	<b>Change</b>	<b>2021</b>	<b>2020</b>	<b>Change</b>
Air Carrier + Commuter Carriers	2,155	600	259.2%	8,679	9,392	-7.6%
Air Taxi + General Aviation	27,278	19,808	37.7%	129,236	98,248	31.5%
Military Operations	86	111	-22.5%	470	522	-10.0%
<b>Total Aircraft Operations</b>	<b>29,519</b>	<b>20,519</b>	<b>43.9%</b>	<b>138,385</b>	<b>108,162</b>	<b>27.9%</b>

Notes:

0.08% (25 of 29,433) of the Airport's total aircraft operations (Commercial & GA) resulted in an aircraft noise violation.  
0.0% (0 of 2,155) of the Airport's Commercial operations (Commercial & Commuter) resulted in an aircraft noise violation.

# AIRCRAFT NOISE VIOLATORS

## May 2021

OWNERNAME	DATE	TIME	A/D	RWY	FLIGHT #	A/C TYPE	ORIG/DEST	SEL	LIMIT	STATUS
Private	5/3/2021	19:26:00	T	26L		SLG2				VIO
OCR Aviation	5/3/2021	23:53:07	A	30		C525		85.6	79.0	VIO
Private	5/3/2021	23:57:14	A	30		PA44		82.5	79.0	VIO
Private	5/4/2021	20:28:00	M	30		C72R				VIO
U.S. Home Corp.	5/5/2021	1:35:01	A	30		GL5T		88.3	79.0	VIO
Private	5/14/2021	8:57:13	D	26R		HXB		94.8	92.0	VIO
Ave Marina Aviation Co	5/15/2021	15:45:18	M	30		BE76				VIO
Mann Aviation Inc.	5/15/2021	16:45:07	T	26L		C172				VIO
Unique Educational Experiences	5/15/2021	16:56:43	T	26L		C172				VIO
Moran Consulting Corp.	5/17/2021	23:13:23	A	30		BE35		81.1	79.0	VIO
E & R Aviation Services	5/22/2021	15:21:35	T	26R		C172				VIO
Private	5/23/2021	15:21:00	T	26L		LTSP				VIO
Private	5/23/2021	17:21:00	M	30		C172				VIO
Baja Aerojet Services	5/24/2021	23:35:37	A	30		BE20		84.6	79.0	VIO
Jeffery and Weiss Holdings LLC	5/25/2021	20:40:45	T	26L		C172				VIO
RLB Holdings Transportation LLC	5/26/2021	0:03:05	A	30		F900		86.9	79.0	VIO
Private	5/26/2021	12:21:04	D	08L		PA32		90.2	88.0	VIO
Open Sky Airways	5/27/2021	19:29:00	M	30		C172				VIO
Private	5/29/2021	17:47:00	M	30		C172				VIO
Flight Operations Aircraft LLC	5/29/2021	18:50:00	M	30		C172				VIO
Private	5/30/2021	18:21:00	M	30		C172				VIO
Jade Air	5/31/2021	15:53:00	T	26R		C172				VIO
Private	5/31/2021	16:01:00	T	26L		C172				VIO
Private	5/31/2021	18:03:00	T	26R		C152				VIO
Private	5/31/2021	20:03:00	M	30		C172				VIO

**DEFINITIONS:**

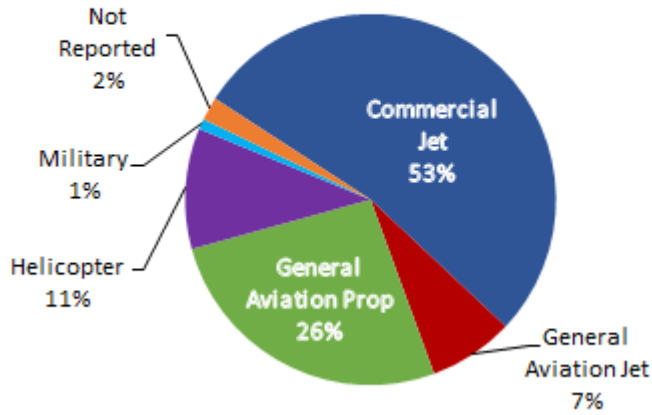
**A/C Type** — Aircraft Type  
**A/D** — Arrival/Departure  
**M** — Missed Approach  
**RWY** — Runway

**SEL** — SENEL — Single Event Noise Exposure Level (dBA)  
**T**—Touch and Go  
**V**—Violation

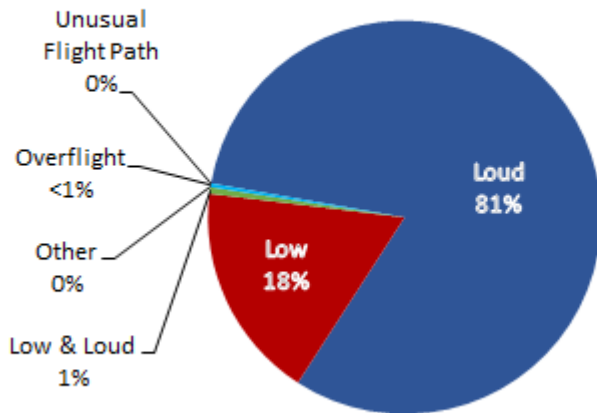
# LGB AIRCRAFT NOISE COMPLAINTS

## May 2021

### Complaints by Aircraft Types

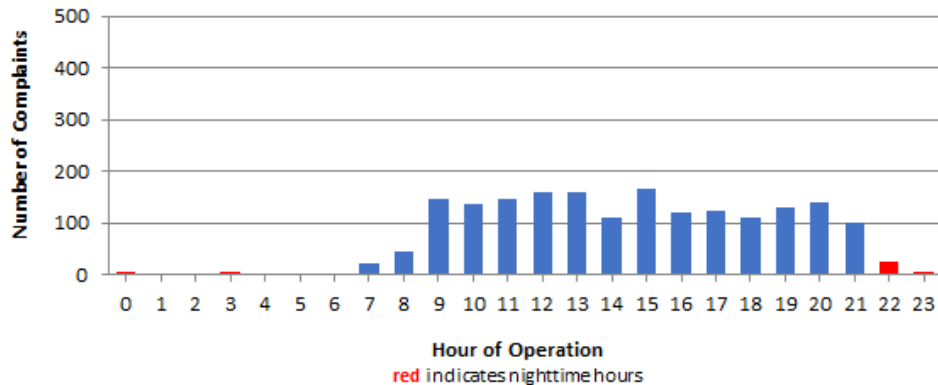


### Complaints by Concern



Complaints by Zip Code		
Zip Code	Complaints	Units
90242	13	1
90278	42	1
90712	2	2
90740	1	1
90745	2	2
90746	10	4
90803	1	1
90805	35	3
90807	110	22
90808	2	2
90815	3	3
91364	2	1
92612	106	1
92626	456	1
92627	12	2
92646	7	1
92647	722	3
92648	302	10
92649	32	3
92660	4	1
92661	2	1
92676	2	1
Not Reported	4	4
<b>Grand Total</b>	<b>1,872</b>	<b>71</b>

### Complaints by Time of Operation





# long beach airport



## Long Beach Airport

4100 E. Donald Douglas Drive, Long Beach, CA 90808

[www.lgb.org](http://www.lgb.org) • [lgbapt@longbeach.gov](mailto:lgbapt@longbeach.gov)

Administration • (562) 570-2619