

Airport Advisory Commission

Alvaro Castillo
Chair

Wayne Chaney Sr.
Vice Chair

Jeffrey Anderson

Robert L. Duarte Jr.

Katie Larson

Rita Nayak

Miles Nevin

Geetanjali Reuben



Airport Management

Cynthia Guidry
Director

Juan López-Ríos
Deputy Airport Director

Ken Mason
Executive Assistant

Claudia Lewis
Manager of Administration
& Finance

Ron Reeves
Airport Operations & Facilities
Manager

Ambi Thurai
Engineering Officer

Dale Worsham
Administrative Officer

Karl Zittel
Airsides Operations Officer

Matthew Brookes
Airport Properties Officer

Scott Garrett
Facilities Management Officer

Mony Chhey
Financial Services Officer

Scott Korobkin
Superintendent of Safety and
Security

Kate Kuykendall
Public Affairs Officer

Ryan McMullan
Noise & Environmental Affairs
Officer



Long Beach Airport Monthly Noise Report September 2020

COMMERCIAL AIRCRAFT LATE NIGHT ACTIVITY
LGB Current Month & Calendar Year-To-Date Statistics (10 PM- 7AM)
September 2020

September				Calendar Year-To-Date		
10PM - 11PM Activity	2020	2019	Change	2020	2019	Change
Air Carrier & Commuter Operations	1,103	2,834	-61.1%	13,472	24,564	-45.2%
American/Mesa/SkyWest Airlines	0	1	-100.0%	0	14	-100.0%
Delta/SkyWest/Compass Airlines	0	2	-100.0%	8	23	-65.2%
FedEx	0	0		0	0	
Hawaiian Airlines	0	0		1	3	-66.7%
JetBlue Airways	0	11	-100.0%	22	92	-76.1%
Southwest Airlines	0	1	-100.0%	0	8	-100.0%
UPS	0	0		0	0	
Subtotal 10PM-11PM	0	15	-100.0%	31	140	-77.9%
11PM- 7AM Activity	2020	2019	Change	2020	2019	Change
American/Mesa/SkyWest Airlines	0	0		0	10	-100.0%
Delta/SkyWest/Compass Airlines	0	0		0	4	-100.0%
FedEx	0	0		0	0	
Hawaiian Airlines	0	0		2	2	0.0%
JetBlue Airways	0	4	-100.0%	18	60	-70.0%
Southwest Airlines	0	0		0	0	
UPS	0	0		0	3	-100.0%
Subtotal 11PM-7AM	0	4	-100.0%	20	79	-74.7%
TOTAL	0	19	-100.0%	51	219	-76.7%

Notes:

0.0% (0 of 1,103) of total commercial operations occurred between 10pm - 7am.

0.0 flights - Nightly average for all late night (10:00 PM—7:00 AM) commercial flights, includes unanticipated delays.

0.0 flights - Nightly average for commercial flights after 11 PM.

AIRPORT NOISE VIOLATIONS						
LGB Current Month & Calendar Year-To-Date Statistics						
September 2020						
September				Calendar Year-To-Date		
Air Carrier Noise Violations	2020	2019	Change	2020	2019	Change
American/Mesa Airlines	0	0		0	12	-100.0%
Delta/SkyWest/Compass	0	0		1	4	-75.0%
FedEx	0	0		0	0	
Hawaiian Airlines	0	0		2	2	0.0%
JetBlue Airways	0	4	-100.0%	16	63	-74.6%
Southwest Airlines	0	0		0	1	-100.0%
UPS	0	0		0	1	-100.0%
Subtotal	0	4	-100.0%	19	83	-77.1%
Commuter Noise Violations	2020	2019	Change	2020	2019	Change
American/SkyWest Airlines	0	0		0	0	
Delta/SkyWest/Compass	0	0		0	0	
Subtotal	0	0		0	0	
Non-Commercial Noise Violations	2020	2019	Change	2020	2019	Change
All GA, Charter & Other	11	12	-8.3%	81	119	-31.9%
TOTAL	11	16	-31.3%	100	202	-50.5%
Monetary Fines	2020	2019		2020	2019	
Airport Surcharges	\$100	\$1,500		\$7,700	\$29,600	
Consent Decree	\$0	\$24,000		\$78,000	\$342,000	
TOTAL	\$100	\$25,500		\$85,700	\$371,600	

AIRPORT OPERATIONS						
LGB Current Month & Calendar Year-To-Date Statistics						
September 2020						
September				Calendar Year-To-Date		
Airport Operations (FAA)	2020	2019	Change	2020	2019	Change
Air Carrier + Commuter Carriers	1,103	2,834	-61.1%	13,472	24,564	-45.2%
Air Taxi + General Aviation	25,394	23,831	6.6%	199,029	215,449	-7.6%
Military Operations	89	80	11.3%	961	924	4.0%
Total Aircraft Operations	26,586	26,745	-0.6%	213,462	240,937	-11.4%

Notes:

0.04% (11 of 26,497) of the Airport's total aircraft operations (Commercial & GA) resulted in an aircraft noise violation.
0.0% (0 of 1,103) of the Airport's Commercial operations (Commercial & Commuter) resulted in an aircraft noise violation.

AIRCRAFT NOISE VIOLATORS

September 2020

OWNERNAME	DATE	TIME	A/D	RWY	FLIGHT #	A/C TYPE	ORIG/DEST	SEL	LIMIT	STATUS
Qatar Airways	9/1/2020	0:19:02	A	30		GLF6		86.9	79.0	VIO
Volerjet Business Corp.	9/2/2020	22:25:12	D	30		LJ55		93.4	90.0	VIO
C2 Aviation LLC	9/5/2020	2:26:27	A	30		GLF4		91.2	79.0	VIO
Private	9/5/2020	10:13:58	D	26R		C210		94.2	92.0	VIO
Private	9/7/2020	15:52:15	T	26L		P28A		N/A	N/A	VIO
Sierra Systems	9/8/2020	20:54:04	A	26R		C337		92.0	88.0	VIO
Private	9/11/2020	20:48:00	T	26R		C172		N/A	N/A	VIO
Private	9/17/2020	21:07:30	M	30		C172		N/A	N/A	VIO
Private	9/18/2020	15:03:00	D	26R		C172		95.2	92.0	VIO
Universal Flight Operation Inc.	9/19/2020	17:50:26	M	30		C152		N/A	N/A	VIO
Priority Air Charter LLC	9/30/2020	23:19:41	A	30		PC12		90.9	79.0	VIO

DEFINITIONS:

A/C Type — Aircraft Type

RWY — Runway

A — Arrival

SEL — SENEL — Single Event Noise Exposure Level (dBA)

ALT ENF — Alternative Enforcement

VIO—Violation

D — Departure

T—Touch and Go

M — Missed Approach

VIO—Violation

AIR CARRIER NOISE BUDGET PERFORMANCE

October 2019 - September 2020

RMT #	NOISE BUDGET	ACTUAL	PERCENT BUDGET USED
9	70.7	26.8	37.9%
10	84.6	38.9	46.0%

Source: Long Beach Airport Staff Calculations

DEFINITIONS:

RMT — Remote Monitoring Terminal

TOTAL NOISE BUDGET PERFORMANCE

October 2019 - September 2020

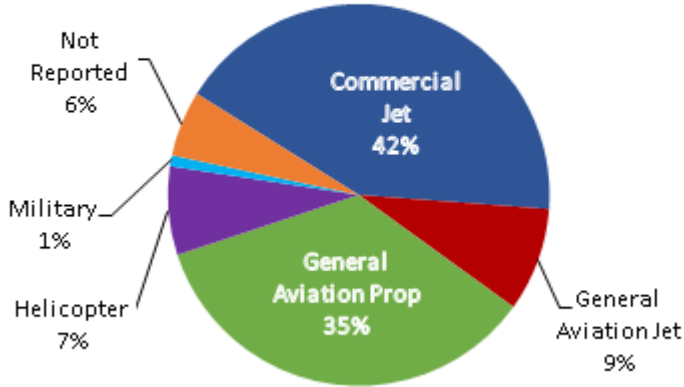
RMT #	NOISE BUDGET	ACTUAL	PERCENT BUDGET USED
9	102.7	33.7	32.8%
10	120.9	48.5	40.1%

Source: Long Beach Airport Staff Calculations

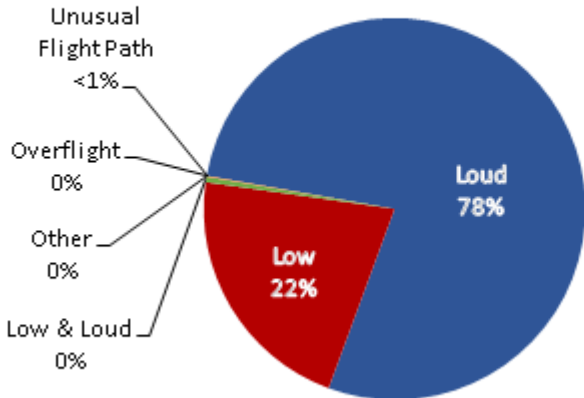
LGB AIRCRAFT NOISE COMPLAINTS

September 2020

Complaints by Aircraft Types



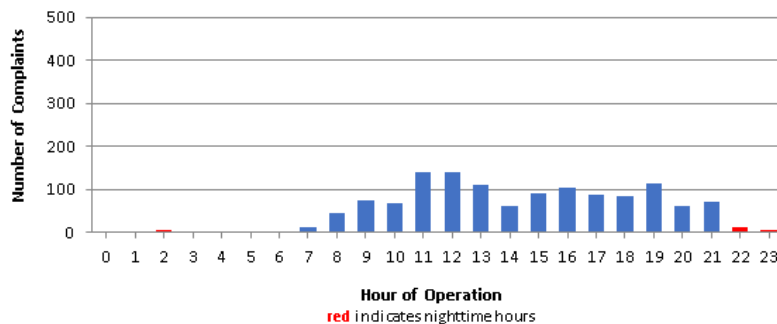
Complaints by Concern



Complaints by Zip Code

Zip Code	Complaints	Units
90242	3	1
90278	247	1
90712	2	2
90740	1	1
90746	1	1
90803	1	1
90805	16	3
90807	31	11
90808	4	4
90814	3	1
90815	6	2
91364	1	1
92603	1	1
92612	67	1
92615	6	1
92625	1	1
92626	206	1
92627	8	2
92629	2	1
92646	2	1
92647	474	2
92648	123	8
92649	31	4
92651	3	2
92656	1	1
92660	7	2
92661	11	2
92662	1	1
92676	1	1
92807	1	1
92869	30	1
Not Reported	4	2
Grand Total	1,296	65

Complaints by Time of Operation





long beach airport



Long Beach Airport

4100 E. Donald Douglas Drive, Long Beach, CA 90808

www.lgb.org • lgbapt@longbeach.gov

Administration • (562) 570-2619