

Airport Advisory Commission

Alvaro Castillo
Chair

Wayne Chaney Sr.
Vice Chair

Jeffrey Anderson

Robert L. Duarte Jr.

Katie Larson

Rita Nayak

Miles Nevin

Geetanjali Reuben



long beach
airport



Airport Management

Cynthia Guidry
Director

Juan López-Ríos
Deputy Airport Director

Ken Mason
Executive Assistant

Claudia Lewis
Manager of Administration
& Finance

Ron Reeves
Airport Operations & Facilities
Manager

Ambi Thurai
Engineering Officer

Dale Worsham
Administrative Officer

Karl Zittel
Airside Operations Officer

Matthew Brookes
Airport Properties Officer

Scott Garrett
Facilities Management Officer

Mony Chhey
Financial Services Officer

Scott Korobkin
Superintendent of Safety and
Security

Kate Kuykendall
Public Affairs Officer

Ryan McMullan
Noise & Environmental Affairs
Officer



Long Beach Airport Monthly Noise Report November 2020

COMMERCIAL AIRCRAFT LATE NIGHT ACTIVITY
LGB Current Month & Calendar Year-To-Date Statistics (10 PM- 7AM)
November 2020

November				Calendar Year-To-Date		
10PM - 11PM Activity	2020	2019	Change	2020	2019	Change
Air Carrier & Commuter Operations	1,276	2,854	-55.3%	15,908	30,231	-47.4%
American/Mesa/SkyWest Airlines	0	0		0	15	-100.0%
Delta/SkyWest/Compass Airlines	3	3	0.0%	12	26	-53.8%
FedEx	0	0		0	0	
Hawaiian Airlines	0	0		1	3	-66.7%
JetBlue Airways	0	8	-100.0%	22	105	-79.0%
Southwest Airlines	0	0		0	9	-100.0%
UPS	0	0		0	0	
Subtotal 10PM-11PM	3	11	-72.7%	35	158	-77.8%
11PM- 7AM Activity	2020	2019	Change	2020	2019	Change
American/Mesa/SkyWest Airlines	0	0		0	10	-100.0%
Delta/SkyWest/Compass Airlines	0	0		0	4	-100.0%
FedEx	0	1	-100.0%	0	1	-100.0%
Hawaiian Airlines	0	0		2	2	0.0%
JetBlue Airways	0	9	-100.0%	18	72	-75.0%
Southwest Airlines	0	0		0	0	
UPS	0	0		0	3	-100.0%
Subtotal 11PM-7AM	0	10	-100.0%	20	92	-78.3%
TOTAL	3	21	-85.7%	55	250	-78.0%

Notes:

0.2% (3 of 1,276) of total commercial operations occurred between 10pm - 7am.

0.1 flights - Nightly average for all late night (10:00 PM—7:00 AM) commercial flights, includes unanticipated delays.

0.0 flights - Nightly average for commercial flights after 11 PM.

AIRPORT NOISE VIOLATIONS						
LGB Current Month & Calendar Year-To-Date Statistics						
November 2020						
November				Calendar Year-To-Date		
Air Carrier Noise Violations	2020	2019	Change	2020	2019	Change
American/Mesa/SkyWest	0	0		0	12	-100.0%
Delta/SkyWest/Compass	0	0		1	4	-75.0%
FedEx	0	1	-100.0%	0	1	-100.0%
Hawaiian Airlines	0	0		2	2	0.0%
JetBlue Airways	0	10	-100.0%	16	76	-78.9%
Southwest Airlines	0	0		0	1	-100.0%
UPS	0	0		0	1	-100.0%
Subtotal	0	11	-100.0%	19	97	-80.4%
Commuter Noise Violations	2020	2019	Change	2020	2019	Change
American/Mesa/SkyWest	0	0		0	0	
Delta/SkyWest/Compass	0	0		0	0	
Subtotal	0	0		0	0	
Non-Commercial Noise Violations	2020	2019	Change	2020	2019	Change
All GA, Charter & Other	7	6	16.7%	105	136	-22.8%
TOTAL	7	17	-58.8%	124	233	-46.8%
Monetary Fines	2020	2019		2020	2019	
Airport Surcharges	\$0	\$2,700		\$8,400	\$34,000	
Consent Decree	\$0	\$36,000		\$78,000	\$396,000	
TOTAL	\$0	\$38,700		\$86,400	\$430,000	

AIRPORT OPERATIONS						
LGB Current Month & Calendar Year-To-Date Statistics						
November 2020						
November				Calendar Year-To-Date		
Airport Operations (FAA)	2020	2019	Change	2020	2019	Change
Air Carrier + Commuter Carriers	1,276	2,854	-55.3%	15,908	30,231	-47.4%
Air Taxi + General Aviation	23,306	22,546	3.4%	246,454	266,436	-7.5%
Military Operations	95	93	2.2%	1,139	1,115	2.2%
Total Aircraft Operations	24,677	25,493	-3.2%	263,501	297,782	-11.5%

Notes:

0.03% (7 of 24,582) of the Airport's total aircraft operations (Commercial & GA) resulted in an aircraft noise violation.

0.0% (0 of 1,160) of the Airport's Commercial operations (Commercial & Commuter) resulted in an aircraft noise violation.

AIRCRAFT NOISE VIOLATORS

November 2020

OWNERNAME	DATE	TIME	A/D	RWY	FLIGHT #	A/C TYPE	ORIG/DEST	SEL	LIMIT	STATUS
Eureka International Inc.	11/9/2020	12:27:41	D	26R		C310		94.4	92.0	VIO
Central Christian College of Kansas	11/11/2020	18:10:16	D	26R		BL17		95.1	92.0	VIO
Flightplan Aviation Aircraft and Training LLC	11/14/2020	5:50:16	D	30		C510		83.2	79.0	VIO
3D Sceneshop LLC	11/15/2020	15:10:08	T	26R		C172		n/a	n/a	VIO
Maluhia LLC	11/21/2020	3:38:49	A	30		CL60		86.8	79.0	VIO
Golden Eagle Flyers Inc.	11/23/2020	2:09:23	A	30		C421		88.3	79.0	VIO
XCEL Jet Managemnet Inc.	11/24/2020	6:50:44	A	30		LJ40		92.2	90.0	VIO

DEFINITIONS:

A/C Type — Aircraft Type

A — Arrival

D — Departure

RWY — Runway

SEL — SENEL — Single Event Noise Exposure Level (dBA)

VIO—Violation

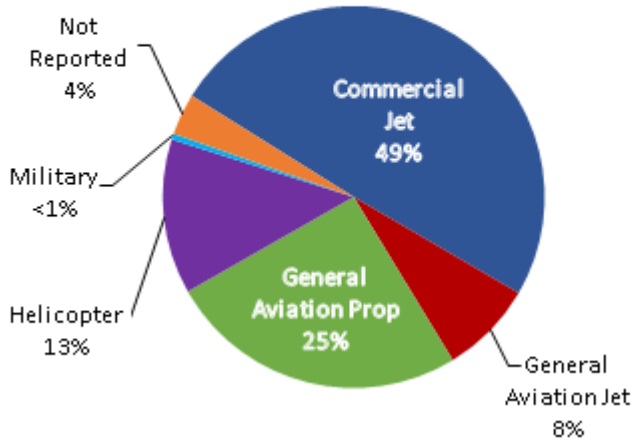
T—Touch and Go

VIO—Violation

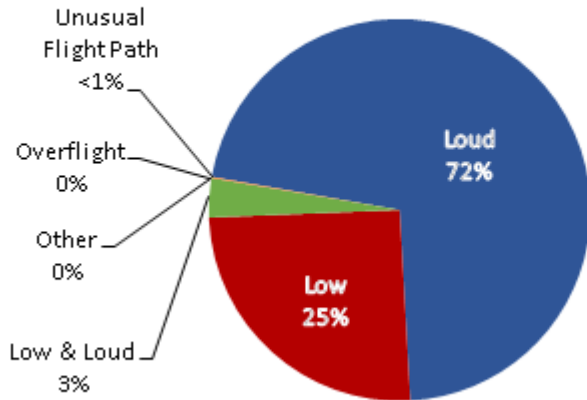
LGB AIRCRAFT NOISE COMPLAINTS

November 2020

Complaints by Aircraft Types

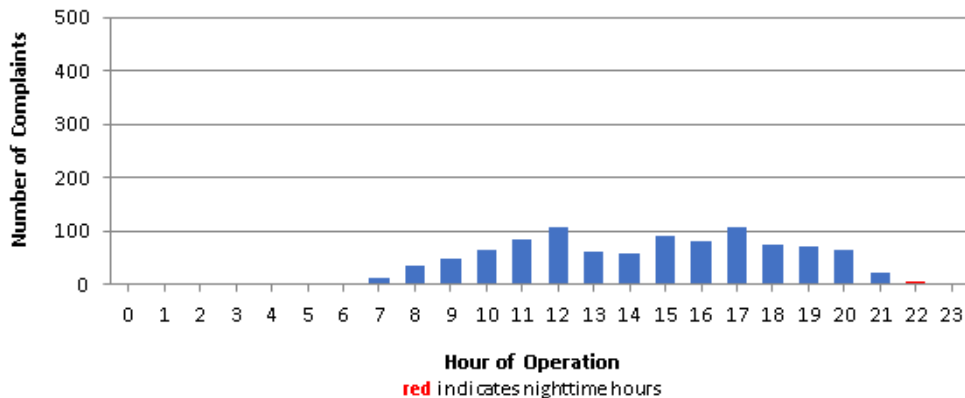


Complaints by Concern



Complaints by Zip Code		
Zip Code	Complaints	Units
90242	3	1
90278	129	2
90745	1	1
90746	26	1
90755	4	1
90805	11	3
90807	21	5
90808	2	2
90815	6	1
91364	1	1
92612	11	1
92615	2	1
92626	250	1
92627	2	1
92629	2	1
92646	1	1
92647	412	2
92648	77	7
92649	23	2
92651	1	1
92656	3	2
92660	4	1
92661	2	1
92676	1	1
Not Reported	3	3
Grand Total	998	44

Complaints by Time of Operation





long beach airport



Long Beach Airport

4100 E. Donald Douglas Drive, Long Beach, CA 90808

www.lgb.org • lgbapt@longbeach.gov

Administration • (562) 570-2619