

Airport Advisory Commission

Alvaro Castillo
Chair

Wayne Chaney Sr.
Vice Chair

Jeffrey Anderson

Robert L. Duarte Jr.

Katie Larson

Rita Nayak

Miles Nevin

Geetanjali Reuben



Airport Management

Cynthia Guidry
Director

Juan López-Ríos
Deputy Airport Director

Ken Mason
Executive Assistant

Claudia Lewis
Manager of Administration
& Finance

Ron Reeves
Airport Operations & Facilities
Manager

Ambi Thurai
Engineering Officer

Dale Worsham
Administrative Officer

Karl Zittel
Airside Operations Officer

Matthew Brookes
Airport Properties Officer

Scott Garrett
Facilities Management Officer

Mony Chhey
Financial Services Officer

Scott Korobkin
Superintendent of Safety and
Security

Kate Kuykendall
Public Affairs Officer

Ryan McMullan
Noise & Environmental Affairs
Officer



Long Beach Airport Monthly Noise Report August 2020

COMMERCIAL AIRCRAFT LATE NIGHT ACTIVITY
LGB Current Month & Calendar Year-To-Date Statistics (10 PM- 7AM)
August 2020

August				Calendar Year-To-Date		
10PM - 11PM Activity	2020	2019	Change	2020	2019	Change
Air Carrier & Commuter Operations	997	2,925	-65.9%	12,369	21,730	-43.1%
American/Mesa/SkyWest Airlines	0	0		0	13	-100.0%
Delta/SkyWest/Compass Airlines	1	2	-50.0%	8	21	-61.9%
FedEx	0	0		0	0	
Hawaiian Airlines	0	0		1	3	-66.7%
JetBlue Airways	0	4	-90.0%	22	81	-72.8%
Southwest Airlines	0	0		0	7	-100.0%
UPS	0	0		0	0	
Subtotal 10PM-11PM	1	6	-83.3%	31	125	-75.2%
11PM- 7AM Activity	2020	2019	Change	2020	2019	Change
American/Mesa/SkyWest Airlines	0	1	-100.0%	0	10	-100.0%
Delta/SkyWest/Compass Airlines	0	0		0	4	-100.0%
FedEx	0	0		0	0	
Hawaiian Airlines	0	0		2	2	0.0%
JetBlue Airways	0	5	-100.0%	18	56	-67.9%
Southwest Airlines	0	0		0	0	
UPS	0	1	-100.0%	0	3	-100.0%
Subtotal 11PM-7AM	0	7	-100.0%	20	75	-73.3%
TOTAL	1	13	-92.3%	51	200	-74.5%

Notes:

0.1% (1 of 997) of total commercial operations occurred between 10pm - 7am.
0.03 flights - Nightly average for all late night (10:00 PM—7:00 AM) commercial flights, includes unanticipated delays.
0.0 flights - Nightly average for commercial flights after 11 PM.

AIRPORT NOISE VIOLATIONS
LGB Current Month & Calendar Year-To-Date Statistics
August 2020

August				Calendar Year-To-Date		
Air Carrier Noise Violations	2020	2019	Change	2020	2019	Change
American/Mesa Airlines	0	1	-100.0%	0	12	-100.0%
Delta/SkyWest/Compass	0	0		1	4	-75.0%
FedEx	0	0		0	0	
Hawaiian Airlines	0	0		2	2	0.0%
JetBlue Airways	0	5	-100.0%	16	59	-72.9%
Southwest Airlines	0	1	-100.0%	0	1	-100.0%
UPS	0	0		0	1	-100.0%
Subtotal	0	7	-100.0%	19	79	-75.9%
Commuter Noise Violations	2020	2019	Change	2020	2019	Change
American/SkyWest Airlines	0	0		0	0	
Delta/SkyWest/Compass	0	0		0	0	
Subtotal	0	0		0	0	
Non-Commercial Noise Violations	2020	2019	Change	2020	2019	Change
All GA, Charter & Other	16	16	0.0%	70	107	-34.6%
TOTAL	16	23	-30.4%	89	186	-52.2%
Monetary Fines	2020	2019		2020	2019	
Airport Surcharges	\$800	\$3,100		\$7,600	\$28,100	
Consent Decree	\$0	\$30,000		\$78,000	\$318,000	
TOTAL	\$800	\$33,100		\$85,600	\$346,100	

AIRPORT OPERATIONS
LGB Current Month & Calendar Year-To-Date Statistics
August 2020

August				Calendar Year-To-Date		
Airport Operations (FAA)	2020	2019	Change	2020	2019	Change
Air Carrier + Commuter Carriers	997	2,925	-65.9%	12,369	21,730	-43.1%
Air Taxi + General Aviation	28,593	27,557	3.8%	173,635	191,618	-9.4%
Military Operations	124	104	19.2%	872	844	3.3%
Total Aircraft Operations	29,714	30,586	-2.9%	186,876	214,192	-12.8%

Notes:

0.05% (16 of 29,590) of the Airport's total aircraft operations (Commercial & GA) resulted in an aircraft noise violation.

0.0% (0 of 997) of the Airport's Commercial operations (Commercial & Commuter) resulted in an aircraft noise violation.

AIRCRAFT NOISE VIOLATORS

August 2020

OWNERNAME	DATE	TIME	A/D	RWY	FLIGHT #	A/C TYPE	ORIG/DEST	SEL	LIMIT	STATUS
Unique Educational Experiences	8/2/2020	21:30:30	T	26R		C172		n/a	n/a	VIO
Textron Aviation Inc.	8/4/2020	13:55:32	D	26R		BE58		95.3	92.0	VIO
Orange County Flight Center Inc.	8/6/2020	22:29:45	T	30		C172S		n/a	n/a	VIO
BCJA LLC	8/7/2020	23:05:26	D	30		PRM1		87.2	79.0	VIO
Flexjet, LLC	8/8/2020	2:28:45	A	30		GLF6		87.3	79.0	VIO
5466 Delta LLC	8/8/2020	19:46:21	T	26R		C172		n/a	n/a	VIO
White Wing Air LLC	8/13/2020	19:36:02	T	26L		C172		n/a	n/a	VIO
Bank of Utah Trustee	8/14/2020	0:45:44	D	30		GLF5		89.7	79.0	VIO
BCJA LLC	8/17/2020	0:27:35	D	30		PRM1		83.1	79.0	VIO
Ultra Wheel Co.	8/17/2020	6:52:24	D	30		C650		95.0	90.0	VIO
Private	8/20/2020	19:14:53	T	26R		415-C		n/a	n/a	VIO
Jeffery and Weiss Holdings LLC	8/20/2020	19:45:53	T	26R		C172		n/a	n/a	VIO
Airplane Factory Inc.	8/27/2020	19:52:05	M	30		SLG2		n/a	n/a	VIO
Blue Star Management Services Corp.	8/28/2020	1:31:50	D	30		GLF5		85.5	79.0	VIO
Private	8/30/2020	16:48:31	M	30		C172		n/a	n/a	VIO
Private	8/31/2020	23:41:06	A	30		P32R		81.9	79.0	VIO

DEFINITIONS:

A/C Type — Aircraft Type

RWY — Runway

A — Arrival

SEL — SENEL — Single Event Noise Exposure Level (dBA)

ALT ENF — Alternative Enforcement

VIO—Violation

D — Departure

T—Touch and Go

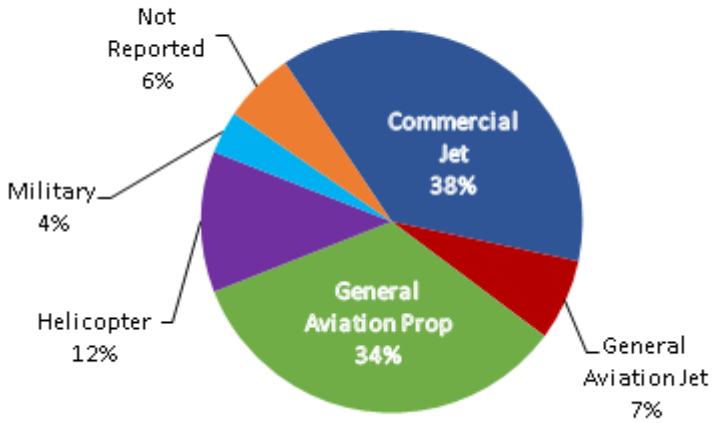
M — Missed Approach

VIO—Violation

LGB AIRCRAFT NOISE COMPLAINTS

August 2020

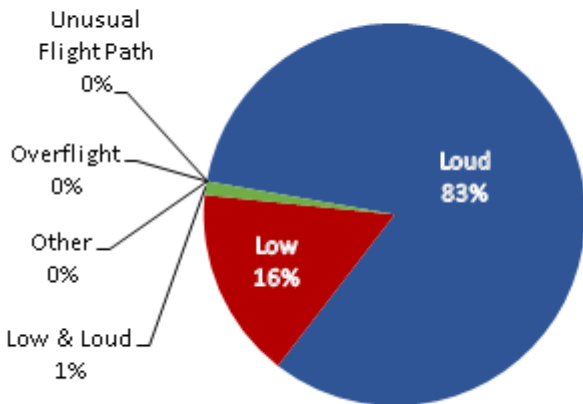
Complaints by Aircraft Types



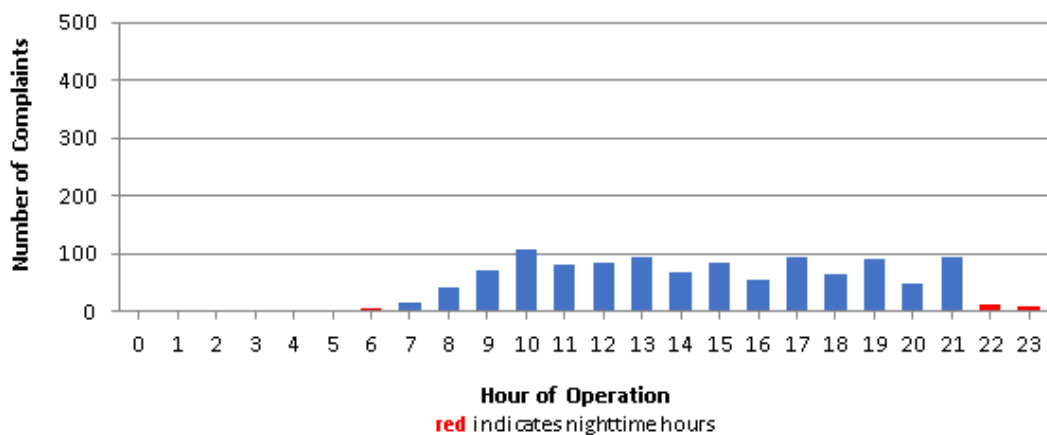
Complaints by Zip Code

Zip Code	Complaints	Units
90242	7	1
90248	2	1
90278	259	1
90712	1	1
90746	2	1
90805	4	3
90807	74	24
90808	3	2
90815	3	3
91706	1	1
92612	33	1
92615	1	1
92625	2	1
92626	198	2
92627	6	2
92646	3	1
92647	248	3
92648	192	9
92649	35	3
92651	1	1
92660	7	2
92661	6	1
92705	1	1
92869	18	1
Not Reported	26	19
Grand Total	1,133	86

Complaints by Concern



Complaints by Time of Operation





long beach airport



Long Beach Airport

4100 E. Donald Douglas Drive, Long Beach, CA 90808

www.lgb.org • lgbapt@longbeach.gov

Administration • (562) 570-2619