

Airport Advisory Commission

Alvaro Castillo
Chair

Wayne Chaney Sr.
Vice Chair

Jeffrey Anderson

Katie Larson

Rita Nayak

Miles Nevin

Geetanjali Reuben

Jeff Rowe

Mary Sophia

Airport Management

Cynthia Guidry
Director

Juan López-Ríos
Deputy Airport Director

Ken Mason
Executive Assistant

Claudia Lewis
Manager of Administration
& Finance

Ron Reeves
Airport Operations & Facilities
Manager

Ambi Thurai
Engineering Officer

Dale Worsham
Administrative Officer

Karl Zittel
Airside Operations Officer

Matthew Brookes
Airport Properties Officer

Scott Garrett
Facilities Management Officer

Mony Chhey
Financial Services Officer

Scott Korobkin
Superintendent of Safety and
Security

Kate Kuykendall
Public Affairs Officer

Ryan McMullan
Noise & Environmental Affairs
Officer



long beach
airport



Long Beach Airport Monthly Noise Report May 2020

COMMERCIAL AIRCRAFT LATE NIGHT ACTIVITY
LGB Current Month & Calendar Year-To-Date Statistics (10 PM- 7AM)
May 2020

May				Calendar Year-To-Date		
10PM - 11PM Activity	2020	2019	Change	2020	2019	Change
Air Carrier & Commuter Operations	600	2,863	-79.0%	9,392	13,048	-28.0%
American/Mesa/SkyWest Airlines	0	3	-100.0%	0	5	-100.0%
Delta/SkyWest/Compass Airlines	0	1	-100.0%	7	13	-46.2%
FedEx	0	0		0	0	
Hawaiian Airlines	0	0		1	3	-66.7%
JetBlue Airways	0	8	-100.0%	21	62	-66.1%
Southwest Airlines	0	1	-100.0%	0	4	-100.0%
UPS	0	0		0	0	
Subtotal 10PM-11PM	0	13	-100.0%	29	87	-66.7%
11PM- 7AM Activity	2020	2019	Change	2020	2019	Change
American/Mesa/SkyWest Airlines	0	2	-100.0%	0	2	-100.0%
Delta/SkyWest/Compass Airlines	0	0		0	3	-100.0%
FedEx	0	0		0	0	
Hawaiian Airlines	0	1	-100.0%	2	2	0.0%
JetBlue Airways	0	5	-100.0%	16	33	-51.5%
Southwest Airlines	0	0		0	0	
UPS	0	0		0	2	-100.0%
Subtotal 11PM-7AM	0	8	-100.0%	18	42	-57.1%
TOTAL	0	21	-100.0%	47	129	-63.6%

Notes:

0.0% (0 of 600) of total commercial operations occurred between 10pm - 7am.

0.0 flights - Nightly average for all late night (10:00 PM—7:00 AM) commercial flights, includes unanticipated delays.

0.0 flights - Nightly average for commercial flights after 11 PM.

AIRPORT NOISE VIOLATIONS						
LGB Current Month & Calendar Year-To-Date Statistics						
May 2020						
May				Calendar Year-To-Date		
Air Carrier Noise Violations	2020	2019	Change	2020	2019	Change
American/Mesa/SkyWest	0	3	-100.0%	0	4	-100.0%
Delta/SkyWest/Compass	0	0		1	2	-50.0%
FedEx	0	0		0	0	
Hawaiian Airlines	0	1	-100.0%	2	2	0.0%
JetBlue Airways	0	4	-100.0%	14	36	-61.1%
Southwest Airlines	0	0		0	0	
UPS	0	0		0	1	-100.0%
Subtotal	0	8	-100.0%	17	45	-62.2%
Commuter Noise Violations	2020	2019	Change	2020	2019	Change
American/SkyWest Airlines	0	0		0	0	
Delta/SkyWest/Compass	0	0		0	0	
Subtotal	0	0		0	0	
Non-Commercial Noise Violations	2020	2019	Change	2020	2019	Change
All GA, Charter & Other	1	14	-92.9%	37	61	-39.3%
TOTAL	1	22	-95.5%	54	106	-49.1%
Monetary Fines	2020	2019		2020	2019	
Airport Surcharges	\$0	\$2,700		\$6,500	\$16,300	
Consent Decree	\$0	24,000		\$72,000	\$180,000	
TOTAL	\$0	\$26,700		\$78,500	\$196,300	

AIRPORT OPERATIONS						
LGB Current Month & Calendar Year-To-Date Statistics						
May 2020						
May				Calendar Year-To-Date		
Airport Operations (FAA)	2020	2019	Change	2020	2019	Change
Air Carrier + Commuter Carriers	600	2,863	-79.0%	9,392	13,048	-28.0%
Air Taxi + General Aviation	19,808	23,362	-15.2%	98,248	112,400	-12.6%
Military Operations	111	83	33.7%	522	575	-9.2%
Total Aircraft Operations	20,519	26,308	-22.0%	108,162	126,023	-14.2%

Notes:

0.005% (1 of 20,408) of the Airport's total aircraft operations (Commercial & GA) resulted in an aircraft noise violation.

0.0% (0 of 600) of the Airport's Commercial operations (Commercial & Commuter) resulted in an aircraft noise violation.

AIRCRAFT NOISE VIOLATORS

May 2020

OWNERNAME	DATE	TIME	A/D	RWY	FLIGHT #	A/C TYPE	ORIG/DEST	SEL	LIMIT	STATUS
Venti Capital LLC	5/7/2020	0:10:09	A	30		GLF4		88	79.0	VIO

DEFINITIONS:

A/C Type — Aircraft Type

RWY — Runway

A/D— Arrival / Departure

SEL — SENEL — Single Event Noise Exposure Level (dBA)

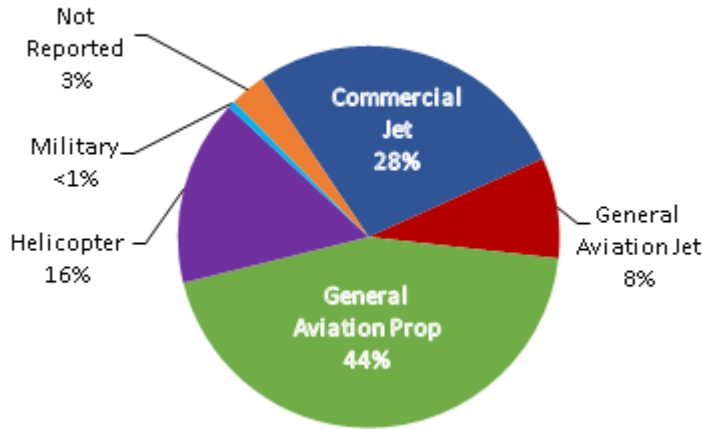
ALT ENF — Alternative Enforcement

VIO—Violation

LGB AIRCRAFT NOISE COMPLAINTS

May 2020

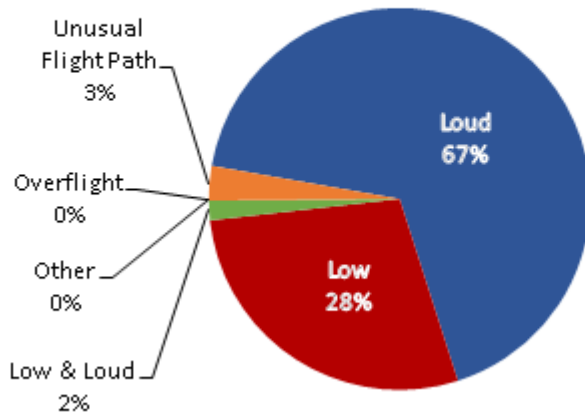
Complaints by Aircraft Types



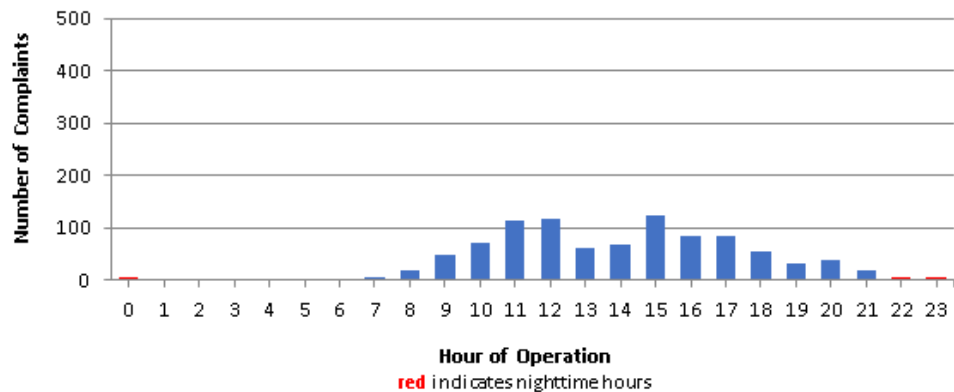
Complaints by Zip Code

Zip Code	Complaints	Units
90242	4	1
90254	7	1
90277	1	1
90278	94	2
90805	23	1
90807	31	15
90808	18	13
90815	3	2
91364	4	1
92612	233	1
92626	194	2
92627	8	1
92647	229	3
92648	92	11
92649	5	2
92656	1	1
92661	4	1
92677	1	1
92683	1	1
92869	3	1
Not Reported	7	7
Grand Total	963	69

Complaints by Concern



Complaints by Time of Operation





long beach airport



Long Beach Airport

4100 E. Donald Douglas Drive, Long Beach, CA 90808

www.lgb.org • lgbapt@longbeach.gov

Administration • (562) 570-2619