

Airport Advisory Commission

Jeffrey Anderson
Chair

Wayne Chaney Sr.
Vice Chair

Alvaro Castillo

Katie Larson

Rita Nayak

Miles Nevin

Geetanjali Reuben

Jeff Rowe

Mary Sophia

Airport Management

Cynthia Guidry
Director

Juan López-Ríos
Deputy Airport Director

Ken Mason
Executive Assistant

Claudia Lewis
Manager of Administration
& Finance

Ron Reeves
Airport Operations & Facilities
Manager

Ambi Thurai
Engineering Officer

Dale Worsham
Administrative Officer

Karl Zittel
Airside Operations Officer

Matthew Brookes
Airport Properties Officer

Scott Garrett
Facilities Management Officer

Mony Chhey
Financial Services Officer

Scott Korobkin
Superintendent of Safety and
Security

Kate Kuykendall
Public Affairs Officer

Ryan McMullan
Noise & Environmental Affairs
Officer



long beach
airport



Long Beach Airport Monthly Noise Report August 2019

COMMERCIAL AIRCRAFT LATE NIGHT ACTIVITY
LGB Current Month & Calendar Year-To-Date Statistics (10 PM- 7AM)
August 2019

August				Calendar Year-To-Date		
10PM - 11PM Activity	2019	2018	Change	2019	2018	Change
Air Carrier & Commuter Operations	2,925	3,050	-4.1%	21,730	24,479	-11.2%
American/Mesa/SkyWest Airlines	0	2	-100.0%	13	29	-55.2%
Delta/SkyWest/Compass Airlines	2	2	0.0%	21	15	40.0%
FedEx	0	0		0	0	
Hawaiian Airlines	0	0		3	0	300.0%
JetBlue Airways	4	36	-88.9%	81	269	-69.9%
Southwest Airlines	0	0		7	9	-22.2%
UPS	0	0		0	0	
Subtotal 10PM-11PM	6	40	-85.0%	125	322	-61.2%
11PM- 7AM Activity	2019	2018	Change	2019	2018	Change
American/Mesa/SkyWest Airlines	1	8	-87.5%	10	15	-33.3%
Delta/SkyWest/Compass Airlines	0	0		4	5	-20.0%
FedEx	0	0		0	0	
Hawaiian Airlines	0	1	-100.0%	2	1	100.0%
JetBlue Airways	5	27	-81.5%	56	160	-65.0%
Southwest Airlines	0	0		0	0	
UPS	1	0	100.0%	3	0	300.0%
Subtotal 11PM-7AM	7	36	-80.6%	75	181	-58.6%
TOTAL	13	76	-82.9%	200	503	-60.2%

Notes:

0.4% (13 of 2,925) of total commercial operations occurred between 10pm - 7am.

0.4 flights - Nightly average for all late night (10:00 PM—7:00 AM) commercial flights, includes unanticipated delays.

0.2 flights - Nightly average for commercial flights after 11 PM.

Of the 13 Late-Night Operations, 39% were due to poor weather conditions, 31% were due to unknown reasons, 15% were due to air traffic control conditions and 15% were due to mechanical issues.

AIRPORT NOISE VIOLATIONS						
LGB Current Month & Calendar Year-To-Date Statistics						
August 2019						
August				Calendar Year-To-Date		
Air Carrier Noise Violations	2019	2018	Change	2019	2018	Change
American/Mesa Airlines	1	7	-85.7%	12	17	-29.4%
Delta/SkyWest/Compass	0	0		4	5	-20.0%
FedEx	0	0		0	0	
Hawaiian Airlines	0	1	-100.0%	2	1	100.0%
JetBlue Airways	5	28	-82.1%	59	189	-68.8%
Southwest Airlines	1	0	100.0%	1	0	100.0%
UPS	0	0		1	0	100.0%
Subtotal	7	36	-80.6%	79	212	-62.7%
Commuter Noise Violations	2019	2018	Change	2019	2018	Change
American/SkyWest Airlines	0	0		0	0	
Delta/SkyWest/Compass	0	0		0	0	
Subtotal	0	0		0	0	
Non-Commercial Noise Violations	2019	2018	Change	2019	2018	Change
All GA, Charter & Other	16	6	166.7%	107	86	24.4%
TOTAL	23	42	-45.2%	186	298	-37.6%
Monetary Fines	2019	2018		2019	2018	
Airport Surcharges	\$3,100	\$10,500		\$28,100	\$54,900	
Consent Decree	\$30,000	\$150,000		\$318,000	\$864,000	
TOTAL	\$33,100	\$160,500		\$346,100	\$918,900	

AIRPORT OPERATIONS						
LGB Current Month & Calendar Year-To-Date Statistics						
August 2019						
August				Calendar Year-To-Date		
Airport Operations (FAA)	2019	2018	Change	2019	2018	Change
Air Carrier + Commuter Carriers	2,925	3,050	-4.1%	21,730	24,479	-11.2%
Air Taxi + General Aviation	27,557	20,343	35.5%	191,618	157,823	21.4%
Military Operations	104	99	5.1%	844	1,048	-19.5%
Total Aircraft Operations	30,586	23,492	30.2%	214,192	183,350	16.8%

Notes:

0.08% (26 of 30,482) of the Airport's total aircraft operations (Commercial & GA) resulted in an aircraft noise violation.
0.2% (7 of 2,925) of the Airport's Commercial operations (Commercial & Commuter) resulted in an aircraft noise violation.

AIRCRAFT NOISE VIOLATORS

August 2019

OWNERNAME	DATE	TIME	A/D	RWY	FLIGHT #	A/C TYPE	ORIG/DEST	SEL	LIMIT	STATUS
JetBlue Airways	8/1/2019	0:07:44	D	30	JBU504	A320	BOS	94.8	79.0	VIO + Alt Enf
JetBlue Airways	8/1/2019	4:17:45	A	30	JBU1013	A320	JFK	92.8	79.0	VIO + Alt Enf
Southwest Airlines	8/2/2019	16:59:28	D	26R	SWA6156	B737	LAS	98.4	92.0	VIO
American Airlines	8/2/2019	23:14:33	A	30	ASH5719	CRJ9	PHX	91.1	79.0	VIO
Express Transportation Corp.	8/5/2019	1:33:44	A	30		CL60		88.3	79.0	VIO
Otis M C Trustee	8/5/2019	7:59:07	D	26R		PRM1		96.8	92.0	VIO
Pegasus Elite Aviation LLC	8/6/2019	0:36:09	A	30		BE9L		82.4	79.0	VIO
JetBlue Airways	8/9/2019	0:56:05	A	30	JBU1013	A320	JFK	92.8	79.0	VIO + Alt Enf
Freedom Air LLC	8/9/2019	12:26:55	A	26R		EPIC		91.3	88.0	VIO
Ken Sale Resource Inc	8/9/2019	14:12:05	D	30		GLF3		105.6	102.5	VIO
Whital Enterprises LLC	8/9/2019	23:09:38	A	30		TBM7		90.3	79.0	VIO
Execufight Inc	8/11/2019	0:27:53	D	30		GLF4		88.9	79.0	VIO
Skechers USA Inc	8/12/2019	2:48:25	A	30		GLEX		87.3	79.0	VIO
Malto Aviation LLC	8/12/2019	23:05:12	D	30		C172		81.3	79.0	VIO
Valley Logistics LLC	8/12/2019	23:07:42	A	30		E55P		87.9	79.0	VIO
So Cal Leasing LLC	8/12/2019	23:54:31	D	30		P28A		84.7	79.0	VIO
JetTran LLC	8/13/2019	0:07:13	D	30		GLF4		91.8	79.0	VIO
IRG Wings LLC	8/16/2019	0:17:27	A	30		GALX		82.6	79.0	VIO
Core Projects Inc.	8/17/2019	23:38:15	D	30		H25B		87.9	79.0	VIO
JetBlue Airways	8/19/2019	3:40:24	A	30	JBU1013	A320	JFK	93.2	79.0	VIO + Alt Enf
Valley Logistics LLC	8/19/2019	23:07:01	A	30		E55P		85.0	79.0	VIO
Air Prestigio LLC	8/24/2019	1:30:36	D	30		GLF4		92.1	79.0	VIO
JetBlue Airways	8/29/2019	23:42:19	A	30	JBU1925	A320	SJC	94.0	79.0	VIO + Alt Enf

DEFINITIONS:

A/C Type — Aircraft Type

RWY — Runway

A/D— Arrival / Departure

SEL — SENEL — Single Event Noise Exposure Level (dBA)

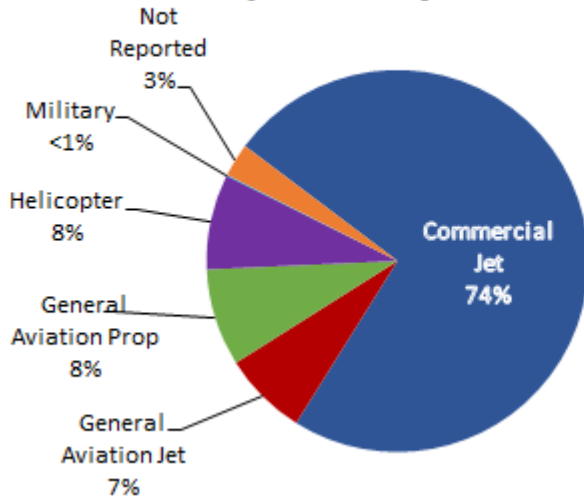
ALT ENF — Alternative Enforcement

VIO—Violation

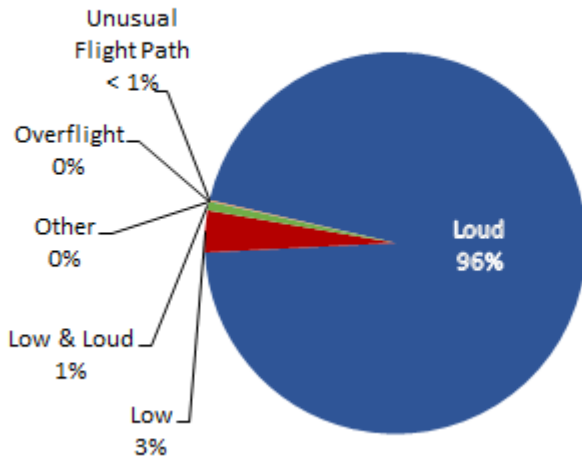
LGB AIRCRAFT NOISE COMPLAINTS

August 2019

Complaints by Aircraft Types



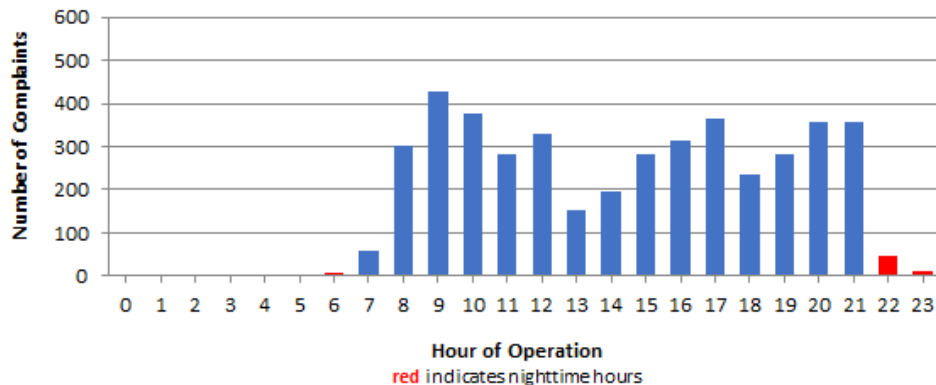
Complaints by Concern



Complaints by Zip Code

Zip Code	Complaints	Units
90248	2	1
90278	442	3
90713	1	1
90731	2	1
90740	3	2
90805	45	1
90807	18	3
90808	6	3
90815	2	2
92612	48	1
92615	14	2
92626	627	1
92627	53	2
92646	4	1
92647	867	6
92648	1,439	16
92649	750	6
92651	4	1
92660	10	5
92661	1	1
92662	8	5
92676	3	1
92677	3	2
92807	32	1
92867	1	1
Not Reported	5	5
Grand Total	4,390	74

Complaints by Time of Operation





long beach airport



Long Beach Airport

4100 E. Donald Douglas Drive, Long Beach, CA 90808

www.lgb.org • lgbapt@longbeach.gov

Administration • (562) 570-2619