

Airport Advisory Commission

Jeffrey Anderson
Chair

Wayne Chaney Sr.
Vice Chair

Alvaro Castillo

Katie Larson

Rita Nayak

Miles Nevin

Geetanjali Reuben

Jeff Rowe

Mary Sophia

Airport Management

Cynthia Guidry
Director

Juan López-Ríos
Deputy Airport Director

Ken Mason
Executive Assistant

Claudia Lewis
Manager of Administration
& Finance

Ron Reeves
Airport Operations & Facilities
Manager

Ambi Thurai
Engineering Officer

Dale Worsham
Administrative Officer

Karl Zittel
Airside Operations Officer

Matthew Brookes
Airport Properties Officer

Scott Garrett
Facilities Management Officer

Mony Chhey
Financial Services Officer

Scott Korobkin
Superintendent of Safety and
Security

Kate Kuykendall
Public Affairs Officer

Ryan McMullan
Noise & Environmental Affairs
Officer



long beach
airport



Long Beach Airport Monthly Noise Report July 2019

AIRPORT NOISE VIOLATIONS						
LGB Current Month & Calendar Year-To-Date Statistics						
July 2019						
July				Calendar Year-To-Date		
Air Carrier Noise Violations	2019	2018	Change	2019	2018	Change
American/Mesa Airlines	4	4	0.0%	11	10	10.0%
Delta/SkyWest/Compass	1	0	100.0%	4	5	-20.0%
FedEx	0	0		0	0	
Hawaiian Airlines	0	0		2	0	200.0%
JetBlue Airways	10	19	-47.4%	54	161	-66.5%
Southwest Airlines	0	0		0	0	
UPS	0	0		1	0	100.0%
Subtotal	15	23	-34.8%	72	176	-59.1%
Commuter Noise Violations	2019	2018	Change	2019	2018	Change
American/SkyWest Airlines	0	0		0	0	
Delta/SkyWest/Compass	0	0		0	0	
Subtotal	0	0		0	0	
Non-Commercial Noise Violations	2019	2018	Change	2019	2018	Change
All GA, Charter & Other	11	14	-21.4%	91	80	13.8%
TOTAL	26	37	-29.7%	163	256	-36.3%
Monetary Fines	2019	2018		2019	2018	
Airport Surcharges	\$4,500	\$7,100		\$25,000	\$44,400	
Consent Decree	\$60,000	\$72,000		\$288,000	\$714,000	
TOTAL	\$64,500	\$79,100		\$313,000	\$758,400	

AIRPORT OPERATIONS						
LGB Current Month & Calendar Year-To-Date Statistics						
July 2019						
July				Calendar Year-To-Date		
Airport Operations (FAA)	2019	2018	Change	2019	2018	Change
Air Carrier + Commuter Carriers	2,933	3,023	-3.0%	18,805	21,429	-12.2%
Air Taxi + General Aviation	27,068	18,459	46.6%	164,061	137,480	19.3%
Military Operations	73	112	-34.8%	740	949	-22.0%
Total Aircraft Operations	30,074	21,594	39.3%	183,606	159,858	14.9%

Notes:

0.1% (26 of 30,001) of the Airport's total aircraft operations (Commercial & GA) resulted in an aircraft noise violation.
0.5% (12 of 2,933) of the Airport's Commercial operations (Commercial & Commuter) resulted in an aircraft noise violation.

AIRCRAFT NOISE VIOLATORS

July 2019

OWNERNAME	DATE	TIME	A/D	RWY	FLIGHT #	A/C TYPE	ORIG/DEST	SEL	LIMIT	STATUS
JetBlue Airways	7/1/2019	23:52:16	A	30	JBU347	A320	OAK	93	79.0	VIO + Alt Enf
JetBlue Airways	7/7/2019	1:47:12	A	30	JBU1013	A320	JFK	92.5	79.0	VIO + Alt Enf
Private	7/7/2019	18:42:01	D	26R		BE95		94.2	92.0	VIO
Rose Valley Leasing	7/10/2019	23:47:40	A	30		C25A		88.6	79.0	VIO
American Airlines	7/12/2019	23:18:14	A	30	ASH5719	CRJ9	PHX	90.1	79.0	VIO
Delta / SkyWest / Compass Airlines	7/13/2019	0:05:25	A	30	SKW4845	E75L	SLC	91.8	79.0	VIO
JetBlue Airways	7/13/2019	1:19:22	A	30	JBU1925	A320	SJC	92.9	79.0	VIO + Alt Enf
JetBlue Airways	7/13/2019	2:28:13	A	30	JBU531	A320	LAS	92.6	79.0	VIO + Alt Enf
Riverside Pilots Inc.	7/15/2019	23:06:38	D	30		C172		84.5	79.0	VIO
National Training I LLC	7/15/2019	23:09:08	D	30		C172		81.7	79.0	VIO
Projects Inc.	7/16/2019	0:46:03	A	30		H25B		89.1	79.0	VIO
Private	7/17/2019	11:47:21	A	26R		C172		90.9	88.0	VIO
JetBlue Airways	7/17/2019	23:32:10	A	26R	JBU405	A320	BOS	93.4	N/A	VIO + Alt Enf
Premier Jets Inc	7/18/2019	22:36:59	D	30		LJ35		96	90.0	VIO
JetBlue Airways	7/19/2019	0:09:27	A	30	JBU1417	A320	AUS	92.8	79.0	VIO + Alt Enf
Textron Financial Corp.	7/20/2019	22:48:31	A	30		C56X		92.2	90.0	VIO
JetBlue Airways	7/21/2019	23:30:19	A	30	JBU347	A320	OAK	92.8	79.0	VIO + Alt Enf
JetBlue Airways	7/22/2019	23:57:46	A	30	JBU1013	A320	JFK	92.9	79.0	VIO + Alt Enf
Something from Nothing 2 LLC	7/25/2019	3:07:44	A	30		FA50		89.2	79.0	VIO
American Airlines	7/25/2019	23:11:19	A	30	ASH5719	CRJ9	PHX	91.3	79.0	VIO
American Airlines	7/26/2019	23:19:08	A	30	ASH5719	CRJ9	PHX	90.9	79.0	VIO
Private	7/26/2019	23:27:24	D	30		C172		82.3	79.0	VIO
Zulu Aviation	7/29/2019	0:30:26	D	30		SR22		81.9	79.0	VIO
JetBlue Airways	7/30/2019	0:56:56	A	30	JBU679	A320	LAS	92.9	79.0	VIO + Alt Enf
JetBlue Airways	7/31/2019	23:05:20	A	30	JBU405	A320	BOS	93.2	79.0	VIO + Alt Enf
American Airlines	7/31/2019	23:33:19	A	30	ASH5719	CRJ9	PHX	91.2	79.0	VIO

DEFINITIONS:

A/C Type — Aircraft Type

RWY — Runway

A/D— Arrival / Departure

SEL — SENEL — Single Event Noise Exposure Level (dBA)

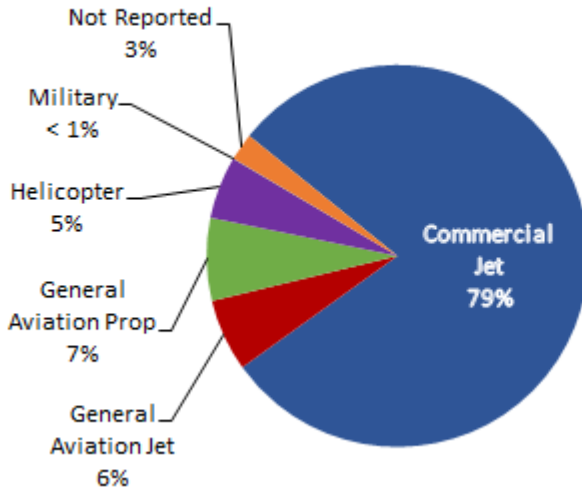
ALT ENF — Alternative Enforcement

VIO—Violation

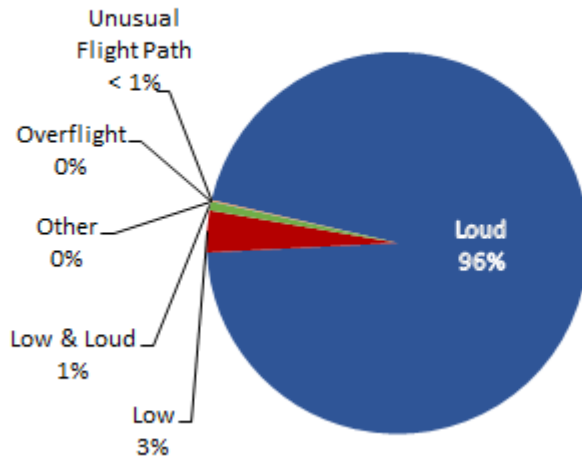
LGB AIRCRAFT NOISE COMPLAINTS

July 2019

Complaints by Aircraft Types



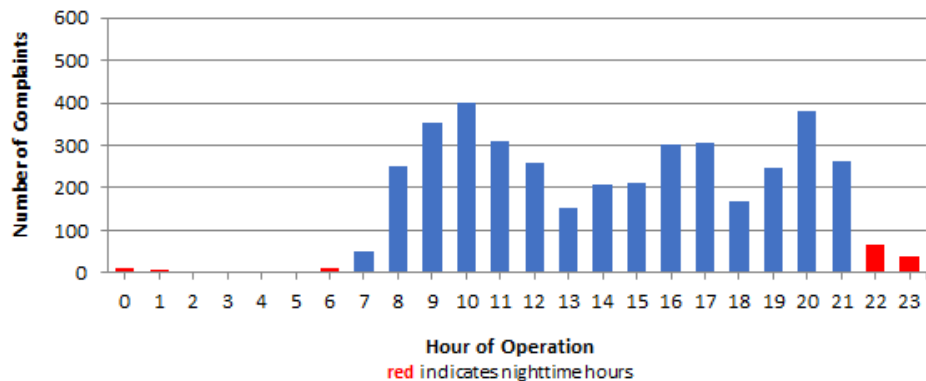
Complaints by Concern



Complaints by Zip Code

Zip Code	Complaints	Units
90248	11	1
90278	305	4
90731	1	1
90740	7	1
90805	9	1
90807	27	6
90808	7	4
90815	3	3
92612	89	1
92626	433	1
92627	39	4
92646	4	1
92647	933	6
92648	1,710	21
92649	331	8
92651	4	2
92660	22	8
92661	1	1
92662	16	5
92663	7	3
92676	5	1
92677	4	1
92807	16	1
92869	4	4
Not Reported	5	5
Grand Total	3,993	94

Complaints by Time of Operation





long beach airport



Long Beach Airport

4100 E. Donald Douglas Drive, Long Beach, CA 90808

www.lgb.org • lgbapt@longbeach.gov

Administration • (562) 570-2619