

## Airport Advisory Commission

**Jeffrey Anderson**  
Chair

**Wayne Chaney Sr.**  
Vice Chair

**Alvaro Castillo**

**Katie Larson**

**Rita Nayak**

**Miles Nevin**

**Geetanjali Reuben**

**Jeff Rowe**

**Mary Sophiea**

## Airport Management

**Cynthia Guidry**  
Airport Director

**Juan López-Rios**  
Deputy Airport Director

**Ken Mason**  
Executive Assistant

**Claudia Lewis**  
Manager of Administration  
& Finance

**Ron Reeves**  
Airport Operations & Facilities  
Manager

**Ambi Thurai**  
Engineering Officer

**Dale Worsham**  
Administrative Officer

**Karl Zittel**  
Airside Operations Officer

**Matthew Brookes**  
Airport Properties Officer

**Scott Garrett**  
Facilities Management Officer

**Mony Chhey**  
Financial Services Officer

**Scott Korobkin**  
Superintendent of Safety and  
Security

**Ryan McMullan**  
Noise & Environmental Affairs  
Officer



**long beach**  
airport



# Long Beach Airport Monthly Noise Report June 2019

**COMMERCIAL AIRCRAFT LATE NIGHT ACTIVITY**  
**LGB Current Month & Calendar Year-To-Date Statistics (10 PM- 7AM)**  
**June 2019**

				June			Calendar Year-To-Date		
10PM - 11PM Activity	2019	2018	Change	2019	2018	Change			
<b>Air Carrier &amp; Commuter Operations</b>	<b>2,824</b>	<b>2,969</b>	<b>-4.9%</b>	<b>15,872</b>	<b>18,406</b>	<b>-13.8%</b>			
American/Mesa/SkyWest Airlines	4	2	100.0%	9	21	-57.1%			
Delta/SkyWest/Compass Airlines	5	2	150.0%	18	13	38.5%			
FedEx	0	0		0	0				
Hawaiian Airlines	0	0		3	0	300.0%			
JetBlue Airways	5	22	-77.3%	67	208	-67.8%			
Southwest Airlines	1	1	0.0%	5	8	-37.5%			
UPS	0	0		0	0				
<b>Subtotal 10PM-11PM</b>	<b>15</b>	<b>27</b>	<b>-44.4%</b>	<b>102</b>	<b>250</b>	<b>-59.2%</b>			
<b>11PM- 7AM Activity</b>	<b>2019</b>	<b>2018</b>	<b>Change</b>	<b>2019</b>	<b>2018</b>	<b>Change</b>			
American/Mesa/SkyWest Airlines	3	1	200.0%	5	3	66.7%			
Delta/SkyWest/Compass Airlines	0	1	-100.0%	3	5	-40.0%			
FedEx	0	0		0	0				
Hawaiian Airlines	0	0		2	0	200.0%			
JetBlue Airways	8	16	-50.0%	41	120	-65.8%			
Southwest Airlines	0	0		0	0				
UPS	0	0		2	0	200.0%			
<b>Subtotal 11PM-7AM</b>	<b>11</b>	<b>18</b>	<b>-38.9%</b>	<b>53</b>	<b>128</b>	<b>-58.6%</b>			
<b>TOTAL</b>	<b>26</b>	<b>45</b>	<b>-42.2%</b>	<b>155</b>	<b>378</b>	<b>-59.0%</b>			

Notes:

0.9% (26 of 2,824) of total commercial operations occurred between 10pm - 7am.

0.9 flights - Nightly average for all late night (10:00 PM—7:00 AM) commercial flights, includes unanticipated delays.

0.4 flights - Nightly average for commercial flights after 11 PM.

Of the 26 Late-Night Operations, 42% were due to unknown reasons, 39% were due to mechanical issues, 12% were due to air traffic control conditions, 4% occurred during the five-minute grace period and 4% were due to staffing-related issues.

<b>AIRPORT NOISE VIOLATIONS</b>						
<b>LGB Current Month &amp; Calendar Year-To-Date Statistics</b>						
<b>June 2019</b>						
<b>June</b>				<b>Calendar Year-To-Date</b>		
<b>Air Carrier Noise Violations</b>	<b>2019</b>	<b>2018</b>	<b>Change</b>	<b>2019</b>	<b>2018</b>	<b>Change</b>
American/Mesa Airlines	3	1	200.0%	7	6	16.7%
Delta/SkyWest/Compass	1	1	0.0%	3	5	-40.0%
FedEx	0	0		0	0	
Hawaiian Airlines	0	0		2	0	200.0%
JetBlue Airways	8	18	-55.6%	44	142	-69.0%
Southwest Airlines	0	0		0	0	
UPS	0	0		1	0	100.0%
<b>Subtotal</b>	<b>12</b>	<b>20</b>	<b>-40.0%</b>	<b>57</b>	<b>153</b>	<b>-62.7%</b>
<b>Commuter Noise Violations</b>	<b>2019</b>	<b>2018</b>	<b>Change</b>	<b>2019</b>	<b>2018</b>	<b>Change</b>
American/SkyWest Airlines	0	0		0	0	
Delta/SkyWest/Compass	0	0		0	0	
<b>Subtotal</b>	<b>0</b>	<b>0</b>		<b>0</b>	<b>0</b>	
<b>Non-Commercial Noise Violations</b>	<b>2019</b>	<b>2018</b>	<b>Change</b>	<b>2019</b>	<b>2018</b>	<b>Change</b>
All GA, Charter & Other	19	9	111.1%	80	66	21.2%
<b>TOTAL</b>	<b>31</b>	<b>29</b>	<b>6.9%</b>	<b>137</b>	<b>219</b>	<b>-37.4%</b>
<b>Monetary Fines</b>	<b>2019</b>	<b>2018</b>		<b>2019</b>	<b>2018</b>	
Airport Surcharges	\$4,200	\$6,100		\$20,500	\$37,300	
Consent Decree	\$48,000	\$84,000		\$228,000	\$642,000	
<b>TOTAL</b>	<b>\$52,200</b>	<b>\$90,100</b>		<b>\$248,500</b>	<b>\$679,300</b>	

<b>AIRPORT OPERATIONS</b>						
<b>LGB Current Month &amp; Calendar Year-To-Date Statistics</b>						
<b>June 2019</b>						
<b>June</b>				<b>Calendar Year-To-Date</b>		
<b>Airport Operations (FAA)</b>	<b>2019</b>	<b>2018</b>	<b>Change</b>	<b>2019</b>	<b>2018</b>	<b>Change</b>
Air Carrier + Commuter Carriers	2,824	2,969	-4.9%	15,872	18,406	-13.8%
Air Taxi + General Aviation	24,593	18,798	30.8%	136,993	119,021	15.1%
Military Operations	92	136	-32.4%	667	837	-20.3%
<b>Total Aircraft Operations</b>	<b>27,509</b>	<b>21,903</b>	<b>25.6%</b>	<b>153,532</b>	<b>138,264</b>	<b>11.0%</b>

Notes:

0.1% (31 of 27,417) of the Airport's total aircraft operations (Commercial & GA) resulted in an aircraft noise violation.  
0.4% (12 of 2,824) of the Airport's Commercial operations (Commercial & Commuter) resulted in an aircraft noise violation.

# AIRCRAFT NOISE VIOLATORS

## June 2019

OWNERNAME	DATE	TIME	A/D	RWY	FLIGHT #	A/C TYPE	ORIG/DEST	SEL	LIMIT	STATUS
Private	6/1/2019	11:56:05	A	26R		AEST		90.2	88.0	VIO
JWJ Leasing LLC	6/1/2019	23:09:43	A	30		CL30		89.6	79.0	VIO
Sierra Systems	6/2/2019	20:32:51	A	26R		C337		96.5	88.0	VIO
7861Y LLC	6/3/2019	14:31:04	A	26R		PA30		92.3	88.0	VIO
Wings & Wheels LLC	6/4/2019	2:36:02	D	12		C750		83.7	79.0	VIO
MF Aviation LLC	6/5/2019	23:15:04	A	30		C560		85.0	79.0	VIO
JetBlue Airways	6/6/2019	0:42:34	A	30	JBU1013	A320	JFK	92.9	79.0	VIO + Alt Enf
MLW Aviation LLC	6/7/2019	0:35:21	D	30		B752		92.8	79.0	VIO
Private	6/7/2019	23:39:52	A	30		PA44		81.1	79.0	VIO
Aeronaves T.S.M.	6/13/2019	17:32:59	D	30		DC91		106.7	102.5	VIO
JetBlue Airways	6/13/2019	23:39:16	A	26R	JBU405	A320	BOS	93.5	N/A	VIO + Alt Enf
Bank of Utah Trustee	6/14/2019	17:20:35	A	26R		GA8		90.1	88.0	VIO
JetBlue Airways	6/14/2019	23:59:47	A	26R	JBU679	A320	LAS	93.7	N/A	VIO + Alt Enf
Private	6/16/2019	2:07:28	D	30		M20P		84.2	79.0	VIO
Athene Noctua LLC	6/16/2019	23:12:00	A	30		GLF4		88.4	79.0	VIO
Go Far Aviation LLC	6/17/2019	2:59:01	A	30		C525		85.8	79.0	VIO
BCJA LLC	6/17/2019	4:12:27	D	12		PRM1		88.8	79.0	VIO
NetJets Inc.	6/19/2019	22:31:01	D	30		GLEX		93.7	90.0	VIO
Delta / SkyWest / Compass Airlines	6/20/2019	22:12:18	A	30		E75L		93.0	90.0	VIO
JetBlue Airways	6/20/2019	23:17:43	D	30	JBU504	A320	BOS	96.3	79.0	VIO + Alt Enf
Eight Ball Flying Club Inc.	6/21/2019	0:29:59	D	30		C182		81.2	79.0	VIO
Stealthlear	6/23/2019	23:15:06	D	30		LJ45		84.2	79.0	VIO
JetBlue Airways	6/24/2019	23:55:40	A	30	JBU1925	A320	SJC	92.4	79.0	VIO + Alt Enf
JetBlue Airways	6/25/2019	23:16:35	D	30	JBU14	A320	JFK	95.2	79.0	VIO + Alt Enf
Deer Jet Co. Ltd.	6/25/2019	23:36:01	D	30		GLF6		86.9	79.0	VIO
American Airlines	6/25/2019	23:36:14	A	30	ASH5719	CRJ9	PHX	92.4	79.0	VIO
JetBlue Airways	6/26/2019	0:02:10	A	30	JBU347	A320	OAK	92.4	79.0	VIO + Alt Enf
JC Air Academy Inc.	6/29/2019	1:14:05	D	30		C172		84.4	79.0	VIO
American Airlines	6/30/2019	23:10:45	A	30	ASH5896	CRJ9	PHX	91.6	79.0	VIO

## AIRCRAFT NOISE VIOLATORS

### June 2019

OWNERNAME	DATE	TIME	A/D	RWY	FLIGHT #	A/C TYPE	ORIG/DEST	SEL	LIMIT	STATUS
American Airlines	6/30/2019	23:41:29	D	30	ASH5896	CRJ9	PHX	87.7	79.0	VIO
JetBlue Airways	6/30/2019	23:57:17	A	30	JBU531	A320	SLC	93.8	79.0	VIO + Alt Enf

**DEFINITIONS:**

**A/C Type** — Aircraft Type

**RWY** — Runway

**A/D**— Arrival / Departure

**SEL** — SENEL — Single Event Noise Exposure Level (dBA)

**ALT ENF** — Alternative Enforcement

**VIO**—Violation

## AIR CARRIER NOISE BUDGET PERFORMANCE

### July 2018 - June 2019

RMT #	NOISE BUDGET	ACTUAL	PERCENT BUDGET USED
9	70.7	52.1	73.7%
10	84.6	75.2	88.9%

**DEFINITIONS:**

**RMT** — Remote Monitoring Terminal

## TOTAL NOISE BUDGET PERFORMANCE

### July 2018 - June 2019

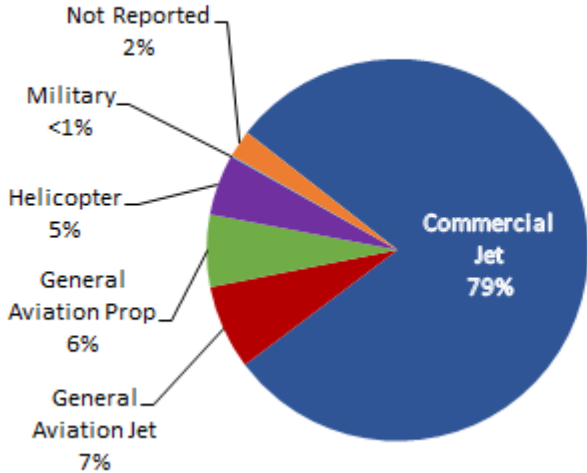
RMT #	NOISE BUDGET	ACTUAL	PERCENT BUDGET USED
9	102.7	61.3	59.7%
10	120.9	87.7	72.5%

Source: AAAI Staff Calculations

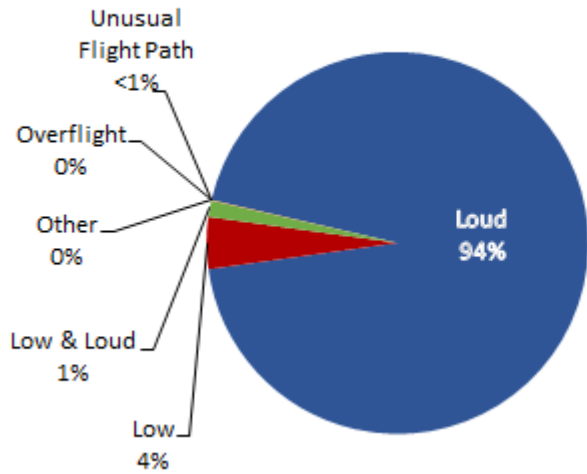
# LGB AIRCRAFT NOISE COMPLAINTS

June 2019

## Complaints by Aircraft Types



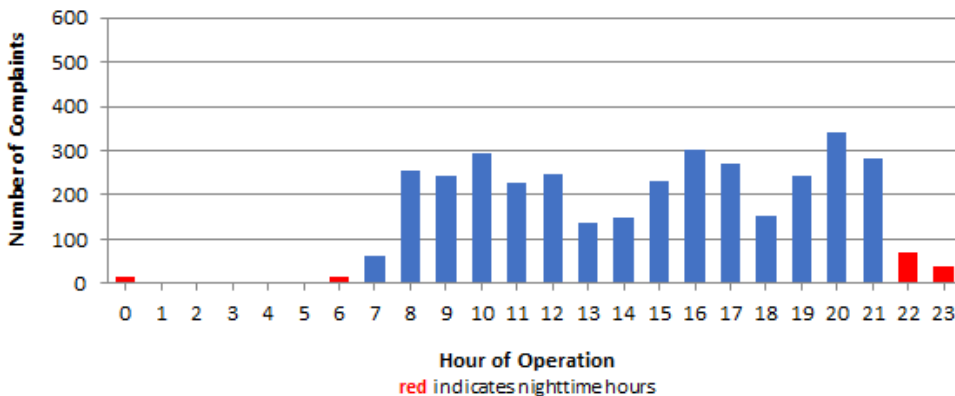
## Complaints by Concern



## Complaints by Zip Code

Zip Code	Complaints	Units
90278	175	3
90501	1	1
90504	1	1
90712	1	1
90731	1	1
90740	13	1
90755	3	2
90803	3	2
90805	23	2
90806	1	1
90807	32	12
90808	11	7
90814	1	1
90815	3	2
92612	43	1
92626	418	1
92627	12	5
92629	5	1
92646	10	1
92647	963	6
92648	1,459	23
92649	347	5
92651	3	1
92656	1	1
92660	28	8
92662	10	2
92663	5	2
92677	7	1
Not Reported	2	2
<b>Grand Total</b>	<b>3,582</b>	<b>71</b>

## Complaints by Time of Operation





# long beach airport



## Long Beach Airport

4100 E. Donald Douglas Drive, Long Beach, CA 90808

[www.lgb.org](http://www.lgb.org) • [lgbapt@longbeach.gov](mailto:lgbapt@longbeach.gov)

Administration • (562) 570-2619