

## Airport Advisory Commission

**Jeffrey Anderson**  
Chair

**Wayne Chaney Sr.**  
Vice Chair

**Alvaro Castillo**

**Katie Larson**

**Rita Nayak**

**Miles Nevin**

**Geetanjali Reuben**

**Jeff Rowe**

**Mary Sophiea**

## Airport Management

**Cynthia Guidry**  
Director

**Juan López-Rios**  
Deputy Airport Director

**Ken Mason**  
Executive Assistant

**Claudia Lewis**  
Manager of Administration  
& Finance

**Ron Reeves**  
Airport Operations & Facilities  
Manager

**Ambi Thurai**  
Engineering Officer

**Dale Worsham**  
Administrative Officer

**Karl Zittel**  
Airsides Operations Officer

**Matthew Brookes**  
Airport Properties Officer

**Scott Garrett**  
Facilities Management Officer

**Mony Chhey**  
Financial Services Officer

**Scott Korobkin**  
Superintendent of Safety and  
Security

**Kate Kuykendall**  
Public Affairs Officer

**Ryan McMullan**  
Noise & Environmental Affairs  
Officer



# Long Beach Airport Monthly Noise Report December 2019

**COMMERCIAL AIRCRAFT LATE NIGHT ACTIVITY**  
**LGB Current Month & Calendar Year-To-Date Statistics (10 PM- 7AM)**  
**December 2019**

December				Calendar Year-To-Date		
10PM - 11PM Activity	2019	2018	Change	2019	2018	Change
<b>Air Carrier &amp; Commuter Operations</b>	<b>3,005</b>	<b>2,644</b>	<b>13.7%</b>	<b>33,236</b>	<b>34,847</b>	<b>-4.6%</b>
American/Mesa/SkyWest Airlines	0	0		15	29	-48.3%
Delta/SkyWest/Compass Airlines	2	3	-33.3%	28	22	27.3%
FedEx	0	0		0	0	
Hawaiian Airlines	2	0	200.0%	5	2	150.0%
JetBlue Airways	23	11	109.1%	128	302	-57.6%
Southwest Airlines	1	0	100.0%	10	10	0.0%
UPS	1	0	100.0%	1	1	0.0%
<b>Subtotal 10PM-11PM</b>	<b>29</b>	<b>14</b>	<b>107.1%</b>	<b>187</b>	<b>366</b>	<b>-48.9%</b>
<b>11PM- 7AM Activity</b>	<b>2019</b>	<b>2018</b>	<b>Change</b>	<b>2019</b>	<b>2018</b>	<b>Change</b>
American/Mesa/SkyWest Airlines	0	1	-100.0%	10	16	-37.5%
Delta/SkyWest/Compass Airlines	0	0		4	6	-33.0%
FedEx	0	0		1	0	100.0%
Hawaiian Airlines	1	0	100.0%	3	4	-25.0%
JetBlue Airways	16	5	220.0%	88	185	-52.4%
Southwest Airlines	0	0		0	0	
UPS	0	0		3	1	200.0%
<b>Subtotal 11PM-7AM</b>	<b>17</b>	<b>6</b>	<b>183.3%</b>	<b>109</b>	<b>212</b>	<b>-48.6%</b>
<b>TOTAL</b>	<b>46</b>	<b>20</b>	<b>130.0%</b>	<b>296</b>	<b>578</b>	<b>-48.8%</b>

Notes:

1.5% (46 of 3,005) of total commercial operations occurred between 10pm - 7am.

1.5 flights - Nightly average for all late night (10:00 PM—7:00 AM) commercial flights, includes unanticipated delays.

0.6 flights - Nightly average for commercial flights after 11 PM.

Of the 46 Late-Night Operations, 37% were due to mechanical issues, 15% were due to poor weather conditions, 15% were due to air traffic control conditions, 11% were due to staffing-related issues, 9% were due to unknown reasons, 7% were due to ferry flight operations and 7% occurred during the five-minute grace period.

<b>AIRPORT NOISE VIOLATIONS</b>						
<b>LGB Current Month &amp; Calendar Year-To-Date Statistics</b>						
<b>December 2019</b>						
	<b>December</b>			<b>Calendar Year-To-Date</b>		
<b>Air Carrier Noise Violations</b>	<b>2019</b>	<b>2018</b>	<b>Change</b>	<b>2019</b>	<b>2018</b>	<b>Change</b>
American/Mesa Airlines	0	1	-100.0%	12	18	-33.3%
Delta/SkyWest/Compass	0	0		4	5	-20.0%
FedEx	0	0		1	0	100.0%
Hawaiian Airlines	0	0		2	4	-50.0%
JetBlue Airways	20	7	185.7%	96	212	-54.7%
Southwest Airlines	0	0		1	0	100.0%
UPS	0	0		1	1	0.0%
<b>Subtotal</b>	<b>20</b>	<b>8</b>	<b>150.0%</b>	<b>117</b>	<b>240</b>	<b>-51.3%</b>
<b>Commuter Noise Violations</b>	<b>2019</b>	<b>2018</b>	<b>Change</b>	<b>2019</b>	<b>2018</b>	<b>Change</b>
American/SkyWest Airlines	0	0		0	0	
Delta/SkyWest/Compass	0	0		0	0	
<b>Subtotal</b>	<b>0</b>	<b>0</b>		<b>0</b>	<b>0</b>	
<b>Non-Commercial Noise Violations</b>	<b>2019</b>	<b>2018</b>	<b>Change</b>	<b>2019</b>	<b>2018</b>	<b>Change</b>
All GA, Charter & Other	14	16	-12.5%	150	138	8.7%
<b>TOTAL</b>	<b>34</b>	<b>24</b>	<b>41.7%</b>	<b>267</b>	<b>378</b>	<b>-29.4%</b>
<b>Monetary Fines</b>	<b>2019</b>	<b>2018</b>		<b>2019</b>	<b>2018</b>	
Airport Surcharges	\$6,100	\$3,100		\$40,100	\$65,600	
Consent Decree	\$96,000	\$24,000		\$492,000	\$984,000	
<b>TOTAL</b>	<b>\$102,100</b>	<b>\$27,100</b>		<b>\$532,100</b>	<b>\$1,049,600</b>	

<b>AIRPORT OPERATIONS</b>						
<b>LGB Current Month &amp; Calendar Year-To-Date Statistics</b>						
<b>December 2019</b>						
	<b>December</b>			<b>Calendar Year-To-Date</b>		
<b>Airport Operations (FAA)</b>	<b>2019</b>	<b>2018</b>	<b>Change</b>	<b>2019</b>	<b>2018</b>	<b>Change</b>
Air Carrier + Commuter Carriers	3,005	2,644	13.7%	33,236	34,847	-4.6%
Air Taxi + General Aviation	21,113	20,216	4.4%	287,549	238,157	20.7%
Military Operations	84	95	-11.6%	1,199	1,421	-15.6%
<b>Total Aircraft Operations</b>	<b>24,202</b>	<b>22,955</b>	<b>5.4%</b>	<b>321,984</b>	<b>274,425</b>	<b>17.3%</b>

Notes:

0.1% (34 of 24,202) of the Airport's total aircraft operations (Commercial & GA) resulted in an aircraft noise violation.  
0.7% (20 of 3,005) of the Airport's Commercial operations (Commercial & Commuter) resulted in an aircraft noise violation.

# AIRCRAFT NOISE VIOLATORS

## December 2019

OWNERNAME	DATE	TIME	A/D	RWY	FLIGHT #	A/C TYPE	ORIG/DEST	SEL	LIMIT	STATUS
Sunrider Corporation	12/1/2019	14:48:17	D	30		MD87		104.4	101.5	VIO
H&S Air LLC	12/1/2019	23:25:16	A	30		GLF4		81.1	79.0	VIO
A & L Hawker LLC	12/2/2019	23:23:14	A	30		BE40		82.4	79.0	VIO
Business Jet Solutions	12/2/2019	23:41:14	A	30		CL30		89.1	79.0	VIO
JetBlue Airways	12/3/2019	0:25:34	A	30	JBU679	A320	LAS	93.8	79.0	VIO + Alt Enf
JetBlue Airways	12/3/2019	1:14:12	A	30	JBU405	A320	BOS	93.9	79.0	VIO + Alt Enf
JetBlue Airways	12/3/2019	22:25:43	D	30	JBU14	A320	JFK	95.8	90.0	VIO
JetBlue Airways	12/3/2019	23:30:11	A	30	JBU1925	A320	SJC	91.8	79.0	VIO + Alt Enf
JetBlue Airways	12/4/2019	1:27:52	A	30	JBU405	A320	BOS	92.1	79.0	VIO + Alt Enf
JetBlue Airways	12/4/2019	23:32:45	D	30	JBU180	A320	LAS	89.7	79.0	VIO + Alt Enf
JetBlue Airways	12/5/2019	3:00:22	MA	30	JBU679	A320	LAS	92.5	79.0	VIO + Alt Enf
TTX Holdings LLC	12/7/2019	4:46:04	A	30		C525		85.3	79.0	VIO
JetBlue Airways	12/8/2019	6:42:27	D	30	JBU1136	A320	SFO	92.4	90.0	VIO + Alt Enf
MCB Aviation LLC	12/9/2019	6:48:57	D	30		FA20		92.5	90.0	VIO
JetBlue Airways	12/11/2019	22:09:58	D	30	JBU14	A320	JFK	95.3	90.0	VIO
JetBlue Airways	12/11/2019	22:29:19	A	30	JBU405	A320	BOS	93.2	90.0	VIO
Norton Packaging Inc.	12/11/2019	23:03:05	D	30		C25A		86.0	79.0	VIO
Wilmington Trust Co. Trustees	12/11/2019	23:46:42	A	30		H25B		88.7	79.0	VIO
McColee Partners LLC	12/13/2019	23:13:57	D	30		G150		82.2	79.0	VIO
JetBlue Airways	12/14/2019	1:10:21	A	30	JBU679	A320	LAS	92.8	79.0	VIO + Alt Enf
JetBlue Airways	12/18/2019	0:33:24	A	30	JBU405	A320	BOS	91.3	79.0	VIO + Alt Enf
Wilmington Trust Co. Trustees	12/19/2019	4:55:56	D	30		C560		84.2	79.0	VIO
Private	12/22/2019	7:50:29	D	26R		BE35		96.3	92.0	VIO
Meruelo Group LLC	12/23/2019	0:13:22	A	30		GLF5		88.4	79.0	VIO
Belagrasco Aviation II LLC	12/23/2019	6:22:21	D	12		GLF4		93.6	90.0	VIO
JetBlue Airways	12/24/2019	23:05:45	A	30	JBU2507	A320	SEA	93.7	79.0	VIO + Alt Enf
JetBlue Airways	12/24/2019	23:20:17	A	30	JBU1925	A320	SJC	92.9	79.0	VIO + Alt Enf
JetBlue Airways	12/25/2019	23:10:41	A	12	JBU43	A320	RNO	95.8	79.0	VIO + Alt Enf
JetBlue Airways	12/25/2019	23:42:49	D	12	JBU504	A320	BOS	93.1	79.0	VIO + Alt Enf

## AIRCRAFT NOISE VIOLATORS

### December 2019

OWNERNAME	DATE	TIME	A/D	RWY	FLIGHT #	A/C TYPE	ORIG/DEST	SEL	LIMIT	STATUS
JetBlue Airways	12/26/2019	0:17:20	D	12	JBU14	A320	JFK	93.8	79.0	VIO + Alt Enf
JetBlue Airways	12/26/2019	1:15:11	A	30	JBU531	A320	SLC	93.3	79.0	VIO + Alt Enf
JetBlue Airways	12/26/2019	1:20:02	A	30	JBU679	A320	LAS	92.9	79.0	VIO + Alt Enf
Cassill Aircraft Leasing Inc.	12/27/2019	5:13:36	D	30		BE36		85.5	79.0	VIO
JetBlue Airways	12/28/2019	22:22:13	D	30	JBU504	A320	BOS	94.0	90.0	VIO

**DEFINITIONS:**

**A/C Type** — Aircraft Type

**RWY** — Runway

**A/D/MA**— Arrival / Departure/Missed Approach

**SEL** — SENEL — Single Event Noise Exposure Level (dBA)

**ALT ENF** — Alternative Enforcement

**VIO**—Violation

## AIR CARRIER NOISE BUDGET PERFORMANCE

### January 2019 - December 2019

RMT #	NOISE BUDGET	ACTUAL	PERCENT BUDGET USED
9	70.7	48.9	69.2%
10	84.6	69.1	81.7%

Source: Long Beach Airport Staff Calculations

**DEFINITIONS:**

**RMT** — Remote Monitoring Terminal

## TOTAL NOISE BUDGET PERFORMANCE

### January 2019 - December 2019

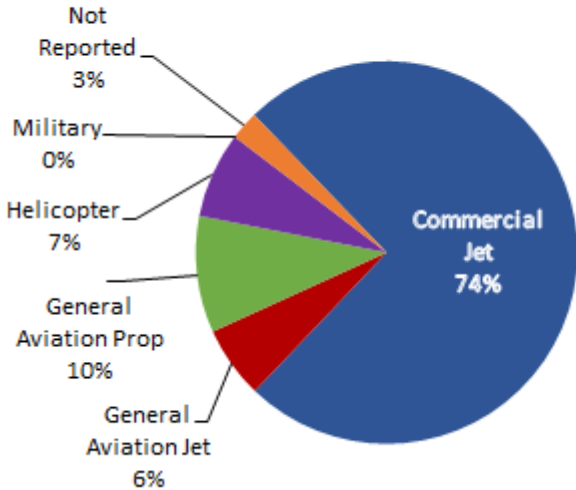
RMT #	NOISE BUDGET	ACTUAL	PERCENT BUDGET USED
9	102.7	59.6	58.0%
10	120.9	83.1	68.7%

Source: Long Beach Airport Staff Calculations

# LGB AIRCRAFT NOISE COMPLAINTS

## December 2019

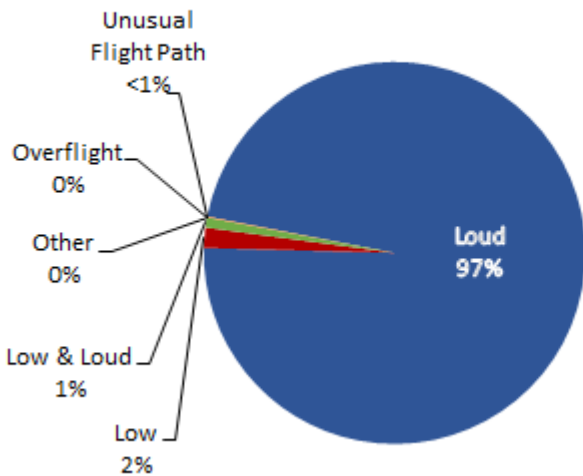
### Complaints by Aircraft Types



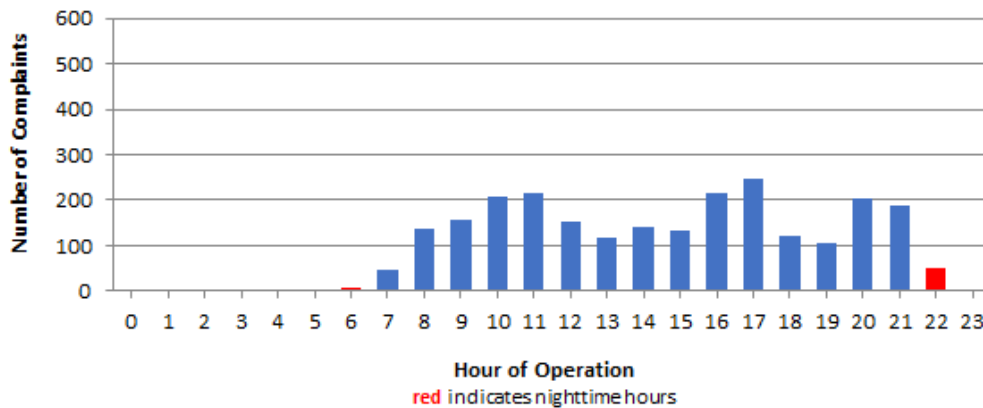
### Complaints by Zip Code

Zip Code	Complaints	Units
90254	2	1
90278	263	3
90505	24	1
90740	5	1
90803	1	1
90805	19	1
90806	1	1
90807	30	10
90808	13	1
90815	2	2
92612	12	1
92615	10	1
92625	5	1
92626	476	2
92627	10	2
92646	2	1
92647	781	4
92648	610	14
92649	164	5
92653	1	1
92656	6	2
92660	6	4
92661	1	1
92677	4	1
92807	11	2
92845	1	1
92869	2	2
Not Reported	2	2
<b>Grand Total</b>	<b>2,464</b>	<b>69</b>

### Complaints by Concern



### Complaints by Time of Operation



**[THIS PAGE INTENTIONALLY LEFT BLANK]**



# long beach airport



## Long Beach Airport

4100 E. Donald Douglas Drive, Long Beach, CA 90808

[www.lgb.org](http://www.lgb.org) • [lgbapt@longbeach.gov](mailto:lgbapt@longbeach.gov)

Administration • (562) 570-2619