

## Airport Advisory Commission

**Wayne Chaney Sr.**  
Chair

**Jeffrey Anderson**  
Vice Chair

**Alvaro Castillo**

**Rita Nayak**

**Phil Ramsdale**

**Geetanjali Reuben**

**Jeff Rowe**

**Roland B. Scott, Jr.**

**Mary Sophiea**

## Airport Management

**Jess L. Romo, A.A.E.**  
Airport Director

**Juan López-Ríos**  
Deputy Airport Director

**Ken Mason**  
Executive Assistant

**Claudia Lewis**  
Manager of Administration  
& Finance

**Ron Reeves**  
Airport Operations Manager

**Ambi Thurai**  
Engineering Officer

**Dale Worsham**  
Administrative Officer

**Karl Zittel**  
Airside Operations Officer

**Stephanie Montuya-Morisky**  
Public Affairs Officer

**Matthew Brookes**  
Airport Properties Officer

**Scott Garrett**  
Facilities Management Officer

**Mony Chhey**  
Financial Services Officer

**Ryan McMullan**  
Noise & Environmental Affairs  
Officer



**long beach**  
airport



# Long Beach Airport Monthly Noise Report September 2018

**COMMERCIAL AIRCRAFT LATE NIGHT ACTIVITY**  
**LGB Current Month & Calendar Year-To-Date Statistics (10 PM- 7AM)**  
**September 2018**

September				CY-T-D 2018		
10PM - 11PM Activity	2018	2017	Change	2018	2017	Change
<b>Air Carrier &amp; Commuter Operations</b>	<b>2,579</b>	<b>2,983</b>	<b>-13.5%</b>	<b>27,058</b>	<b>26,793</b>	<b>1.0%</b>
American/Mesa/SkyWest Airlines	0	3	-300.0%	29	16	81.3%
Delta/SkyWest Airlines	2	2	0.0%	17	24	-29.2%
FedEx	0	0		0	0	
Hawaiian Airlines	1	0	100.0%	1	0	100.0%
JetBlue Airways	10	33	-69.7%	279	366	-23.8%
Southwest Airlines	0	0		9	15	-40.0%
UPS	0	0		0	0	
<b>Subtotal 10PM-11PM</b>	<b>13</b>	<b>38</b>	<b>-65.8%</b>	<b>335</b>	<b>421</b>	<b>-20.4%</b>
11PM- 7AM Activity	2018	2017	Change	2018	2017	Change
American/Mesa/SkyWest Airlines	0	0		15	11	36.4%
Delta/SkyWest Airlines	0	0		5	6	-16.7%
FedEx	0	0		0	0	
Hawaiian Airlines	0	0		1	0	100.0%
JetBlue Airways	6	24	-75.0%	166	209	-20.6%
Southwest Airlines	0	0		0	5	-500.0%
UPS	0	0		0	0	
<b>Subtotal 11PM-7AM</b>	<b>6</b>	<b>24</b>	<b>-75.0%</b>	<b>187</b>	<b>231</b>	<b>-19.0%</b>
<b>TOTAL</b>	<b>19</b>	<b>62</b>	<b>-69.4%</b>	<b>522</b>	<b>652</b>	<b>-19.9%</b>

Notes:

0.7% (19 of 2,579) of total commercial operations occurred between 10pm - 7am.

0.6 flights - Nightly average for all late night (10:00 PM—7:00 AM) commercial flights, includes unanticipated delays.

0.2 flights - Nightly average for commercial flights after 11 PM.

Of the 19 Late-Night Operations, 42% were due to air traffic control conditions, 26% were due to mechanical issues, 11% were due to ferry flights, 5% were due to staffing-related issues, 5% were due to diversion, 5% occurred during the five-minute grace period and 5% were due to unknown reasons.

<b>AIRPORT NOISE VIOLATIONS</b>						
<b>LGB Current Month &amp; Calendar Year-To-Date Statistics</b>						
<b>September 2018</b>						
<b>September</b>				<b>CY-T-D 2018</b>		
<b>Air Carrier Noise Violations</b>	<b>2018</b>	<b>2017</b>	<b>Change</b>	<b>2018</b>	<b>2017</b>	<b>Change</b>
American/Mesa Airlines	0	0		17	6	183.3%
Delta/SkyWest Airlines	0	0		5	4	25.0%
FedEx	0	0		0	0	
Hawaiian Airlines	0	0		1	0	100.0%
JetBlue Airways	6	28	-78.6%	195	209	-6.7%
Southwest Airlines	0	0		0	3	-300.0%
UPS	0	0		0	0	
<b>Subtotal</b>	<b>6</b>	<b>28</b>	<b>-75.0%</b>	<b>218</b>	<b>222</b>	<b>-1.8%</b>
<b>Commuter Noise Violations</b>	<b>2018</b>	<b>2017</b>	<b>Change</b>	<b>2018</b>	<b>2017</b>	<b>Change</b>
American/SkyWest Airlines	0	0		0	0	
Delta/SkyWest Airlines	0	0		0	0	
<b>Subtotal</b>	<b>0</b>	<b>0</b>		<b>0</b>	<b>0</b>	
<b>Non-Commercial Noise Violations</b>	<b>2018</b>	<b>2017</b>	<b>Change</b>	<b>2018</b>	<b>2017</b>	<b>Change</b>
All GA, Charter & Other	14	8	75.0%	100	128	-21.9%
<b>TOTAL</b>	<b>21</b>	<b>36</b>	<b>-41.7%</b>	<b>318</b>	<b>350</b>	<b>-9.1%</b>
<b>Monetary Fines</b>		<b>2018</b>	<b>2017</b>	<b>2018</b>	<b>2017</b>	
Airport Surcharges	\$2,700	\$1,800		\$57,600	\$20,000	
Consent Decree	\$36,000	\$138,000		\$900,000	\$1,080,000	
<b>TOTAL</b>	<b>\$38,700</b>	<b>\$139,800</b>		<b>\$957,600</b>	<b>\$1,100,000</b>	

<b>AIRPORT OPERATIONS</b>						
<b>LGB Current Month &amp; Calendar Year-To-Date Statistics</b>						
<b>September 2018</b>						
<b>September</b>				<b>CY-T-D 2018</b>		
<b>Airport Operations (FAA)</b>	<b>2018</b>	<b>2017</b>	<b>Change</b>	<b>2018</b>	<b>2017</b>	<b>Change</b>
Air Carrier + Commuter Carriers	2,579	2,983	-13.5%	27,058	26,793	1.0%
Air Taxi + General Aviation	17,858	24,603	-27.4%	175,681	212,078	-17.2%
Military Operations	78	92	-15.2%	1,126	1,042	8.1%
<b>Total Aircraft Operations</b>	<b>20,515</b>	<b>27,678</b>	<b>-25.9%</b>	<b>203,865</b>	<b>239,913</b>	<b>-15.0%</b>

Notes:

0.1% (21 of 20,515) of the Airport's total aircraft operations (Commercial & GA) resulted in an aircraft noise violation.  
0.3% (7 of 2,579) of the Airport's Commercial operations (Commercial & Commuter) resulted in an aircraft noise violation.

# AIRCRAFT NOISE VIOLATORS

## September 2018

OWNERNAME	DATE	TIME	A/D	RWY	FLIGHT #	A/C TYPE	ORIG/DEST	SEL	LIMIT	STATUS
LFG Aviation 2 Inc Trustee	9/2/2018	2:47:33	A	30		GLF5		87.0	79.0	VIO
JetBlue Airways	9/2/2018	23:20:24	A	30	JBU679	A320	LAS	93.8	79.0	VIO + Alt Enf
JetBlue Airways	9/3/2018	2:03:52	A	30	JBU6279	A320	LAS	92.5	79.0	VIO + Alt Enf
FKM King Air LLC	9/4/2018	2:12:57	A	30		B350		89.3	79.0	VIO
JetBlue Airways	9/7/2018	23:08:17	D	26R	JBU6109	A320	SAN	98.3	n/a	VIO + Alt Enf
NetJets Inc.	9/13/2018	23:49:46	A	30		C56X		92.5	79.0	VIO
JetBlue Airways	9/17/2018	23:13:23	A	30	JBU943	A320	FLL	93.0	79.0	VIO + Alt Enf
TFF Inc	9/18/2018	23:53:38	D	30		BE35		89.5	79.0	VIO
Kaiser Air, Inc.	9/20/2018	22:43:13	D	30		B735		93.1	90.0	VIO
Anglo-American Aviation Inc.	9/21/2018	0:36:51	D	30		C172		84.0	79.0	VIO
JetBlue Airways	9/21/2018	23:23:35	A	30	JBU405	A320	BOS	93.9	79.0	VIO + Alt Enf
JetBlue Airways	9/22/2018	2:05:21	A	30	JBU679	A320	LAS	94.2	79.0	VIO + Alt Enf
Paradigm Air Carriers Inc.	9/24/2018	23:03:17	D	30		B752		92.3	79.0	VIO
Private	9/25/2018	23:30:55	M	30		SR22		82.4	79.0	VIO
Northwestern Corp DBA	9/26/2018	5:40:22	D	12		C560		85.7	79.0	VIO
Cathexis Holdings LP	9/26/2018	23:13:27	A	30		F900		89.1	79.0	VIO
Dynamic Aircraft Consortium LLC	9/27/2018	1:16:25	A	30		SW3		83.6	79.0	VIO
MLW Aviation LLC	9/27/2018	2:21:46	A	30		B752		96.6	79.0	VIO
Marketstreet Aviation LLC	9/29/2018	2:53:43	D	30		CL35		86.3	79.0	VIO
American Aviation Academy Inc	9/30/2018	1:12:52	D	30		C172		84.9	79.0	VIO

**DEFINITIONS:**

**A/C Type** — Aircraft Type

**RWY** — Runway

**A/D** — Arrival / Departure

**SEL** — SENEL — Single Event Noise Exposure Level (dBA)

**ALT ENF** — Alternative Enforcement

**VIO** — Violation

**M** — Missed Approach

## AIR CARRIER NOISE BUDGET PERFORMANCE

### October 2017 - September 2018

RMT #	NOISE BUDGET	ACTUAL	PERCENT BUDGET USED
9	70.7	64.3	90.9%
10	84.6	84.3	99.6%

#### DEFINITIONS:

RMT — Remote Monitoring Terminal

## TOTAL NOISE BUDGET PERFORMANCE

### October 2017 - September 2018

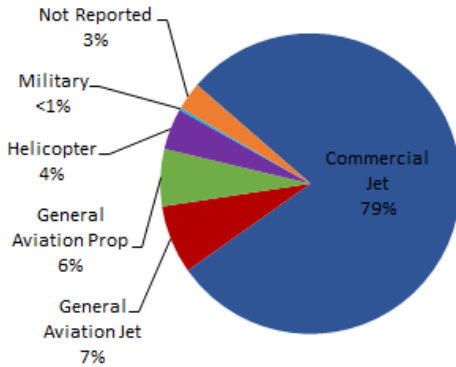
RMT #	NOISE BUDGET	ACTUAL	PERCENT BUDGET USED
9	102.7	74.9	72.9%
10	120.9	99.1	82.0%

Source: LGB staff calculations

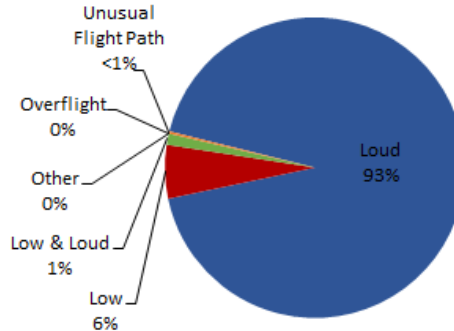
# LGB AIRCRAFT NOISE COMPLAINTS

## September 2018

### Complaints by Aircraft Types



### Complaints by Concern



### Complaints by Zip Code<sup>1</sup>

Zip Code	Complaints	Units
90277	2	2
90278	1	1
90501	1	1
90505	1	1
90713	6	2
90740	9	1
90805	8	2
90806	1	1
90807	49	20
90808	2	2
90815	5	2
92612	17	1
92626	448	2
92646	4	1
92647	1,047	8
92648	291	12
92649	516	13
92651	3	1
92660	2	1
Not Reported	3	3
<b>Grand Total</b>	<b>2,416</b>	<b>77</b>

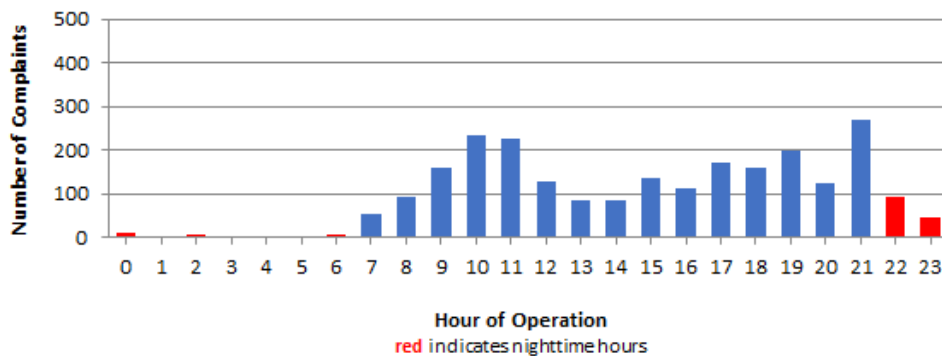
### Long Beach Residents' Helicopter Complaints Submitted to FAA<sup>2</sup>

Zip Code	Individual Complaints	Number of Individuals	Anonymous Complaints	Total Complaints
90802	2	1	15	17
90803	151	9	52	203
90804	3	1	0	3
90808	0	n/a	6	6
90814	84	3	307	391
<b>Grand Total</b>	<b>240</b>	<b>14</b>	<b>380</b>	<b>620</b>

<sup>1</sup> These data include data submitted directly to Long Beach Airport and does not include data submitted to FAA.

<sup>2</sup> These data reflect helicopter noise complaints submitted directly to FAA.

### Complaints by Time of Operation



**[THIS PAGE INTENTIONALLY LEFT BLANK]**



# long beach airport



## Long Beach Airport

4100 E. Donald Douglas Drive, Long Beach, CA 90808

[www.lgb.org](http://www.lgb.org) • [lgbapt@longbeach.gov](mailto:lgbapt@longbeach.gov)

Administration • (562) 570-2619