

Airport Advisory Commission

Wayne Chaney Sr.
Chair

Jeffrey Anderson
Vice Chair

Alvaro Castillo

Rita Nayak

Phil Ramsdale

Geetanjali Reuben

Jeff Rowe

Roland B. Scott, Jr.

Mary Sophiea

Airport Management

Jess L. Romo, A.A.E.
Airport Director

Juan López-Rios
Deputy Airport Director

Ken Mason
Executive Assistant

Claudia Lewis
Manager of Administration
& Finance

Ron Reeves
Airport Operations Manager

Ambi Thurai
Engineering Officer

Dale Worsham
Administrative Officer

Karl Zittel
Airside Operations Officer

Stephanie Montuya-Morisky
Public Affairs Officer

Matthew Brookes
Airport Properties Officer

Scott Garrett
Facilities Management Officer

Ryan McMullan
Noise & Environmental Affairs
Officer



long beach
airport



Long Beach Airport Monthly Noise Report August 2018

COMMERCIAL AIRCRAFT LATE NIGHT ACTIVITY
LGB Current Month & Calendar Year-To-Date Statistics (10 PM- 7AM)
August 2018

August				CY-T-D 2018		
10PM - 11PM Activity	2018	2017	Change	2018	2017	Change
Air Carrier & Commuter Operations	3,050	3,096	-1.5%	24,479	23,810	2.8%
American/Mesa/SkyWest Airlines	2	2	0.0%	29	13	123.1%
Delta/SkyWest Airlines	2	5	-60.0%	15	22	-31.8%
FedEx	0	0		0	0	
Hawaiian Airlines	0	0		0	0	
JetBlue Airways	36	48	-25.0%	269	333	-19.2%
Southwest Airlines	0	1	-100.0%	9	15	-40.0%
UPS	0	0		0	0	
Subtotal 10PM-11PM	40	56	-28.6%	322	383	-15.9%
11PM- 7AM Activity	2018	2017	Change	2018	2017	Change
American/Mesa/SkyWest Airlines	8	1	700.0%	15	11	36.4%
Delta/SkyWest Airlines	0	0		5	6	-16.7%
FedEx	0	0		0	0	
Hawaiian Airlines	1	0	100.0%	1	0	100.0%
JetBlue Airways	27	29	-6.9%	160	185	-13.5%
Southwest Airlines	0	0		0	5	-500.0%
UPS	0	0		0	0	
Subtotal 11PM-7AM	36	30	20.0%	181	207	-12.6%
TOTAL	76	86	-11.6%	503	590	-14.7%

Notes:

2.5% (76 of 3,050) of total commercial operations occurred between 10pm - 7am.

2.5 flights - Nightly average for all late night (10:00 PM—7:00 AM) commercial flights, includes unanticipated delays.

1.2 flights - Nightly average for commercial flights after 11 PM.

Of the 76 Late-Night Operations, 30% were due to mechanical issues, 29% were due to air traffic control conditions, 17% were due to unknown reasons, 11% were due to staffing-related issues, 5% occurred during the five-minute grace period, 3% were due to poor weather conditions, 3% were due to ferry flights, 1% were due to fueling issues and 1% were due to explicit air traffic control direction.

AIRPORT NOISE VIOLATIONS						
LGB Current Month & Calendar Year-To-Date Statistics						
August 2018						
August				CY-T-D 2018		
Air Carrier Noise Violations	2018	2017	Change	2018	2017	Change
American/Mesa Airlines	7	0	700.0%	17	6	183.3%
Delta/SkyWest Airlines	0	0		5	4	25.0%
FedEx	0	0		0	0	
Hawaiian Airlines	1	0	100.0%	1	0	100.0%
JetBlue Airways	28	24	16.7%	189	181	4.4%
Southwest Airlines	0	0		0	3	-300.0%
UPS	0	0		0	0	
Subtotal	36	24	50.0%	212	194	9.3%
Commuter Noise Violations	2018	2017	Change	2018	2017	Change
American/SkyWest Airlines	0	0		0	0	
Delta/SkyWest Airlines	0	0		0	0	
Subtotal	0	0		0	0	
Non-Commercial Noise Violations	2018	2017	Change	2018	2017	Change
All GA, Charter & Other	6	17	-64.7%	86	120	-28.3%
TOTAL	42	41	2.4%	298	314	-5.1%
Monetary Fines	2018	2017		2018	2017	
Airport Surcharges	\$10,500	\$1,900		\$54,900	\$18,200	
Consent Decree	\$150,000	\$138,000		\$864,000	\$942,000	
TOTAL	\$160,500	\$139,900		\$918,900	\$960,200	

AIRPORT OPERATIONS						
LGB Current Month & Calendar Year-To-Date Statistics						
August 2018						
August				CY-T-D 2018		
Airport Operations (FAA)	2018	2017	Change	2018	2017	Change
Air Carrier + Commuter Carriers	3,050	3,096	-1.5%	24,479	23,810	2.8%
Air Taxi + General Aviation	20,343	25,624	-20.6%	157,823	187,475	-15.8%
Military Operations	99	102	-2.9%	1,048	950	10.3%
Total Aircraft Operations	23,492	28,822	-18.5%	183,350	212,235	-13.6%

Notes:

0.2% (42 of 23,492) of the Airport's total aircraft operations (Commercial & GA) resulted in an aircraft noise violation.

1.2% (36 of 3,050) of the Airport's Commercial operations (Commercial & Commuter) resulted in an aircraft noise violation.

AIRCRAFT NOISE VIOLATORS

August 2018

OWNERNAME	DATE	TIME	A/D	RWY	FLIGHT #	A/C TYPE	ORIG/DEST	SEL	LIMIT	STATUS
JetBlue Airways	8/2/2018	23:11:01	D	30	JBU448	A320	OAK	89.9	79.0	VIO + Alt Enf
JetBlue Airways	8/2/2018	23:48:52	A	30	JBU405	A320	BOS	93.3	79.0	VIO + Alt Enf
American Airlines	8/3/2018	0:24:24	A	30	ASH5791	CRJ9	PHX	91.2	79.0	VIO
Pontiac Aviation LLC	8/3/2018	0:41:48	D	30		GLF4		90.0	79.0	VIO
JetBlue Airways	8/3/2018	22:29:16	D	30	JBU944	A320	FLL	95.0	90.0	VIO
JetBlue Airways	8/4/2018	0:36:49	A	30	JBU1925	A320	SJC	92.2	79.0	VIO + Alt Enf
JetBlue Airways	8/4/2018	3:58:23	A	30	JBU6129	A320	LAS	92.0	79.0	VIO + Alt Enf
JetBlue Airways	8/4/2018	23:12:45	D	30	JBU448	A320	OAK	88.8	79.0	VIO + Alt Enf
JetBlue Airways	8/5/2018	23:35:12	A	30	JBU6115	A320	RNO	92.2	79.0	VIO + Alt Enf
JetBlue Airways	8/6/2018	1:20:57	A	30	JBU1635	A321	SFO	92.6	79.0	VIO + Alt Enf
JetBlue Airways	8/6/2018	23:42:18	D	30	JBU504	A320	BOS	96.1	79.0	VIO + Alt Enf
JetBlue Airways	8/6/2018	23:59:28	D	26R	JBU1980	A321	LAS	102.1	n/a	VIO + Alt Enf
JetBlue Airways	8/7/2018	2:29:29	A	26R	JBU2079	A321	LAS	91.4	n/a	VIO + Alt Enf
JetBlue Airways	8/8/2018	4:22:21	A	26R	JBU1013	A320	JFK	92.4	n/a	VIO + Alt Enf
JetBlue Airways	8/8/2018	22:15:06	D	30	JBU14	A320	JFK	96.5	90.0	VIO
JetBlue Airways	8/8/2018	23:18:34	D	30	JBU216	A320	AUS	89.7	79.0	VIO + Alt Enf
JetBlue Airways	8/8/2018	23:23:09	A	26R	JBU405	A320	BOS	92.9	n/a	VIO + Alt Enf
JetBlue Airways	8/12/2018	0:05:22	A	30	JBU679	A320	LAS	94.6	79.0	VIO + Alt Enf
JetBlue Airways	8/12/2018	22:18:19	A	30	JBU679	A320	LAS	93.9	90.0	VIO
American Airlines	8/12/2018	23:28:38	A	30	ASH5791	CRJ9	PHX	91.6	79.0	VIO
Newport Aviation LLC	8/13/2018	4:13:41	D	30		BE40		85.1	79.0	VIO
American Airlines	8/13/2018	23:08:55	A	26R	ASH5791	CRJ9	PHX	92.2	n/a	VIO
Hawaiian Airlines	8/13/2018	23:48:15	A	26R	HAL70	A21N	HNL	93.6	n/a	VIO
JetBlue Airways	8/14/2018	0:24:18	A	26R	JBU943	A320	FLL	92.6	n/a	VIO + Alt Enf
American Airlines	8/14/2018	23:12:02	A	26R	ASH5791	CRJ9	PHX	88.3	n/a	VIO
JetBlue Airways	8/14/2018	23:19:35	A	26R	JBU679	A320	LAS	89.9	n/a	VIO + Alt Enf
JetBlue Airways	8/14/2018	23:57:59	A	26R	JBU943	A320	FLL	90.0	n/a	VIO + Alt Enf
JetBlue Airways	8/15/2018	1:49:20	A	26R	JBU1635	A320	SFO	89.6	n/a	VIO + Alt Enf
JetBlue Airways	8/15/2018	23:35:32	A	26R	JBU679	A320	LAS	93.5	n/a	VIO + Alt Enf
JetBlue Airways	8/16/2018	23:10:47	A	30	JBU531	A320	SLC	92.1	79.0	VIO + Alt Enf

AIRCRAFT NOISE VIOLATORS

August 2018

OWNERNAME	DATE	TIME	A/D	RWY	FLIGHT #	A/C TYPE	ORIG/DEST	SEL	LIMIT	STATUS
American Airlines	8/16/2018	23:33:34	A	26R	ASH5791	CRJ9	PHX	89.8	n/a	VIO
JetBlue Airways	8/17/2018	1:22:47	D	08L	JBU504	A320	DEN	95.3	n/a	VIO + Alt Enf
JetBlue Airways	8/17/2018	23:08:03	A	26R	JBU405	A320	BOS	93.1	n/a	VIO + Alt Enf
JetBlue Airways	8/17/2018	23:23:53	A	26R	JBU943	A320	FLL	93.2	n/a	VIO + Alt Enf
Cathexis Holdings LP	8/19/2018	23:29:59	D	30		F900		84.9	79.0	VIO
JetBlue Airways	8/20/2018	23:11:53	D	30	JBU504	A320	BOS	96.1	79.0	VIO + Alt Enf
Wyle E Inc	8/21/2018	5:21:44	A	30		P28A		82.6	79.0	VIO
JetBlue Airways	8/23/2018	23:13:24	D	30	JBU1436	A320	SFO	93.3	79.0	VIO + Alt Enf
American Airlines	8/23/2018	23:25:01	A	30	ASH5791	CRJ9	PHX	91.4	79.0	VIO
Sino Jet Management Ltd.	8/24/2018	22:10:17	D	30		B737		96.7	90.0	VIO
American Airlines	8/24/2018	23:45:50	A	30	ASH5791	CRJ9	PHX	91.4	79.0	VIO
Keller Aviation LLC	8/26/2018	1:43:47	A	30		PC12		91.1	79.0	VIO

DEFINITIONS:

A/C Type — Aircraft Type

RWY — Runway

A/D — Arrival / Departure

SEL — SENEL — Single Event Noise Exposure Level (dBA)

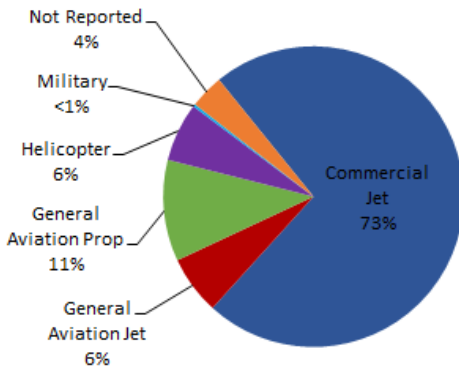
ALT ENF — Alternative Enforcement

VIO — Violation

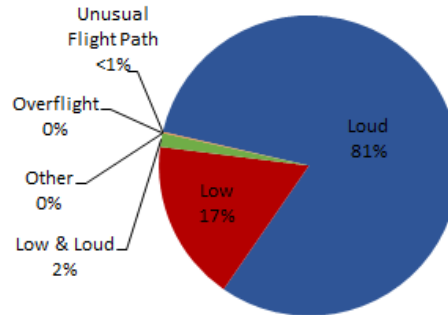
LGB AIRCRAFT NOISE COMPLAINTS

August 2018

Complaints by Aircraft Types



Complaints by Concern



Complaints by Zip Code¹

Zip Code	Complaints	Units
90277	1	1
90713	2	2
90740	15	3
90746	4	1
90803	1	1
90805	8	1
90807	94	29
90808	23	15
90814	1	1
90815	3	3
92612	89	1
92626	500	2
92646	3	2
92647	539	8
92648	265	18
92649	1,059	12
Not Reported	6	6
Grand Total	2,613	106

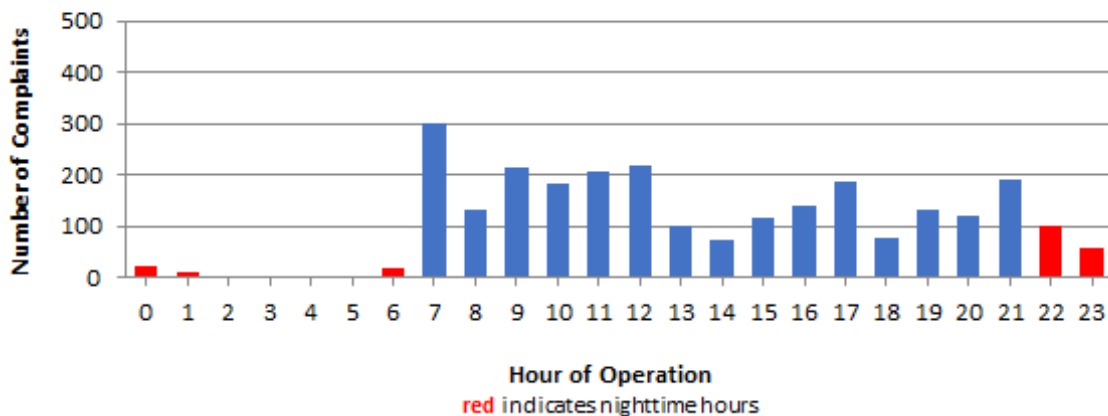
Long Beach Residents' Helicopter Complaints Submitted to FAA²

Zip Code	Individual Complaints	Number of Individuals	Anonymous Complaints	Total Complaints
90802	2	1	1	3
90803	176	8	87	263
90804	1	1	7	8
90807	1	1	0	1
90808	0	n/a	5	5
90814	57	3	231	288
90815	1	1	0	1
Grand Total	238	15	331	569

¹ These data include data submitted directly to Long Beach Airport and does not include data submitted to FAA.

² These data reflect helicopter noise complaints submitted directly to FAA.

Complaints by Time of Operation



[THIS PAGE INTENTIONALLY LEFT BLANK]



long beach airport



Long Beach Airport

4100 E. Donald Douglas Drive, Long Beach, CA 90808

www.lgb.org • lgbapt@longbeach.gov

Administration • (562) 570-2619