

## Airport Advisory Commission

**Wayne Chaney Sr.**  
Chair

**Jeffrey Anderson**  
Vice Chair

**Alvaro Castillo**

**Hal Gosling**

**Rita Nayak**

**Phil Ramsdale**

**Jeff Rowe**

**Roland B. Scott, Jr.**



## Airport Management

**Jess L. Romo, A.A.E.**  
Airport Director

**Juan López-Rios**  
Deputy Airport Director

**Ken Mason**  
Executive Assistant

**Claudia Lewis**  
Manager of Administration  
& Finance

**Ron Reeves**  
Airport Operations Manager

**Ambi Thurai**  
Engineering Officer

**Dale Worsham**  
Administrative Officer

**Karl Zittel**  
Airsides Operations Officer

**Stephanie Montuya-Morisky**  
Public Affairs Officer

**Matthew Brookes**  
Airport Properties Officer



# Long Beach Airport Monthly Noise Report May 2018

**COMMERCIAL AIRCRAFT LATE NIGHT ACTIVITY**  
**LGB Current Month & Calendar Year-To-Date Statistics (10 PM- 7AM)**  
**May 2018**

				May			CY-T-D 2018		
10PM - 11PM Activity	2018	2017	Change	2018	2017	Change			
<b>Air Carrier &amp; Commuter Operations</b>	<b>3,160</b>	<b>3,085</b>	<b>2.4%</b>	<b>15,437</b>	<b>14,805</b>	<b>4.3%</b>			
American/Mesa/SkyWest Airlines	6	0	600.0%	19	7	171.4%			
Delta/SkyWest Airlines	2	2	0.0%	11	13	-15.4%			
FedEx	0	0		0	0				
JetBlue Airways	35	36	-2.8%	186	180	3.3%			
Southwest Airlines	3	2	50.0%	7	10	-30.0%			
UPS	0	0		0	0				
<b>Subtotal 10PM-11PM</b>	<b>46</b>	<b>40</b>	<b>15.0%</b>	<b>223</b>	<b>210</b>	<b>6.2%</b>			
<b>11PM- 7AM Activity</b>	<b>2018</b>	<b>2017</b>	<b>Change</b>	<b>2018</b>	<b>2017</b>	<b>Change</b>			
American/Mesa/SkyWest Airlines	0	2	-200.0%	2	8	-75.0%			
Delta/SkyWest Airlines	0	2	-200.0%	4	5	-20.0%			
FedEx	0	0		0	0				
JetBlue Airways	24	16	50.0%	104	94	10.6%			
Southwest Airlines	0	0		0	5	-500.0%			
UPS	0	0		0	0				
<b>Subtotal 11PM-7AM</b>	<b>24</b>	<b>20</b>	<b>20.0%</b>	<b>110</b>	<b>112</b>	<b>-1.8%</b>			
<b>TOTAL</b>	<b>70</b>	<b>60</b>	<b>16.7%</b>	<b>333</b>	<b>322</b>	<b>3.4%</b>			

Notes:

2.2% (70 of 3,160) of total commercial operations occurred between 10pm - 7am.

2.3 flights - Nightly average for all late night (10:00 PM—7:00 AM) commercial flights, includes unanticipated delays.

0.8 flights - Nightly average for commercial flights after 11 PM.

Of the 70 Late-Night Operations, 37% were due to mechanical issues, 26% were due to air traffic control conditions, 16% occurred during the five-minute grace period, 7% were due to staffing-related issues, 7% were due to unknown reasons, 4% were due to poor weather conditions, 1% were due to weight and balance issues and 1% were due to catering issues.

**AIRPORT NOISE VIOLATIONS**  
**LGB Current Month & Calendar Year-To-Date Statistics**  
**May 2018**

May				CY-T-D 2018		
<b>Air Carrier Noise Violations</b>	<b>2018</b>	<b>2017</b>	<b>Change</b>	<b>2018</b>	<b>2017</b>	<b>Change</b>
American/Mesa Airlines	0	0		5	2	150.0%
Delta/SkyWest Airlines	0	2	-200.0%	4	3	33.3%
FedEx	0	0		0	0	
JetBlue Airways	25	16	56.3%	124	94	31.9%
Southwest Airlines	0	0		0	3	-300.0%
UPS	0	0		0	0	
<b>Subtotal</b>	<b>25</b>	<b>18</b>	<b>38.9%</b>	<b>133</b>	<b>102</b>	<b>30.4%</b>
<b>Commuter Noise Violations</b>	<b>2018</b>	<b>2017</b>	<b>Change</b>	<b>2018</b>	<b>2017</b>	<b>Change</b>
American/SkyWest Airlines	0	0		0	0	
Delta/SkyWest Airlines	0	0		0	0	
<b>Subtotal</b>	<b>0</b>	<b>0</b>		<b>0</b>	<b>0</b>	
<b>Non-Commercial Noise Violations</b>	<b>2018</b>	<b>2017</b>	<b>Change</b>	<b>2018</b>	<b>2017</b>	<b>Change</b>
All GA, Charter & Other	13	12	8.3%	57	77	-26.0%
<b>TOTAL</b>	<b>38</b>	<b>30</b>	<b>26.7%</b>	<b>190</b>	<b>179</b>	<b>6.1%</b>
<b>Monetary Fines</b>	<b>2018</b>	<b>2017</b>		<b>2018</b>	<b>2017</b>	
Airport Surcharges	\$7,900	\$2,100		\$31,200	\$11,200	
Consent Decree	\$120,000	\$78,000		\$558,000	\$468,000	
<b>TOTAL</b>	<b>\$127,900</b>	<b>\$80,100</b>		<b>\$589,200</b>	<b>\$479,200</b>	

**AIRPORT OPERATIONS**  
**LGB Current Month & Calendar Year-To-Date Statistics**  
**May 2018**

May				CY-T-D 2018		
<b>Airport Operations (FAA)</b>	<b>2018</b>	<b>2017</b>	<b>Change</b>	<b>2018</b>	<b>2017</b>	<b>Change</b>
Air Carrier + Commuter Carriers	3,160	3,085	2.4%	15,437	14,805	4.3%
Air Taxi + General Aviation	19,783	26,343	-24.9%	100,223	112,454	-10.9%
Military Operations	185	143	29.4%	701	622	12.7%
<b>Total Aircraft Operations</b>	<b>23,128</b>	<b>29,571</b>	<b>-21.8%</b>	<b>116,361</b>	<b>127,881</b>	<b>-9.0%</b>

Notes:

0.2% (38 of 23,128) of the Airport's total aircraft operations (Commercial & GA) resulted in an aircraft noise violation.  
0.8% (25 of 3,160) of the Airport's Commercial operations (Commercial & Commuter) resulted in an aircraft noise violation.

# AIRCRAFT NOISE VIOLATORS

## May 2018

OWNERNAME	DATE	TIME	A/D	RWY	FLIGHT #	A/C TYPE	ORIG/DEST	SEL	LIMIT	STATUS
JetBlue Airways	5/1/2018	23:07:46	A	30	JBU679	A320	LAS	92.5	79.0	VIO + Alt Enf
JetBlue Airways	5/3/2018	23:10:29	A	30	JBU405	A320	BOS	93.4	79.0	VIO + Alt Enf
JetBlue Airways	5/4/2018	1:58:35	A	30	JBU365	A320	SMF	93.3	79.0	VIO + Alt Enf
390 LLC	5/4/2018	23:56:15	A	30		PRM1		85.1	79.0	VIO
Airush Inc.	5/5/2018	23:19:09	A	30		CL60		88.1	79.0	VIO
SV Consultants LLC	5/8/2018	6:49:47	A	30		P180		100.7	90.0	VIO
AF Holdings LLC	5/9/2018	22:41:03	A	30		GLF4		92.3	90.0	VIO
JetBlue Airways	5/10/2018	22:05:06	D	12	JBU504	A320	BOS	95.6	90.0	VIO
SN 53 LLC	5/11/2018	1:16:28	A	30		LJ60		86.2	79.0	VIO
Miramonte Aviation Inc	5/12/2018	5:03:58	D	12		C680		82.1	79.0	VIO
JetBlue Airways	5/13/2018	22:55:06	A	30	JBU943	A320	FLL	94.0	90.0	VIO
JetBlue Airways	5/14/2018	23:53:56	A	25R	JBU943	A320	FLL	94.3	n/a	VIO + Alt Enf
JetBlue Airways	5/15/2018	0:16:09	A	25R	JBU405	A320	BOS	93.2	n/a	VIO + Alt Enf
JetBlue Airways	5/15/2018	23:06:50	D	25R	JBU504	A320	SLC	99.4	n/a	VIO + Alt Enf
JetBlue Airways	5/15/2018	23:12:42	A	25R	JBU405	A320	BOS	93.5	n/a	VIO + Alt Enf
JetBlue Airways	5/17/2018	0:01:21	D	25R	JBU504	A320	PHX	99.8	n/a	VIO + Alt Enf
JetBlue Airways	5/17/2018	23:16:47	D	25R	JBU1436	A320	SFO	99.6	n/a	VIO + Alt Enf
JetBlue Airways	5/18/2018	22:20:27	D	30	JBU14	A320	JFK	95.7	90.0	VIO
JetBlue Airways	5/18/2018	23:09:11	D	30	JBU944	A320	FLL	93.2	79.0	VIO + Alt Enf
JetBlue Airways	5/18/2018	23:22:12	D	30	JBU504	A320	BOS	96.1	79.0	VIO + Alt Enf
Twining & Associates Inc.	5/18/2018	23:44:17	A	30		PA32		83.8	79.0	VIO
JetBlue Airways	5/19/2018	0:26:23	D	30	JBU1436	A320	SFO	89.6	79.0	VIO + Alt Enf
JetBlue Airways	5/19/2018	23:34:40	A	30	JBU179	A320	LAS	92.7	79.0	VIO + Alt Enf
JetBlue Airways	5/20/2018	0:21:22	D	30	JBU1436	A320	SFO	89.3	79.0	VIO + Alt Enf
Island Express Helicopters Inc.	5/20/2018	0:44:00	A	30		S76		85.3	79.0	VIO
JetBlue Airways	5/20/2018	22:10:46	A	30	JBU679	A320	LAS	93.9	90.0	VIO
JetBlue Airways	5/20/2018	23:35:58	A	30	JBU1925	A320	SJC	94.0	79.0	VIO + Alt Enf
JetBlue Airways	5/22/2018	4:08:28	A	30	JBU405	A320	BOS	93.4	79.0	VIO + Alt Enf
Private	5/23/2018	23:12:10	A	30		PA44		82.3	79.0	VIO
JetBlue Airways	5/24/2018	22:37:38	D	30	JBU14	A320	JFK	94.0	90.0	VIO

# AIRCRAFT NOISE VIOLATORS

## May 2018

OWNERNAME	DATE	TIME	A/D	RWY	FLIGHT #	A/C TYPE	ORIG/DEST	SEL	LIMIT	STATUS
JetBlue Airways	5/24/2018	23:26:07	D	30	JBU944	A320	FLL	94.8	79.0	VIO + Alt Enf
JetBlue Airways	5/24/2018	23:46:30	D	30	JBU1436	A320	SFO	94.0	79.0	VIO + Alt Enf
JetBlue Airways	5/25/2018	0:09:19	A	30	JBU1925	A320	SJC	94.2	79.0	VIO + Alt Enf
General Dynamics Mission Systems Inc	5/25/2018	5:21:26	D	30		G280		89.3	79.0	VIO
Private	5/28/2018	4:34:50	A	30		P28A		84.2	79.0	VIO
Big Wednesday Air LLC	5/28/2018	23:07:24	A	30		PC12		90.6	79.0	VIO
JetBlue Airways	5/30/2018	23:25:28	D	30	JBU944	A320	FLL	94.8	79.0	VIO + Alt Enf
Valley Logistics LLC	5/31/2018	5:16:11	D	30		C525		91.2	79.0	VIO

**DEFINITIONS:**

**A/C Type** — Aircraft Type

**RWY** — Runway

**A/D/G** — Arrival / Departure / Ground Operation

**SEL** — SENEL — Single Event Noise Exposure Level (dBA)

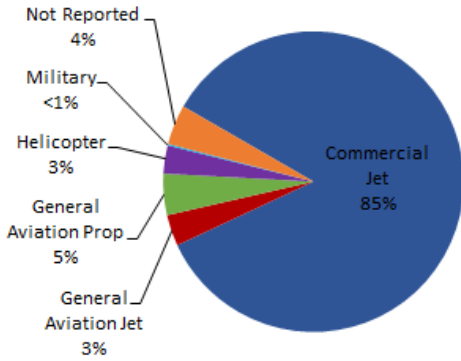
**ALT ENF** — Alternative Enforcement

**VIO** — Violation

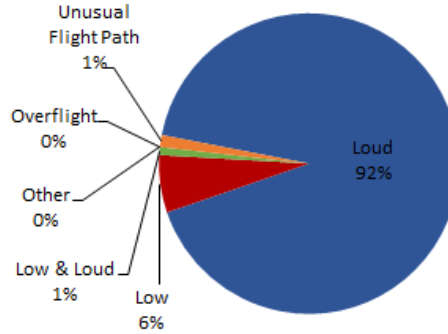
# LGB AIRCRAFT NOISE COMPLAINTS

## May 2018

### Complaints by Aircraft Types



### Complaints by Concern



### Complaints by Zip Code<sup>1</sup>

Zip Code	Complaints	Units
90248	1	1
90278	1	1
90712	1	1
90713	7	1
90720	1	1
90740	29	2
90755	1	1
90802	1	1
90804	10	2
90805	40	2
90806	1	1
90807	101	47
90808	31	27
90814	1	1
90815	3	2
92612	47	1
92626	732	3
92646	3	3
92647	147	5
92648	2,025	21
92649	532	17
92870	1	1
Not Reported	14	13
<b>Grand Total</b>	<b>3,730</b>	<b>155</b>

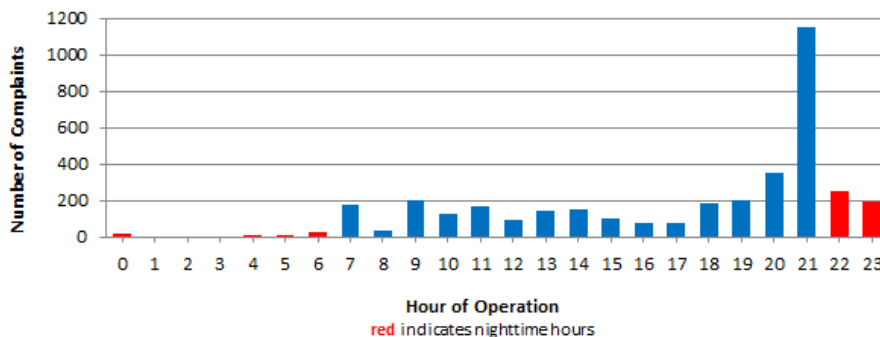
### Long Beach Residents' Helicopter Complaints Submitted to FAA<sup>2</sup>

Zip Code	Individual Complaints	Number of Individuals	Anonymous Complaints	Total Complaints
90802	8	3	23	31
90803	210	8	141	351
90804	1	1	0	1
90807	1	1	0	1
90808	0	n/a	3	3
90813	0	n/a	1	1
90814	39	2	312	351
90815	1	1	1	2
<b>Grand Total</b>	<b>260</b>	<b>16</b>	<b>481</b>	<b>741</b>

<sup>1</sup> These data include data submitted directly to Long Beach Airport and does not include data submitted to FAA.

<sup>2</sup> These data reflect helicopter noise complaints submitted directly to FAA.

### Complaints by Time of Operation



**[THIS PAGE INTENTIONALLY LEFT BLANK]**



# long beach airport



## Long Beach Airport

4100 E. Donald Douglas Drive, Long Beach, CA 90808

[www.lgb.org](http://www.lgb.org) • [lgbapt@longbeach.gov](mailto:lgbapt@longbeach.gov)

Administration • (562) 570-2619