

Airport Advisory Commission

Wayne Chaney Sr.
Chair

Jeffrey Anderson
Vice Chair

Alvaro Castillo

Hal Gosling

Rita Nayak

Phil Ramsdale

Jeff Rowe

Roland B. Scott, Jr.



long beach
airport



Airport Management

Jess L. Romo, A.A.E.
Airport Director

Juan López-Rios
Deputy Airport Director

Ken Mason
Executive Assistant

Claudia Lewis
Manager of Administration
& Finance

Ron Reeves
Airport Operations Manager

Ambi Thurai
Engineering Officer

Dale Worsham
Administrative Officer

Karl Zittel
Airsides Operations Officer

Stephanie Montuya-Morisky
Public Affairs Officer

Matthew Brookes
Airport Properties Officer



Long Beach Airport Monthly Noise Report April 2018

COMMERCIAL AIRCRAFT LATE NIGHT ACTIVITY
LGB Current Month & Calendar Year-To-Date Statistics (10 PM- 7AM)
April 2018

				April			CY-T-D 2018		
10PM - 11PM Activity	2018	2017	Change	2018	2017	Change			
Air Carrier & Commuter Operations	3,080	2,992	2.9%	12,277	11,720	4.8%			
American/Mesa/SkyWest Airlines	3	1	200.0%	13	7	85.7%			
Delta/SkyWest Airlines	0	0		9	11	-18.2%			
FedEx	0	0		0	0				
JetBlue Airways	30	30	0.0%	151	144	4.9%			
Southwest Airlines	3	1	200.0%	4	8	-50.0%			
UPS	0	0		0	0				
Subtotal 10PM-11PM	36	32	12.5%	177	170	4.1%			
11PM- 7AM Activity	2018	2017	Change	2018	2017	Change			
American/Mesa/SkyWest Airlines	0	0		2	6	-66.7%			
Delta/SkyWest Airlines	1	1	0.0%	4	3	33.3%			
FedEx	0	0		0	0				
JetBlue Airways	17	17	0.0%	80	78	2.6%			
Southwest Airlines	0	0		0	5	-500.0%			
UPS	0	0		0	0				
Subtotal 11PM-7AM	18	18	0.0%	86	92	-6.5%			
TOTAL	54	50	8.0%	263	262	0.4%			

Notes:

1.8% (54 of 3,080) of total commercial operations occurred between 10pm - 7am.

1.8 flights - Nightly average for all late night (10:00 PM—7:00 AM) commercial flights, includes unanticipated delays.

0.6 flights - Nightly average for commercial flights after 11 PM.

Of the 54 Late-Night Operations, 39% were due to mechanical issues, 17% were due to air traffic control conditions, 13% were due to staffing-related issues, 11% were due to poor weather conditions, 7% occurred during the five-minute grace period, 6% were due to unknown reasons, 4% were due to diversions and 4% were due to customer-related issues.

AIRPORT NOISE VIOLATIONS						
LGB Current Month & Calendar Year-To-Date Statistics						
April 2018						
April				CY-T-D 2018		
Air Carrier Noise Violations	2018	2017	Change	2018	2017	Change
American/Mesa Airlines	0	0		5	2	150.0%
Delta/SkyWest Airlines	1	0	100.0%	4	1	300.0%
FedEx	0	0		0	0	
JetBlue Airways	21	21	0.0%	99	78	26.9%
Southwest Airlines	0	0		0	3	-300.0%
UPS	0	0		0	0	
Subtotal	22	21	4.8%	108	84	28.6%
Commuter Noise Violations	2018	2017	Change	2018	2017	Change
American/SkyWest Airlines	0	0		0	0	
Delta/SkyWest Airlines	0	0		0	0	
Subtotal	0	0		0	0	
Non-Commercial Noise Violations	2018	2017	Change	2018	2017	Change
All GA, Charter & Other	11	10	10.0%	44	65	-32.3%
TOTAL	33	31	6.5%	152	149	2.0%
Monetary Fines	2018	2017		2018	2017	
Airport Surcharges	\$7,000	\$2,000		\$23,300	\$9,100	
Consent Decree	\$96,000	\$84,000		\$438,000	\$390,000	
TOTAL	\$103,000	\$86,000		\$461,300	\$399,100	

AIRPORT OPERATIONS						
LGB Current Month & Calendar Year-To-Date Statistics						
April 2018						
April				CY-T-D 2018		
Airport Operations (FAA)	2018	2017	Change	2018	2017	Change
Air Carrier + Commuter Carriers	3,080	2,992	2.9%	12,277	11,720	4.8%
Air Taxi + General Aviation	20,593	24,212	-14.9%	80,440	86,111	-6.6%
Military Operations	149	152	-2.0%	516	479	7.7%
Total Aircraft Operations	23,822	27,356	-12.9%	93,233	98,310	-5.2%

Notes:

0.1% (33 of 23,822) of the Airport's total aircraft operations (Commercial & GA) resulted in an aircraft noise violation.
0.7% (22 of 3,080) of the Airport's Commercial operations (Commercial & Commuter) resulted in an aircraft noise violation.

AIRCRAFT NOISE VIOLATORS

April 2018

OWNERNAME	DATE	TIME	A/D	RWY	FLIGHT #	A/C TYPE	ORIG/DEST	SEL	LIMIT	STATUS
JetBlue Airways	4/2/2018	23:11:03	A	30	JBU943	A320	FLL	94.2	79.0	VIO + Alt Enf
JetBlue Airways	4/4/2018	22:20:27	D	30	JBU504	A320	BOS	95.1	90.0	VIO
Sunridge Aviation LLC	4/6/2018	4:09:18	A	30		PC12		87.4	79.0	VIO
JetBlue Airways	4/6/2018	22:45:02	D	30	JBU944	A320	FLL	95.7	90.0	VIO
JetBlue Airways	4/6/2018	23:10:15	A	30	JBU405	A320	BOS	94.0	79.0	VIO + Alt Enf
JetBlue Airways	4/7/2018	2:20:49	D	30	JBU1436	A320	SFO	89.6	79.0	VIO + Alt Enf
JetBlue Airways	4/8/2018	22:26:27	A	30	JBU943	A320	FLL	93.4	90.0	VIO
JetBlue Airways	4/8/2018	22:54:41	A	30	JBU679	A320	LAS	93.2	90.0	VIO
JetBlue Airways	4/10/2018	23:08:15	A	30	JBU943	A320	FLL	93.0	79.0	VIO + Alt Enf
JetBlue Airways	4/10/2018	23:25:07	A	30	JBU529	A320	FLL	93.1	79.0	VIO + Alt Enf
JetBlue Airways	4/11/2018	0:39:02	D	30	JBU530	A320	FLL	92.1	79.0	VIO + Alt Enf
JetBlue Airways	4/11/2018	23:16:05	D	30	JBU1436	A320	SFO	89.7	79.0	VIO + Alt Enf
Passport 420 LLC	4/12/2018	23:08:50	A	30		HDJT		82.1	79.0	VIO
Private	4/13/2018	23:43:29	A	30		PA44		82.1	79.0	VIO
Private	4/14/2018	0:05:43	A	30		PA44		81.9	79.0	VIO
Kaiser Air, Inc.	4/14/2018	23:56:53	D	30		B735		90.9	79.0	VIO
Ava International LLC	4/15/2018	4:06:12	A	30		CL60		89.3	79.0	VIO
Polar Equipment LLC	4/15/2018	22:16:07	A	30		FA50		94.6	90.0	VIO
JetBlue Airways	4/16/2018	0:38:40	A	30	JBU943	A320	FLL	93.6	79.0	VIO + Alt Enf
Delta Air Lines / SkyWest Airlines	4/16/2018	23:15:16	A	30	SKW4645	E75L	SLC	93.0	79.0	VIO
JetBlue Airways	4/17/2018	0:13:57	A	30	JBU943	A320	FLL	95.6	79.0	VIO + Alt Enf
JetBlue Airways	4/17/2018	0:41:34	A	30	JBU531	A320	SLC	94.3	79.0	VIO + Alt Enf
JetBlue Airways	4/17/2018	1:34:46	D	30	JBU1436	A320	SFO	87.1	79.0	VIO + Alt Enf
JetBlue Airways	4/17/2018	2:04:12	D	30	JBU726	A320	SJC	76.3	79.0	VIO + Alt Enf
Jet Select LLC	4/18/2018	1:03:11	A	30		GLF4		88.6	79.0	VIO
Catalina Flying Boats	4/19/2018	6:54:47	A	30		C208		94.1	90.0	VIO
JetBlue Airways	4/19/2018	22:06:44	D	30	JBU14	A320	JFK	93.7	90.0	VIO
Skechers USA Inc	4/21/2018	6:53:02	D	30		GL5T		92.1	90.0	VIO
JetBlue Airways	4/23/2018	0:34:45	A	25R	JBU943	A320	FLL	92.7	n/a	VIO + Alt Enf
JetBlue Airways	4/23/2018	23:46:56	A	30	JBU943	A320	FLL	93.4	79.0	VIO + Alt Enf
JetBlue Airways	4/25/2018	23:47:10	D	30	JBU14	A320	JFK	95.7	79.0	VIO + Alt Enf

AIRCRAFT NOISE VIOLATORS

April 2018

OWNERNAME	DATE	TIME	A/D	RWY	FLIGHT #	A/C TYPE	ORIG/DEST	SEL	LIMIT	STATUS
JetBlue Airways	4/26/2018	0:21:45	D	30	JBU1436	A320	SFO	90.1	79.0	VIO + Alt Enf
Private	4/29/2018	0:05:14	A	30		E135		92.4	79.0	VIO

DEFINITIONS:

A/C Type — Aircraft Type

RWY — Runway

A/D/G — Arrival / Departure / Ground Operation

SEL — SENEL — Single Event Noise Exposure Level (dBA)

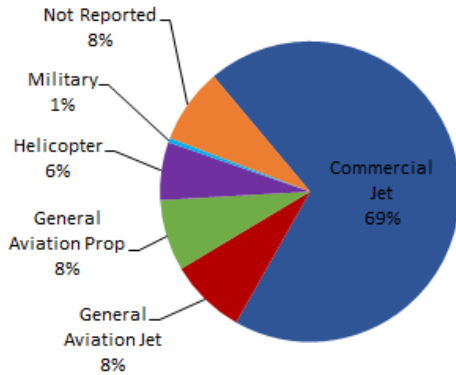
ALT ENF — Alternative Enforcement

VIO — Violation

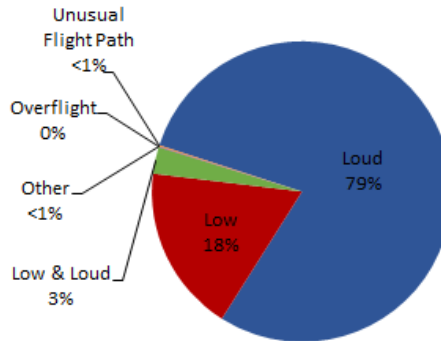
LGB AIRCRAFT NOISE COMPLAINTS

April 2018

Complaints by Aircraft Types



Complaints by Concern



Complaints by Zip Code¹

Zip Code	Complaints	Units
90275	1	1
90277	1	1
90713	8	2
90740	13	1
90805	33	2
90807	43	14
90808	7	5
90814	1	1
90815	6	5
92612	22	1
92626	561	3
92646	12	3
92647	95	4
92648	182	7
92649	468	7
92870	1	1
Not Reported	6	4
Grand Total	1,460	62

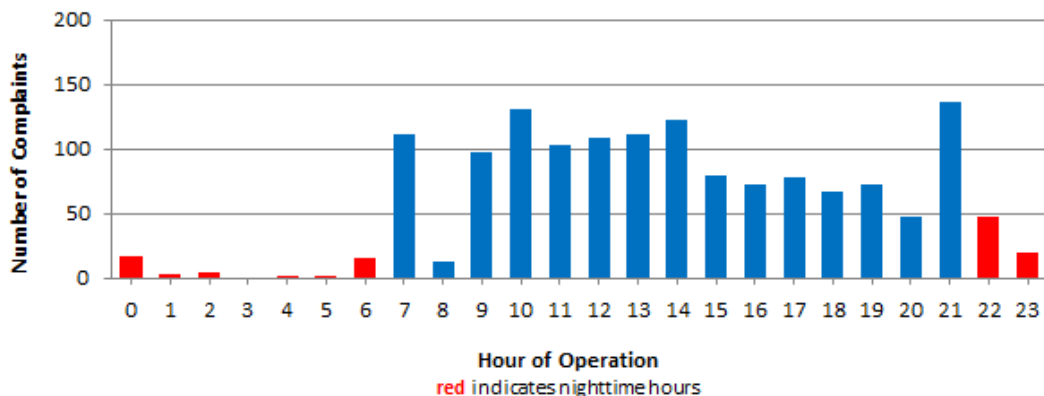
Long Beach Residents' Helicopter Complaints Submitted to FAA²

Zip Code	Individual Complaints	Number of Individuals	Anonymous Complaints	Total Complaints
90802	0	n/a	19	19
90803	219	9	124	343
90804	2	1	0	2
90808	1	1	3	4
90813	0	n/a	1	1
90814	4	2	189	193
90815	1	1	0	1
Grand Total	227	14	336	563

¹ These data include data submitted directly to Long Beach Airport and does not include data submitted to FAA.

² These data reflect helicopter noise complaints submitted directly to FAA.

Complaints by Time of Operation



[THIS PAGE INTENTIONALLY LEFT BLANK]



long beach airport



Long Beach Airport

4100 E. Donald Douglas Drive, Long Beach, CA 90808

www.lgb.org • lgbapt@longbeach.gov

Administration • (562) 570-2619