

Airport Advisory Commission

Wayne Chaney Sr.
Chair

Jeffrey Anderson
Vice Chair

Alvaro Castillo

Hal Gosling

Rita Nayak

Phil Ramsdale

Jeff Rowe

Roland B. Scott, Jr.



Airport Management

Jess L. Romo, A.A.E.
Airport Director

Juan López-Rios
Deputy Airport Director

Ken Mason
Executive Assistant

Claudia Lewis
Manager of Administration
& Finance

Fred Pena
Airport Operations Manager

Ambi Thurai
Engineering Officer

Dale Worsham
Administrative Officer

Karl Zittel
Airsides Operations Officer

Stephanie Montuya-Morisky
Public Affairs Officer

Matthew Brookes
Airport Properties Officer

Ron Reeves
Noise & Environmental Affairs
Officer



Long Beach Airport Monthly Noise Report March 2018

COMMERCIAL AIRCRAFT LATE NIGHT ACTIVITY
LGB Current Month & Calendar Year-To-Date Statistics (10 PM- 7AM)
March 2018

				March			CY-T-D 2018		
10PM - 11PM Activity	2018	2017	Change	2018	2017	Change			
Air Carrier & Commuter Operations	3,206	3,113	3.0%	9,197	8,728	5.4%			
American/Mesa/SkyWest Airlines	2	1	100.0%	10	6	66.7%			
Delta/SkyWest Airlines	4	3	33.3%	9	11	-18.2%			
FedEx	0	0		0	0				
JetBlue Airways	53	35	51.4%	121	114	6.1%			
Southwest Airlines	0	0		1	7	-85.7%			
UPS	0	0		0	0				
Subtotal 10PM-11PM	59	39	51.3%	141	138	2.2%			
11PM- 7AM Activity	2018	2017	Change	2018	2017	Change			
American/Mesa/SkyWest Airlines	1	3	-66.7%	2	6	-66.7%			
Delta/SkyWest Airlines	1	0	100.0%	3	2	50.0%			
FedEx	0	0		0	0				
JetBlue Airways	24	15	60.0%	63	61	3.3%			
Southwest Airlines	0	0		0	5	-500.0%			
UPS	0	0		0	0				
Subtotal 11PM-7AM	26	18	44.4%	68	74	-8.1%			
TOTAL	85	57	49.1%	209	212	-1.4%			

Notes:

3.0% (85 of 3,206) of total commercial operations occurred between 10pm - 7am.

2.7 flights - Nightly average for all late night (10:00 PM—7:00 AM) commercial flights, includes unanticipated delays.

0.8 flights - Nightly average for commercial flights after 11 PM.

Of the 85 Late-Night Operations, 22% were due to mechanical issues, 17% were due to air traffic control conditions, 14% were due to poor weather conditions, 11% were due to staffing-related issues, 11% occurred during the five-minute grace period, 9% were due to unknown reasons, 6% were due to ferry flights, 4% were due to explicit air traffic control direction, 2% were due to customer-related issues, 1% were due to weight and balance issues, 1% were due to customer recovery flights, 1% were due to IT issues and 1% were due to miscellaneous issues.

AIRPORT NOISE VIOLATIONS
LGB Current Month & Calendar Year-To-Date Statistics
March 2018

March				CY-T-D 2018		
Air Carrier Noise Violations	2018	2017	Change	2018	2017	Change
American/Mesa Airlines	2	2	0.0%	5	2	150.0%
Delta/SkyWest Airlines	1	0	100.0%	3	1	200.0%
FedEx	0	0		0	0	
JetBlue Airways	29	14	107.1%	78	57	36.8%
Southwest Airlines	0	0		0	3	-300.0%
UPS	0	0		0	0	
Subtotal	32	16	100.0%	86	63	36.5%
Commuter Noise Violations	2018	2017	Change	2018	2017	Change
American/SkyWest Airlines	0	0		0	0	
Delta/SkyWest Airlines	0	0		0	0	
Subtotal	0	0		0	0	
Non-Commercial Noise Violations	2018	2017	Change	2018	2017	Change
All GA, Charter & Other	10	16	-37.5%	33	55	-40.0%
TOTAL	42	32	31.3%	119	118	0.8%
Monetary Fines	2018	2017		2018	2017	
Airport Surcharges	\$10,200	\$2,100		\$16,300	\$7,100	
Consent Decree	\$120,000	\$72,000		\$342,000	\$306,000	
TOTAL	\$130,200	\$74,100		\$358,300	\$313,100	

AIRPORT OPERATIONS
LGB Current Month & Calendar Year-To-Date Statistics
March 2018

March				CY-T-D 2018		
Airport Operations (FAA)	2018	2017	Change	2018	2017	Change
Air Carrier + Commuter Carriers	3,206	3,113	3.0%	9,197	8,728	5.4%
Air Taxi + General Aviation	18,492	23,781	-22.2%	59,847	61,899	-3.3%
Military Operations	141	116	21.6%	367	327	12.2%
Total Aircraft Operations	21,839	27,010	-19.1%	69,411	70,954	-2.2%

Notes:

0.2% (42 of 21,839) of the Airport's total aircraft operations (Commercial & GA) resulted in an aircraft noise violation.
1.0% (32 of 3,206) of the Airport's Commercial operations (Commercial & Commuter) resulted in an aircraft noise violation.

AIRCRAFT NOISE VIOLATORS

March 2018

OWNERNAME	DATE	TIME	A/D	RWY	FLIGHT #	A/C TYPE	ORIG/DEST	SEL	LIMIT	STATUS
JetBlue Airways	3/1/2018	22:18:51	A	30	JBU679	A320	LAS	93.3	90.0	VIO
OCR Aviation	3/1/2018	23:15:14	A	30		BE9T		81.8	79.0	VIO
JetBlue Airways	3/2/2018	22:06:02	D	30	JBU1822	A320	PDX	93.4	90.0	VIO
JetBlue Airways	3/2/2018	23:18:43	A	30	JBU943	A320	FLL	92.8	79.0	VIO + Alt Enf
JetBlue Airways	3/3/2018	0:01:20	A	30	JBU179	A320	LAS	94.3	79.0	VIO + Alt Enf
JetBlue Airways	3/3/2018	0:56:31	D	30	JBU1436	A320	SFO	89.5	79.0	VIO + Alt Enf
JetBlue Airways	3/3/2018	1:08:31	A	30	JBU365	A320	SMF	94.3	79.0	VIO + Alt Enf
American Airlines	3/3/2018	22:09:05	A	30	ASH5965	CRJ9	PHX	92.3	90.0	VIO
JetBlue Airways	3/3/2018	22:13:39	A	30	JBU405	A320	BOS	94.1	90.0	VIO
JetBlue Airways	3/6/2018	23:13:23	A	25R	JBU679	A320	LAS	91.2	n/a	VIO + Alt Enf
JetBlue Airways	3/10/2018	0:47:17	D	12	JBU504	A320	BOS	92.3	79.0	VIO + Alt Enf
JetBlue Airways	3/10/2018	22:19:25	A	12	JBU943	A320	FLL	94.7	90.0	VIO
JetBlue Airways	3/12/2018	22:45:22	A	30	JBU6108	A321	LAX	92.1	90.0	VIO
JetBlue Airways	3/12/2018	22:50:05	A	30	JBU6104	A321	LAX	93.0	90.0	VIO
Sierra West Airlines	3/12/2018	23:57:24	A	30		SW4		84.9	79.0	VIO
JetBlue Airways	3/13/2018	1:14:45	A	30	JBU6105	A321	SFO	92.2	79.0	VIO + Alt Enf
Sierra West Airlines	3/13/2018	1:47:03	D	30		SW4		82.7	79.0	VIO
My Live Connections LLC	3/13/2018	4:07:52	A	30		ASTR		90.2	79.0	VIO
Bravo Owner LLC	3/13/2018	23:08:10	A	30		C550		88.5	79.0	VIO
Private	3/14/2018	23:43:01	D	30		GLF5		92.8	79.0	VIO
JetBlue Airways	3/15/2018	0:21:45	A	30	JBU1013	A320	JFK	93.2	79.0	VIO + Alt Enf
Private	3/15/2018	23:11:55	D	30		PA44		82.1	79.0	VIO
Private	3/15/2018	23:15:04	D	30		PA44		89.0	79.0	VIO
JetBlue Airways	3/15/2018	23:20:22	D	30	JBU944	A320	FLL	94.8	79.0	VIO + Alt Enf
Delta Air Lines / SkyWest Airlines	3/16/2018	23:22:10	A	30	SKW4645	CRJ9	SLC	90.1	79.0	VIO
JetBlue Airways	3/17/2018	23:05:51	A	30	JBU1013	A320	JFK	93.9	79.0	VIO + Alt Enf
American Airlines	3/18/2018	23:37:20	A	30	ASH5965	CRJ9	PHX	92.1	79.0	VIO
JetBlue Airways	3/20/2018	23:11:52	D	30	JBU944	A320	FLL	93.0	79.0	VIO + Alt Enf
JetBlue Airways	3/20/2018	23:14:44	D	30	JBU448	A320	OAK	87.8	79.0	VIO + Alt Enf
JetBlue Airways	3/20/2018	23:27:22	A	30	JBU1635	A320	SFO	93.0	79.0	VIO + Alt Enf
JetBlue Airways	3/20/2018	23:34:46	D	30	JBU1436	A320	SFO	87.4	79.0	VIO + Alt Enf

AIRCRAFT NOISE VIOLATORS

March 2018

OWNERNAME	DATE	TIME	A/D	RWY	FLIGHT #	A/C TYPE	ORIG/DEST	SEL	LIMIT	STATUS
JetBlue Airways	3/22/2018	22:56:04	A	30	JBU679	A320	LAS	93.3	90.0	VIO
Redgate Partners LLC	3/22/2018	23:18:22	A	30		CL60		88.9	79.0	VIO
JetBlue Airways	3/24/2018	23:10:32	D	30	JBU14	A320	JFK	92.7	79.0	VIO + Alt Enf
JetBlue Airways	3/28/2018	0:46:50	A	30	JBU679	A320	LAS	92.9	79.0	VIO + Alt Enf
JetBlue Airways	3/29/2018	0:13:38	A	25R	JBU405	A320	BOS	93.6	n/a	VIO + Alt Enf
Grayling Trout & Company LLC	3/29/2018	23:05:46	A	30		C501		83.2	79.0	VIO
JetBlue Airways	3/30/2018	22:23:58	A	30	JBU1013	A320	JFK	93.1	90.0	VIO
JetBlue Airways	3/30/2018	23:27:38	A	30	JBU365	A320	SMF	93.6	79.0	VIO + Alt Enf
JetBlue Airways	3/31/2018	0:24:11	D	30	JBU14	A320	JFK	93.8	79.0	VIO + Alt Enf
JetBlue Airways	3/31/2018	1:07:30	D	30	JBU6304	A320	LAS	90.5	79.0	VIO + Alt Enf
JetBlue Airways	3/31/2018	22:15:53	D	30	JBU504	A320	BOS	94.0	90.0	VIO

DEFINITIONS:

A/C Type — Aircraft Type

RWY — Runway

A/D/G — Arrival / Departure / Ground Operation

SEL — SENEL — Single Event Noise Exposure Level (dBA)

ALT ENF — Alternative Enforcement

VIO — Violation

AIR CARRIER NOISE BUDGET PERFORMANCE

April 2017 - March 2018

RMT #	NOISE BUDGET	ACTUAL	PERCENT BUDGET USED
9	70.7	64.7	91.5%
10	84.6	87.4	103.3%

DEFINITIONS:

RMT — Remote Monitoring Terminal

TOTAL NOISE BUDGET PERFORMANCE

April 2017 - March 2018

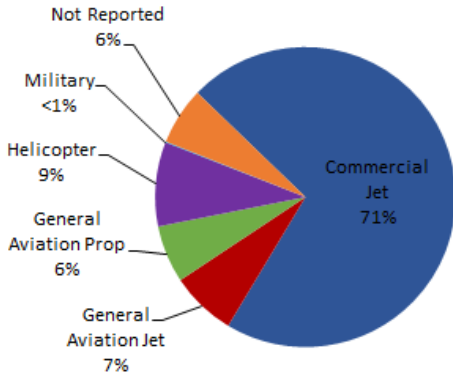
RMT #	NOISE BUDGET	ACTUAL	PERCENT BUDGET USED
9	102.7	72.8	70.8%
10	120.9	101.4	83.9%

Source: LGB staff calculations

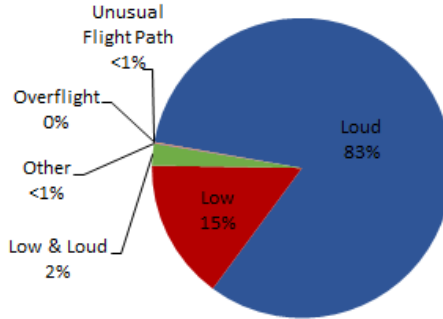
LGB AIRCRAFT NOISE COMPLAINTS

March 2018

Complaints by Aircraft Types



Complaints by Concern



Complaints by Zip Code¹

Zip Code	Complaints	Units
90501	1	1
90712	1	1
90713	7	1
90740	9	1
90805	62	2
90807	51	10
90808	5	2
90815	5	4
92612	4	1
92626	546	2
92646	8	2
92647	113	4
92648	117	7
92649	343	5
92870	1	1
Not Reported	2	2
Grand Total	1,275	46

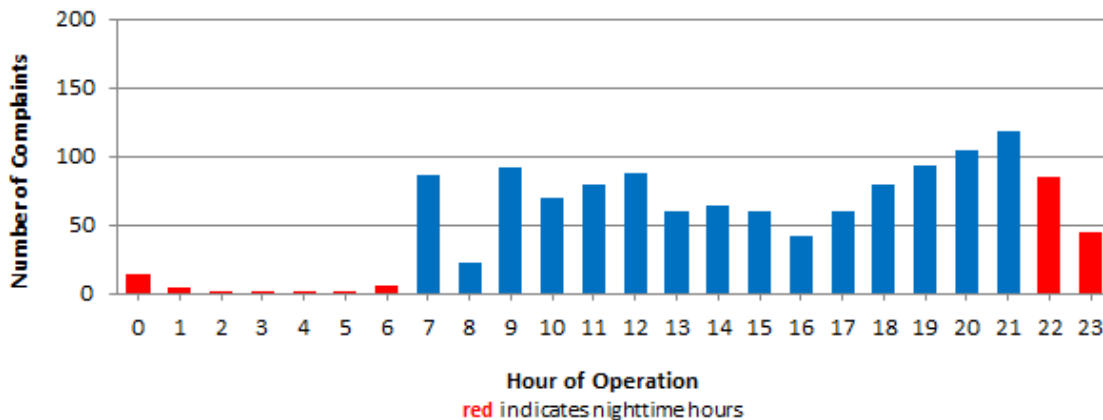
Long Beach Residents' Helicopter Complaints Submitted to FAA²

Zip Code	Individual Complaints	Number of Individuals	Anonymous Complaints	Total Complaints
90802	4	2	18	22
90803	227	6	85	312
90804	2	1	1	3
90808	0	n/a	9	9
90814	0	n/a	134	134
Grand Total	233	9	247	480

¹ These data include data submitted directly to Long Beach Airport and does not include data submitted to FAA.

² These data reflect helicopter noise complaints submitted directly to FAA.

Complaints by Time of Operation



[THIS PAGE INTENTIONALLY LEFT BLANK]



long beach airport



Long Beach Airport

4100 E. Donald Douglas Drive, Long Beach, CA 90808

www.lgb.org • lgbapt@longbeach.gov

Administration • (562) 570-2619