

Airport Advisory Commission

Wayne Chaney Sr.
Chair

Jeffrey Anderson
Vice Chair

Alvaro Castillo

Rita Nayak

Phil Ramsdale

Geetanjali Reuben

Jeff Rowe

Roland B. Scott, Jr.

Mary Sophiea

Airport Management

Jess L. Romo, A.A.E.
Airport Director

Juan López-Ríos
Deputy Airport Director

Ken Mason
Executive Assistant

Claudia Lewis
Manager of Administration
& Finance

Ron Reeves
Airport Operations Manager

Ambi Thurai
Engineering Officer

Dale Worsham
Administrative Officer

Karl Zittel
Airside Operations Officer

Stephanie Montuya-Morisky
Public Affairs Officer

Matthew Brookes
Airport Properties Officer

Scott Garrett
Facilities Management Officer

Mony Chhey
Financial Services Officer

Ryan McMullan
Noise & Environmental Affairs
Officer



long beach
airport



Long Beach Airport Monthly Noise Report November 2018

COMMERCIAL AIRCRAFT LATE NIGHT ACTIVITY
LGB Current Month & Calendar Year-To-Date Statistics (10 PM- 7AM)
November 2018

November				CY-T-D 2018		
10PM - 11PM Activity	2018	2017	Change	2018	2017	Change
Air Carrier & Commuter Operations	2,531	2,985	-15.2%	32,203	32,890	-2.1%
American/Mesa/SkyWest Airlines	0	1	-100.0%	29	19	52.6%
Delta/SkyWest/Compass Airlines	1	1	0.0%	19	25	-24.0%
FedEx	0	0		0	0	
Hawaiian Airlines	0	0		2	0	200.0%
JetBlue Airways	8	22	-63.6%	291	410	-29.0%
Southwest Airlines	0	1	-100.0%	10	17	-41.2%
UPS	1	0	100.0%	1	0	100.0%
Subtotal 10PM-11PM	10	25	-60.0%	352	471	-25.3%
11PM- 7AM Activity	2018	2017	Change	2018	2017	Change
American/Mesa/SkyWest Airlines	0	0		15	11	36.4%
Delta/SkyWest/Compass Airlines	1	0	100.0%	6	6	0.0%
FedEx	0	0		0	0	
Hawaiian Airlines	1	0	100.0%	4	0	400.0%
JetBlue Airways	7	14	-50.0%	180	233	-22.7%
Southwest Airlines	0	0		0	5	-500.0%
UPS	1	0	100.0%	1	0	100.0%
Subtotal 11PM-7AM	10	14	-28.6%	206	255	-19.2%
TOTAL	20	39	-48.7%	558	726	-23.1%

Notes:

0.8% (20 of 2,531) of total commercial operations occurred between 10pm - 7am.

0.7 flights - Nightly average for all late night (10:00 PM—7:00 AM) commercial flights, includes unanticipated delays.

0.3 flights - Nightly average for commercial flights after 11 PM.

Of the 20 Late-Night Operations, 25% were due to air traffic control conditions, 20% were due to mechanical issues, 15% were due to staffing-related issues, 15% occurred during the five-minute grace period, 15% were due to unknown reasons and 10% were due to poor weather conditions.

AIRPORT NOISE VIOLATIONS						
LGB Current Month & Calendar Year-To-Date Statistics						
November 2018						
November				CY-T-D 2018		
Air Carrier Noise Violations	2018	2017	Change	2018	2017	Change
American/Mesa Airlines	0	1	-100.0%	17	7	142.9%
Delta/SkyWest/Compass	0	0		5	4	25.0%
FedEx	0	0		0	0	
Hawaiian Airlines	1	0	100.0%	4	0	400.0%
JetBlue Airways	4	14	-71.4%	205	233	-12.0%
Southwest Airlines	0	0		0	3	-300.0%
UPS	1	0	100.0%	1	0	100.0%
Subtotal	6	15	-60.0%	232	247	-6.1%
Commuter Noise Violations	2018	2017	Change	2018	2017	Change
American/SkyWest Airlines	0	0		0	0	
Delta/SkyWest/Compass	0	0		0	0	
Subtotal	0	0		0	0	
Non-Commercial Noise Violations	2018	2017	Change	2018	2017	Change
All GA, Charter & Other	10	17	-41.2%	122	163	-25.2%
TOTAL	16	32	-50.0%	354	410	-13.7%
Monetary Fines	2018	2017		2018	2017	
Airport Surcharges	\$2,200	\$1,200		\$62,500	\$23,100	
Consent Decree	\$24,000	\$78,000		\$960,000	\$1,206,000	
TOTAL	\$26,200	\$79,200		\$1,022,500	\$1,229,100	

AIRPORT OPERATIONS						
LGB Current Month & Calendar Year-To-Date Statistics						
November 2018						
November				CY-T-D 2018		
Airport Operations (FAA)	2018	2017	Change	2018	2017	Change
Air Carrier + Commuter Carriers	2,531	2,985	-15.2%	32,203	32,890	-2.1%
Air Taxi + General Aviation	21,057	24,174	-12.9%	217,941	261,673	-16.7%
Military Operations	91	87	4.6%	1,326	1,262	5.1%
Total Aircraft Operations	23,679	27,246	-13.1%	251,470	295,825	-15.0%

Notes:

0.1% (20 of 23,926) of the Airport's total aircraft operations (Commercial & GA) resulted in an aircraft noise violation.
0.3% (8 of 2,614) of the Airport's Commercial operations (Commercial & Commuter) resulted in an aircraft noise violation.

AIRCRAFT NOISE VIOLATORS

November 2018

OWNERNAME	DATE	TIME	A/D	RWY	FLIGHT #	A/C TYPE	ORIG/DEST	SEL	LIMIT	STATUS
NLT LLC	11/7/2018	23:52:08	A	30		C25A		90.9	79.0	VIO
JetBlue Airways	11/9/2018	23:27:32	A	30	JBU679	A320	LAS	90.3	79.0	VIO + Alt Enf
Swift Air LLC	11/12/2018	23:41:36	D	30		B734		93.2	79.0	VIO
Hawaiian Airlines	11/13/2018	23:53:12	A	30	HAL70	A21N	HNL	91.3	79.0	VIO
JetBlue Airways	11/16/2018	1:51:05	A	26R	JBU1013	A320	JFK	92.5	n/a	VIO + Alt Enf
Private	11/16/2018	8:52:52	D	26R		HXB		94.1	92.0	VIO
JetBlue Airways	11/20/2018	23:51:02	A	30	JBU679	A320	LAS	93.9	79.0	VIO + Alt Enf
Monte Carlo Associates LLC	11/21/2018	11:11:52	D	26R		F900		95.4	92.0	VIO
Omega Warbirds	11/24/2018	14:07:28	D	26R		SNJ5		97.1	92.0	VIO
JetBlue Airways	11/25/2018	23:41:37	A	30	JBU1013	A320	JFK	93.2	79.0	VIO + Alt Enf
Delta / SkyWest / Compass Airlines	11/28/2018	0:55:06	A	30	CPZ5724	E75L	SLC	93.9	79.0	VIO
Urban Aviation Services LLC	11/29/2018	5:44:31	A	30		PA46		83.9	79.0	VIO
Merlo Logistics LLC	11/29/2018	23:18:10	D	30		H25B		91.3	79.0	VIO
Aspen Air Leasing LLC	11/29/2018	23:28:49	D	30		C25B		81.2	79.0	VIO
Private	11/30/2018	16:09:16	D	26R		PA32		95.3	92.0	VIO
UPS	11/30/2018	23:57:15	D	30	UPS905	B763	SDF	93.7	79.0	VIO

DEFINITIONS:

A/C Type — Aircraft Type

RWY — Runway

A/D— Arrival / Departure

SEL — SENEL — Single Event Noise Exposure Level (dBA)

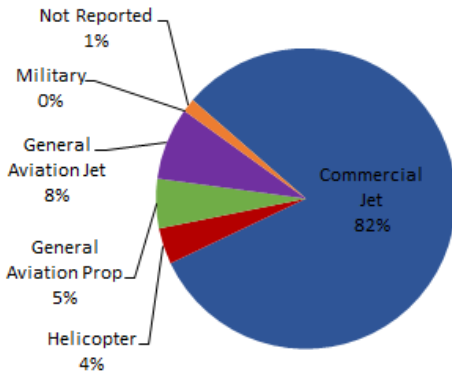
ALT ENF — Alternative Enforcement

VIO—Violation

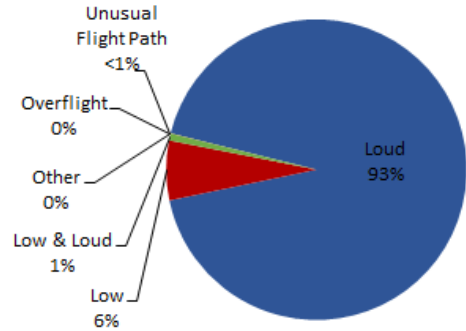
LGB AIRCRAFT NOISE COMPLAINTS

November 2018

Complaints by Aircraft Types



Complaints by Concern



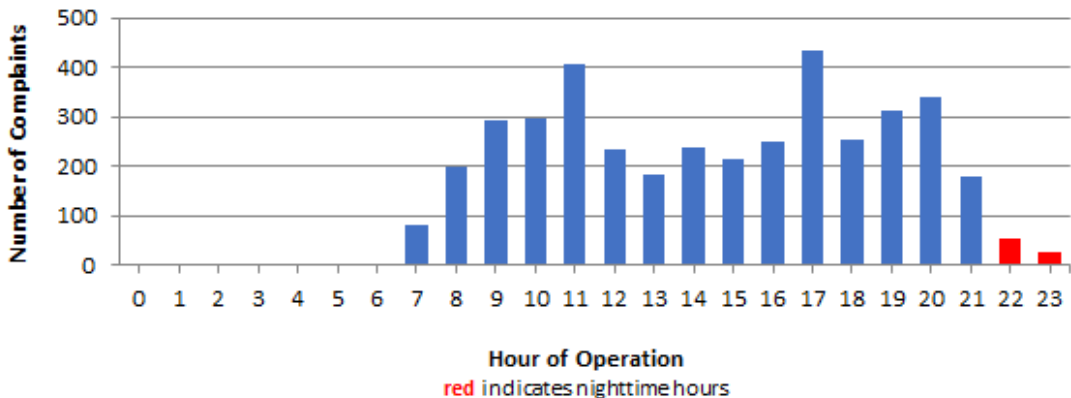
Complaints by Zip Code ¹		
Zip Code	Complaints	Units
90274	1	1
90278	332	2
90713	2	2
90740	8	2
90755	1	1
90805	26	1
90807	16	6
90808	3	2
90815	1	1
92612	24	1
92620	1	1
92626	429	1
92646	21	2
92647	934	7
92648	1,210	12
92649	998	9
92651	3	1
92660	1	1
Not Reported	1	1
Grand Total	4,012	54

Long Beach Residents' Helicopter Complaints Submitted to FAA ²				
Zip Code	Individual Complaints	Number of Individuals	Anonymous Complaints	Total Complaints
90802	0	n/a	23	23
90803	0	n/a	36	36
90808	0	n/a	5	5
90814	2	1	0	2
Grand Total	2	1	64	66

¹ These data include data submitted directly to Long Beach Airport and does not include data submitted to FAA.

² These data reflect helicopter noise complaints submitted directly to FAA.

Complaints by Time of Operation





long beach airport



Long Beach Airport

4100 E. Donald Douglas Drive, Long Beach, CA 90808

www.lgb.org • lgbapt@longbeach.gov

Administration • (562) 570-2619