

## Airport Advisory Commission

Wayne Chaney Sr.  
Chair

Jeffrey Anderson  
Vice Chair

Alvaro Castillo

Hal Gosling

Phil Ramsdale

Jeff Rowe

Roland B. Scott, Jr.

Karen Sherman

## Airport Management

Jess L. Romo, A.A.E.  
Airport Director

Juan López-Rios  
Deputy Airport Director

Ken Mason  
Executive Assistant

Claudia Lewis  
Manager of Administration  
& Finance

Fred Pena  
Airport Operations Manager

Ambi Thurai  
Engineering Officer

Dale Worsham  
Administrative Officer

Karl Zittel  
Airside Operations Officer

Stephanie Montuya-Morisky  
Public Affairs Officer

Ron Reeves  
Noise & Environmental Affairs  
Officer



long beach  
airport



# Long Beach Airport Monthly Noise Report August 2017

**COMMERCIAL AIRCRAFT LATE NIGHT ACTIVITY**  
**LGB Current Month & Calendar Year-To-Date Statistics (10 PM- 7AM)**  
**August 2017**

| August                                       |              |              |               | CY-T-D 2017   |               |               |
|--|--------------|--------------|---------------|---------------|---------------|---------------|
| 10PM - 11PM Activity                         | 2017         | 2016         | Change        | 2017          | 2016          | Change        |
| <b>Air Carrier &amp; Commuter Operations</b> | <b>3,096</b> | <b>2,553</b> | <b>21.3%</b>  | <b>23,810</b> | <b>16,949</b> | <b>40.5%</b>  |
| American/Mesa Airlines                       | 2            | 2            | 0.0%          | 13            | 13            | 0.0%          |
| Delta/SkyWest Airlines                       | 5            | 0            | 500.0%        | 22            | 16            | 37.5%         |
| FedEx  | 0            | 0            |               | 0             | 0             |               |
| JetBlue Airways                              | 48           | 22           | 118.2%        | 333           | 174           | 91.4%         |
| Southwest Airlines                           | 1            | 0            | 100.0%        | 15            | 1             | 1,400.0%      |
| UPS  | 0            | 0            |               | 0             | 0             |               |
| <b>Subtotal 10PM-11PM</b>                    | <b>56</b>    | <b>24</b>    | <b>133.3%</b> | <b>383</b>    | <b>204</b>    | <b>87.7%</b>  |
| <b>11PM- 7AM Activity</b>                    | <b>2017</b>  | <b>2016</b>  | <b>Change</b> | <b>2017</b>   | <b>2016</b>   | <b>Change</b> |
| American/Mesa Airlines                       | 1            | 1            | 0.0%          | 11            | 21            | -47.6%        |
| Delta/SkyWest Airlines                       | 0            | 0            |               | 6             | 3             | 100.0%        |
| FedEx  | 0            | 0            |               | 0             | 0             |               |
| JetBlue Airways                              | 29           | 19           | 52.6%         | 185           | 96            | 92.7%         |
| Southwest Airlines                           | 0            | 1            | -100.0%       | 5             | 1             | 400.0%        |
| UPS  | 0            | 0            |               | 0             | 0             |               |
| <b>Subtotal 11PM-7AM</b>                     | <b>30</b>    | <b>21</b>    | <b>42.9%</b>  | <b>207</b>    | <b>121</b>    | <b>71.1%</b>  |
| <b>TOTAL</b>                                 | <b>86</b>    | <b>45</b>    | <b>91.1%</b>  | <b>590</b>    | <b>325</b>    | <b>81.5%</b>  |

Notes:

2.8% (86 of 3,096) of total commercial operations occurred between 10pm - 7am.

2.8 flights - Nightly average for all late night (10:00 PM—7:00 AM) commercial flights, includes unanticipated delays.

1.0 flights - Nightly average for commercial flights after 11 PM.

Of the 86 Late-Night Operations, 31% were due to poor weather conditions, 27% were due to maintenance issues, 16% occurred during the 5-minute grace period, 13% were due to air traffic control-related issues, 7% were due to unknown reasons, 5% were due to staffing-related issues and 1% were due to fueling-related issues.

**AIRPORT OPERATIONS & AIRCRAFT NOISE VIOLATIONS**  
**LGB Current Month & Calendar Year-To-Date Statistics**  
**August 2017**

| August                                 |                  |                 |               | CY-T-D 2017      |                  |                |
|--|------------------|-----------------|---------------|------------------|------------------|----------------|
| <b>Air Carrier Noise Violations</b>    | <b>2017</b>      | <b>2016</b>     | <b>Change</b> | <b>2017</b>      | <b>2016</b>      | <b>Change</b>  |
| American/Mesa Airlines                 | 0                | 0               |               | 6                | 4                | 50.0%          |
| Delta/SkyWest Airlines                 | 0                | 0               |               | 4                | 4                | 0.0%           |
| FedEx                                  | 0                | 0               |               | 0                | 0                |                |
| JetBlue Airways                        | 24               | 9               | 166.7%        | 181              | 89               | 103.4%         |
| Southwest Airlines                     | 0                | 0               |               | 3                | 0                | 300.0%         |
| UPS                                    | 0                | 0               |               | 0                | 1                | -100.0%        |
| <b>Subtotal</b>                        | <b>24</b>        | <b>9</b>        | <b>166.7%</b> | <b>194</b>       | <b>98</b>        | <b>98.0%</b>   |
| <b>Commuter Noise Violations</b>       | <b>2017</b>      | <b>2016</b>     | <b>Change</b> | <b>2017</b>      | <b>2016</b>      | <b>Change</b>  |
| American/Mesa Airlines                 | 0                | 0               |               | 0                | 0                |                |
| Delta/SkyWest Airlines                 | 0                | 0               |               | 0                | 1                | -100.0%        |
| <b>Subtotal</b>                        | <b>0</b>         | <b>0</b>        |               | <b>0</b>         | <b>1</b>         | <b>-100.0%</b> |
| <b>Non-Commercial Noise Violations</b> | <b>2017</b>      | <b>2016</b>     | <b>Change</b> | <b>2017</b>      | <b>2016</b>      | <b>Change</b>  |
| All GA, Charter & Other                | 17               | 12              | 41.7%         | 120              | 119              | 0.8%           |
| <b>TOTAL</b>                           | <b>41</b>        | <b>21</b>       | <b>95.2%</b>  | <b>314</b>       | <b>218</b>       | <b>44.0%</b>   |
| <b>Monetary Fines</b>                  |                  |                 |               |                  |                  |                |
| Airport Surcharges                     | \$1,900          | \$1,200         |               | \$18,200         | \$12,400         |                |
| Consent Decree                         | \$138,000        | \$54,000        |               | \$942,000        | \$414,000        |                |
| <b>TOTAL</b>                           | <b>\$139,900</b> | <b>\$55,200</b> |               | <b>\$960,200</b> | <b>\$426,400</b> |                |

**AIRPORT OPERATIONS & AIRCRAFT NOISE VIOLATIONS**  
**LGB Current Month & Calendar Year-To-Date Statistics**  
**August 2017**

| August                           |               |               |               | CY-T-D 2017    |                |               |
|----------------------------------|---------------|---------------|---------------|----------------|----------------|---------------|
| <b>Airport Operations (FAA)</b>  | <b>2017</b>   | <b>2016</b>   | <b>Change</b> | <b>2017</b>    | <b>2016</b>    | <b>Change</b> |
| Air Carrier + Commuter Carriers  | 3,096         | 2,553         | 21.3%         | 23,810         | 16,949         | 40.5%         |
| Air Taxi + General Aviation      | 25,624        | 27,695        | -7.5%         | 187,475        | 194,276        | -3.5%         |
| Military Operations              | 102           | 104           | -1.9%         | 950            | 960            | -1.0%         |
| <b>Total Aircraft Operations</b> | <b>28,822</b> | <b>30,352</b> | <b>-5.0%</b>  | <b>212,235</b> | <b>212,185</b> | <b>0.0%</b>   |

Notes:

0.1% (41 of 28,822) of the Airport's total aircraft operations (Commercial & GA) resulted in an aircraft noise violation.  
0.8% (24 of 3,096) of the Airport's Commercial operations (Commercial & Commuter) resulted in an aircraft noise violation.

# AIRCRAFT NOISE VIOLATORS

## August 2017

| OWNERNAME                            | DATE      | TIME     | A/D | RWY | A/C TYPE | SEL  | LIMIT | STATUS        |
|--------------------------------------|-----------|----------|-----|-----|----------|------|-------|---------------|
| JetBlue Airways Corporation          | 8/2/2017  | 0:52:26  | A   | 30  | A320     | 94   | 79.0  | VIO + Alt Enf |
| N767CJ LLC                           | 8/2/2017  | 4:48:59  | A   | 30  | H25C     | 89.3 | 79.0  | VIO           |
| JetBlue Airways Corporation          | 8/2/2017  | 23:05:06 | A   | 25R | A320     | 94.1 | n/a   | VIO + Alt Enf |
| JetBlue Airways Corporation          | 8/3/2017  | 0:28:27  | A   | 25R | A320     | 92.1 | n/a   | VIO + Alt Enf |
| JetBlue Airways Corporation          | 8/4/2017  | 23:11:34 | D   | 30  | A320     | 94.6 | 79.0  | VIO + Alt Enf |
| SF1 Holdings LLC                     | 8/5/2017  | 23:10:54 | D   | 30  | F2TH     | 88.2 | 79.0  | VIO           |
| JetBlue Airways Corporation          | 8/7/2017  | 23:13:51 | D   | 30  | A320     | 88.1 | 79.0  | VIO + Alt Enf |
| JetBlue Airways Corporation          | 8/7/2017  | 23:25:24 | A   | 30  | A320     | 94   | 79.0  | VIO + Alt Enf |
| JetBlue Airways Corporation          | 8/8/2017  | 23:13:02 | D   | 30  | A320     | 91.3 | 79.0  | VIO + Alt Enf |
| JetBlue Airways Corporation          | 8/9/2017  | 23:56:29 | D   | 30  | A320     | 94.7 | 79.0  | VIO + Alt Enf |
| Calchem Transportation LLC           | 8/10/2017 | 23:17:09 | D   | 30  | LJ45     | 85.9 | 79.0  | VIO           |
| JetBlue Airways Corporation          | 8/10/2017 | 23:28:41 | A   | 30  | A320     | 94   | 79.0  | VIO + Alt Enf |
| Private                              | 8/14/2017 | 0:14:00  | A   | 30  | PA44     | 83.4 | 79.0  | VIO           |
| BB&T Equipment Finance Corp          | 8/14/2017 | 5:43:04  | D   | 30  | GLF5     | 87.5 | 79.0  | VIO           |
| 44 October 563 LLC                   | 8/14/2017 | 22:09:03 | D   | 30  | BE40     | 95.7 | 90.0  | VIO           |
| JetBlue Airways Corporation          | 8/15/2017 | 23:09:41 | D   | 30  | A320     | 95.7 | 79.0  | VIO + Alt Enf |
| JetBlue Airways Corporation          | 8/15/2017 | 23:15:02 | D   | 30  | A320     | 92.1 | 79.0  | VIO + Alt Enf |
| Trinity Broadcasting of Florida Inc. | 8/16/2017 | 5:15:15  | D   | 30  | GLEX     | 92.4 | 79.0  | VIO           |
| Island Express Helicopters Inc.      | 8/18/2017 | 13:43:30 | A   | 25R | HELI     | 94.9 | 88.0  | VIO           |
| JetBlue Airways Corporation          | 8/19/2017 | 23:55:36 | A   | 30  | A320     | 93.8 | 79.0  | VIO + Alt Enf |
| Casey Company                        | 8/20/2017 | 2:31:49  | A   | 30  | C56X     | 92.6 | 79.0  | VIO           |
| JetBlue Airways Corporation          | 8/20/2017 | 23:40:51 | A   | 30  | A320     | 93.7 | 79.0  | VIO + Alt Enf |
| JetBlue Airways Corporation          | 8/21/2017 | 0:42:11  | A   | 30  | A320     | 92.9 | 79.0  | VIO + Alt Enf |
| JetBlue Airways Corporation          | 8/21/2017 | 0:47:33  | D   | 30  | A320     | 94.1 | 79.0  | VIO + Alt Enf |
| Flexjet, LLC                         | 8/21/2017 | 5:34:09  | D   | 30  | CL30     | 82.7 | 79.0  | VIO           |
| JetBlue Airways Corporation          | 8/22/2017 | 1:07:51  | A   | 30  | A320     | 93.5 | 79.0  | VIO + Alt Enf |
| Sierra West Airlines                 | 8/22/2017 | 23:18:42 | A   | 30  | SW4      | 91.4 | 79.0  | VIO           |
| JetBlue Airways Corporation          | 8/22/2017 | 23:23:52 | A   | 30  | A320     | 94.1 | 79.0  | VIO + Alt Enf |

# AIRCRAFT NOISE VIOLATORS

## August 2017

| OWNERNAME                   | DATE      | TIME     | A/D | RWY | A/C TYPE | SEL  | LIMIT | STATUS        |
|-----------------------------|-----------|----------|-----|-----|----------|------|-------|---------------|
| Private                     | 8/23/2017 | 23:44:32 | A   | 30  | GLF6     | 89.2 | 79.0  | VIO           |
| Paradigm Air Carriers Inc.  | 8/24/2017 | 23:45:00 | D   | 30  | B752     | 94.2 | 79.0  | VIO           |
| Valley Horizons LLC         | 8/25/2017 | 23:21:52 | A   | 30  | E55P     | 87.6 | 79.0  | VIO           |
| SkyLife Enterprises LLC     | 8/26/2017 | 5:40:15  | D   | 30  | COL4     | 82.2 | 79.0  | VIO           |
| JetBlue Airways Corporation | 8/29/2017 | 22:22:03 | D   | 30  | A320     | 96.8 | 90.0  | VIO           |
| JetBlue Airways Corporation | 8/31/2017 | 0:00:01  | A   | 30  | A320     | 92.9 | 79.0  | VIO + Alt Enf |
| MLW Aviation LLC            | 8/31/2017 | 0:28:08  | D   | 30  | B752     | 95   | 79.0  | VIO           |
| JetBlue Airways Corporation | 8/31/2017 | 0:42:18  | A   | 30  | A320     | 93.1 | 79.0  | VIO + Alt Enf |
| JetBlue Airways Corporation | 8/31/2017 | 1:04:13  | D   | 30  | A320     | 96.4 | 79.0  | VIO + Alt Enf |
| JetBlue Airways Corporation | 8/31/2017 | 1:38:00  | D   | 30  | A320     | 92   | 79.0  | VIO + Alt Enf |
| JetBlue Airways Corporation | 8/31/2017 | 1:59:17  | D   | 30  | A320     | 96.2 | 79.0  | VIO + Alt Enf |
| Jacob Stern & Sons Inc.     | 8/31/2017 | 6:49:14  | A   | 30  | C56X     | 93.8 | 90.0  | VIO           |
| JetBlue Airways Corporation | 8/31/2017 | 23:36:01 | A   | 30  | A320     | 92.9 | 79.0  | VIO + Alt Enf |

**DEFINITIONS:**

**A/C Type** — Aircraft Type

**RWY** — Runway

**A/D/G** — Arrival / Departure / Ground Operation

**SEL** — SENEL — Single Event Noise Exposure Level (dBA)

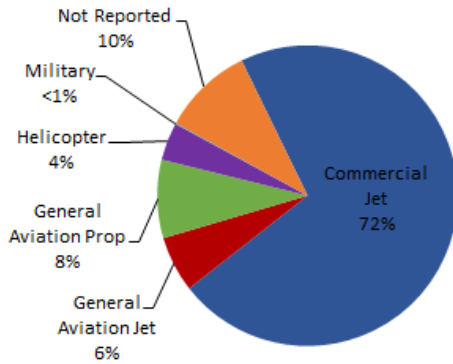
**ALT ENF** — Alternative Enforcement

**VIO** — Violation

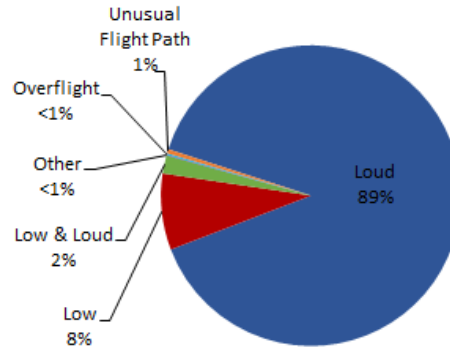
# LGB AIRCRAFT NOISE COMPLAINTS

## August 2017

### Complaints by Aircraft Types



### Complaints by Concern



### Complaints by Zip Code<sup>1</sup>

| Zip Code           | Complaints   | Units      |
|--------------------|--------------|------------|
| 90501              | 1            | 1          |
| 90505              | 1            | 1          |
| 90740              | 24           | 3          |
| 90746              | 1            | 1          |
| 90804              | 1            | 1          |
| 90805              | 32           | 2          |
| 90807              | 118          | 39         |
| 90808              | 16           | 12         |
| 90814              | 1            | 1          |
| 90815              | 12           | 6          |
| 92612              | 52           | 1          |
| 92626              | 437          | 5          |
| 92646              | 5            | 1          |
| 92647              | 3            | 3          |
| 92648              | 128          | 12         |
| 92649              | 494          | 13         |
| Not Reported       | 3            | 3          |
| <b>Grand Total</b> | <b>1,329</b> | <b>105</b> |

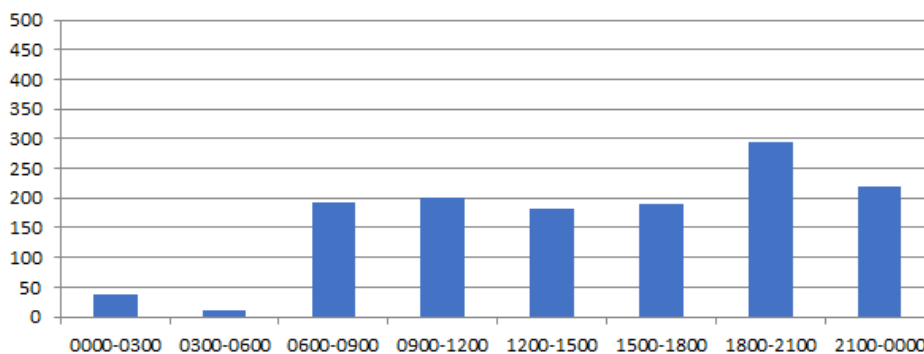
### Long Beach Residents' Helicopter Complaints Submitted to FAA<sup>2</sup>

| Zip Code           | Individual Complaints | Number of Individuals | Anonymous Complaints | Total Complaints |
|--------------------|-----------------------|-----------------------|----------------------|------------------|
| 90802              | 7                     | 3                     | 3                    | 10               |
| 90803              | 367                   | 13                    | 91                   | 458              |
| 90804              | 8                     | 3                     | 3                    | 11               |
| 90808              | 0                     | n/a                   | 16                   | 16               |
| 90814              | 323                   | 9                     | 132                  | 455              |
| <b>Grand Total</b> | <b>705</b>            | <b>28</b>             | <b>245</b>           | <b>950</b>       |

<sup>1</sup> These data include data submitted directly to Long Beach Airport and does not include data submitted to FAA.

<sup>2</sup> These data reflect helicopter noise complaints submitted directly to FAA.

### Complaints by Time





# long beach airport



## Long Beach Airport

4100 E. Donald Douglas Drive, Long Beach, CA 90808

[www.lgb.org](http://www.lgb.org) • [lgbapt@longbeach.gov](mailto:lgbapt@longbeach.gov)

Administration • (562) 570-2619