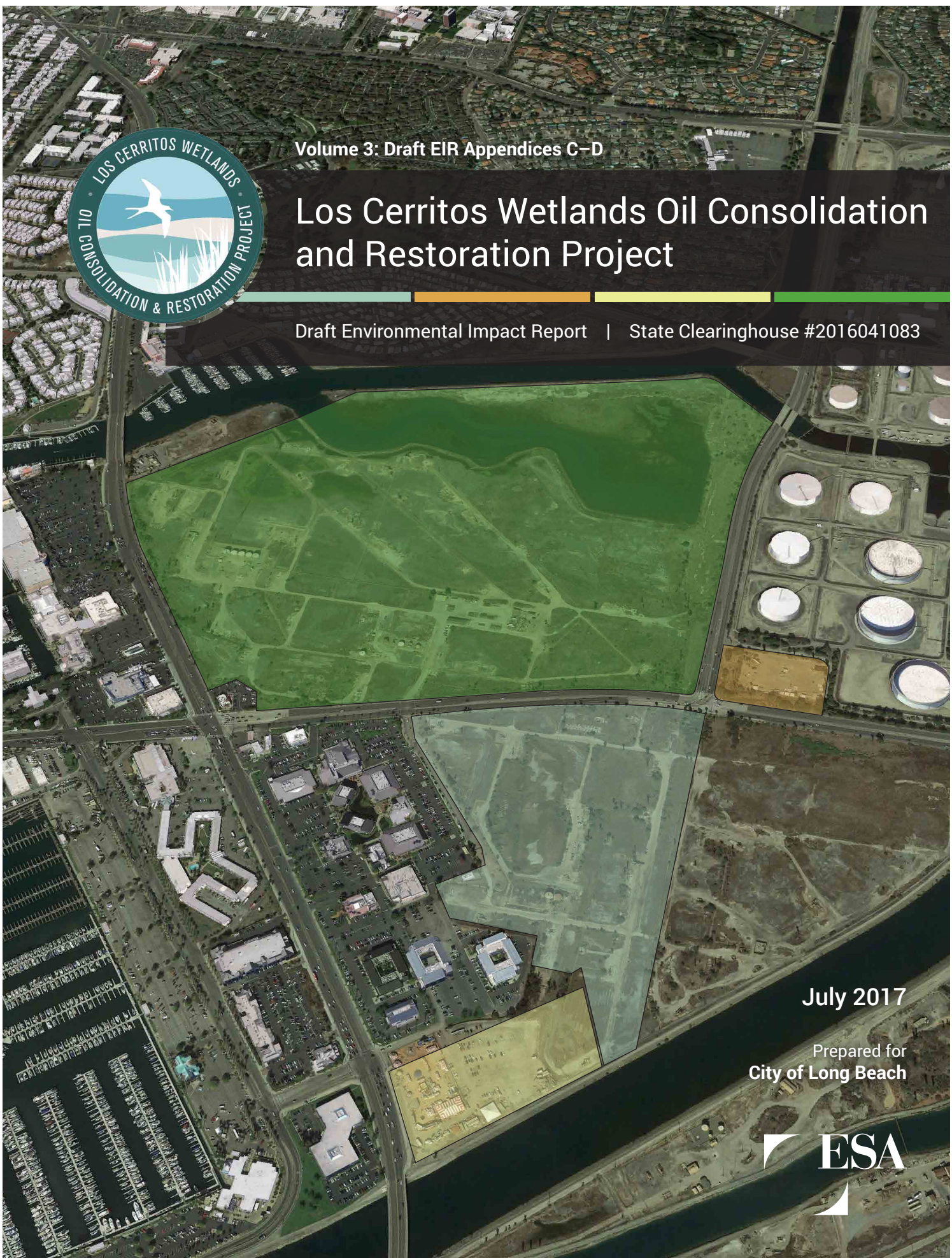




Volume 3: Draft EIR Appendices C-D

Los Cerritos Wetlands Oil Consolidation and Restoration Project

Draft Environmental Impact Report | State Clearinghouse #2016041083



July 2017

Prepared for
City of Long Beach



LOS CERRITOS WETLANDS OIL CONSOLIDATION AND RESTORATION PROJECT

Draft Environmental Impact Report
State Clearinghouse #2016041083

Volume 3: Draft EIR Appendices C–D

Prepared for
City of Long Beach

July 2017

Planning Bureau, Development Services Department
333 West Ocean Boulevard, 5th Floor
Long Beach, CA 90802

626 Wilshire Boulevard
Suite 1100
Los Angeles, CA 90017
213.599.4300
www.esassoc.com



Bend	Oakland	San Francisco
Camarillo	Orlando	Santa Monica
Delray Beach	Pasadena	Sarasota
Destin	Petaluma	Seattle
Irvine	Portland	Sunrise
Los Angeles	Sacramento	Tampa
Miami	San Diego	

150712.00

OUR COMMITMENT TO SUSTAINABILITY | ESA helps a variety of public and private sector clients plan and prepare for climate change and emerging regulations that limit GHG emissions. ESA is a registered assessor with the California Climate Action Registry, a Climate Leader, and founding reporter for the Climate Registry. ESA is also a corporate member of the U.S. Green Building Council and the Business Council on Climate Change (BC3). Internally, ESA has adopted a Sustainability Vision and Policy Statement and a plan to reduce waste and energy within our operations. This document was produced using recycled paper.

CONTENTS

Los Cerritos Wetlands Oil Consolidation and Restoration Project Draft EIR

VOLUME 3: DRAFT EIR APPENDICES C–D

Appendix C	Biological Resources
	<i>C1 Biological Technical Report and Jurisdictional Delineation</i>
	<i>C2 Restoration Plan</i>
	<i>C3 Environmentally Sensitive Habitat Areas Technical Memorandum</i>
Appendix D	Cultural Resources
	<i>D1 Historic Resources Assessment</i>
	<i>D2 Archaeological Resources Assessment</i>
	<i>D3 Paleontological Resources Assessment</i>

PUBLISHED UNDER SEPARATE COVER

VOLUME 1: DRAFT EIR

Executive Summary

Chapter 1	Introduction
Chapter 2	Project Description
Chapter 3	Environmental Setting, Impacts, and Mitigation Measures
	Introduction to the Environmental Analysis
3.1	Aesthetics
3.2	Air Quality
3.3	Biological Resources
3.4	Cultural Resources
3.5	Geology, Seismicity, and Soils
3.6	Greenhouse Gas Emissions
3.7	Hazards and Hazardous Materials
3.8	Hydrology and Water Quality
3.9	Land Use and Planning
3.10	Mineral Resources
3.11	Noise
3.12	Population and Employment
3.13	Public Services

- 3.14 Recreation
- 3.15 Transportation and Traffic
- 3.16 Tribal Cultural Resources
- 3.17 Utilities and Service Systems
- 3.18 Energy Consumption

- Chapter 4 Other CEQA Considerations**
- Chapter 5 Alternatives**
- Chapter 6 Report Preparers**
- Chapter 7 Abbreviations/Acronyms and Glossary**

VOLUME 2: DRAFT EIR APPENDICES A–B

- Appendix A Initial Study / Notice of Preparation**
 - A1 Notice of Preparation*
 - A2 Notice of Preparation Comment Letters*
 - A3 Initial Study*
- Appendix B Air Quality and Greenhouse Gas Emissions**
 - B1 Air Quality Assessment*
 - B2 Health Risk Assessment*
 - B3 Greenhouse Gas Assessment*
 - B4 Greenhouse Gas Mitigation White Paper*

VOLUME 4: DRAFT EIR APPENDICES E–F3

- Appendix E Geotechnical Reports**
 - E1 Geotechnical Study for the Pumpkin Patch Site*
 - E2 Geotechnical Study for the LCWA Site*
 - E3 Limited Alquist-Priolo Fault Zone Evaluation*
 - E4 Soil and Groundwater Assessment for the Pumpkin Patch Site*
 - E5 Oil Drilling and Production Overview White Paper*
 - E6 Induced Seismicity White Paper*
 - E7 Water Injection White Paper*
 - E8 Pipeline Design Assessment*
- Appendix F Environmental Site Assessments and Sampling Results**
 - F1 Phase I Environmental Site Assessment for the Synergy Oil Field Site*
 - F2 Phase I Environmental Site Assessment for the City Property Site*
 - F3 Phase I Environmental Site Assessment for the Pumpkin Patch Site*

VOLUME 5: DRAFT EIR APPENDICES F4–K

Appendix F	Environmental Site Assessments and Sampling Results [continued]
	<i>F4 Phase I Environmental Site Assessment for the LCWA Site</i>
	<i>F5 Sampling Description and Results and Mitigation Measures for the LCWA Site</i>
	<i>F6 Asbestos and Lead-Based Paint Sampling for the Bixby Structure</i>
	<i>F7 Proposed Sampling Locations for the City Property Site</i>
	<i>F8 Sampling Analytical Results for LCWA Site</i>
Appendix G	Hydrological Studies
	<i>G1 Preliminary Drainage Study</i>
	<i>G2 Low Impact Development Plan</i>
	<i>G3 Updated Sea Level Rise Impact Analyses</i>
	<i>G4 First Semiannual Groundwater Monitoring Report (October 2016 to April 2017)</i>
Appendix H	Noise Analyses Report
Appendix I	Traffic Memoranda
	<i>I1 Lyon Communities Traffic Analysis</i>
	<i>I2 Pumpkin Patch Construction Phase Traffic Generation</i>
	<i>I3 Pumpkin Patch Construction Trip Generation Summary</i>
	<i>I4 Pumpkin Patch Trash Removal/Export Trip Generation</i>
Appendix J	Energy Consumption Calculations

[THIS PAGE INTENTIONALLY LEFT BLANK]