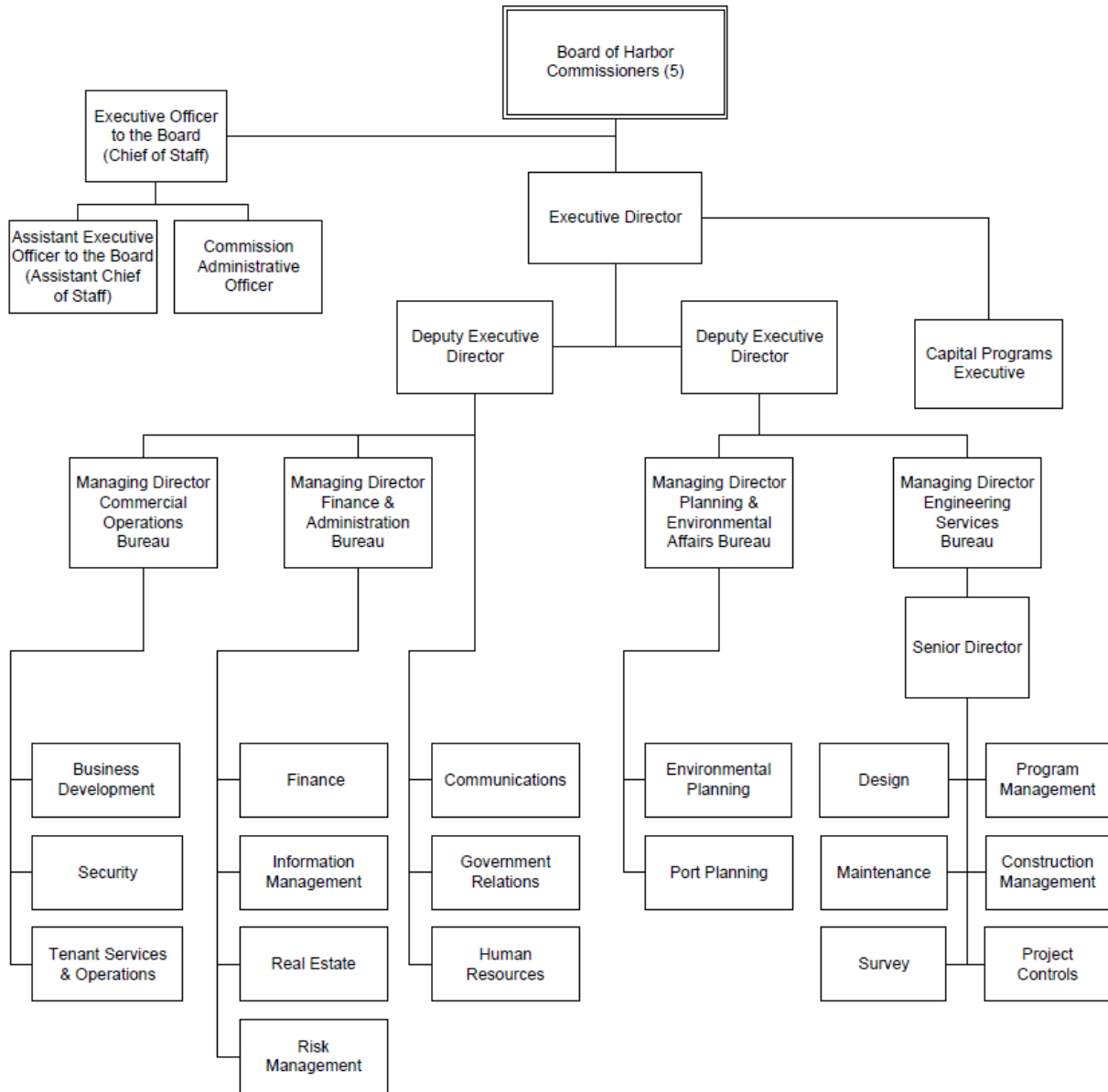


Harbor



Mission Statement

The Port of Long Beach is an international gateway for the reliable, efficient and sustainable movement of goods for the benefit of our local and global economies.

Financial Summary by Category

	Actual	Adopted*	Adjusted**	Adopted*
	FY 21	FY 22	FY 22	FY 23
Revenues:				
Property Taxes	-	-	-	-
Sales and Use Taxes	-	-	-	-
Other Taxes	-	-	-	-
Utility Users Tax	-	-	-	-
Franchise Fees	-	-	-	-
Licenses, Permits and Fees	36,315	-	-	-
Fines and Forfeitures	-	-	-	-
Use of Money & Property	49,077,816	36,654,772	36,654,772	71,048,000
Revenue from Other Agencies	30,055,967	68,447,000	68,447,000	57,414,000
Charges for Services	394,860,763	386,822,228	386,822,228	452,903,000
Other Revenues	1,186,755	12,336,000	12,336,000	1,336,000
Intrafund Services	79,437	-	4,743,952	-
Intrafund Transfers	(82,950,106)	-	-	-
Interfund Services	163,418	-	-	-
Interfund Transfers	-	-	-	-
Other Financing Sources	-	-	-	-
	-----	-----	-----	-----
Total Revenues	392,510,366	504,260,000	509,003,952	582,701,000
Expenditures:				
Salaries and Wages	54,999,820	61,729,063	61,729,063	67,296,563
Employee Benefits	29,936,660	35,168,349	35,168,349	38,859,558
Overtime	2,480,990	1,782,351	1,782,351	2,035,920
Materials, Supplies and Services	385,328,955	72,024,638	247,347,026	87,176,253
Interfund Support	34,561,185	37,298,356	37,430,405	38,289,316
Intrafund Support	-	-	-	-
Capital Purchases	3,680,302	315,605,711	140,119,565	306,672,567
Insurance Premiums and Losses	14,296	417,000	417,000	205,000
Other Non-Operational Expenditures	42,553,588	73,858,569	73,858,569	75,384,579
Operating Transfers	21,598,239	22,081,911	22,081,911	23,286,322
Intrafund Transfers Out	(82,950,106)	-	-	-
Purchase of Gas & Water	-	-	-	-
Depreciation and Non Cash Expenditures	-	-	-	-
	-----	-----	-----	-----
Total Expenditures	492,203,930	619,965,949	619,934,240	639,206,077
Budgeted FTEs	595.60	606.60	606.60	617.00

* Amounts exclude all-years carryover. See budget ordinance in back of this document.

**Adjusted Budget as of April 30, 2022.

Note: The City is currently maintaining two different financial systems and until a new budget development software is established, the financial information displayed in the future may have further adjustments.

Personnel Summary

	FY 21 Adopt FTE	FY 22 Adopt FTE	FY 23 Adopt FTE	FY 22 Adopted Budget	FY 23 Adopted Budget
Executive Director	1.00	1.00	1.00	365,505	408,525
Accountant I	1.00	1.00	1.00	72,034	73,857
Accountant II	1.00	1.00	1.00	81,677	83,744
Accountant III	1.00	-	-	-	-
Accounting Clerk II	1.00	1.00	1.00	53,498	54,851
Accounting Clerk III	1.00	1.00	1.00	57,547	59,003
Accounting Technician	3.00	3.00	3.00	190,482	195,302
Administrative Aide I	2.00	1.00	1.00	61,981	63,549
Administrative Aide II	10.00	9.00	9.00	576,348	601,352
Administrative Analyst I	10.00	11.00	5.00	899,856	430,611
Administrative Analyst II	9.00	7.00	14.00	646,133	1,246,201
Administrative Analyst III	15.00	16.00	20.00	1,595,781	1,995,988
Administrative Intern-NC/H43	8.50	7.50	-	384,608	-
Assistant Administrative Analyst I	1.00	1.00	1.00	68,522	57,504
Assistant Administrative Analyst II	13.00	12.00	9.00	892,994	693,294
Assistant Director of Business Development	1.00	1.00	1.00	167,291	170,340
Assistant Director of Communications	1.00	1.00	1.00	155,966	183,306
Assistant Director of Construction Management	1.00	1.00	1.00	171,036	193,426
Assistant Director of Engineering Design	1.00	1.00	1.00	172,310	193,030
Assistant Director of Environmental Planning	1.00	1.00	1.00	166,279	182,723
Assistant Director of Finance	1.00	1.00	1.00	167,091	187,182
Assistant Director of Human Resources	1.00	1.00	1.00	160,000	180,985
Assistant Director of Information Management	1.00	1.00	1.00	167,089	185,398
Assistant Director of Maintenance	-	-	1.00	-	175,785
Assistant Director of Program Management	1.00	1.00	1.00	167,681	182,513
Assistant Director of Real Estate	1.00	1.00	1.00	154,558	181,649
Assistant Director of Security - Homeland Security	1.00	1.00	1.00	166,230	187,991
Assistant Director of Security Support	1.00	1.00	1.00	166,232	187,997
Assistant Director of Tenant Services	-	-	1.00	-	186,195
Assistant Executive Officer to the Board	1.00	1.00	1.00	130,000	149,386
Assistant Marketing Manager I	-	1.00	-	55,541	-
Assistant Marketing Manager III	2.00	1.00	2.00	102,660	194,847
Assistant to the Executive Director	1.00	1.00	1.00	103,242	118,960
Building Maintenance Engineer	3.00	4.00	4.00	329,089	330,544
Building Services Supervisor	-	1.00	1.00	53,450	59,261
Business Development Analyst	2.00	2.00	2.00	188,228	216,854
Capital Programs Executive	1.00	1.00	1.00	308,069	313,027
Capital Projects Coordinator II	2.00	2.00	2.00	183,119	214,597
Capital Projects Coordinator III	3.00	3.00	3.00	338,918	359,272
Capital Projects Coordinator IV	5.00	5.00	5.00	700,265	717,918
Carpenter	1.00	1.00	1.00	59,435	59,430
Chief Construction Inspector	1.00	1.00	1.00	131,745	134,980

Personnel Summary

Classification	FY 21 Adopt FTE	FY 22 Adopt FTE	FY 23 Adopt FTE	FY 22 Adopted Budget	FY 23 Adopted Budget
Chief Information Officer	1.00	1.00	1.00	188,399	211,033
Chief Information Security Officer	1.00	1.00	1.00	172,317	194,839
Chief Surveyor	1.00	1.00	1.00	143,846	148,194
Chief Wharfinger	-	1.00	1.00	97,654	105,592
Civil Engineer	14.00	14.00	14.00	1,711,798	1,761,415
Civil Engineering Assistant	7.00	7.00	5.00	607,218	435,957
Civil Engineering Associate	13.00	13.00	15.00	1,364,593	1,593,795
Clerk Typist III	12.00	12.00	12.00	656,181	647,543
Clerk Typist IV	1.00	2.00	1.00	117,965	60,475
Commercial Diver II	6.00	6.00	6.00	616,663	615,561
Commission Administrative Officer	1.00	1.00	1.00	107,196	114,367
Communications Officer	5.00	5.00	7.00	558,796	856,900
Community Program Specialist III	-	1.00	-	90,625	-
Community Program Specialist IV	-	-	1.00	-	93,687
Construction Inspector I	1.00	1.00	1.00	90,519	77,239
Construction Inspector II	13.00	13.00	13.00	1,279,485	1,306,516
Construction Supervisor	1.00	1.00	1.00	84,016	85,645
Contract Compliance Analyst III	1.00	1.00	-	110,757	-
Contract Compliance Analyst IV	-	-	1.00	-	126,392
Deputy Chief Harbor Engineer II	9.00	9.00	10.00	1,451,683	1,623,411
Deputy Executive Director	2.00	2.00	2.00	553,505	620,116
Director of Business Development	1.00	1.00	1.00	180,143	199,880
Director of Communications	1.00	1.00	1.00	184,225	204,412
Director of Construction Management	1.00	1.00	1.00	183,213	207,200
Director of Engineering Design	1.00	1.00	1.00	181,809	205,611
Director of Environmental Planning	1.00	1.00	1.00	180,143	199,880
Director of Finance	1.00	1.00	1.00	187,973	212,580
Director of Government Relations	1.00	1.00	1.00	186,931	209,408
Director of Human Resources - Harbor	1.00	1.00	1.00	186,182	196,861
Director of Maintenance	1.00	1.00	1.00	179,797	201,397
Director of Master Planning	1.00	1.00	-	173,772	-
Director of Program Management	1.00	1.00	1.00	177,317	191,715
Director of Project Controls	1.00	1.00	1.00	175,756	198,762
Director of Real Estate	1.00	1.00	1.00	174,400	197,232
Director of Risk Management	1.00	1.00	1.00	173,772	196,486
Director of Security	1.00	1.00	1.00	186,410	210,815
Director of Survey	1.00	1.00	1.00	177,532	200,771
Director of Tenant Services & Operations	1.00	1.00	1.00	173,772	198,013
Director of Transportation Planning	1.00	1.00	1.00	173,772	198,671
Electrical Engineer	2.00	2.00	2.00	209,284	262,497
Electrical Supervisor	1.00	1.00	1.00	85,905	87,577
Electrician	4.00	4.00	4.00	300,813	305,325

Personnel Summary

Classification	FY 21 Adopt FTE	FY 22 Adopt FTE	FY 23 Adopt FTE	FY 22 Adopted Budget	FY 23 Adopted Budget
Environmental Remediation Specialist II	1.00	1.00	1.00	141,720	145,285
Environmental Specialist Associate	8.00	10.00	7.00	1,029,459	692,574
Environmental Specialist I	2.00	2.00	4.00	235,444	465,796
Environmental Specialist II	2.00	2.00	4.00	260,674	546,292
Equipment Mechanic I	3.00	3.00	3.00	199,534	190,457
Equipment Mechanic II	1.00	1.00	1.00	60,868	75,955
Equipment Operator III	4.00	4.00	4.00	263,844	269,010
Executive Officer to the Board	1.00	1.00	1.00	165,000	181,881
Executive Secretary - Harbor	4.00	4.00	4.00	340,023	383,640
Garage Service Attendant II	1.00	1.00	1.00	51,700	47,632
Garage Service Attendant I-NC	0.40	0.40	-	15,558	-
Garage Supervisor	1.00	1.00	1.00	105,068	107,123
Gardener II	2.00	4.00	6.00	187,508	282,989
General Maintenance Assistant	3.00	3.00	3.00	179,098	179,098
Geographic Information Systems Analyst II	3.00	3.00	3.00	288,142	280,931
Geographic Information Systems Analyst III	1.00	1.00	1.00	106,202	91,763
Geographic Information Systems Tech I	1.00	1.00	1.00	66,841	56,232
Geographic Information Systems Tech II	2.00	2.00	2.00	135,924	149,767
GIS Supervisor	1.00	1.00	1.00	99,282	114,386
Harbor Control Center Supervisor	1.00	1.00	1.00	102,660	105,258
Harbor Maintenance Mechanic I	4.00	4.00	3.00	251,900	194,723
Harbor Maintenance Mechanic II	3.00	3.00	4.00	213,409	285,024
Harbor Marine Engineer	1.00	1.00	1.00	141,720	143,846
Harbor Patrol Officer I	-	-	5.00	-	348,923
Harbor Patrol Officer II	-	-	48.00	-	3,272,828
Harbor Patrol Officer III	-	-	9.00	-	780,887
Intermodal Operations Coordinator	2.00	2.00	3.00	258,087	375,416
Intermodal Operations Manager	1.00	1.00	1.00	160,692	180,014
Maintenance Assistant I	8.00	8.00	8.00	344,922	343,479
Maintenance Assistant II	1.00	1.00	1.00	39,884	41,507
Maintenance Assistant III	6.00	4.00	4.00	211,106	217,207
Maintenance Assistant I-NC	1.50	1.50	-	56,872	-
Maintenance Planner I	1.00	1.00	1.00	79,826	81,448
Maintenance Planner II	3.00	3.00	3.00	258,076	268,038
Maintenance Supervisor	2.00	2.00	2.00	146,260	147,981
Manager of Accounting	1.00	1.00	1.00	146,677	164,297
Manager of Air Quality Practices	1.00	1.00	1.00	140,981	164,163
Manager of Business Applications	1.00	1.00	1.00	157,322	167,874
Manager of Business Development	1.00	1.00	1.00	130,000	149,061
Manager of Business Development-Export Cargo	1.00	1.00	1.00	138,530	156,663
Manager of Business Development-Import Cargo	1.00	1.00	1.00	138,530	146,880
Manager of Business Development-Strategic Support	1.00	1.00	1.00	138,526	156,659
Manager of CEQA/NEPA Projects	1.00	1.00	1.00	144,505	166,690

Personnel Summary

Classification	FY 21 Adopt FTE	FY 22 Adopt FTE	FY 23 Adopt FTE	FY 22 Adopted Budget	FY 23 Adopted Budget
Manager of Contract Compliance	1.00	1.00	1.00	146,202	162,222
Manager of Engineering Technology	1.00	1.00	1.00	157,114	177,682
Manager of Environmental Remediation	1.00	1.00	1.00	147,331	166,620
Manager of Facilities Maintenance	1.00	1.00	1.00	138,530	156,663
Manager of Financial Planning & Analysis	1.00	1.00	1.00	153,866	172,348
Manager of Grants Administration	2.00	1.00	1.00	136,875	151,873
Manager of Harbor Grants	-	1.00	1.00	149,336	162,542
Manager of Harbor Marine	1.00	1.00	1.00	150,279	169,953
Manager of Infrastructure Maintenance	1.00	1.00	1.00	135,759	149,185
Manager of Labor Compliance Administration	1.00	1.00	1.00	138,526	156,659
Manager of Maintenance Administration	1.00	1.00	1.00	131,805	146,248
Manager of Master Planning	1.00	1.00	2.00	146,450	298,758
Manager of Network Operations	1.00	1.00	1.00	156,646	168,858
Manager of Port Projects	-	2.00	2.00	295,000	300,000
Manager of Project Controls	1.00	1.00	1.00	157,542	178,166
Manager of Revenue	1.00	1.00	1.00	146,152	163,711
Manager of Safety/Business Continuity	1.00	1.00	1.00	147,126	156,998
Manager of Security Operations	3.00	2.00	2.00	284,960	317,657
Manager of Security Operations – Training	-	1.00	1.00	145,222	164,233
Manager of Sustainable Practices	1.00	1.00	1.00	147,120	166,378
Manager of Talent Relations and Engagement	-	-	1.00	-	145,000
Manager of Technical Security	1.00	1.00	1.00	159,779	180,697
Manager of Technology Strategy and Architecture	-	-	1.00	-	155,000
Manager of Tenant Services	1.00	1.00	1.00	138,891	157,075
Manager of Transportation Development	1.00	1.00	1.00	144,037	159,065
Manager of Utilities	1.00	1.00	1.00	140,981	159,438
Manager of Water Quality Practices	1.00	1.00	1.00	145,313	160,331
Managing Director	4.00	4.00	4.00	1,002,060	1,112,196
Marketing Manager	2.00	2.00	2.00	233,097	238,994
Mechanical Supervisor	1.00	1.00	1.00	97,089	98,985
Motor Sweeper Operator	1.00	1.00	1.00	65,945	65,945
Office Automation Analyst I	1.00	1.00	1.00	79,641	81,655
Office Automation Analyst II	3.00	3.00	3.00	257,873	264,397
Office Automation Analyst III	2.00	2.00	2.00	185,280	189,968
Office Systems Analyst II	8.00	9.00	9.00	1,114,466	1,131,044
Office Systems Analyst III	13.00	9.00	10.00	1,231,786	1,358,176
Office Systems Analyst IV	-	6.00	8.00	820,977	1,085,155
Painter II	1.00	1.00	1.00	67,654	67,654
Painter Supervisor	1.00	1.00	1.00	76,381	77,855
Park Maintenance Supervisor	1.00	1.00	1.00	79,832	81,429
Payroll Personnel Assistant III	2.00	2.00	2.00	120,846	123,903
Plumber	6.00	6.00	6.00	454,229	440,563
Plumber Supervisor	2.00	2.00	2.00	157,063	160,131

Personnel Summary

Classification	FY 21 Adopt FTE	FY 22 Adopt FTE	FY 23 Adopt FTE	FY 22 Adopted Budget	FY 23 Adopted Budget
Port Commercial Appraiser	1.00	1.00	1.00	128,067	132,309
Port Communications Specialist II	0.20	0.20	-	13,508	-
Port Communications Specialist III	2.00	3.00	4.00	236,729	322,468
Port Communications Specialist IV	5.00	5.00	5.00	445,142	495,799
Port Communications Specialist V	6.00	7.00	6.00	676,864	638,055
Port Financial Analyst II	2.00	2.00	1.00	223,914	113,559
Port Financial Analyst III	5.00	5.00	6.00	605,485	757,531
Port Leasing Sales Officer I	1.00	1.00	1.00	68,522	70,256
Port Leasing Sales Officer V	4.00	2.00	2.00	238,929	222,407
Port Planner I	1.00	1.00	-	100,039	-
Port Planner II	1.00	-	2.00	-	206,418
Port Planner III	-	1.00	1.00	116,438	108,211
Port Planner IV	3.00	3.00	-	355,403	-
Port Planner V	2.00	2.00	4.00	253,518	532,006
Port Records Center Supervisor	1.00	-	-	-	-
Port Risk Manager II	1.00	1.00	1.00	110,757	113,559
Port Security System Operator II	9.00	9.00	9.00	709,005	713,710
Port Security System Operator III	4.00	4.00	5.00	348,842	445,673
Principal Construction Inspector	4.00	4.00	4.00	448,896	440,883
Project Budget Analyst III	2.00	2.00	2.00	221,514	227,118
Project Scheduler I	1.00	1.00	1.00	113,246	116,094
Project Scheduler II	2.00	1.00	1.00	134,415	137,795
Safety Specialist	2.00	2.00	2.00	198,429	203,441
Safety Specialist II	-	-	1.00	-	94,984
Secretary	7.00	7.00	6.00	406,510	359,095
Senior Accountant	1.00	2.00	2.00	193,197	192,422
Senior Civil Engineer	20.00	20.00	20.00	2,868,004	2,874,720
Senior Director of Engineering Program Delivery	1.00	1.00	1.00	201,697	230,253
Senior Electrical Engineer	1.00	1.00	1.00	141,720	145,285
Senior Electrical Inspector	1.00	1.00	1.00	91,846	98,849
Senior Engineering Tech I	2.00	2.00	2.00	194,749	199,647
Senior Engineering Tech II	1.00	1.00	1.00	102,466	105,043
Senior Equipment Operator	3.00	3.00	3.00	192,160	195,024
Senior Estimator	-	-	1.00	-	131,560
Senior Port Leasing Officer	1.00	4.00	4.00	495,206	529,234
Senior Program Manager	5.00	5.00	5.00	727,330	804,172
Senior Scheduler	3.00	4.00	4.00	566,882	581,139
Senior Secretary	13.00	12.00	13.00	742,534	802,940
Senior Structural Engineer	1.00	1.00	1.00	121,507	152,342
Senior Survey Technician	5.00	5.00	6.00	458,190	541,118
Senior Surveyor	4.00	4.00	3.00	441,061	355,162
Senior Traffic Engineer	1.00	1.00	1.00	143,138	146,738
Special Projects Officer	-	-	1.00	-	127,334

Personnel Summary

Classification	FY 21 Adopt FTE	FY 22 Adopt FTE	FY 23 Adopt FTE	FY 22 Adopted Budget	FY 23 Adopted Budget
Special Services Officer II	5.00	5.00	-	334,165	-
Special Services Officer III	51.00	50.00	-	3,262,458	-
Special Services Officer IV	8.00	9.00	-	747,295	-
Stock & Receiving Clerk	1.00	1.00	2.00	40,406	95,872
Storekeeper I	1.00	1.00	1.00	54,834	56,221
Structural Engineer	-	-	1.00	-	112,592
Supervisor of Commercial Diving	1.00	1.00	1.00	120,832	128,057
Supervisor-Stores/Property	1.00	1.00	1.00	65,722	70,816
Survey Technician	5.00	6.00	6.00	438,403	455,084
Surveyor	5.00	5.00	5.00	521,938	532,749
Tenant Services Representative II	5.00	5.00	6.00	354,954	435,867
Traffic Engineering Associate II	1.00	1.00	1.00	107,290	109,989
Traffic Painter I	-	1.00	1.00	48,839	48,835
Subtotal Salaries	595.60	606.60	617.00	61,699,063	67,266,563
Overtime	-	-	-	1,782,351	2,035,920
Fringe Benefits*	-	-	-	33,795,384	37,172,624
Administrative Overhead	-	-	-	1,402,965	1,716,933
Attrition/Salary Savings	-	-	-	-	-
Expenditure Transfer	-	-	-	-	-
Total	595.60	606.60	617.00	98,679,763	108,192,040

Key Contacts

Mario Cordero, Executive Director

Rick Cameron, Deputy Executive Director, Planning & Development

Noel Hacegaba, Deputy Executive Director, Administration & Operations

Sam Joumblat, Managing Director, Finance & Administration Bureau

Sean Gamette, Managing Director, Engineering Services Bureau

Heather Tomley, Managing Director, Planning and Environmental Affairs Bureau

Samantha Galltin, Managing Director, Commercial Operations Bureau

Duane Kenagy, Capital Programs Executive

Wei Chi, Director of Finance

415 W. Ocean Blvd.
Long Beach, CA 90802
Phone: (562) 283-7550
www.polb.com

