

Airport Advisory Commission

Katie Larson
Chair

Kenneth Brown

Wayne Chaney Sr.

Mireya LaFarga

Geetanjali Reuben

Dede Rossi



long beach
airport



Airport Management

Cynthia Guidry
Director

Juan López-Rios
Deputy Airport Director

Ken Mason
Executive Assistant

Claudia Lewis
Manager of Administration &
Finance

Ron Reeves
Airport Operations & Facilities
Manager

Stephan Lum
Engineering Officer

Dale Worsham
Development Services Officer

Terry Ward
Operations Liaison Officer

Scott Garrett
Facilities Management Officer

Mony Chhey
Financial Services Officer

Scott Korobkin
Superintendent of Safety & Security

Kate Kuykendall
Public Affairs Officer

Ryan McMullan
Noise & Environmental Affairs Officer



Long Beach Airport Monthly Noise Report April 2023

COMMERCIAL AIRCRAFT LATE NIGHT ACTIVITY
LGB Current Month & Calendar Year-To-Date Statistics (10 PM- 7AM)
April 2023

April				Calendar Year-To-Date		
10PM - 11PM Activity	2023	2022	Change	2023	2022	Change
Air Carrier & Commuter Operations	2,632	2,638	-0.2%	10,744	10,518	2.1%
American/Mesa/SkyWest/Envoy	0	0		1	0	100.0%
Delta/SkyWest Airlines	1	1	0.0%	14	8	75.0%
Hawaiian Airlines	0	0		2	1	100.0%
Southwest Airlines	3	6	-50.0%	14	12	16.7%
UPS	0	0		0	1	-100.0%
Subtotal 10PM-11PM	4	7	-42.9%	31	22	40.9%
11PM- 7AM Activity	2023	2022	Change	2023	2022	Change
American/Mesa/SkyWest/Envoy	0	0		0	0	
Delta/SkyWest Airlines	1	0	100.0%	1	0	100.0%
Hawaiian Airlines	1	0	100.0%	1	2	-50.0%
Southwest Airlines	0	0		0	1	-100.0%
UPS	0	0		1	0	100.0%
Subtotal 11PM-7AM	2	0	200.0%	3	3	0.0%
TOTAL	6	7	-14.3%	34	25	36.0%

Notes:

0.2% (6 of 2,632) of total commercial operations occurred between 10pm - 7am.

0.2 flights - Nightly average for all late night (10:00 PM—7:00 AM) commercial flights, includes unanticipated delays.

0.0 7flights - Nightly average for commercial flights after 11 PM.

AIRPORT NOISE VIOLATIONS						
LGB Current Month & Calendar Year-To-Date Statistics						
April 2023						
April				Calendar Year-To-Date		
Air Carrier Noise Violations	2023	2022	Change	2023	2022	Change
American/Mesa/SkyWest/Envoy	0	0		0	0	
Delta/SkyWest Airlines	1	0	100.0%	1	0	100.0%
Hawaiian Airlines	0	0		0	1	-100.0%
Southwest Airlines	0	0		0	0	
UPS	0	0		1	0	100.0%
Subtotal	1	0	100.0%	2	1	100.0%
Commuter Noise Violations	2023	2022	Change	2023	2022	Change
American/Mesa/SkyWest/Envoy	0	0		0	0	
Delta/SkyWest Airlines	0	0		0	0	
Subtotal	0	0		0	0	
Non-Commercial Noise Violations	2023	2022	Change	2023	2022	Change
All GA, Charter & Other	5	9	-44.4%	38	25	52.0%
TOTAL	6	9	-33.3%	40	26	53.8%
Monetary Fines	2023	2022		2023	2022	
Airport Surcharges	\$300	\$300		\$700	\$400	
Consent Decree	\$0	\$0		\$0	\$0	
TOTAL	\$300	\$300		\$700	\$400	

AIRPORT OPERATIONS						
LGB Current Month & Calendar Year-To-Date Statistics						
April 2023						
April				Calendar Year-To-Date		
Airport Operations (FAA)	2023	2022	Change	2023	2022	Change
Air Carrier + Commuter Carriers	2,632	2,638	-0.2%	10,744	10,518	2.1%
Air Taxi + General Aviation	24,586	26,608	-7.6%	98,361	107,684	-8.7%
Military Operations	97	98	-1.0%	337	426	-20.9%
Total Aircraft Operations	27,315	29,344	-6.9%	109,442	118,628	-7.7%

Notes:

0.02% (6 of 27,218) of the Airport's total aircraft operations (Commercial & GA) resulted in an aircraft noise violation.

0.04% (1 of 2,632) of the Airport's Commercial operations (Commercial & Commuter) resulted in an aircraft noise violation.

AIRCRAFT NOISE VIOLATORS

April 2023

OWNERNAME	DATE	TIME	A/D	RWY	FLIGHT #	A/C TYPE	ORIG/DEST	SEL	LIMIT	STATUS
Ignite Enterprises LLC	4/1/2023	6:47:19	D	30		H25B		93.6	90.0	VIO
MF Aviation LLC	4/1/2023	23:05:17	A	30		CL60		87.3	79.0	VIO
Airrush Inc	4/1/2023	23:36:26	A	30		CL60		89.3	79.0	VIO
Private	4/2/2023	5:16:19	D	26R		SR20		N/A	N/A	VIO
Delta Air Lines / SkyWest Airlines	4/4/2023	23:07:01	A	26R	SKW3895	E75L	SLC	N/A	N/A	VIO
Aegle Aviation	4/8/2023	1:40:11	D	30		GLEX		85.4	79.0	VIO

DEFINITIONS:

A/C Type — Aircraft Type

A/D — Arrival/Departure

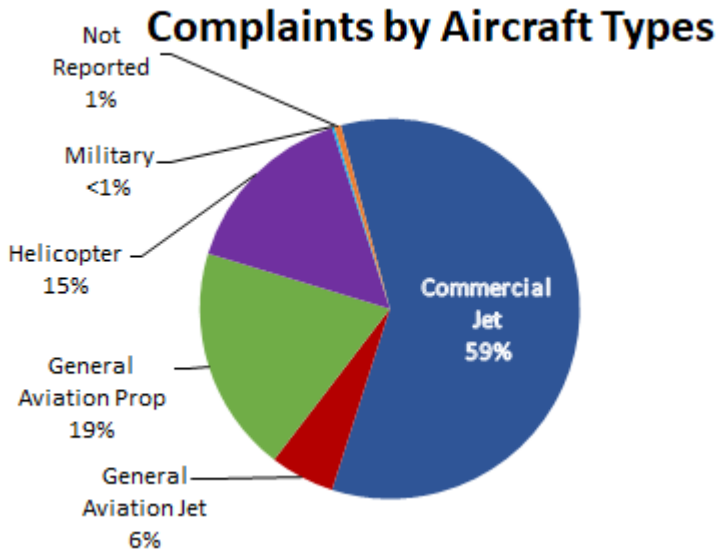
RWY — Runway

SEL — SENEL — Single Event Noise Exposure Level (dBA)

VIO — Violation

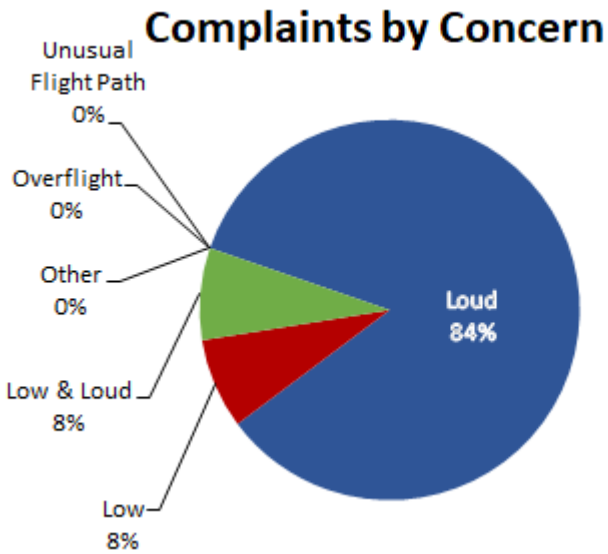
LGB AIRCRAFT NOISE COMPLAINTS

April 2023

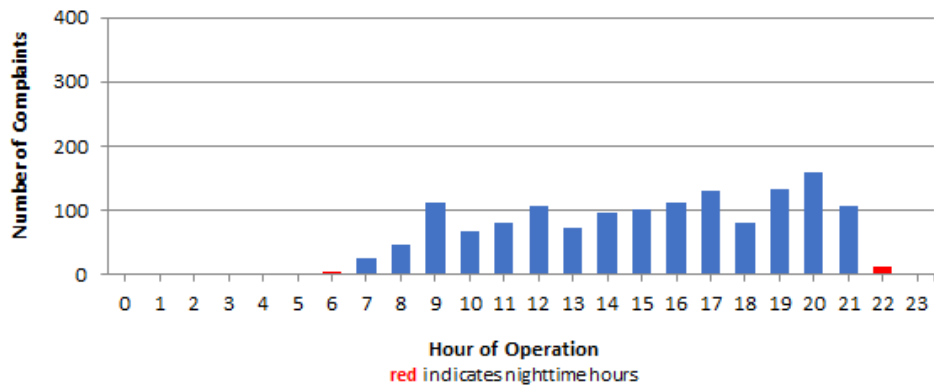


Complaints by Zip Code

Zip Code	Complaints	Units
90242	59	1
90254	12	1
90278	38	1
90713	1	1
90720	3	3
90740	2	2
90806	1	1
90807	138	41
90808	71	46
90810	1	1
90815	3	1
91364	1	1
92626	417	1
92627	1	1
92647	638	2
92648	42	6
92649	12	1
92651	7	1
92676	1	1
92677	3	1
Not Reported	6	5
Grand Total	1,457	119



Complaints by Time of Operation





long beach airport



Long Beach Airport

4100 E. Donald Douglas Drive, Long Beach, CA 90808

www.lgb.org • lgbapt@longbeach.gov

Administration • (562) 570-2619