

Airport Advisory Commission

Katie Larson
Chair

Robert L. Allarte
Vice Chair

Kenneth Brown

Wayne Chaney Sr.

Mireya LaFarga

Miles Nevin

Geetanjali Reuben

Dede Rossi

Airport Management

Cynthia Guidry
Director

Juan López-Ríos
Deputy Airport Director

Ken Mason
Executive Assistant

Claudia Lewis
Manager of Administration
& Finance

Ron Reeves
Airport Operations & Facilities
Manager

Stephan Lum
Engineering Officer

Dale Worsham
Development Services Officer

Karl Zittel
Airside Operations Officer

Matthew Brookes
Airport Properties Officer

Scott Garrett
Facilities Management Officer

Mony Chhey
Financial Services Officer

Scott Korobkin
Superintendent of Safety and
Security

Kate Kuykendall
Public Affairs Officer

Ryan McMullan
Noise & Environmental Affairs
Officer



long beach
airport



Long Beach Airport Monthly Noise Report December 2022

COMMERCIAL AIRCRAFT LATE NIGHT ACTIVITY
LGB Current Month & Calendar Year-To-Date Statistics (10 PM- 7AM)
December 2022

December				Calendar Year-To-Date		
10PM - 11PM Activity	2022	2021	Change	2022	2021	Change
Air Carrier & Commuter Operations	2,506	2,803	-10.6%	31,801	25,194	-26.2%
American/Mesa/SkyWest/Envoy	0	0		0	2	-100.0%
Delta/SkyWest Airlines	3	7	-57.1%	30	20	50.0%
Hawaiian Airlines	2	1	100.0%	5	4	25.0%
Southwest Airlines	5	3	66.7%	45	37	21.6%
UPS	0	0		1	1	0.0%
Subtotal 10PM-11PM	10	11	-9.1%	81	64	26.6%
11PM- 7AM Activity	2022	2021	Change	2022	2021	Change
American/Mesa/SkyWest/Envoy	0	0		0	3	-100.0%
Delta/SkyWest Airlines	1	2	-50.0%	3	4	-25.0%
Hawaiian Airlines	1	0	100.0%	5	0	100.0%
Southwest Airlines	0	0		3	2	50.0%
UPS	0	0		0	1	-100.0%
Subtotal 11PM-7AM	2	2	0.0%	11	10	10.0%
TOTAL	12	13	-7.7%	92	74	24.3%

Notes:

0.5% (12 of 2,506) of total commercial operations occurred between 10pm - 7am.

0.4 flights - Nightly average for all late night (10:00 PM—7:00 AM) commercial flights, includes unanticipated delays.

0.1 flights - Nightly average for commercial flights after 11 PM.

AIRPORT NOISE VIOLATIONS						
LGB Current Month & Calendar Year-To-Date Statistics						
December 2022						
December				Calendar Year-To-Date		
Air Carrier Noise Violations	2022	2021	Change	2022	2021	Change
American/Mesa/SkyWest/Envoy	0	0		0	0	
Delta/SkyWest Airlines	1	2	-50.0%	3	4	-25.0%
Hawaiian Airlines	2	0	100.0%	5	0	100.0%
Southwest Airlines	0	0		0	1	-100.0%
UPS	0	0		0	1	-100.0%
Subtotal	3	2	50.0%	8	6	33.3%
Commuter Noise Violations	2022	2021	Change	2022	2021	Change
American/Mesa/SkyWest/Envoy	0	0		0	0	
Delta/SkyWest Airlines	0	0		0	0	
Subtotal	0	0		0	0	
Non-Commercial Noise Violations	2022	2021	Change	2022	2021	Change
All GA, Charter & Other	8	16	-50.0%	71	149	-52.3%
TOTAL	11	18	-38.9%	79	155	-49.0%
Monetary Fines				2022	2021	
Airport Surcharges	\$1,000	\$1,300		\$2,600	\$6,100	
Consent Decree	\$0	\$0		\$0	\$0	
TOTAL	\$1,000	\$1,300		\$2,600	\$6,100	

AIRPORT OPERATIONS						
LGB Current Month & Calendar Year-To-Date Statistics						
December 2022						
December				Calendar Year-To-Date		
Airport Operations (FAA)	2022	2021	Change	2022	2021	Change
Air Carrier + Commuter Carriers	2,506	2,803	-10.6%	31,801	25,194	26.2%
Air Taxi + General Aviation	19,013	23,429	-18.8%	296,928	323,572	-8.2%
Military Operations	60	57	5.3%	1,046	1,256	-16.7%
Total Aircraft Operations	21,579	26,289	-17.9%	329,775	350,022	-5.8%

Notes:

0.05 % (11 of 21,519) of the Airport's total aircraft operations (Commercial & GA) resulted in an aircraft noise violation.

0.1% (3 of 2,506) of the Airport's Commercial operations (Commercial & Commuter) resulted in an aircraft noise violation.

AIRCRAFT NOISE VIOLATORS

December 2022

OWNERNAME	DATE	TIME	A/D	RWY	FLIGHT #	A/C TYPE	ORIG/DEST	SEL	LIMIT	STATUS
Caiman Capital LLC	12/2/2022	10:53:35	D	08L		SR22		91.1	88.0	VIO
Jet Edge International	12/13/2022	16:55:45	D	26R		GLF4		94.3	92.0	VIO
Kaiser Air, Inc.	12/17/2022	23:51:58	D	30		B735		91.6	79.0	VIO
Private	12/18/2022	12:50:24	D	26R		M7		94.1	92.0	VIO
Hawaiian Airlines	12/20/2022	0:20:10	A	30	HAL70	A21N	HNL	93.6	90.0	VIO
Hawaiian Airlines	12/21/2022	22:26:35	A	30	HAL72	A21N	OGG	93.3	90.0	VIO
Delta Air Lines / SkyWest Airlines	12/23/2022	23:32:41	A	30	SKW3892	E75L	SLC	92.1	90.0	VIO
Eagle Aviation LLC	12/24/2022	0:38:50	A	30		C525		86.4	79.0	VIO
Swiss Aviation Enterprises Inc.	12/27/2022	23:00:21	A	30		H25A		94.4	90.0	VIO
Raj Consulting LLC C/O Raj Manufacturing	12/28/2022	0:10:10	A	30		C68A		85.5	79.0	VIO
SJS Holdings LLC	12/30/2022	0:17:55	A	30		P210		84.2	79.0	VIO

DEFINITIONS:

A/C Type — Aircraft Type

RWY — Runway

A — Arrival

SEL—SENEL—Single Event Noise Exposure Level (dBA)

D — Departure

VIO—Violation

AIR CARRIER NOISE BUDGET PERFORMANCE

January 2022 - December 2022

RMT #	NOISE BUDGET	ACTUAL	PERCENT BUDGET USED
9	70.7	39.2	55.4%
10	84.6	59.9	70.8%

Source: Long Beach Airport Staff Calculations

DEFINITIONS:

RMT — Remote Monitoring Terminal

TOTAL NOISE BUDGET PERFORMANCE

January 2022 - December 2022

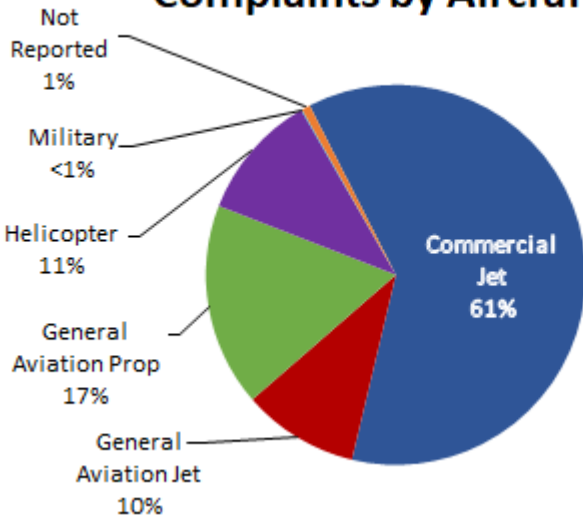
RMT #	NOISE BUDGET	ACTUAL	PERCENT BUDGET USED
9	102.7	47.4	46.1%
10	120.9	72.5	60.0%

Source: Long Beach Airport Staff Calculations

LGB AIRCRAFT NOISE COMPLAINTS

December 2022

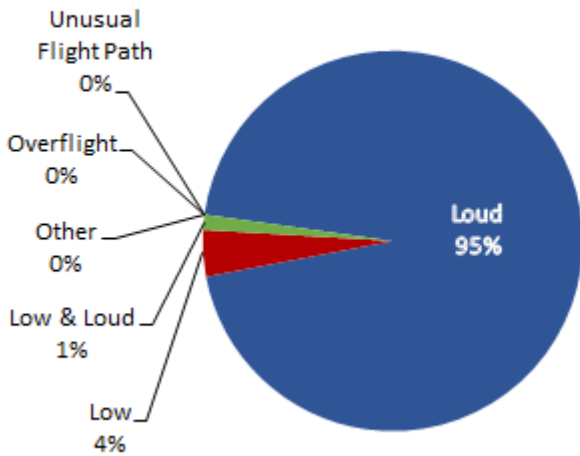
Complaints by Aircraft Types



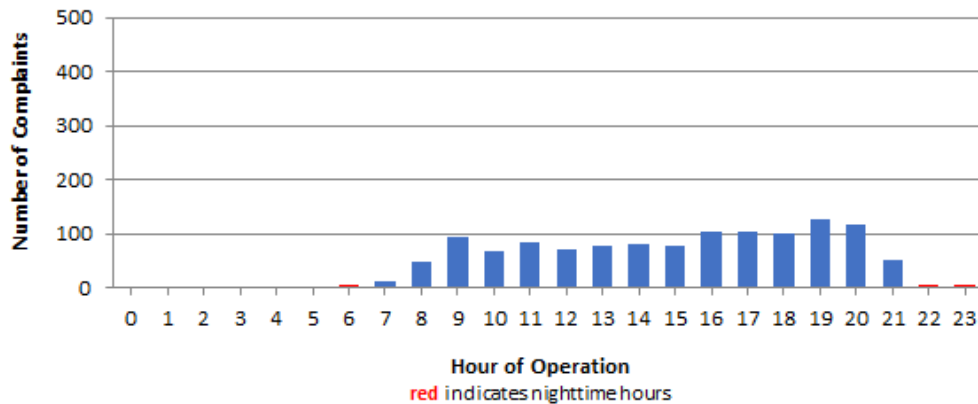
Complaints by Zip Code

Zip Code	Complaints	Units
90242	31	1
90254	2	1
90278	10	1
90731	1	1
90755	4	1
90805	2	1
90806	3	1
90807	33	12
90808	11	2
90815	1	1
91364	1	1
92626	342	2
92627	1	1
92647	746	2
92648	23	3
92649	19	3
92651	1	1
92656	1	1
92660	1	1
92661	1	1
92676	1	1
92677	4	1
Not Reported	4	1
Grand Total	1,243	41

Complaints by Concern



Complaints by Time of Operation





long beach airport



Long Beach Airport

4100 E. Donald Douglas Drive, Long Beach, CA 90808

www.lgb.org • lgbapt@longbeach.gov

Administration • (562) 570-2619