

Airport Advisory Commission

Geetanjali Reuben
Chair

Katie Larson
Vice Chair

Phyllis Arias

Kenneth Brown

Wayne Chaney Sr.

Mark Christoffels

Mireya LaFarga

Dede Rossi

Randy Zarn

Airport Management

Cynthia Guidry
Director

Juan López-Rios
Deputy Airport Director

Ken Mason
Executive Assistant

Claudia Lewis
Manager of Administration &
Finance

Ron Reeves
Airport Operations & Facilities
Manager

Stephan Lum
Engineering Officer

Dale Worsham
Development Services Officer

Terry Ward
Operations Liaison Officer

Scott Garrett
Facilities Management Officer

Mony Chhey
Financial Services Officer

Scott Korobkin
Superintendent of Safety & Security

Kate Kuykendall
Public Affairs Officer

Melissa DeAmicis
Administrative Officer

Ryan McMullan
Noise & Environmental Affairs Officer



long beach
airport



Long Beach Airport Monthly Noise Report June 2023

COMMERCIAL AIRCRAFT LATE NIGHT ACTIVITY
LGB Current Month & Calendar Year-To-Date Statistics (10 PM- 7AM)
June 2023

June				Calendar Year-To-Date		
10PM - 11PM Activity	2023	2022	Change	2023	2022	Change
Air Carrier & Commuter Operations	2,711	2,640	2.7%	16,190	15,861	2.1%
American/Mesa/SkyWest/Envoy	0	0		1	0	100.0%
Delta/SkyWest Airlines	0	7	-100.0%	17	16	6.3%
Hawaiian Airlines	0	0		2	1	100.0%
Southwest Airlines	3	2	50.0%	23	17	35.3%
UPS	0	0		0	1	-100.0%
Subtotal 10PM-11PM	3	9	-66.7%	43	35	22.9%
11PM- 7AM Activity	2023	2022	Change	2023	2022	Change
American/Mesa/SkyWest/Envoy	0	0		0	0	
Delta/SkyWest Airlines	0	0		1	0	100.0%
Hawaiian Airlines	0	0		7	2	250.0%
Southwest Airlines	1	1	0.0%	2	2	0.0%
UPS	0	0		1	0	100.0%
Subtotal 11PM-7AM	1	1	0.0%	11	4	175.0%
TOTAL	4	10	-60.0%	54	39	38.5%

Notes:

0.1% (4 of 2,711) of total commercial operations occurred between 10pm - 7am.

0.1 flights - Nightly average for all late night (10:00 PM—7:00 AM) commercial flights, includes unanticipated delays.

0.03 flights - Nightly average for commercial flights after 11 PM.

AIRPORT NOISE VIOLATIONS						
LGB Current Month & Calendar Year-To-Date Statistics						
June 2023						
June				Calendar Year-To-Date		
Air Carrier Noise Violations	2023	2022	Change	2023	2022	Change
American/Mesa/SkyWest/Envoy	0	0		0	0	
Delta/SkyWest Airlines	0	0		1	0	100.0%
Hawaiian Airlines	0	0		5	1	400.0%
Southwest Airlines	0	0		0	0	
UPS	0	0		1	0	100.0%
Subtotal	0	0		7	1	600.0%
Commuter Noise Violations	2023	2022	Change	2023	2022	Change
American/Mesa/SkyWest/Envoy	0	0		0	0	
Delta/SkyWest Airlines	0	0		0	0	
Subtotal	0	0		0	0	
Non-Commercial Noise Violations	2023	2022	Change	2023	2022	Change
All GA, Charter & Other	9	10	-10.0%	57	42	35.7%
TOTAL	9	10	-10.0%	64	43	48.8%
Monetary Fines				2023	2022	
Airport Surcharges	\$0	\$0		\$2,500	\$400	
Consent Decree	\$0	\$0		\$0	\$0	
TOTAL	\$0	\$0		\$2,500	\$400	

AIRPORT OPERATIONS						
LGB Current Month & Calendar Year-To-Date Statistics						
June 2023						
June				Calendar Year-To-Date		
Airport Operations (FAA)	2023	2022	Change	2023	2022	Change
Air Carrier + Commuter Carriers	2,711	2,640	2.7%	16,190	15,861	2.1%
Air Taxi + General Aviation	33,680	24,467	37.7%	156,537	154,732	1.2%
Military Operations	78	85	-8.2%	495	592	-16.4%
Total Aircraft Operations	36,469	27,192	34.1%	173,222	171,185	1.2%

Notes:

0.01% (9 of 36,391) of the Airport's total aircraft operations (Commercial & GA) resulted in an aircraft noise violation.
0.0% (0 of 2,711) of the Airport's Commercial operations (Commercial & Commuter) resulted in an aircraft noise violation.

AIRCRAFT NOISE VIOLATORS

June 2023

OWNERNAME	DATE	TIME	A/D	RWY	FLIGHT #	A/C TYPE	ORIG/DEST	SEL	LIMIT	STATUS
Lynn Simpkins DBA	6/1/2023	13:39:30	D	26R		C182	6	96.3	92.0	VIO
Private	6/10/2023	23:10:20	A	30		PA44	10	83.3	79.0	VIO
LJ60-036 LLC	6/10/2023	23:26:47	D	30		LJ60	9	82.2	79.0	VIO
PS&B LLC	6/11/2023	11:47:08	A	26R		B350	1	91.4	88.0	VIO
Xin Han Aviation LLC	6/16/2023	16:55:38	D	26R		PA34	6	96.1	92.0	VIO
SN 0048 LLC	6/16/2023	23:14:44	A	30		C206	10	83.0	79.0	VIO
Private	6/16/2023	23:25:37	A	30		BE35	10	82.7	79.0	VIO
Chandelle Investment Corp	6/24/2023	23:04:43	A	30		C68A	10	85.0	79.0	VIO
9K Air LLC	6/27/2023	19:25:03	M	30		C172	N/A	N/A	N/A	VIO

DEFINITIONS:

A/C Type — Aircraft Type

A/D — Arrival/Departure

M—Missed Approach

RWY — Runway

SEL — SENEL — Single Event Noise Exposure Level (dBA)

VIO — Violation

AIR CARRIER NOISE BUDGET PERFORMANCE

July 2022 - June 2023

RMT #	NOISE BUDGET	ACTUAL	PERCENT BUDGET USED
9	70.7	37.7	53.3%
10	84.6	62.5	73.9%

Source: Long Beach Airport Staff Calculations

DEFINITIONS:

RMT — Remote Monitoring Terminal

TOTAL NOISE BUDGET PERFORMANCE

July 2022 - June 2023

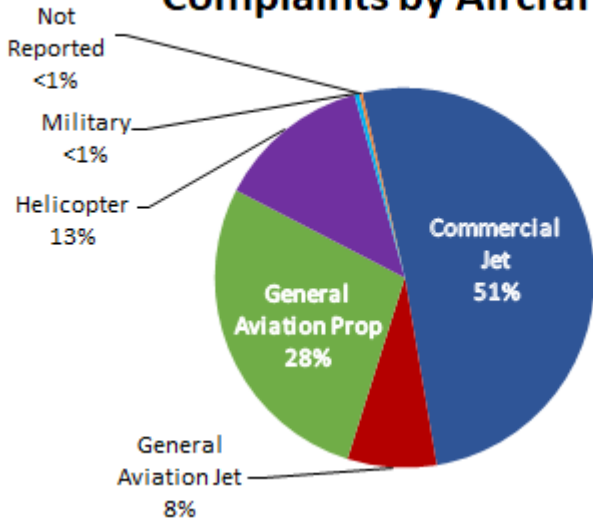
RMT #	NOISE BUDGET	ACTUAL	PERCENT BUDGET USED
9	102.7	44.9	43.7%
10	120.9	73.9	61.1%

Source: Long Beach Airport Staff Calculations

LGB AIRCRAFT NOISE COMPLAINTS

June 2023

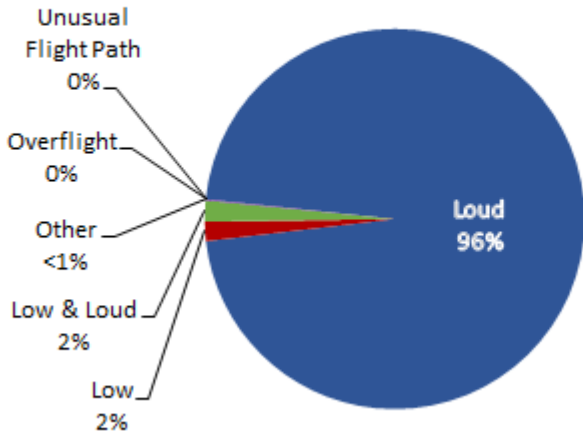
Complaints by Aircraft Types



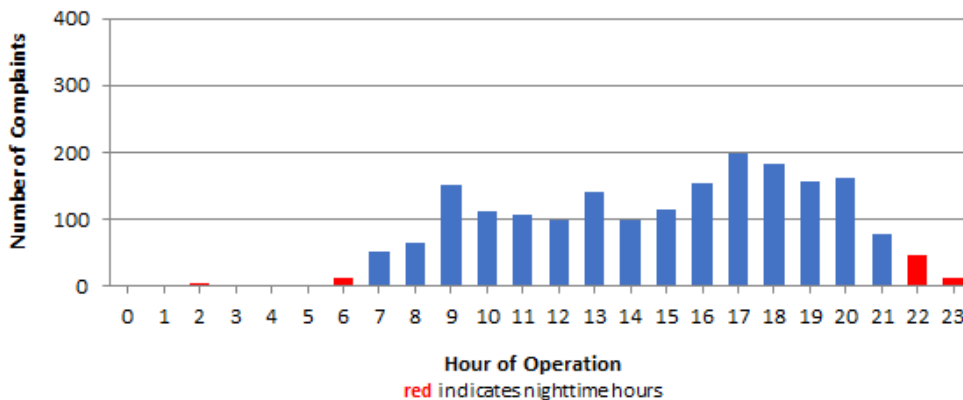
Complaints by Zip Code

Zip Code	Complaints	Units
90242	81	1
90254	11	1
90278	52	1
90712	3	2
90713	2	2
90740	6	3
90746	30	1
90807	186	33
90808	76	4
90815	1	1
91364	1	1
92626	270	1
92627	2	1
92646	1	1
92647	1067	3
92648	116	7
92649	32	2
92651	6	1
92660	2	2
92661	1	1
92677	1	1
Not Reported	7	5
Grand Total	1,954	75

Complaints by Concern



Complaints by Time of Operation





long beach airport



Long Beach Airport

4100 E. Donald Douglas Drive, Long Beach, CA 90808

www.lgb.org • lgbapt@longbeach.gov

Administration • (562) 570-2619