

Airport Advisory Commission

Katie Larson
Chair

Robert L. Allarte
Vice Chair

Christine Bos

Kenneth Brown

Wayne Chaney Sr.

Mireya LaFarga

Miles Nevin

Geetanjali Reuben

Dede Rossi

Airport Management

Cynthia Guidry
Director

Juan López-Rios
Deputy Airport Director

Ken Mason
Executive Assistant

Claudia Lewis
Manager of Administration
& Finance

Ron Reeves
Airport Operations & Facilities
Manager

Stephan Lum
Acting Engineering Officer

Dale Worsham
Development Services Officer

Karl Zittel
Airside Operations Officer

Matthew Brookes
Airport Properties Officer

Scott Garrett
Facilities Management Officer

Mony Chhey
Financial Services Officer

Scott Korobkin
Superintendent of Safety and
Security

Kate Kuykendall
Public Affairs Officer

Ryan McMullan
Noise & Environmental Affairs
Officer



long beach
airport



Long Beach Airport Monthly Noise Report July 2022

COMMERCIAL AIRCRAFT LATE NIGHT ACTIVITY
LGB Current Month & Calendar Year-To-Date Statistics (10 PM- 7AM)
July 2022

July				Calendar Year-To-Date		
10PM - 11PM Activity	2022	2021	Change	2022	2021	Change
Air Carrier & Commuter Operations	2,692	2,174	23.8%	18,553	12,941	43.4%
American/Mesa/SkyWest/Envoy	0	1	-100.0%	0	2	-100.0%
Delta/SkyWest Airlines	4	4	0.0%	20	9	122.2%
Hawaiian Airlines	1	1	0.0%	2	2	0.0%
Southwest Airlines	4	10	-60.0%	21	21	0.0%
UPS	0	0		1	1	0.0%
Subtotal 10PM-11PM	9	16	-43.8%	44	35	25.7%
11PM- 7AM Activity	2022	2021	Change	2022	2021	Change
American/Mesa/SkyWest/Envoy	0	0		0	0	
Delta/SkyWest Airlines	1	0	100.0%	1	0	100.0%
Hawaiian Airlines	0	0		2	0	100.0%
Southwest Airlines	0	2	-100.0%	2	2	0.0%
UPS	0	0		0	1	-100.0%
Subtotal 11PM-7AM	1	2	-50.0%	5	3	66.7%
TOTAL	10	18	-44.4%	49	38	28.9%

Notes:

0.4% (10 of 2,692) of total commercial operations occurred between 10pm - 7am.

0.3 flights - Nightly average for all late night (10:00 PM—7:00 AM) commercial flights, includes unanticipated delays.

0.03 flights - Nightly average for commercial flights after 11 PM.

AIRPORT NOISE VIOLATIONS						
LGB Current Month & Calendar Year-To-Date Statistics						
July 2022						
July				Calendar Year-To-Date		
Air Carrier Noise Violations	2022	2021	Change	2022	2021	Change
American/Mesa/SkyWest/Envoy	0	0		0	0	
Delta/SkyWest Airlines	0	0		0	0	
Hawaiian Airlines	0	0		1	0	100.0%
Southwest Airlines	0	1	-100.0%	0	1	-100.0%
UPS	0	0		0	1	-100.0%
Subtotal	0	1	-100.0%	1	2	-50.0%
Commuter Noise Violations	2022	2021	Change	2022	2021	Change
American/Mesa/SkyWest/Envoy	0	0		0	0	
Delta/SkyWest Airlines	0	0		0	0	
Subtotal	0	0		0	0	
Non-Commercial Noise Violations	2022	2021	Change	2022	2021	Change
All GA, Charter & Other	7	13	-46.2%	49	89	-44.9%
TOTAL	7	14	-50.0%	50	91	-45.1%
Monetary Fines	2022	2021		2022	2021	
Airport Surcharges	\$0	\$200		\$400	\$2,300	
Consent Decree	\$0	\$0		\$0	\$0	
TOTAL	\$0	\$200		\$400	\$2,300	

AIRPORT OPERATIONS						
LGB Current Month & Calendar Year-To-Date Statistics						
July 2022						
July				Calendar Year-To-Date		
Airport Operations (FAA)	2022	2021	Change	2022	2021	Change
Air Carrier + Commuter Carriers	2,692	2,174	23.8%	18,553	12,941	43.4%
Air Taxi + General Aviation	19,309	29,874	-35.4%	174,041	187,631	-7.2%
Military Operations	69	122	-43.4%	661	716	-7.7%
Total Aircraft Operations	22,070	32,170	-31.4%	193,255	201,288	-4.0%

Notes:

0.03% (7 of 22,001) of the Airport's total aircraft operations (Commercial & GA) resulted in an aircraft noise violation.
0.00% (0 of 2,692) of the Airport's Commercial operations (Commercial & Commuter) resulted in an aircraft noise violation.

AIRCRAFT NOISE VIOLATORS

July 2022

OWNERNAME	DATE	TIME	A/D	RWY	FLIGHT #	A/C TYPE	ORIG/DEST	SEL	LIMIT	STATUS
Thienes Engineering Inc.	7/1/2022	6:27:30	D	30		C525		92.8	90.0	VIO
Private	7/2/2022	3:33:56	D	30		P28A		81.9	79.0	VIO
TVPX Aircraft Solutions Inc. Trustee	7/2/2022	23:14:17	A	30		GLF4		87.2	79.0	VIO
Private	7/3/2022	2:25:16	D	30		SR20		83.7	79.0	VIO
Southwest Aircraft Charter LC	7/22/2022	23:13:42	A	30		LJ45		87.5	79.0	VIO
Air Med Services LLC	7/22/2022	23:37:06	A	30		LJ45		88.9	79.0	VIO
Private	7/23/2022	11:49:23	D	26R		COZY		96.2	92.0	VIO

DEFINITIONS:

A/C Type — Aircraft Type

A/D — Arrival/Departure

RWY — Runway

SEL — SENEL — Single Event Noise Exposure Level (dBA)

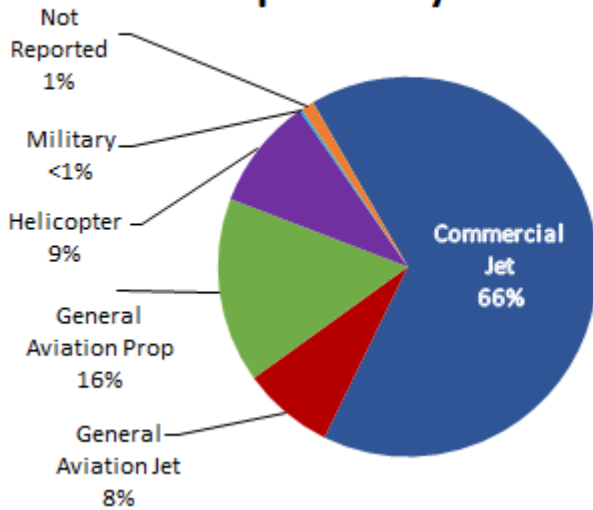
T—Touch and Go Operation

VIO —Violation

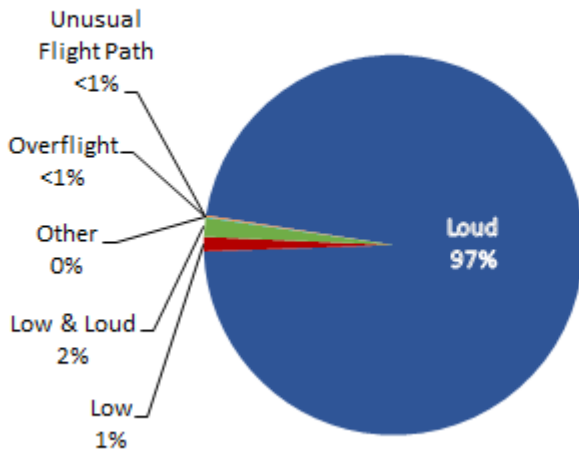
LGB AIRCRAFT NOISE COMPLAINTS

July 2022

Complaints by Aircraft Types



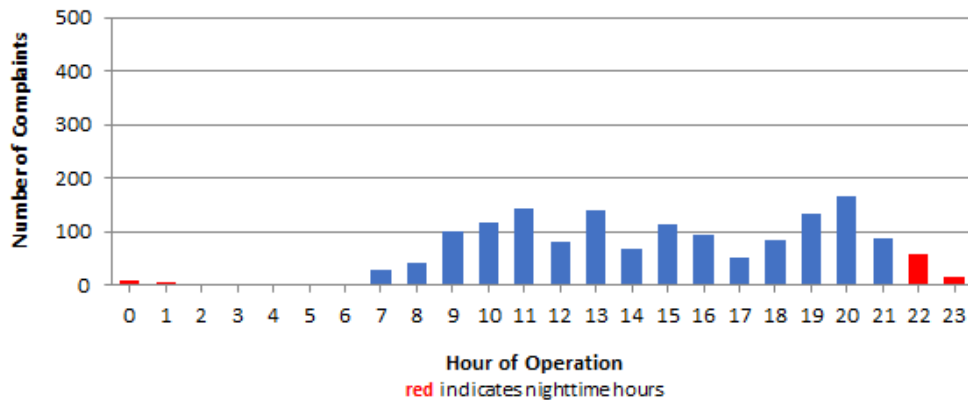
Complaints by Concern



Complaints by Zip Code

Zip Code	Complaints	Units
90242	37	1
90254	4	1
90278	97	1
90731	2	1
90745	1	1
90802	1	1
90803	1	1
90805	2	1
90807	80	24
90808	24	4
90813	1	1
90815	2	2
92626	317	1
92627	2	2
92647	519	1
92648	419	8
92649	30	3
92651	3	1
92660	4	1
92676	1	1
Not Reported	1	1
Grand Total	1,548	58

Complaints by Time of Operation





long beach airport



Long Beach Airport

4100 E. Donald Douglas Drive, Long Beach, CA 90808

www.lgb.org • lgbapt@longbeach.gov

Administration • (562) 570-2619