

Airport Advisory Commission

Katie Larson
Chair

Robert L. Allarte
Vice Chair

Christine Bos

Kenneth Brown

Wayne Chaney Sr.

Mireya LaFarga

Miles Nevin

Geetanjali Reuben

Dede Rossi

Airport Management

Cynthia Guidry
Director

Juan López-Ríos
Deputy Airport Director

Ken Mason
Executive Assistant

Claudia Lewis
Manager of Administration
& Finance

Ron Reeves
Airport Operations & Facilities
Manager

Ambi Thurai
Engineering Officer

Dale Worsham
Development Services Officer

Karl Zittel
Airside Operations Officer

Matthew Brookes
Airport Properties Officer

Scott Garrett
Facilities Management Officer

Mony Chhey
Financial Services Officer

Scott Korobkin
Superintendent of Safety and
Security

Kate Kuykendall
Public Affairs Officer

Ryan McMullan
Noise & Environmental Affairs
Officer



long beach
airport



Long Beach Airport Monthly Noise Report September 2022

COMMERCIAL AIRCRAFT LATE NIGHT ACTIVITY
LGB Current Month & Calendar Year-To-Date Statistics (10 PM- 7AM)
September 2022

September				Calendar Year-To-Date		
10PM - 11PM Activity	2022	2021	Change	2022	2021	Change
Air Carrier & Commuter Operations	2,634	2,121	24.2%	23,846	17,234	38.4%
American/Mesa/SkyWest/Envoy	0	0		0	2	-100.0%
Delta/SkyWest Airlines	0	0		22	11	100.0%
Hawaiian Airlines	0	0		2	3	-33.3%
Southwest Airlines	2	3	-33.3%	35	32	9.4%
UPS	0	0		1	1	0.0%
Subtotal 10PM-11PM	2	3	-33.3%	60	49	22.4%
11PM- 7AM Activity	2022	2021	Change	2022	2021	Change
American/Mesa/SkyWest/Envoy	0	0		0	0	
Delta/SkyWest Airlines	0	0		1	0	100.0%
Hawaiian Airlines	0	0		2	0	100.0%
Southwest Airlines	0	0		3	2	50.0%
UPS	0	0		0	1	-100.0%
Subtotal 11PM-7AM	0	0		6	3	100.0%
TOTAL	2	3	-33.3%	66	52	26.9%

Notes:

0.1% (2 of 2,634) of total commercial operations occurred between 10pm - 7am.

0.1 flights - Nightly average for all late night (10:00 PM—7:00 AM) commercial flights, includes unanticipated delays.

0.0 flights - Nightly average for commercial flights after 11 PM.

AIRPORT NOISE VIOLATIONS						
LGB Current Month & Calendar Year-To-Date Statistics						
September 2022						
September				Calendar Year-To-Date		
Air Carrier Noise Violations	2022	2021	Change	2022	2021	Change
American/Mesa/SkyWest/Envoy	0	0		0	0	
Delta/SkyWest Airlines	0	0		0	0	
Hawaiian Airlines	0	0		1	0	100.0%
Southwest Airlines	0	0		0	1	-100.0%
UPS	0	0		0	1	-100.0%
Subtotal	0	0		1	2	-50.0%
Commuter Noise Violations	2022	2021	Change	2022	2021	Change
American/Mesa/SkyWest/Envoy	0	0		0	0	
Delta/SkyWest Airlines	0	0		0	0	
Subtotal	0	0		0	0	
Non-Commercial Noise Violations	2022	2021	Change	2022	2021	Change
All GA, Charter & Other	3	11	-72.7%	55	109	-49.5%
TOTAL	3	11	-72.7%	56	111	-49.5%
Monetary Fines	2022	2021		2022	2021	
Airport Surcharges	\$0	\$600		\$400	\$3,300	
Consent Decree	\$0	\$0		\$0	\$0	
TOTAL	\$0	\$600		\$400	\$3,300	

AIRPORT OPERATIONS						
LGB Current Month & Calendar Year-To-Date Statistics						
September 2022						
September				Calendar Year-To-Date		
Airport Operations (FAA)	2022	2021	Change	2022	2021	Change
Air Carrier + Commuter Carriers	2,634	2,121	24.2%	23,846	17,234	38.4%
Air Taxi + General Aviation	27,917	25,902	7.8%	231,325	243,325	-4.9%
Military Operations	82	100	-18.0%	835	940	-11.2%
Total Aircraft Operations	30,633	28,123	8.9%	256,006	261,499	-2.1%

Notes:

0.01 % (3 of 30,551) of the Airport's total aircraft operations (Commercial & GA) resulted in an aircraft noise violation.

0.0% (0 of 2,634) of the Airport's Commercial operations (Commercial & Commuter) resulted in an aircraft noise violation.

AIRCRAFT NOISE VIOLATORS

September 2022

OWNERNAME	DATE	TIME	A/D	RWY	FLIGHT #	A/C TYPE	ORIG/DEST	SEL	LIMIT	STATUS
TRN Aviation LLC	9/5/2022	2:38:59	A	30		C550		84.1	79.0	VIO
Coulson Aviation (USA) Inc.	9/11/2022	2:59:24	A	30		C550		82.9	79.0	VIO
Private	9/17/2022	23:54:29	D	30		C421		87.6	79.0	VIO

DEFINITIONS:

A/C Type — Aircraft Type

RWY — Runway

A — Arrival

SEL—SENEL—Single Event Noise Exposure Level (dBA)

D — Departure

VIO—Violation

AIR CARRIER NOISE BUDGET PERFORMANCE

October 2021 - September 2022

RMT #	NOISE BUDGET	ACTUAL	PERCENT BUDGET USED
9	70.7	39.1	55.2%
10	84.6	58.4	69.0%

Source: Long Beach Airport Staff Calculations

DEFINITIONS:

RMT — Remote Monitoring Terminal

TOTAL NOISE BUDGET PERFORMANCE

October 2021 - September 2022

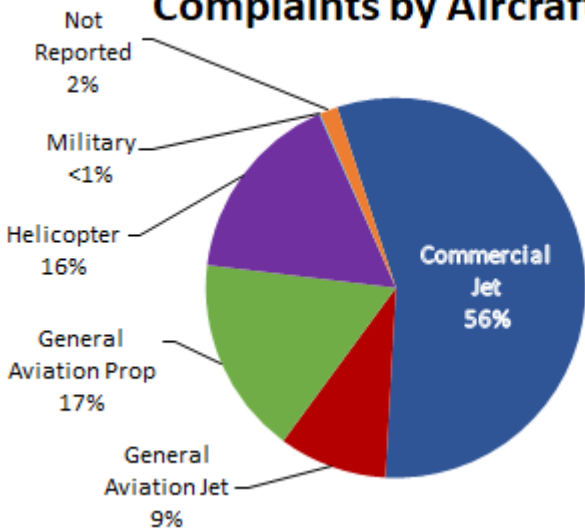
RMT #	NOISE BUDGET	ACTUAL	PERCENT BUDGET USED
9	102.7	47.9	46.7%
10	120.9	71.0	58.8%

Source: Long Beach Airport Staff Calculations

LGB AIRCRAFT NOISE COMPLAINTS

September 2022

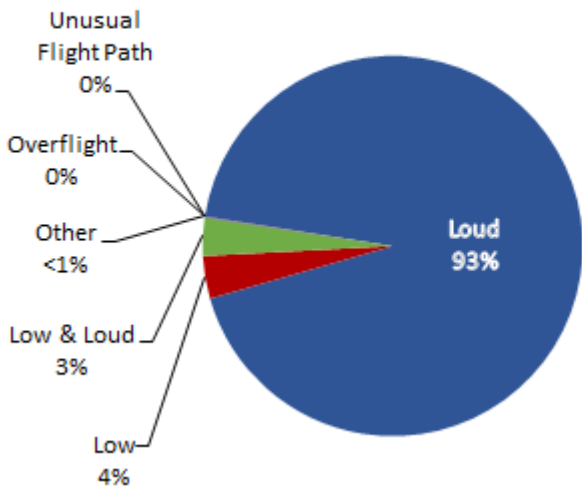
Complaints by Aircraft Types



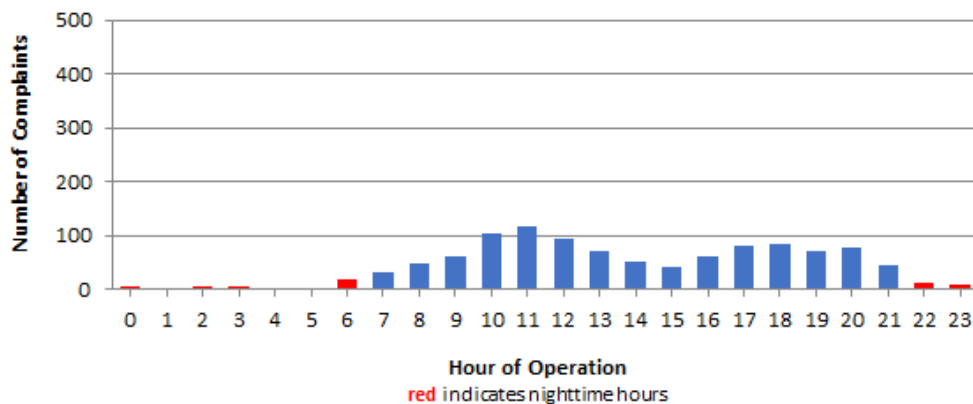
Complaints by Zip Code

Zip Code	Complaints	Units
90242	31	1
90254	6	1
90278	92	1
90630	1	1
90731	1	1
90740	1	1
90803	2	1
90805	2	2
90806	1	1
90807	61	20
90808	3	3
90815	3	3
92626	340	1
92647	434	2
92648	63	8
92649	42	3
92651	5	1
92656	3	1
92660	1	1
92661	5	1
92677	3	2
Not Reported	6	3
Grand Total	1,106	59

Complaints by Concern



Complaints by Time of Operation





long beach airport



Long Beach Airport

4100 E. Donald Douglas Drive, Long Beach, CA 90808

www.lgb.org • lgbapt@longbeach.gov

Administration • (562) 570-2619