

Airport Advisory Commission

Miles Nevin
Chair

Katie Larson
Vice Chair

Jeffrey Anderson

Christine Bos

Wayne Chaney Sr.

Robert L. Duarte Jr.

Mireya LaFarga

Geetanjali Reuben

Dede Rossi

Airport Management

Cynthia Guidry
Director

Juan López-Ríos
Deputy Airport Director

Ken Mason
Executive Assistant

Claudia Lewis
Manager of Administration
& Finance

Ron Reeves
Airport Operations & Facilities
Manager

Ambi Thurai
Engineering Officer

Dale Worsham
Administrative Officer

Karl Zittel
Airside Operations Officer

Matthew Brookes
Airport Properties Officer

Scott Garrett
Facilities Management Officer

Mony Chhey
Financial Services Officer

Scott Korobkin
Superintendent of Safety and
Security

Kate Kuykendall
Public Affairs Officer

Ryan McMullan
Noise & Environmental Affairs
Officer



long beach
airport



Long Beach Airport Monthly Noise Report March 2022

COMMERCIAL AIRCRAFT LATE NIGHT ACTIVITY
LGB Current Month & Calendar Year-To-Date Statistics (10 PM- 7AM)
March 2022

| March | | | | Calendar Year-To-Date | | |
|--|--------------|--------------|---------------|-----------------------|--------------|---------------|
| 10PM - 11PM Activity | 2022 | 2021 | Change | 2022 | 2021 | Change |
| Air Carrier & Commuter Operations | 2,738 | 1,874 | 46.1% | 7,880 | 4,450 | 77.1% |
| American/Mesa/SkyWest/Envoy | 0 | 0 | | 0 | 0 | |
| Delta/SkyWest Airlines | 6 | 1 | 500.0% | 7 | 1 | 600.0% |
| Hawaiian Airlines | 0 | 0 | | 1 | 1 | 0.0% |
| Southwest Airlines | 2 | 1 | 100.0% | 6 | 1 | 500.0% |
| UPS | 1 | 0 | 100.0% | 1 | 1 | 0.0% |
| Subtotal 10PM-11PM | 9 | 2 | 350.0% | 15 | 4 | 275.0% |
| 11PM- 7AM Activity | 2022 | 2021 | Change | 2022 | 2021 | Change |
| American/Mesa/SkyWest/Envoy | 0 | 0 | | 0 | 0 | |
| Delta/SkyWest Airlines | 0 | 0 | | 0 | 0 | |
| Hawaiian Airlines | 0 | 0 | | 2 | 0 | 100.0% |
| Southwest Airlines | 0 | 0 | | 1 | 0 | 100.0% |
| UPS | 0 | 0 | | 0 | 1 | -100.0% |
| Subtotal 11PM-7AM | 0 | 0 | | 3 | 1 | 200.0% |
| TOTAL | 9 | 2 | 350.0% | 18 | 5 | 260.0% |

Notes:

0.3% (9 of 2,738) of total commercial operations occurred between 10pm - 7am.

0.3 flights - Nightly average for all late night (10:00 PM—7:00 AM) commercial flights, includes unanticipated delays.

0.0 flights - Nightly average for commercial flights after 11 PM.

| AIRPORT NOISE VIOLATIONS | | | | | | |
|---|-------------|--------------|---------------|------------------------------|--------------|---------------|
| LGB Current Month & Calendar Year-To-Date Statistics | | | | | | |
| March 2022 | | | | | | |
| March | | | | Calendar Year-To-Date | | |
| Air Carrier Noise Violations | 2022 | 2021 | Change | 2022 | 2021 | Change |
| American/Mesa/SkyWest/Envoy | 0 | 0 | | 0 | 0 | |
| Delta/SkyWest Airlines | 0 | 0 | | 0 | 0 | |
| Hawaiian Airlines | 0 | 0 | | 1 | 0 | 100.0% |
| Southwest Airlines | 0 | 0 | | 0 | 0 | |
| UPS | 0 | 0 | | 0 | 1 | -100.0% |
| Subtotal | 0 | 0 | | 1 | 1 | 0.0% |
| Commuter Noise Violations | 2022 | 2021 | Change | 2022 | 2021 | Change |
| American/Mesa/SkyWest/Envoy | 0 | 0 | | 0 | 0 | |
| Delta/SkyWest Airlines | 0 | 0 | | 0 | 0 | |
| Subtotal | 0 | 0 | | 0 | 0 | |
| Non-Commercial Noise Violations | 2022 | 2021 | Change | 2022 | 2021 | Change |
| All GA, Charter & Other | 7 | 9 | -22.2% | 16 | 26 | 38.5% |
| TOTAL | 7 | 9 | -22.2% | 17 | 27 | -37.0% |
| Monetary Fines | 2022 | 2021 | | 2022 | 2021 | |
| Airport Surcharges | \$0 | \$200 | | \$100 | \$300 | |
| Consent Decree | \$0 | \$0 | | \$0 | \$0 | |
| TOTAL | \$0 | \$200 | | \$100 | \$300 | |

| AIRPORT OPERATIONS | | | | | | |
|---|---------------|---------------|---------------|------------------------------|---------------|---------------|
| LGB Current Month & Calendar Year-To-Date Statistics | | | | | | |
| March 2022 | | | | | | |
| March | | | | Calendar Year-To-Date | | |
| Airport Operations (FAA) | 2022 | 2021 | Change | 2022 | 2021 | Change |
| Air Carrier + Commuter Carriers | 2,738 | 1,874 | 46.1% | 7,880 | 4,450 | 77.1% |
| Air Taxi + General Aviation | 30,247 | 27,795 | 8.8% | 81,076 | 73,955 | 9.6% |
| Military Operations | 112 | 85 | 31.8% | 328 | 311 | 5.5% |
| Total Aircraft Operations | 33,097 | 29,754 | 11.2% | 89,284 | 78,716 | 13.4% |

Notes:

0.02% (7 of 32,985) of the Airport's total aircraft operations (Commercial & GA) resulted in an aircraft noise violation.
0.0% (0 of 2,738) of the Airport's Commercial operations (Commercial & Commuter) resulted in an aircraft noise violation.

AIRCRAFT NOISE VIOLATORS

March 2022

| OWNERNAME | DATE | TIME | A/D | RWY | FLIGHT # | A/C TYPE | ORIG/DEST | SEL | LIMIT | STATUS |
|-------------------------|-----------|----------|-----|-----|----------|----------|-----------|------|-------|--------|
| Kaiser Air, Inc. | 3/5/2022 | 22:10:31 | A | 30 | | B735 | | 95.4 | 90.0 | VIO |
| Jet Linx Aviation Corp. | 3/5/2022 | 23:24:05 | D | 30 | | CJ3 | | 82.8 | 79.0 | VIO |
| OCR Aviation | 3/13/2022 | 0:38:18 | A | 30 | | BE9T | | 81.5 | 79.0 | VIO |
| Premium Lifestyle Inc. | 3/18/2022 | 23:45:40 | D | 30 | | SR22 | | 83.8 | 79.0 | VIO |
| Private | 3/25/2022 | 23:21:12 | A | 30 | | PA44 | | 83.1 | 79.0 | VIO |
| N4488T LLC | 3/27/2022 | 12:05:23 | D | 08L | | P28R | | 90.2 | 88.0 | VIO |
| Private | 3/30/2022 | 15:39:42 | D | 26R | | M7 | | 94.8 | 92.0 | VIO |

DEFINITIONS:

A/C Type — Aircraft Type

A — Arrival

D — Departure

RWY — Runway

SEL — SENEL — Single Event Noise Exposure Level (dBA)

VIO—Violation

AIR CARRIER NOISE BUDGET PERFORMANCE

April 2021 - March 2022

| RMT # | NOISE BUDGET | ACTUAL | PERCENT BUDGET USED |
|-------|--------------|--------|---------------------|
| 9 | 70.7 | 32.8 | 46.3% |
| 10 | 84.6 | 50.3 | 59.4% |

Source: Long Beach Airport Staff Calculations

DEFINITIONS:

RMT — Remote Monitoring Terminal

TOTAL NOISE BUDGET PERFORMANCE

April 2021 - March 2022

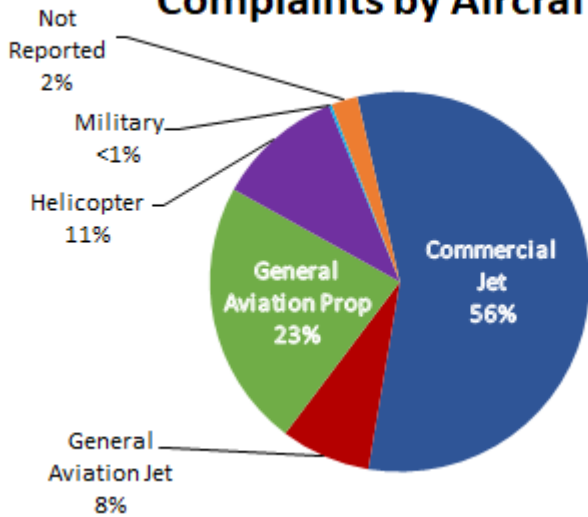
| RMT # | NOISE BUDGET | ACTUAL | PERCENT BUDGET USED |
|-------|--------------|--------|---------------------|
| 9 | 102.7 | 42.6 | 41.5% |
| 10 | 120.9 | 62.6 | 51.8% |

Source: Long Beach Airport Staff Calculations

LGB AIRCRAFT NOISE COMPLAINTS

March 2022

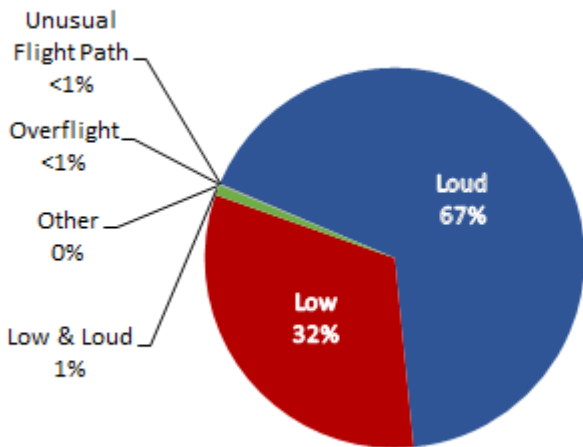
Complaints by Aircraft Types



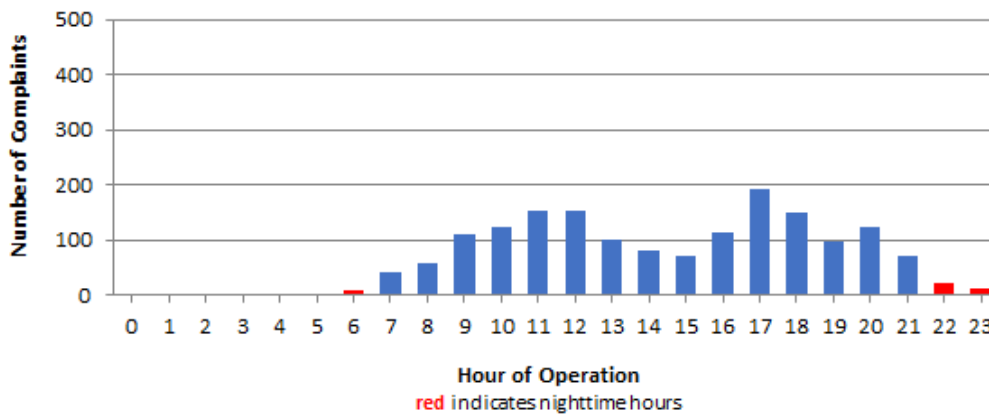
Complaints by Zip Code

| Zip Code | Complaints | Units |
|--------------------|--------------|-----------|
| 90242 | 19 | 1 |
| 90278 | 34 | 1 |
| 90713 | 1 | 1 |
| 90731 | 1 | 1 |
| 90740 | 1 | 1 |
| 90746 | 27 | 1 |
| 90755 | 26 | 1 |
| 90807 | 77 | 26 |
| 90808 | 6 | 5 |
| 91364 | 1 | 1 |
| 92612 | 50 | 1 |
| 92626 | 508 | 2 |
| 92627 | 3 | 1 |
| 92646 | 10 | 2 |
| 92647 | 812 | 3 |
| 92648 | 101 | 9 |
| 92649 | 1 | 1 |
| 92651 | 4 | 1 |
| 92656 | 12 | 1 |
| 92660 | 1 | 1 |
| 92676 | 1 | 1 |
| 92705 | 1 | 1 |
| Not Reported | 2 | 2 |
| Grand Total | 1,699 | 65 |

Complaints by Concern



Complaints by Time of Operation





long beach airport



Long Beach Airport

4100 E. Donald Douglas Drive, Long Beach, CA 90808

www.lgb.org • lgbapt@longbeach.gov

Administration • (562) 570-2619