



long beach
airport

where the going is easy®

Date: October 15, 2021
To: Thomas B. Modica, City Manager 
From: Cynthia Guidry, Director, Long Beach Airport 
For: Mayor and Members of the City Council
Subject: **Long Beach Airport Monthly Noise Report for August 2021**

Attached is the Long Beach Airport Monthly Noise Report for the month of August 2021.

If you have any questions or require additional information, please contact me at (562) 570-2605.

ATTACHMENT

CC: CHARLES PARKIN, CITY ATTORNEY
LAURA L. DOUD, CITY AUDITOR
DOUGLAS HAUBERT, CITY PROSECUTOR
LINDA TATUM, ASSISTANT CITY MANAGER
KEVIN JACKSON, DEPUTY CITY MANAGER
TERESA CHANDLER, DEPUTY CITY MANAGER
REBECCA G. GARNER, ADMINISTRATIVE DEPUTY CITY MANAGER
APRIL WALKER, ADMINISTRATIVE DEPUTY CITY MANAGER
MONIQUE DE LA GARZA, CITY CLERK
DEPARTMENT HEADS

Airport Advisory Commission

Miles Nevin
Chair

Katie Larson
Vice Chair

Jeffrey Anderson

Christine Bos

Wayne Chaney Sr.

Robert L. Duarte Jr.

Geetanjali Reuben



Airport Management

Cynthia Guidry
Director

Juan López-Ríos
Deputy Airport Director

Ken Mason
Executive Assistant

Claudia Lewis
Manager of Administration
& Finance

Ron Reeves
Airport Operations & Facilities
Manager

Ambi Thurai
Engineering Officer

Dale Worsham
Administrative Officer

Karl Zittel
Airsides Operations Officer

Matthew Brookes
Airport Properties Officer

Scott Garrett
Facilities Management Officer

Mony Chhey
Financial Services Officer

Scott Korobkin
Superintendent of Safety and
Security

Kate Kuykendall
Public Affairs Officer

Ryan McMullan
Noise & Environmental Affairs
Officer



Long Beach Airport Monthly Noise Report August 2021

COMMERCIAL AIRCRAFT LATE NIGHT ACTIVITY
LGB Current Month & Calendar Year-To-Date Statistics (10 PM- 7AM)
August 2021

August				Calendar Year-To-Date		
10PM - 11PM Activity	2021	2020	Change	2021	2020	Change
Air Carrier & Commuter Operations	2,172	997	117.9%	15,113	12,369	22.2%
American/Mesa/SkyWest/Envoy	0	0		2	0	100.0%
Delta/SkyWest Airlines	2	1	100.0%	11	8	37.5%
FedEx	0	0		0	0	
Hawaiian Airlines	1	0	100.0%	3	1	200.0%
JetBlue Airways	0	0		0	22	-100.0%
Southwest Airlines	8	0	100.0%	29	0	100.0%
UPS	0	0		1	0	100.0%
Subtotal 10PM-11PM	11	1	100.0%	46	31	48.4%
11PM- 7AM Activity	2021	2020	Change	2021	2020	Change
American/Mesa/SkyWest/Envoy	0	0		0	0	
Delta/SkyWest Airlines	0	0		0	0	
FedEx	0	0		0	0	
Hawaiian Airlines	0	0		0	2	-100.0%
JetBlue Airways	0	0		0	18	-100.0%
Southwest Airlines	0	0		2	0	
UPS	0	0		1	0	100.0%
Subtotal 11PM-7AM	0	0		3	20	-85.0%
TOTAL	11	1	1,000%	49	51	-3.9%

Notes:

0.5% (11 of 2,172) of total commercial operations occurred between 10pm - 7am.

0.4 flights - Nightly average for all late night (10:00 PM—7:00 AM) commercial flights, includes unanticipated delays.

0.0 flights - Nightly average for commercial flights after 11 PM.

AIRPORT NOISE VIOLATIONS						
LGB Current Month & Calendar Year-To-Date Statistics						
August 2021						
August				Calendar Year-To-Date		
Air Carrier Noise Violations	2021	2020	Change	2021	2020	Change
American/Mesa/SkyWest/Envoy	0	0		0	0	
Delta/SkyWest Airlines	0	0		0	1	-100.0%
FedEx	0	0		0	0	
Hawaiian Airlines	0	0		0	2	-100.0%
JetBlue Airways	0	0		0	16	-100.0%
Southwest Airlines	0	0		1	0	100.0%
UPS	0	0		1	0	100.0%
Subtotal	0	0		2	19	-89.5%
Commuter Noise Violations	2021	2020	Change	2021	2020	Change
American/Mesa/SkyWest/Envoy	0	0		0	0	
Delta/SkyWest Airlines	0	0		0	0	
Subtotal	0	0		0	0	
Non-Commercial Noise Violations	2021	2020	Change	2021	2020	Change
All GA, Charter & Other	9	16	-43.8%	98	70	40.0%
TOTAL	9	16	-43.8%	100	89	12.4%
Monetary Fines	2021	2020		2021	2020	
Airport Surcharges	\$400	\$800		\$2,700	\$7,600	
Consent Decree	\$0	\$0		\$0	\$78,000	
TOTAL	\$400	\$800		\$2,700	\$85,600	

AIRPORT OPERATIONS						
LGB Current Month & Calendar Year-To-Date Statistics						
August 2021						
August				Calendar Year-To-Date		
Airport Operations (FAA)	2021	2020	Change	2021	2020	Change
Air Carrier + Commuter Carriers	2,172	997	117.9%	15,113	12,369	22.2%
Air Taxi + General Aviation	29,792	28,593	4.2%	217,423	173,635	25.2%
Military Operations	124	124	0.0%	840	872	-3.7%
Total Aircraft Operations	32,088	29,714	8.0%	233,376	186,876	24.9%

Notes:

0.03% (9 of 31,964) of the Airport's total aircraft operations (Commercial & GA) resulted in an aircraft noise violation.
0.00% (0 of 2,172) of the Airport's Commercial operations (Commercial & Commuter) resulted in an aircraft noise violation.

AIRCRAFT NOISE VIOLATORS

August 2021

OWNERNAME	DATE	TIME	A/D	RWY	FLIGHT #	A/C TYPE	ORIG/DEST	SEL	LIMIT	STATUS
Private	8/3/2021	21:13:20	D	26R		C414		94.4	92.0	VIO
Go Vector One LLC	8/4/2021	3:52:40	D	30		SF50		84.8	79.0	VIO
OCR Aviation	8/5/2021	23:34:26	A	30		BE9T		83.3	79.0	VIO
SF1 Holdings LLC	8/6/2021	23:10:31	D	30		F2TH		85.2	79.0	VIO
Zero Seven Whiskey LLC	8/11/2021	23:17:40	D	30		PA32		81.4	79.0	VIO
Masimo 17 LLC	8/12/2021	2:31:03	A	30		GLF5		86.2	79.0	VIO
Private	8/12/2021	19:51:43	M	30		P28A		n/a	n/a	VIO
Swift Air LLC/iAero Airways	8/14/2021	0:45:56	A	30		B733		96.5	79.0	VIO
West Coast Charters LLC	8/19/2021	23:28:38	A	30		B350		85.6	79.0	VIO

DEFINITIONS:

A/C Type — Aircraft Type

A/D — Arrival/Departure

M—Missed Approach

RWY — Runway

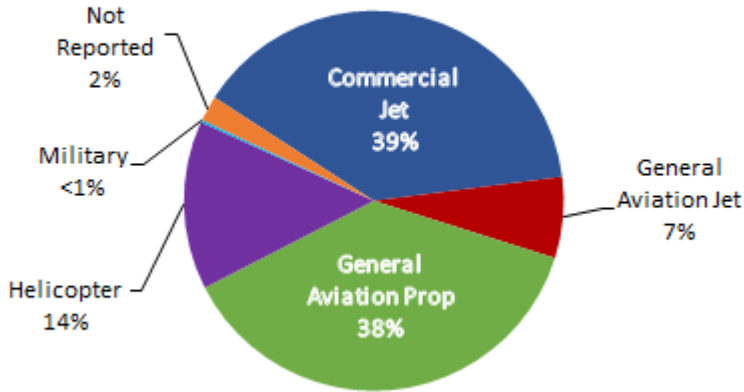
SEL — SENEL — Single Event Noise Exposure Level (dBA)

VIO — Violation

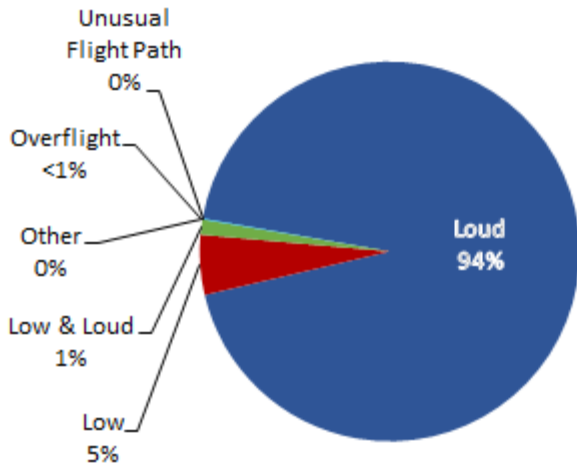
LGB AIRCRAFT NOISE COMPLAINTS

August 2021

Complaints by Aircraft Types



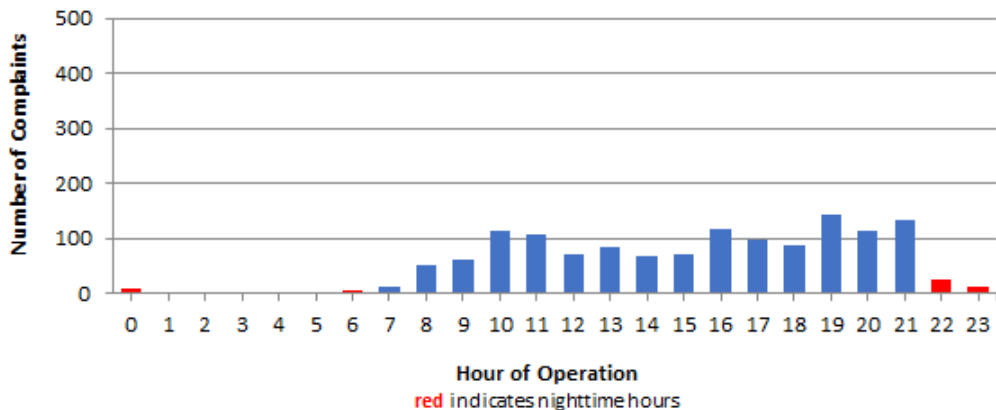
Complaints by Concern



Complaints by Zip Code

Zip Code	Complaints	Units
90242	3	1
90254	1	1
90278	64	1
90501	1	1
90505	1	1
90713	1	1
90740	2	2
90745	2	2
90746	2	1
90805	17	2
90807	72	13
90808	9	6
90815	7	3
91364	1	1
92604	1	1
92612	33	1
92626	3	1
92627	3	1
92646	2	1
92647	552	2
92648	184	11
92649	14	6
92651	5	2
92660	2	2
92661	6	1
92887	402	1
Not Reported	4	2
Grand Total	1,394	68

Complaints by Time of Operation





long beach airport



Long Beach Airport

4100 E. Donald Douglas Drive, Long Beach, CA 90808

www.lgb.org • lgbapt@longbeach.gov

Administration • (562) 570-2619