



long beach
airport

where the going is easy®

Date: November 18, 2021
To: Thomas B. Modica, City Manager *Uson*
From: Cynthia Guidry, Director, Long Beach Airport *CG*
For: Mayor and Members of the City Council
Subject: **Long Beach Airport Monthly Noise Report for September 2021**

Attached is the Long Beach Airport Monthly Noise Report for the month of September 2021.

If you have any questions or require additional information, please contact me at (562) 570-2605.

ATTACHMENT

CC: CHARLES PARKIN, CITY ATTORNEY
DOUGLAS P. HAUBERT, CITY PROSECUTOR
LAURA L. DOUD, CITY AUDITOR
LINDA F. TATUM, ASSISTANT CITY MANAGER
KEVIN JACKSON, DEPUTY CITY MANAGER
TERESA CHANDLER, DEPUTY CITY MANAGER
APRIL WALKER, ADMINISTRATIVE DEPUTY CITY MANAGER
MONIQUE DE LA GARZA, CITY CLERK
DEPARTMENT HEADS

Airport Advisory Commission

Miles Nevin
Chair

Katie Larson
Vice Chair

Jeffrey Anderson

Christine Bos

Wayne Chaney Sr.

Robert L. Duarte Jr.

Geetanjali Reuben



Airport Management

Cynthia Guidry
Director

Juan López-Ríos
Deputy Airport Director

Ken Mason
Executive Assistant

Claudia Lewis
Manager of Administration
& Finance

Ron Reeves
Airport Operations & Facilities
Manager

Ambi Thurai
Engineering Officer

Dale Worsham
Administrative Officer

Karl Zittel
Airsides Operations Officer

Matthew Brookes
Airport Properties Officer

Scott Garrett
Facilities Management Officer

Mony Chhey
Financial Services Officer

Scott Korobkin
Superintendent of Safety and
Security

Kate Kuykendall
Public Affairs Officer

Ryan McMullan
Noise & Environmental Affairs
Officer



Long Beach Airport Monthly Noise Report September 2021

COMMERCIAL AIRCRAFT LATE NIGHT ACTIVITY
LGB Current Month & Calendar Year-To-Date Statistics (10 PM- 7AM)
September 2021

September				Calendar Year-To-Date		
10PM - 11PM Activity	2021	2020	Change	2021	2020	Change
Air Carrier & Commuter Operations	2,121	1,103	92.3%	17,234	13,472	27.9%
American/Mesa/SkyWest/Envoy	0	0		2	0	100.0%
Delta/SkyWest Airlines	0	0		11	8	37.5%
FedEx	0	0		0	0	
Hawaiian Airlines	0	0		3	1	200.0%
JetBlue Airways	0	0		0	22	-100.0%
Southwest Airlines	3	0	100.0%	32	0	100.0%
UPS	0	0		1	0	100.0%
Subtotal 10PM-11PM	3	0	100.0%	49	31	58.1%
11PM- 7AM Activity	2021	2020	Change	2021	2020	Change
American/Mesa/SkyWest/Envoy	0	0		0	0	
Delta/SkyWest Airlines	0	0		0	0	
FedEx	0	0		0	0	
Hawaiian Airlines	0	0		0	2	-100.0%
JetBlue Airways	0	0		0	18	-100.0%
Southwest Airlines	0	0		2	0	100.0%
UPS	0	0		1	0	100.0%
Subtotal 11PM-7AM	0	0		3	20	-85.0%
TOTAL	3	0	100.0%	52	51	2.0%

Notes:

0.1% (3 of 2,121) of total commercial operations occurred between 10pm - 7am.

0.1 flights - Nightly average for all late night (10:00 PM—7:00 AM) commercial flights, includes unanticipated delays.

0.0 flights - Nightly average for commercial flights after 11 PM.

Of the 3 Late-Night Operations, one was due to poor weather conditions, one was due to air traffic control conditions and one occurred during the five-minute grace period.

AIRPORT NOISE VIOLATIONS						
LGB Current Month & Calendar Year-To-Date Statistics						
September 2021						
September				Calendar Year-To-Date		
Air Carrier Noise Violations	2021	2020	Change	2021	2020	Change
American/Mesa/SkyWest/Envoy	0	0		0	0	
Delta/SkyWest Airlines	0	0		0	1	-100.0%
FedEx	0	0		0	0	
Hawaiian Airlines	0	0		0	2	-100.0%
JetBlue Airways	0	0		0	16	-100.0%
Southwest Airlines	0	0		1	0	100.0%
UPS	0	0		1	0	100.0%
Subtotal	0	0		2	19	-89.5%
Commuter Noise Violations	2021	2020	Change	2021	2020	Change
American/Mesa/SkyWest/Envoy	0	0		0	0	
Delta/SkyWest Airlines	0	0		0	0	
Subtotal	0	0		0	0	
Non-Commercial Noise Violations	2021	2020	Change	2021	2020	Change
All GA, Charter & Other	11	11	0.0%	109	81	34.6%
TOTAL	11	11	0.0%	111	100	11.0%
Monetary Fines	2021	2020		2021	2020	
Airport Surcharges	\$600	\$100		\$3,300	\$7,700	
Consent Decree	\$0	\$0		\$0	\$78,000	
TOTAL	\$600	\$100		\$3,300	\$85,700	

AIRPORT OPERATIONS						
LGB Current Month & Calendar Year-To-Date Statistics						
September 2021						
September				Calendar Year-To-Date		
Airport Operations (FAA)	2021	2020	Change	2021	2020	Change
Air Carrier + Commuter Carriers	2,121	1,103	92.3%	17,234	13,472	27.9%
Air Taxi + General Aviation	25,902	25,394	2.0%	243,325	199,029	22.3%
Military Operations	100	89	12.4%	940	961	-2.2%
Total Aircraft Operations	28,123	26,586	5.8%	261,499	213,462	22.5%

Notes:

0.04% (11 of 28,023) of the Airport's total aircraft operations (Commercial & GA) resulted in an aircraft noise violation.
0.0% (0 of 2,121) of the Airport's Commercial operations (Commercial & Commuter) resulted in an aircraft noise violation.

AIRCRAFT NOISE VIOLATORS

September 2021

OWNERNAME	DATE	TIME	A/D	RWY	FLIGHT #	A/C TYPE	ORIG/DEST	SEL	LIMIT	STATUS
Swift Air LLC/ iAero Airways	9/3/2021	23:19:17	D	30		B738		91.0	79.0	VIO
Sierra One Tech Inc.	9/3/2021	23:38:13	D	30		C210		81.7	79.0	VIO
Skywave Associates Inc.	9/4/2021	23:32:41	A	30		C340		83.1	79.0	VIO
N711 Aviation LLC	9/7/2021	4:07:52	A	30		GLF4		91.1	79.0	VIO
USA Jet Airlines Inc.	9/9/2021	13:23:20	D	30		DC93		105.6	102.5	VIO
X Aviation Group LLC	9/12/2021	3:53:31	A	30		MD87		94.3	79.0	VIO
Sky Pilot Aviation Corp.	9/12/2021	23:26:04	D	30		PA32		83.9	79.0	VIO
Swift Air LLC/ iAero Airways	9/17/2021	1:19:55	A	30		B738		93.0	79.0	VIO
Lion Aviation LLC	9/19/2021	10:40:15	A	26R		GLF4		91.3	88.0	VIO
Hawkerblue LLC	9/21/2021	10:39:34	A	26R		BE40		91.0	88.0	VIO
TS Aviation LLC	9/24/2021	0:35:14	A	30		GLF3		97.6	79.0	VIO

DEFINITIONS:

A/C Type — Aircraft Type

RWY — Runway

A — Arrival

SEL — SENEL — Single Event Noise Exposure Level (dBA)

D — Departure

VIO—Violation

AIR CARRIER NOISE BUDGET PERFORMANCE

October 2020 - September 2021

RMT #	NOISE BUDGET	ACTUAL	PERCENT BUDGET USED
9	70.7	21.5	30.4%
10	84.6	35.2	41.6%

Source: Long Beach Airport Staff Calculations

DEFINITIONS:

RMT — Remote Monitoring Terminal

TOTAL NOISE BUDGET PERFORMANCE

October 2020 - September 2021

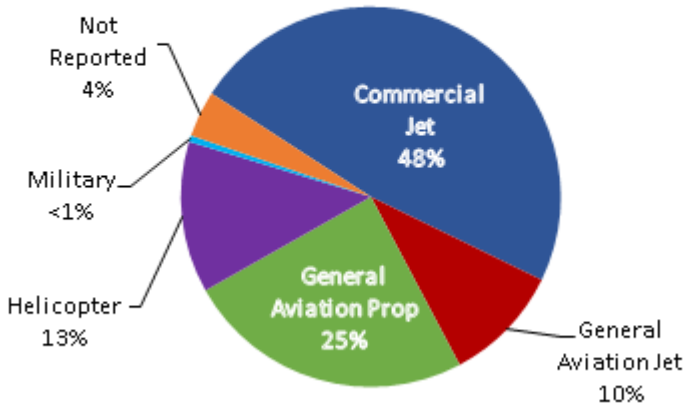
RMT #	NOISE BUDGET	ACTUAL	PERCENT BUDGET USED
9	102.7	29.3	28.5%
10	120.9	45.8	37.9%

Source: Long Beach Airport Staff Calculations

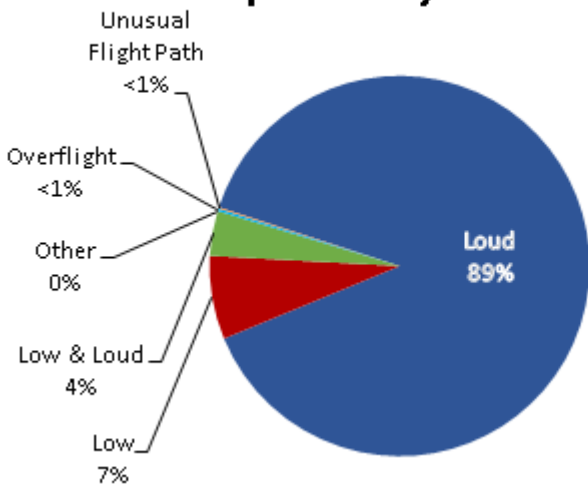
LGB AIRCRAFT NOISE COMPLAINTS

September 2021

Complaints by Aircraft Types



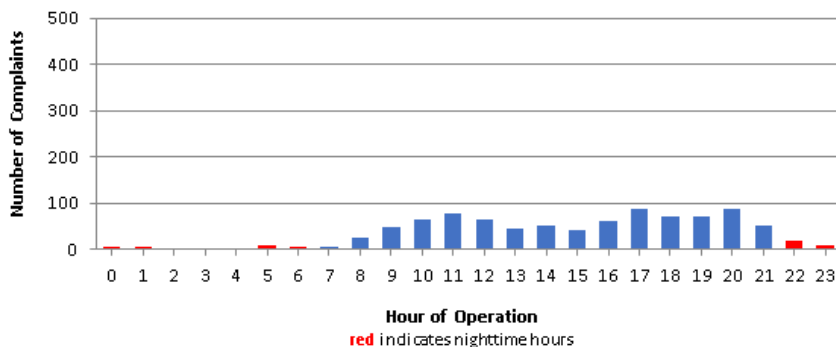
Complaints by Concern



Complaints by Zip Code

Zip Code	Complaints	Units
90242	3	1
90254	4	1
90277	1	1
90278	82	1
90602	1	1
90712	1	1
90713	1	1
90720	1	1
90731	2	1
90740	2	1
90745	1	1
90746	13	1
90805	5	2
90806	1	1
90807	87	25
90808	5	4
90810	2	1
90814	1	1
90815	8	6
91364	2	1
92612	25	1
92626	247	1
92627	6	1
92647	205	3
92648	165	10
92649	24	3
92651	4	2
92656	2	1
92660	4	2
92661	5	1
92683	1	1
Not Reported	5	3
Grand Total	916	82

Complaints by Time of Operation





long beach airport



Long Beach Airport

4100 E. Donald Douglas Drive, Long Beach, CA 90808

www.lgb.org • lgbapt@longbeach.gov

Administration • (562) 570-2619