





**long beach**  
airport

where the going is easy®

**Date:** March 17, 2021  
**To:** Thomas B. Modica, City Manager   
**From:** Cynthia Guidry, Director, Long Beach Airport   
**For:** Mayor and Members of the City Council  
**Subject:** **Long Beach Airport Monthly Noise Report for January 2021**

---

Attached is the Long Beach Airport Monthly Noise Report for the month of January 2021.

If you have any questions or require additional information, please contact me at (562) 570-2605.

ATTACHMENT

CC: CHARLES PARKIN, CITY ATTORNEY  
LAURA L. DOUD, CITY AUDITOR  
DOUGLAS HAUBERT, CITY PROSECUTOR  
LINDA TATUM, ASSISTANT CITY MANAGER  
KEVIN J. JACKSON, DEPUTY CITY MANAGER  
TERESA CHANDLER, DEPUTY CITY MANAGER  
REBECCA GUZMAN GARNER, ADMINISTRATIVE DEPUTY CITY MANAGER

## Airport Advisory Commission

**Alvaro Castillo**  
Chair

**Wayne Chaney Sr.**  
Vice Chair

**Jeffrey Anderson**

**Robert L. Duarte Jr.**

**Katie Larson**

**Rita Nayak**

**Miles Nevin**

**Geetanjali Reuben**



**long beach**  
airport



## Airport Management

**Cynthia Guidry**  
Director

**Juan López-Ríos**  
Deputy Airport Director

**Ken Mason**  
Executive Assistant

**Claudia Lewis**  
Manager of Administration  
& Finance

**Ron Reeves**  
Airport Operations & Facilities  
Manager

**Ambi Thurai**  
Engineering Officer

**Dale Worsham**  
Administrative Officer

**Karl Zittel**  
Airsides Operations Officer

**Matthew Brookes**  
Airport Properties Officer

**Scott Garrett**  
Facilities Management Officer

**Mony Chhey**  
Financial Services Officer

**Scott Korobkin**  
Superintendent of Safety and  
Security

**Kate Kuykendall**  
Public Affairs Officer

**Ryan McMullan**  
Noise & Environmental Affairs  
Officer



# Long Beach Airport Monthly Noise Report January 2021

**COMMERCIAL AIRCRAFT LATE NIGHT ACTIVITY**  
**LGB Current Month & Calendar Year-To-Date Statistics (10 PM- 7AM)**  
**January 2021**

January				Calendar Year-To-Date		
10PM - 11PM Activity	2021	2020	Change	2021	2020	Change
<b>Air Carrier &amp; Commuter Operations</b>	<b>1,370</b>	<b>2,917</b>	<b>-53.0%</b>	<b>1,370</b>	<b>2,917</b>	<b>-53.0%</b>
American/Mesa/SkyWest Airlines	0	0		0	0	
Delta/SkyWest/Compass Airlines	0	3	-100.0%	0	3	-100.0%
FedEx	0	0		0	0	
Hawaiian Airlines	0	0		0	0	
JetBlue Airways	0	5	-100.0%	0	5	-100.0%
Southwest Airlines	0	0		0	0	
UPS	0	0		0	0	
<b>Subtotal 10PM-11PM</b>	<b>0</b>	<b>8</b>	<b>-100.0%</b>	<b>0</b>	<b>8</b>	<b>-100.0%</b>
11PM- 7AM Activity	2021	2020	Change	2021	2020	Change
American/Mesa/SkyWest Airlines	0	0		0	0	
Delta/SkyWest/Compass Airlines	0	0		0	0	
FedEx	0	0		0	0	
Hawaiian Airlines	0	1	-100.0%	0	1	-100.0%
JetBlue Airways	0	4	-100.0%	0	4	-100.0%
Southwest Airlines	0	0		0	0	
UPS	0	0		0	0	
<b>Subtotal 11PM-7AM</b>	<b>0</b>	<b>5</b>	<b>-100.0%</b>	<b>0</b>	<b>5</b>	<b>-100.0%</b>
<b>TOTAL</b>	<b>0</b>	<b>13</b>	<b>-100.0%</b>	<b>0</b>	<b>13</b>	<b>-100.0%</b>

Notes:

0.0% (0 of 1,370) of total commercial operations occurred between 10pm - 7am.

0.0 flights - Nightly average for all late night (10:00 PM—7:00 AM) commercial flights, includes unanticipated delays.

0.0 flights - Nightly average for commercial flights after 11 PM.

<b>AIRPORT NOISE VIOLATIONS</b>						
<b>LGB Current Month &amp; Calendar Year-To-Date Statistics</b>						
<b>January 2021</b>						
<b>January</b>				<b>Calendar Year-To-Date</b>		
<b>Air Carrier Noise Violations</b>	<b>2021</b>	<b>2020</b>	<b>Change</b>	<b>2021</b>	<b>2020</b>	<b>Change</b>
American/Mesa/SkyWest	0	0		0	0	-100.0%
Delta/SkyWest/Compass	0	1	-100.0%	0	1	-100.0%
FedEx	0	0		0	0	
Hawaiian Airlines	0	1	-100.0%	0	1	-100.0%
JetBlue Airways	0	5	-100.0%	0	5	-100.0%
Southwest Airlines	0	0		0	0	
UPS	0	0		0	0	
<b>Subtotal</b>	<b>0</b>	<b>7</b>	<b>-100.0%</b>	<b>0</b>	<b>7</b>	<b>-100.0%</b>
<b>Commuter Noise Violations</b>	<b>2021</b>	<b>2020</b>	<b>Change</b>	<b>2021</b>	<b>2020</b>	<b>Change</b>
American/Mesa/SkyWest	0	0		0	0	
Delta/SkyWest/Compass	0	0		0	0	
<b>Subtotal</b>	<b>0</b>	<b>0</b>		<b>0</b>	<b>0</b>	
<b>Non-Commercial Noise Violations</b>	<b>2021</b>	<b>2020</b>	<b>Change</b>	<b>2021</b>	<b>2020</b>	<b>Change</b>
All GA, Charter & Other	7	10	-30.0%	7	10	-30.0%
<b>TOTAL</b>	<b>7</b>	<b>17</b>	<b>-58.8%</b>	<b>7</b>	<b>17</b>	<b>-58.8%</b>
<b>Monetary Fines</b>	<b>2021</b>	<b>2020</b>		<b>2021</b>	<b>2020</b>	
Airport Surcharges	\$100	\$2,400		\$100	\$2,400	
Consent Decree	\$0	\$24,000		\$0	\$24,000	
<b>TOTAL</b>	<b>\$100</b>	<b>\$26,400</b>		<b>\$100</b>	<b>\$26,400</b>	

<b>AIRPORT OPERATIONS</b>						
<b>LGB Current Month &amp; Calendar Year-To-Date Statistics</b>						
<b>January 2021</b>						
<b>January</b>				<b>Calendar Year-To-Date</b>		
<b>Airport Operations (FAA)</b>	<b>2021</b>	<b>2020</b>	<b>Change</b>	<b>2021</b>	<b>2020</b>	<b>Change</b>
Air Carrier + Commuter Carriers	1,370	2,917	-53.0%	1,370	2,917	-53.0%
Air Taxi + General Aviation	22,938	23,494	-2.4%	22,938	23,494	-2.4%
Military Operations	113	89	27.0%	113	89	27.0%
<b>Total Aircraft Operations</b>	<b>24,421</b>	<b>26,500</b>	<b>-7.8%</b>	<b>24,421</b>	<b>26,500</b>	<b>-7.8%</b>

Notes:

0.03% (8 of 24,308 of the Airport's total aircraft operations (Commercial & GA) resulted in an aircraft noise violation.

0.0% (0 of 1,370) of the Airport's Commercial operations (Commercial & Commuter) resulted in an aircraft noise violation.

# AIRCRAFT NOISE VIOLATORS

## January 2021

OWNERNAME	DATE	TIME	A/D	RWY	FLIGHT #	A/C TYPE	ORIG/DEST	SEL	LIMIT	STATUS
FKM King Air LLC	1/3/2021	23:06:13	A	30		BE20		83.2	79.0	VIO
S R Global Partners LLC	1/6/2021	16:14:06	T	26R		SR22		95.3	92.0	VIO
Go Vector One LLC	1/12/2021	5:49:38	D	30		SR22		87.3	79.0	VIO
Sperax Inc.	1/13/2021	0:59:03	A	30		PA46		82.5	79.0	VIO
Americor Management LLC	1/16/2021	1:33:19	A	30		GLF4		85.4	79.0	VIO
KZ Aero LLC	1/16/2021	15:29:30	T	26R		SR20		n/a	n/a	VIO
Unique Educational Experiences	1/23/2021	16:35:21	T	26L		C172		n/a	n/a	VIO

**DEFINITIONS:**

**A/C Type** — Aircraft Type

**A** — Arrival

**D** — Departure

**RWY** — Runway

**SEL** — SENEL — Single Event Noise Exposure Level (dBA)

**VIO**—Violation

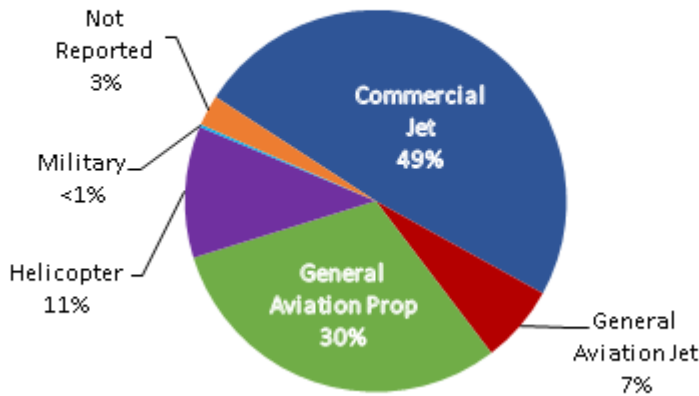
**T**—Touch and Go

**VIO**—Violation

# LGB AIRCRAFT NOISE COMPLAINTS

## January 2021

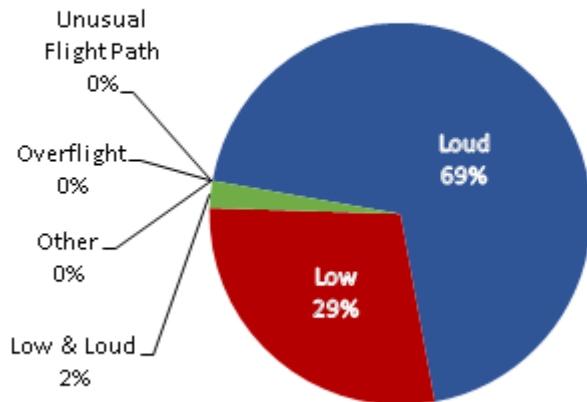
### Complaints by Aircraft Types



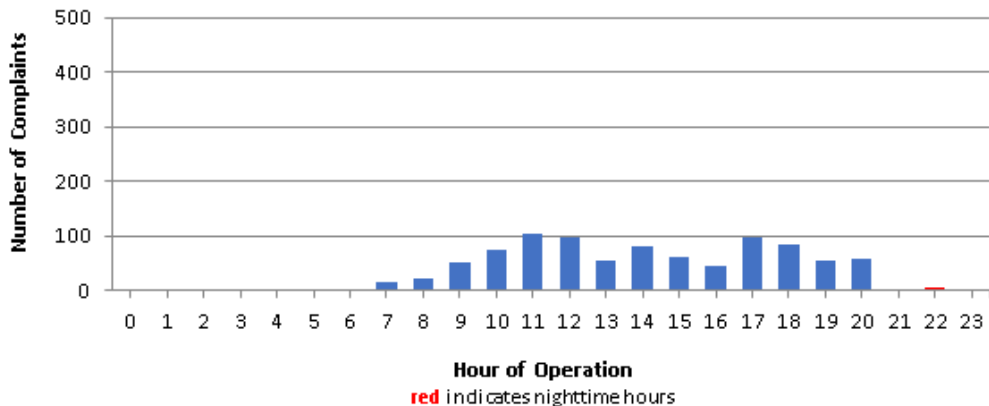
### Complaints by Zip Code

Zip Code	Complaints	Units
90242	9	1
90278	113	1
90746	17	2
90805	25	4
90807	23	10
90808	1	1
90815	2	1
91364	2	1
92612	52	1
92626	218	1
92627	15	1
92629	1	1
92647	388	1
92648	38	6
92649	1	1
92651	4	2
92653	2	1
92656	4	2
92660	6	2
92705	1	1
Not Reported	1	1
<b>Grand Total</b>	<b>923</b>	<b>42</b>

### Complaints by Concern



### Complaints by Time of Operation





# long beach airport



## Long Beach Airport

4100 E. Donald Douglas Drive, Long Beach, CA 90808

[www.lgb.org](http://www.lgb.org) • [lgbapt@longbeach.gov](mailto:lgbapt@longbeach.gov)

Administration • (562) 570-2619