





long beach
airport

where the going is easy®

Date: July 12, 2021
To: Thomas B. Modica, City Manager 
From: Cynthia Guidry, Director, Long Beach Airport 
For: Mayor and Members of the City Council
Subject: **Long Beach Airport Monthly Noise Report for May 2021**

Attached is the Long Beach Airport Monthly Noise Report for the month of May 2021.

If you have any questions or require additional information, please contact me at (562) 570-2605.

ATTACHMENT

CC: CHARLES PARKIN, CITY ATTORNEY
LAURA L. DOUD, CITY AUDITOR
DOUGLAS HAUBERT, CITY PROSECUTOR
LINDA TATUM, ASSISTANT CITY MANAGER
KEVIN J. JACKSON, DEPUTY CITY MANAGER
TERESA CHANDLER, DEPUTY CITY MANAGER
REBECCA GUZMAN GARNER, ADMINISTRATIVE DEPUTY CITY MANAGER

Airport Advisory Commission

Miles Nevin
Chair

Alvaro Castillo
Vice Chair

Jeffrey Anderson

Christine Bos

Wayne Chaney Sr.

Robert L. Duarte Jr.

Katie Larson

Rita Nayak

Geetanjali Reuben

Airport Management

Cynthia Guidry
Director

Juan López-Ríos
Deputy Airport Director

Ken Mason
Executive Assistant

Claudia Lewis
Manager of Administration
& Finance

Ron Reeves
Airport Operations & Facilities
Manager

Ambi Thurai
Engineering Officer

Dale Worsham
Administrative Officer

Karl Zittel
Airsides Operations Officer

Matthew Brookes
Airport Properties Officer

Scott Garrett
Facilities Management Officer

Mony Chhey
Financial Services Officer

Scott Korobkin
Superintendent of Safety and
Security

Kate Kuykendall
Public Affairs Officer

Ryan McMullan
Noise & Environmental Affairs
Officer



Long Beach Airport Monthly Noise Report May 2021

COMMERCIAL AIRCRAFT LATE NIGHT ACTIVITY
LGB Current Month & Calendar Year-To-Date Statistics (10 PM- 7AM)
May 2021

May				Calendar Year-To-Date		
10PM - 11PM Activity	2021	2020	Change	2021	2020	Change
Air Carrier & Commuter Operations	2,155	600	259.2%	8,679	9,392	-7.6%
American/Mesa/SkyWest/Envoy	1	0	100.0%	1	0	100.0%
Delta/SkyWest Airlines	1	0	100.0%	5	7	-28.6%
FedEx	0	0		0	0	
Hawaiian Airlines	0	0		1	1	0.0%
JetBlue Airways	0	0		0	21	-100.0%
Southwest Airlines	2	0	100.0%	4	0	100.0%
UPS	0	0		1	0	100.0%
Subtotal 10PM-11PM	4	0	100.0%	12	29	-58.6%
11PM- 7AM Activity	2021	2020	Change	2021	2020	Change
American/Mesa/SkyWest/Envoy	0	0		0	0	
Delta/SkyWest Airlines	0	0		0	0	
FedEx	0	0		0	0	
Hawaiian Airlines	0	0		0	2	-100.0%
JetBlue Airways	0	0		0	16	-100.0%
Southwest Airlines	0	0		0	0	
UPS	0	0		1	0	100.0%
Subtotal 11PM-7AM	0	0		1	18	-94.4%
TOTAL	4	0	100.0%	13	47	-72.3%

Notes:

0.2% (4 of 2,021) of total commercial operations occurred between 10pm - 7am.

0.1 flights - Nightly average for all late night (10:00 PM—7:00 AM) commercial flights, includes unanticipated delays.

0.0 flights - Nightly average for commercial flights after 11 PM.

AIRPORT NOISE VIOLATIONS						
LGB Current Month & Calendar Year-To-Date Statistics						
May 2021						
May				Calendar Year-To-Date		
Air Carrier Noise Violations	2021	2020	Change	2021	2020	Change
American/Mesa/SkyWest/Envoy	0	0		0	0	
Delta/SkyWest Airlines	0	0		0	1	-100.0%
FedEx	0	0		0	0	
Hawaiian Airlines	0	0		0	2	-100.0%
JetBlue Airways	0	0		0	14	-100.0%
Southwest Airlines	0	0		0	0	
UPS	0	0		1	0	100.0%
Subtotal	0	0		1	17	-94.1%
Commuter Noise Violations	2021	2020	Change	2021	2020	Change
American/Mesa/SkyWest/Envoy	0	0		0	0	
Delta/SkyWest Airlines	0	0		0	0	
Subtotal	0	0		0	0	
Non-Commercial Noise Violations	2021	2020	Change	2021	2020	Change
All GA, Charter & Other	25	1	2,400.0%	59	37	59.5%
TOTAL	25	1	2,400.0%	60	54	11.1%
Monetary Fines	2021	2020		2021	2020	
Airport Surcharges	\$900	\$0		\$1,500	\$6,500	
Consent Decree	\$0	\$0		\$0	\$72,000	
TOTAL	\$900	\$0		\$1,500	\$78,500	

AIRPORT OPERATIONS						
LGB Current Month & Calendar Year-To-Date Statistics						
May 2021						
May				Calendar Year-To-Date		
Airport Operations (FAA)	2021	2020	Change	2021	2020	Change
Air Carrier + Commuter Carriers	2,155	600	259.2%	8,679	9,392	-7.6%
Air Taxi + General Aviation	27,278	19,808	37.7%	129,236	98,248	31.5%
Military Operations	86	111	-22.5%	470	522	-10.0%
Total Aircraft Operations	29,519	20,519	43.9%	138,385	108,162	27.9%

Notes:

0.08% (25 of 29,433) of the Airport's total aircraft operations (Commercial & GA) resulted in an aircraft noise violation.
0.0% (0 of 2,155) of the Airport's Commercial operations (Commercial & Commuter) resulted in an aircraft noise violation.

AIRCRAFT NOISE VIOLATORS

May 2021

OWNERNAME	DATE	TIME	A/D	RWY	FLIGHT #	A/C TYPE	ORIG/DEST	SEL	LIMIT	STATUS
Private	5/3/2021	19:26:00	T	26L		SLG2				VIO
OCR Aviation	5/3/2021	23:53:07	A	30		C525		85.6	79.0	VIO
Private	5/3/2021	23:57:14	A	30		PA44		82.5	79.0	VIO
Private	5/4/2021	20:28:00	M	30		C72R				VIO
U.S. Home Corp.	5/5/2021	1:35:01	A	30		GL5T		88.3	79.0	VIO
Private	5/14/2021	8:57:13	D	26R		HXB		94.8	92.0	VIO
Ave Marina Aviation Co	5/15/2021	15:45:18	M	30		BE76				VIO
Mann Aviation Inc.	5/15/2021	16:45:07	T	26L		C172				VIO
Unique Educational Experiences	5/15/2021	16:56:43	T	26L		C172				VIO
Moran Consulting Corp.	5/17/2021	23:13:23	A	30		BE35		81.1	79.0	VIO
E & R Aviation Services	5/22/2021	15:21:35	T	26R		C172				VIO
Private	5/23/2021	15:21:00	T	26L		LTSP				VIO
Private	5/23/2021	17:21:00	M	30		C172				VIO
Baja Aerojet Services	5/24/2021	23:35:37	A	30		BE20		84.6	79.0	VIO
Jeffery and Weiss Holdings LLC	5/25/2021	20:40:45	T	26L		C172				VIO
RLB Holdings Transportation LLC	5/26/2021	0:03:05	A	30		F900		86.9	79.0	VIO
Private	5/26/2021	12:21:04	D	08L		PA32		90.2	88.0	VIO
Open Sky Airways	5/27/2021	19:29:00	M	30		C172				VIO
Private	5/29/2021	17:47:00	M	30		C172				VIO
Flight Operations Aircraft LLC	5/29/2021	18:50:00	M	30		C172				VIO
Private	5/30/2021	18:21:00	M	30		C172				VIO
Jade Air	5/31/2021	15:53:00	T	26R		C172				VIO
Private	5/31/2021	16:01:00	T	26L		C172				VIO
Private	5/31/2021	18:03:00	T	26R		C152				VIO
Private	5/31/2021	20:03:00	M	30		C172				VIO

DEFINITIONS:

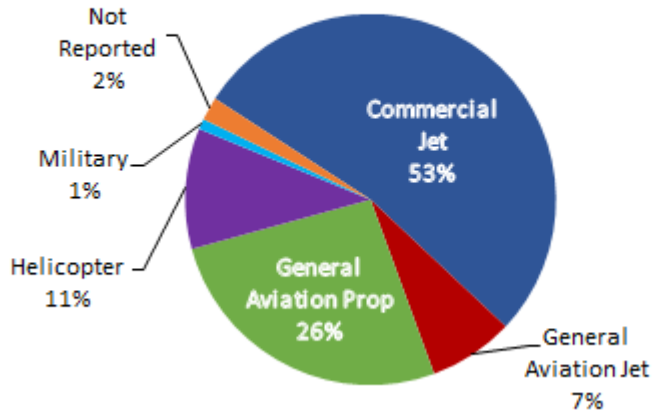
A/C Type — Aircraft Type
A/D — Arrival/Departure
M — Missed Approach
RWY — Runway

SEL — SENEL — Single Event Noise Exposure Level (dBA)
T—Touch and Go
V—Violation

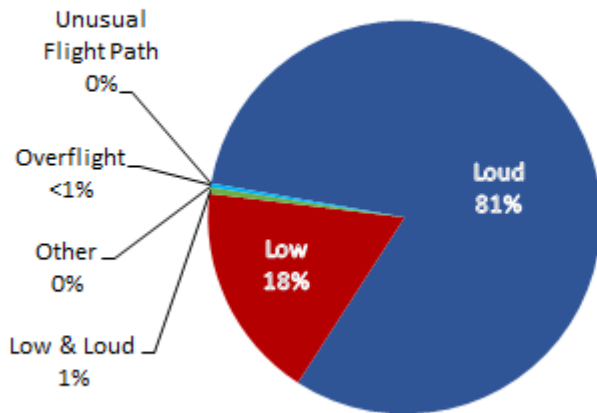
LGB AIRCRAFT NOISE COMPLAINTS

May 2021

Complaints by Aircraft Types



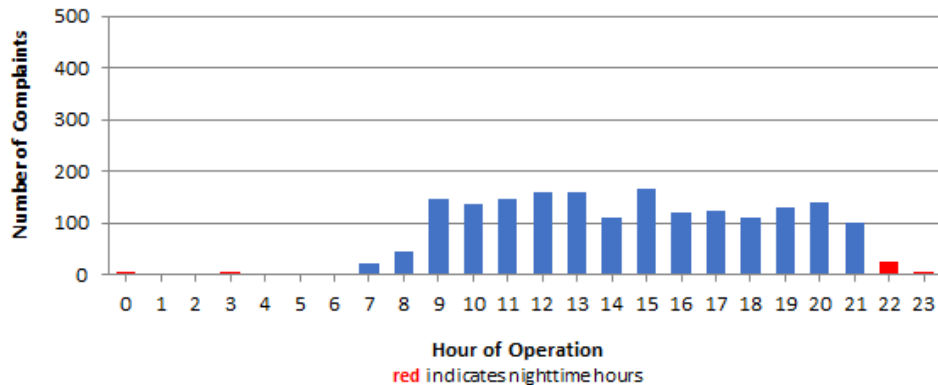
Complaints by Concern



Complaints by Zip Code

Zip Code	Complaints	Units
90242	13	1
90278	42	1
90712	2	2
90740	1	1
90745	2	2
90746	10	4
90803	1	1
90805	35	3
90807	110	22
90808	2	2
90815	3	3
91364	2	1
92612	106	1
92626	456	1
92627	12	2
92646	7	1
92647	722	3
92648	302	10
92649	32	3
92660	4	1
92661	2	1
92676	2	1
Not Reported	4	4
Grand Total	1,872	71

Complaints by Time of Operation





long beach airport



Long Beach Airport

4100 E. Donald Douglas Drive, Long Beach, CA 90808

www.lgb.org • lgbapt@longbeach.gov

Administration • (562) 570-2619