





long beach
airport

where the going is easy®

Date: May 11, 2021
To: Thomas B. Modica, City Manager 
From: Cynthia Guidry, Director, Long Beach Airport 
For: Mayor and Members of the City Council
Subject: **Long Beach Airport Monthly Noise Report for February 2021**

Attached is the Long Beach Airport Monthly Noise Report for the month of February 2021.

If you have any questions or require additional information, please contact me at (562) 570-2605.

ATTACHMENT

CC: CHARLES PARKIN, CITY ATTORNEY
LAURA L. DOUD, CITY AUDITOR
DOUGLAS HAUBERT, CITY PROSECUTOR
LINDA TATUM, ASSISTANT CITY MANAGER
KEVIN J. JACKSON, DEPUTY CITY MANAGER
TERESA CHANDLER, DEPUTY CITY MANAGER
REBECCA GUZMAN GARNER, ADMINISTRATIVE DEPUTY CITY MANAGER

Airport Advisory Commission

Alvaro Castillo
Chair

Wayne Chaney Sr.
Vice Chair

Jeffrey Anderson

Christine Bos

Robert L. Duarte Jr.

Katie Larson

Rita Nayak

Miles Nevin

Geetanjali Reuben

Airport Management

Cynthia Guidry
Director

Juan López-Ríos
Deputy Airport Director

Ken Mason
Executive Assistant

Claudia Lewis
Manager of Administration
& Finance

Ron Reeves
Airport Operations & Facilities
Manager

Ambi Thurai
Engineering Officer

Dale Worsham
Administrative Officer

Karl Zittel
Airside Operations Officer

Matthew Brookes
Airport Properties Officer

Scott Garrett
Facilities Management Officer

Mony Chhey
Financial Services Officer

Scott Korobkin
Superintendent of Safety and
Security

Kate Kuykendall
Public Affairs Officer

Ryan McMullan
Noise & Environmental Affairs
Officer



Long Beach Airport Monthly Noise Report February 2021

COMMERCIAL AIRCRAFT LATE NIGHT ACTIVITY
LGB Current Month & Calendar Year-To-Date Statistics (10 PM- 7AM)
February 2021

February				Calendar Year-To-Date		
10PM - 11PM Activity	2021	2020	Change	2021	2020	Change
Air Carrier & Commuter Operations	1,206	2,808	-57.1%	2,576	5,725	-55.0%
American/Mesa/SkyWest Airlines	0	0		0	0	
Delta/SkyWest/Compass Airlines	0	2	-100.0%	0	5	-100.0%
FedEx	0	0		0	0	
Hawaiian Airlines	1	0	100.0%	1	0	100.0%
JetBlue Airways	0	12	-100.0%	0	17	-100.0%
Southwest Airlines	0	0		0	0	
UPS	1	0	100.0%	1	0	100.0%
Subtotal 10PM-11PM	2	14	-85.7%	2	22	-90.9%
11PM- 7AM Activity	2021	2020	Change	2021	2020	Change
American/Mesa/SkyWest Airlines	0	0		0	0	
Delta/SkyWest/Compass Airlines	0	0		0	0	
FedEx	0	0		0	0	
Hawaiian Airlines	0	0		0	1	-100.0%
JetBlue Airways	0	6	-100.0%	0	10	-100.0%
Southwest Airlines	0	0		0	0	
UPS	1	0	100.0%	1	0	100.0%
Subtotal 11PM-7AM	1	6	-83.3%	1	11	-90.9%
TOTAL	3	20	-85.0%	3	33	-90.9%

Notes:

0.2% (3 of 1,206) of total commercial operations occurred between 10pm - 7am.

0.1 flights - Nightly average for all late night (10:00 PM—7:00 AM) commercial flights, includes unanticipated delays.

0.04 flights - Nightly average for commercial flights after 11 PM.

AIRPORT NOISE VIOLATIONS						
LGB Current Month & Calendar Year-To-Date Statistics						
February 2021						
February				Calendar Year-To-Date		
Air Carrier Noise Violations	2021	2020	Change	2021	2020	Change
American/Mesa/SkyWest	0	0		0	0	
Delta/SkyWest/Compass	0	0		0	1	-100.0%
FedEx	0	0		0	0	
Hawaiian Airlines	0	0		0	1	-100.0%
JetBlue Airways	0	6	-100.0%	0	11	-100.0%
Southwest Airlines	0	0		0	0	
UPS	1	0	100.0%	1	0	100.0%
Subtotal	1	6	-83.3%	1	13	-92.3%
Commuter Noise Violations	2021	2020	Change	2021	2020	Change
American/Mesa/SkyWest	0	0		0	0	
Delta/SkyWest/Compass	0	0		0	0	
Subtotal	0	0		0	0	
Non-Commercial Noise Violations	2021	2020	Change	2021	2020	Change
All GA, Charter & Other	10	13	-23.1%	17	23	-26.1%
TOTAL	11	19	-42.1%	18	36	-50.0%
Monetary Fines	2021	2020		2021	2020	
Airport Surcharges	\$0	\$2,200		\$100	\$4,600	
Consent Decree	\$0	\$30,000		\$0	\$54,000	
TOTAL	\$0	\$32,200		\$100	\$58,600	

AIRPORT OPERATIONS						
LGB Current Month & Calendar Year-To-Date Statistics						
February 2021						
February				Calendar Year-To-Date		
Airport Operations (FAA)	2021	2020	Change	2021	2020	Change
Air Carrier + Commuter Carriers	1,206	2,808	-57.1%	2,576	5,725	-55.0%
Air Taxi + General Aviation	23,222	24,121	-3.7%	46,160	47,615	-3.1%
Military Operations	113	106	6.6%	226	195	15.9%
Total Aircraft Operations	24,541	27,035	-9.2%	48,962	53,535	-8.5%

Notes:

0.05% (8 of 24,428) of the Airport's total aircraft operations (Commercial & GA) resulted in an aircraft noise violation.

0.1% (1of 1,206) of the Airport's Commercial operations (Commercial & Commuter) resulted in an aircraft noise violation.

AIRCRAFT NOISE VIOLATORS

February 2021

OWNERNAME	DATE	TIME	A/D	RWY	FLIGHT #	A/C TYPE	ORIG/DEST	SEL	LIMIT	STATUS
Golden State Jet LLC	2/2/2021	6:26:27	A	30		BE40		92.9	90.0	VIO
TVPX Aircraft Solutions Inc. Trustee	2/3/2021	1:01:30	D	30		GALX		91.8	79.0	VIO
TVPX Aircraft Solutions Inc. Trustee	2/5/2021	0:30:05	D	30		GLF4		85.5	79.0	VIO
Private	2/6/2021	15:43:45	T	26R		C152		n/a	n/a	VIO
UPS	2/12/2021	23:21:50	D	30	UPS5504	B763	SDF	96.6	79.0	VIO
Private	2/18/2021	13:44:39	A	26R		C310		91.5	88.0	VIO
Private	2/20/2021	16:40:22	T	26L		P28A		n/a	n/a	VIO
Hogs Head Air I LLC	2/20/2021	23:53:10	A	30		GLF4		89.2	79.0	VIO
Jeffery and Weiss Holdings LLC	2/21/2021	16:18:44	T	26L		C172		n/a	n/a	VIO
Gulfstream GIV-1294 LLC	2/23/2021	23:29:01	A	30		GLF4		89.0	79.0	VIO
Private	2/27/2021	15:38:42	T	26R		C152		n/a	n/a	VIO

DEFINITIONS:

A/C Type — Aircraft Type

A — Arrival

D — Departure

RWY — Runway

SEL — SENEL — Single Event Noise Exposure Level (dBA)

VIO—Violation

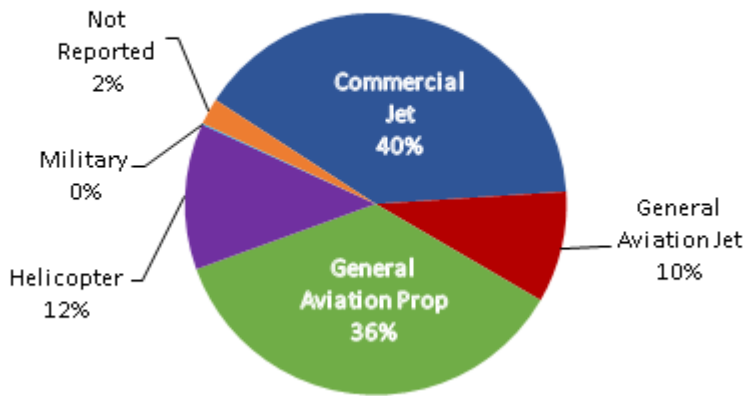
T—Touch and Go

VIO—Violation

LGB AIRCRAFT NOISE COMPLAINTS

February 2021

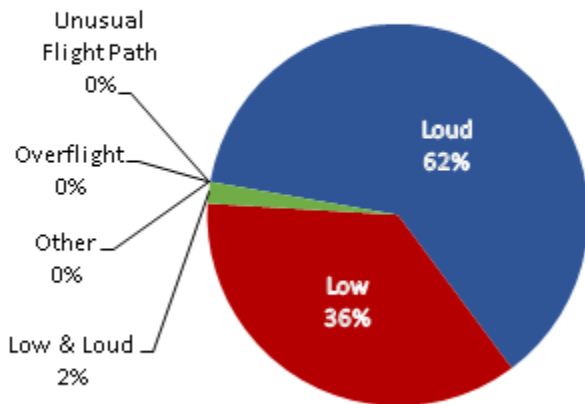
Complaints by Aircraft Types



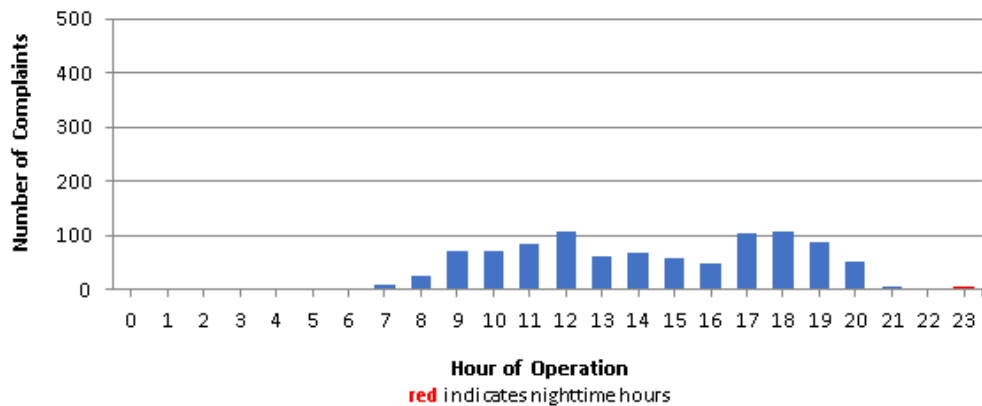
Complaints by Zip Code

Zip Code	Complaints	Units
90242	3	1
90277	1	1
90278	59	1
90712	3	1
90805	31	3
90807	25	9
90808	2	1
90815	10	3
91364	1	1
92612	119	1
92615	2	1
92626	266	1
92627	4	1
92646	3	1
92647	392	2
92648	43	6
92651	2	1
92656	6	1
92660	6	1
92661	2	1
92807	1	1
Not Reported	4	3
Grand Total	985	42

Complaints by Concern



Complaints by Time of Operation





long beach airport



Long Beach Airport

4100 E. Donald Douglas Drive, Long Beach, CA 90808

www.lgb.org • lgbapt@longbeach.gov

Administration • (562) 570-2619