



long beach
airport

where the going is easy®

Date: February 25, 2020
To: Thomas B. Modica, Acting City Manager 
From: Cynthia Guidry, Director, Long Beach Airport 
For: Mayor and Members of the City Council
Subject: **Long Beach Airport Monthly Noise Report for December 2019**

Attached is the Long Beach Airport Monthly Noise Report for the month of December 2019.

If you have any questions or require additional information, please contact me at (562) 570-2605.

ATTACHMENT

CC: CHARLES PARKIN, CITY ATTORNEY
LAURA L. DOUD, CITY AUDITOR
DOUGLAS HAUBERT, CITY PROSECUTOR
REBECCA GUZMAN GARNER, ACTING ASSISTANT CITY MANAGER
KEVIN J. JACKSON, DEPUTY CITY MANAGER
TERESA CHANDLER, INTERIM DEPUTY CITY MANAGER
AJAY KOLLURI, ACTING ADMINISTRATIVE DEPUTY TO THE CITY MANAGER

Airport Advisory Commission

Jeffrey Anderson
Chair

Wayne Chaney Sr.
Vice Chair

Alvaro Castillo

Katie Larson

Rita Nayak

Miles Nevin

Geetanjali Reuben

Jeff Rowe

Mary Sophia

Airport Management

Cynthia Guidry
Director

Juan López-Rios
Deputy Airport Director

Ken Mason
Executive Assistant

Claudia Lewis
Manager of Administration
& Finance

Ron Reeves
Airport Operations & Facilities
Manager

Ambi Thurai
Engineering Officer

Dale Worsham
Administrative Officer

Karl Zittel
Airsides Operations Officer

Matthew Brookes
Airport Properties Officer

Scott Garrett
Facilities Management Officer

Mony Chhey
Financial Services Officer

Scott Korobkin
Superintendent of Safety and
Security

Kate Kuykendall
Public Affairs Officer

Ryan McMullan
Noise & Environmental Affairs
Officer



Long Beach Airport Monthly Noise Report December 2019

COMMERCIAL AIRCRAFT LATE NIGHT ACTIVITY
LGB Current Month & Calendar Year-To-Date Statistics (10 PM- 7AM)
December 2019

December				Calendar Year-To-Date		
10PM - 11PM Activity	2019	2018	Change	2019	2018	Change
Air Carrier & Commuter Operations	3,005	2,644	13.7%	33,236	34,847	-4.6%
American/Mesa/SkyWest Airlines	0	0		15	29	-48.3%
Delta/SkyWest/Compass Airlines	2	3	-33.3%	28	22	27.3%
FedEx	0	0		0	0	
Hawaiian Airlines	2	0	200.0%	5	2	150.0%
JetBlue Airways	23	11	109.1%	128	302	-57.6%
Southwest Airlines	1	0	100.0%	10	10	0.0%
UPS	1	0	100.0%	1	1	0.0%
Subtotal 10PM-11PM	29	14	107.1%	187	366	-48.9%
11PM- 7AM Activity	2019	2018	Change	2019	2018	Change
American/Mesa/SkyWest Airlines	0	1	-100.0%	10	16	-37.5%
Delta/SkyWest/Compass Airlines	0	0		4	6	-33.0%
FedEx	0	0		1	0	100.0%
Hawaiian Airlines	1	0	100.0%	3	4	-25.0%
JetBlue Airways	16	5	220.0%	88	185	-52.4%
Southwest Airlines	0	0		0	0	
UPS	0	0		3	1	200.0%
Subtotal 11PM-7AM	17	6	183.3%	109	212	-48.6%
TOTAL	46	20	130.0%	296	578	-48.8%

Notes:

1.5% (46 of 3,005) of total commercial operations occurred between 10pm - 7am.

1.5 flights - Nightly average for all late night (10:00 PM—7:00 AM) commercial flights, includes unanticipated delays.

0.6 flights - Nightly average for commercial flights after 11 PM.

Of the 46 Late-Night Operations, 37% were due to mechanical issues, 15% were due to poor weather conditions, 15% were due to air traffic control conditions, 11% were due to staffing-related issues, 9% were due to unknown reasons, 7% were due to ferry flight operations and 7% occurred during the five-minute grace period.

AIRPORT NOISE VIOLATIONS						
LGB Current Month & Calendar Year-To-Date Statistics						
December 2019						
December				Calendar Year-To-Date		
Air Carrier Noise Violations	2019	2018	Change	2019	2018	Change
American/Mesa Airlines	0	1	-100.0%	12	18	-33.3%
Delta/SkyWest/Compass	0	0		4	5	-20.0%
FedEx	0	0		1	0	100.0%
Hawaiian Airlines	0	0		2	4	-50.0%
JetBlue Airways	20	7	185.7%	96	212	-54.7%
Southwest Airlines	0	0		1	0	100.0%
UPS	0	0		1	1	0.0%
Subtotal	20	8	150.0%	117	240	-51.3%
Commuter Noise Violations	2019	2018	Change	2019	2018	Change
American/SkyWest Airlines	0	0		0	0	
Delta/SkyWest/Compass	0	0		0	0	
Subtotal	0	0		0	0	
Non-Commercial Noise Violations	2019	2018	Change	2019	2018	Change
All GA, Charter & Other	14	16	-12.5%	150	138	8.7%
TOTAL	34	24	41.7%	267	378	-29.4%
Monetary Fines	2019	2018		2019	2018	
Airport Surcharges	\$6,100	\$3,100		\$40,100	\$65,600	
Consent Decree	\$96,000	\$24,000		\$492,000	\$984,000	
TOTAL	\$102,100	\$27,100		\$532,100	\$1,049,600	

AIRPORT OPERATIONS						
LGB Current Month & Calendar Year-To-Date Statistics						
December 2019						
December				Calendar Year-To-Date		
Airport Operations (FAA)	2019	2018	Change	2019	2018	Change
Air Carrier + Commuter Carriers	3,005	2,644	13.7%	33,236	34,847	-4.6%
Air Taxi + General Aviation	21,113	20,216	4.4%	287,549	238,157	20.7%
Military Operations	84	95	-11.6%	1,199	1,421	-15.6%
Total Aircraft Operations	24,202	22,955	5.4%	321,984	274,425	17.3%

Notes:

0.1% (34 of 24,202) of the Airport's total aircraft operations (Commercial & GA) resulted in an aircraft noise violation.
0.7% (20 of 3,005) of the Airport's Commercial operations (Commercial & Commuter) resulted in an aircraft noise violation.

AIRCRAFT NOISE VIOLATORS

December 2019

OWNERNAME	DATE	TIME	A/D	RWY	FLIGHT #	A/C TYPE	ORIG/DEST	SEL	LIMIT	STATUS
Sunrider Corporation	12/1/2019	14:48:17	D	30		MD87		104.4	101.5	VIO
H&S Air LLC	12/1/2019	23:25:16	A	30		GLF4		81.1	79.0	VIO
A & L Hawker LLC	12/2/2019	23:23:14	A	30		BE40		82.4	79.0	VIO
Business Jet Solutions	12/2/2019	23:41:14	A	30		CL30		89.1	79.0	VIO
JetBlue Airways	12/3/2019	0:25:34	A	30	JBU679	A320	LAS	93.8	79.0	VIO + Alt Enf
JetBlue Airways	12/3/2019	1:14:12	A	30	JBU405	A320	BOS	93.9	79.0	VIO + Alt Enf
JetBlue Airways	12/3/2019	22:25:43	D	30	JBU14	A320	JFK	95.8	90.0	VIO
JetBlue Airways	12/3/2019	23:30:11	A	30	JBU1925	A320	SJC	91.8	79.0	VIO + Alt Enf
JetBlue Airways	12/4/2019	1:27:52	A	30	JBU405	A320	BOS	92.1	79.0	VIO + Alt Enf
JetBlue Airways	12/4/2019	23:32:45	D	30	JBU180	A320	LAS	89.7	79.0	VIO + Alt Enf
JetBlue Airways	12/5/2019	3:00:22	MA	30	JBU679	A320	LAS	92.5	79.0	VIO + Alt Enf
TTX Holdings LLC	12/7/2019	4:46:04	A	30		C525		85.3	79.0	VIO
JetBlue Airways	12/8/2019	6:42:27	D	30	JBU1136	A320	SFO	92.4	90.0	VIO + Alt Enf
MCB Aviation LLC	12/9/2019	6:48:57	D	30		FA20		92.5	90.0	VIO
JetBlue Airways	12/11/2019	22:09:58	D	30	JBU14	A320	JFK	95.3	90.0	VIO
JetBlue Airways	12/11/2019	22:29:19	A	30	JBU405	A320	BOS	93.2	90.0	VIO
Norton Packaging Inc.	12/11/2019	23:03:05	D	30		C25A		86.0	79.0	VIO
Wilmington Trust Co. Trustees	12/11/2019	23:46:42	A	30		H25B		88.7	79.0	VIO
McColee Partners LLC	12/13/2019	23:13:57	D	30		G150		82.2	79.0	VIO
JetBlue Airways	12/14/2019	1:10:21	A	30	JBU679	A320	LAS	92.8	79.0	VIO + Alt Enf
JetBlue Airways	12/18/2019	0:33:24	A	30	JBU405	A320	BOS	91.3	79.0	VIO + Alt Enf
Wilmington Trust Co. Trustees	12/19/2019	4:55:56	D	30		C560		84.2	79.0	VIO
Private	12/22/2019	7:50:29	D	26R		BE35		96.3	92.0	VIO
Meruelo Group LLC	12/23/2019	0:13:22	A	30		GLF5		88.4	79.0	VIO
Belagrasco Aviation II LLC	12/23/2019	6:22:21	D	12		GLF4		93.6	90.0	VIO
JetBlue Airways	12/24/2019	23:05:45	A	30	JBU2507	A320	SEA	93.7	79.0	VIO + Alt Enf
JetBlue Airways	12/24/2019	23:20:17	A	30	JBU1925	A320	SJC	92.9	79.0	VIO + Alt Enf
JetBlue Airways	12/25/2019	23:10:41	A	12	JBU43	A320	RNO	95.8	79.0	VIO + Alt Enf
JetBlue Airways	12/25/2019	23:42:49	D	12	JBU504	A320	BOS	93.1	79.0	VIO + Alt Enf

AIRCRAFT NOISE VIOLATORS

December 2019

OWNERNAME	DATE	TIME	A/D	RWY	FLIGHT #	A/C TYPE	ORIG/DEST	SEL	LIMIT	STATUS
JetBlue Airways	12/26/2019	0:17:20	D	12	JBU14	A320	JFK	93.8	79.0	VIO + Alt Enf
JetBlue Airways	12/26/2019	1:15:11	A	30	JBU531	A320	SLC	93.3	79.0	VIO + Alt Enf
JetBlue Airways	12/26/2019	1:20:02	A	30	JBU679	A320	LAS	92.9	79.0	VIO + Alt Enf
Cassill Aircraft Leasing Inc.	12/27/2019	5:13:36	D	30		BE36		85.5	79.0	VIO
JetBlue Airways	12/28/2019	22:22:13	D	30	JBU504	A320	BOS	94.0	90.0	VIO

DEFINITIONS:

A/C Type — Aircraft Type

RWY — Runway

A/D/MA— Arrival / Departure/Missed Approach

SEL — SENEL — Single Event Noise Exposure Level (dBA)

ALT ENF — Alternative Enforcement

VIO—Violation

AIR CARRIER NOISE BUDGET PERFORMANCE

January 2019 - December 2019

RMT #	NOISE BUDGET	ACTUAL	PERCENT BUDGET USED
9	70.7	48.9	69.2%
10	84.6	69.1	81.7%

Source: Long Beach Airport Staff Calculations

DEFINITIONS:

RMT — Remote Monitoring Terminal

TOTAL NOISE BUDGET PERFORMANCE

January 2019 - December 2019

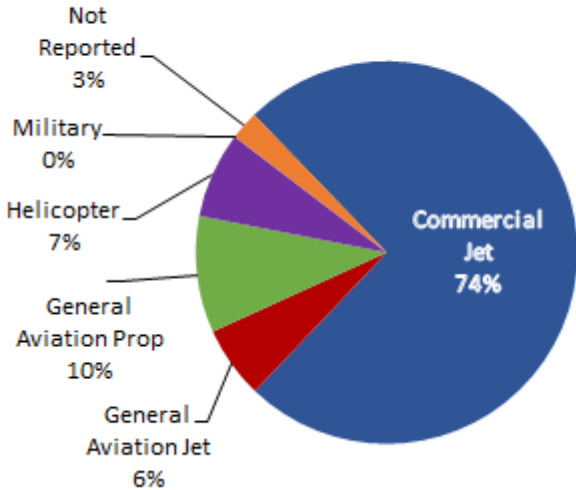
RMT #	NOISE BUDGET	ACTUAL	PERCENT BUDGET USED
9	102.7	59.6	58.0%
10	120.9	83.1	68.7%

Source: Long Beach Airport Staff Calculations

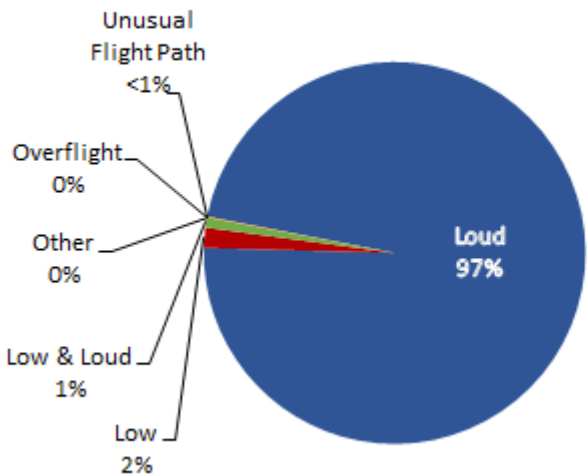
LGB AIRCRAFT NOISE COMPLAINTS

December 2019

Complaints by Aircraft Types



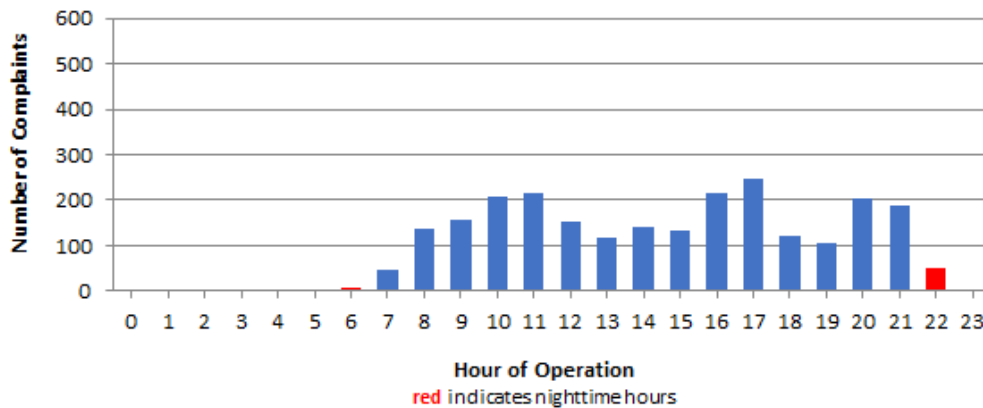
Complaints by Concern



Complaints by Zip Code

Zip Code	Complaints	Units
90254	2	1
90278	263	3
90505	24	1
90740	5	1
90803	1	1
90805	19	1
90806	1	1
90807	30	10
90808	13	1
90815	2	2
92612	12	1
92615	10	1
92625	5	1
92626	476	2
92627	10	2
92646	2	1
92647	781	4
92648	610	14
92649	164	5
92653	1	1
92656	6	2
92660	6	4
92661	1	1
92677	4	1
92807	11	2
92845	1	1
92869	2	2
Not Reported	2	2
Grand Total	2,464	69

Complaints by Time of Operation



[THIS PAGE INTENTIONALLY LEFT BLANK]



long beach airport



Long Beach Airport

4100 E. Donald Douglas Drive, Long Beach, CA 90808

www.lgb.org • lgbapt@longbeach.gov

Administration • (562) 570-2619