



long beach
airport

where the going is easy®

Date: April 27, 2020
To: Thomas B. Modica, City Manager *T.M.*
From: Cynthia Guidry, Director, Long Beach Airport *CG*
For: Mayor and Members of the City Council
Subject: **Long Beach Airport Monthly Noise Report for February 2020**

Attached is the Long Beach Airport Monthly Noise Report for the month of February 2020.

If you have any questions or require additional information, please contact me at (562) 570-2605.

ATTACHMENT

CC: CHARLES PARKIN, CITY ATTORNEY
LAURA L. DOUD, CITY AUDITOR
DOUGLAS HAUBERT, CITY PROSECUTOR
REBECCA GUZMAN GARNER, ACTING ASSISTANT CITY MANAGER
KEVIN J. JACKSON, DEPUTY CITY MANAGER
TERESA CHANDLER, INTERIM DEPUTY CITY MANAGER
AJAY KOLLURI, ACTING ADMINISTRATIVE DEPUTY TO THE CITY MANAGER

Airport Advisory Commission

Jeffrey Anderson
Chair

Wayne Chaney Sr.
Vice Chair

Alvaro Castillo

Katie Larson

Rita Nayak

Miles Nevin

Geetanjali Reuben

Jeff Rowe

Mary Sophia

Airport Management

Cynthia Guidry
Director

Juan López-Ríos
Deputy Airport Director

Ken Mason
Executive Assistant

Claudia Lewis
Manager of Administration
& Finance

Ron Reeves
Airport Operations & Facilities
Manager

Ambi Thurai
Engineering Officer

Dale Worsham
Administrative Officer

Karl Zittel
Airsides Operations Officer

Matthew Brookes
Airport Properties Officer

Scott Garrett
Facilities Management Officer

Mony Chhey
Financial Services Officer

Scott Korobkin
Superintendent of Safety and
Security

Kate Kuykendall
Public Affairs Officer

Ryan McMullan
Noise & Environmental Affairs
Officer



long beach
airport



Long Beach Airport Monthly Noise Report February 2020

COMMERCIAL AIRCRAFT LATE NIGHT ACTIVITY
LGB Current Month & Calendar Year-To-Date Statistics (10 PM- 7AM)
February 2020

February				Calendar Year-To-Date		
10PM - 11PM Activity	2020	2019	Change	2020	2019	Change
Air Carrier & Commuter Operations	2,808	2,301	22.0%	5,725	4,886	17.2%
American/Mesa/SkyWest Airlines	0	0		0	2	-100.0%
Delta/SkyWest/Compass Airlines	2	5	-60.0%	5	6	-16.7%
FedEx	0	0		0	0	
Hawaiian Airlines	0	0		0	2	-100.0%
JetBlue Airways	12	22	-45.5%	17	31	-45.2%
Southwest Airlines	0	2	-100.0%	0	2	-100.0%
UPS	0	0		0	0	
Subtotal 10PM-11PM	14	29	-51.7%	22	43	-48.8%
11PM- 7AM Activity	2020	2019	Change	2020	2019	Change
American/Mesa/SkyWest Airlines	0	0		0	0	
Delta/SkyWest/Compass Airlines	0	0		0	0	
FedEx	0	0		0	0	
Hawaiian Airlines	0	0		1	1	0.0%
JetBlue Airways	6	11	-45.5%	10	18	-44.4%
Southwest Airlines	0	0		0	0	
UPS	0	0		0	0	
Subtotal 11PM-7AM	6	11	-45.5%	11	19	-42.1%
TOTAL	20	40	-50.0%	33	62	-46.8%

Notes:

0.7% (20 of 2,808) of total commercial operations occurred between 10pm - 7am.

0.7 flights - Nightly average for all late night (10:00 PM—7:00 AM) commercial flights, includes unanticipated delays.

0.2 flights - Nightly average for commercial flights after 11 PM.

Of the 20 Late-Night Operations, 45% were due to poor weather conditions, 30% were due to mechanical issues, 10% were due to unknown reasons, 5% were due to staffing-related issues, 5% were due to delayed airline dispatch release issues and 5% occurred during the five-minute grace period.

AIRPORT NOISE VIOLATIONS
LGB Current Month & Calendar Year-To-Date Statistics
February 2020

February				Calendar Year-To-Date		
Air Carrier Noise Violations	2020	2019	Change	2020	2019	Change
American/Mesa Airlines	0	0		0	1	-100.0%
Delta/SkyWest/Compass	0	0		1	0	100.0%
FedEx	0	0		0	0	
Hawaiian Airlines	0	0		1	1	0.0%
JetBlue Airways	6	11	-45.5%	11	17	-35.3%
Southwest Airlines	0	0		0	0	
UPS	0	0		0	0	
Subtotal	6	11	-45.5%	13	19	-31.6%
Commuter Noise Violations	2020	2019	Change	2020	2019	Change
American/SkyWest Airlines	0	0		0	0	
Delta/SkyWest/Compass	0	0		0	0	
Subtotal	0	0		0	0	
Non-Commercial Noise Violations	2020	2019	Change	2020	2019	Change
All GA, Charter & Other	13	13	0.0%	23	17	35.3%
TOTAL	19	24	-20.8%	36	36	0.0%
Monetary Fines	2020	2019		2020	2019	
Airport Surcharges	\$2,200	\$4,500		\$4,600	\$7,200	
Consent Decree	\$30,000	\$60,000		\$54,000	\$96,000	
TOTAL	\$32,200	\$64,500		\$58,600	\$103,200	

AIRPORT OPERATIONS
LGB Current Month & Calendar Year-To-Date Statistics
February 2020

February				Calendar Year-To-Date		
Airport Operations (FAA)	2020	2019	Change	2020	2019	Change
Air Carrier + Commuter Carriers	2,808	2,301	22.0%	5,725	4,886	17.2%
Air Taxi + General Aviation	24,121	20,957	15.1%	47,615	42,914	11.0%
Military Operations	106	113	-6.2%	195	232	-15.9%
Total Aircraft Operations	27,035	23,371	15.7%	53,535	48,032	11.5%

Notes:

0.07% (19 of 26,929) of the Airport's total aircraft operations (Commercial & GA) resulted in an aircraft noise violation.
0.2% (6 of 2,808) of the Airport's Commercial operations (Commercial & Commuter) resulted in an aircraft noise violation.

AIRCRAFT NOISE VIOLATORS

February 2020

OWNERNAME	DATE	TIME	A/D	RWY	FLIGHT #	A/C TYPE	ORIG/DEST	SEL	LIMIT	STATUS
JetBlue Airways	2/2/2020	1:21:59	A	30	JBU347	A320	OAK	91.7	79.0	VIO + Alt Enf
West Coast Charters LLC	2/2/2020	23:01:33	A	30		B350		91.2	79.0	VIO
JetBlue Airways	2/2/2020	23:26:29	A	30	JBU679	A320	LAS	94.4	79.0	VIO + Alt Enf
JetBlue Airways	2/3/2020	1:13:24	A	30	JBU347	A320	OAK	91.5	79.0	VIO + Alt Enf
FlyBoys Nevada Inc.	2/4/2020	5:54:46	D	26L		P28A		84.4	N/A	VIO
Silver Creek Aviation Services	2/5/2020	5:33:09	D	30		C206		89.6	79.0	VIO
Private	2/6/2020	14:16:23	D	26R		GC-1		97.5	92.0	VIO
Moran Consulting Corp.	2/6/2020	14:39:05	A	26R		BE35		90.2	88.0	VIO
South Bay Aviation Inc.	2/7/2020	15:04:34	A	26R		BE76		90.9	88.0	VIO
AVITRANS INC.	2/9/2020	13:31:33	D	8L		SR20		91.7	88.0	VIO
TVPX ARS INC TRUSTEE	2/11/2020	5:32:48	A	30		GLF6		89.3	79.0	VIO
JetBlue Airways	2/15/2020	22:22:24	A	30	JBU2107	A320	SEA	94.8	90.0	VIO
Private	2/15/2020	23:34:19	A	30		PA44		82.6	79.0	VIO
Snow Peak Ventures LLC	2/20/2020	6:02:27	A	30		C56X		93.2	90.0	VIO
Paradigm Air Carriers Inc.	2/22/2020	23:57:49	A	30		B752		96.3	79.0	VIO
Paradigm Air Carriers Inc.	2/23/2020	23:20:10	D	30		B752		90.6	79.0	VIO
JetBlue Airways	2/23/2020	23:56:50	A	30	JBU2107	A320	SEA	92.8	79.0	VIO + Alt Enf
Nevada 5 Aviation LLC	2/24/2020	5:19:56	D	30		H25B		85.6	79.0	VIO
JetBlue Airways	2/26/2020	23:35:56	A	30	JBU347	A320	OAK	90.0	79.0	VIO + Alt Enf

DEFINITIONS:

A/C Type — Aircraft Type

RWY — Runway

A/D — Arrival / Departure

SEL — SENEL — Single Event Noise Exposure Level (dBA)

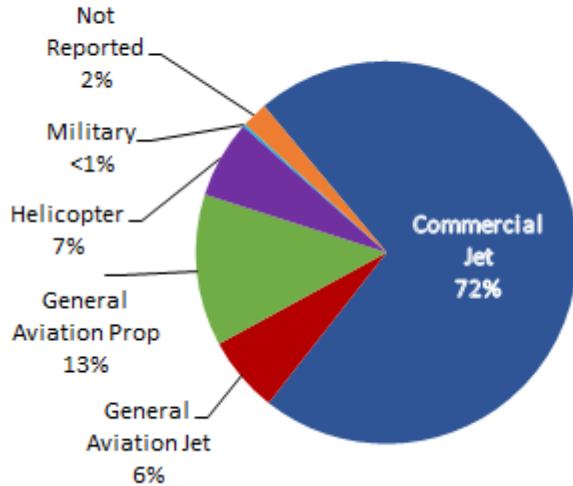
ALT ENF — Alternative Enforcement

VIO — Violation

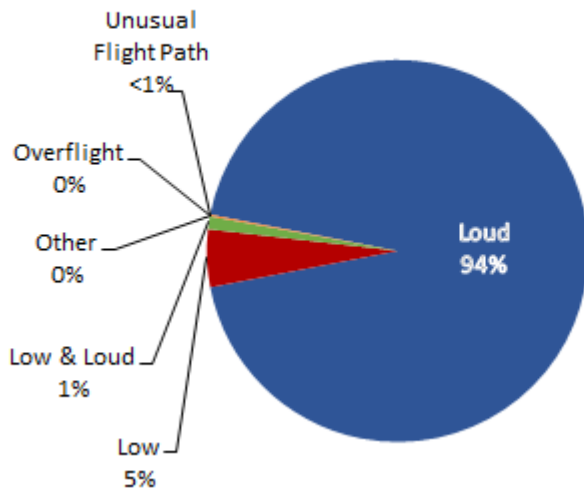
LGB AIRCRAFT NOISE COMPLAINTS

February 2020

Complaints by Aircraft Types



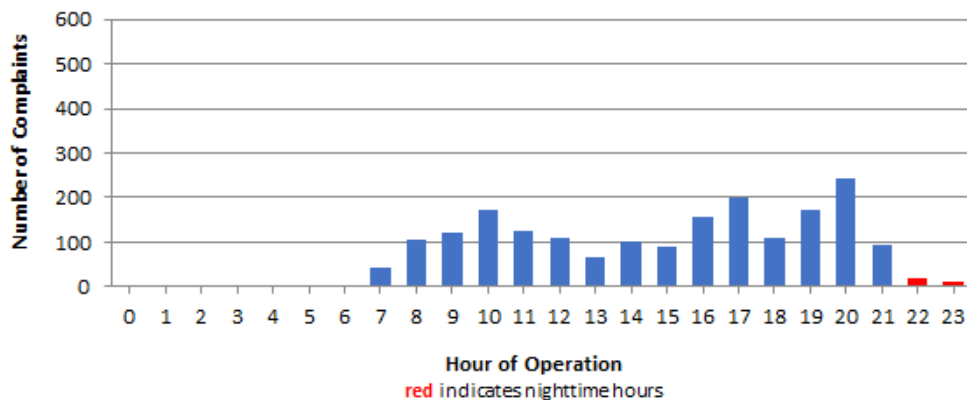
Complaints by Concern



Complaints by Zip Code

Zip Code	Complaints	Units
90254	3	2
90278	89	2
90712	2	2
90805	17	1
90807	15	5
90808	3	3
90815	1	1
92612	42	1
92615	8	1
92626	332	1
92627	4	2
92629	2	1
92646	1	1
92647	702	5
92648	622	14
92649	35	6
92651	4	1
92653	7	1
92656	14	2
92660	25	2
92662	1	1
92676	8	1
92677	2	1
92807	4	2
92869	3	2
Not Reported	2	2
Grand Total	1,948	63

Complaints by Time of Operation





long beach airport



Long Beach Airport

4100 E. Donald Douglas Drive, Long Beach, CA 90808

www.lgb.org • lgbapt@longbeach.gov

Administration • (562) 570-2619