



long beach
airport

where the going is easy®

Date: December 19, 2019
To: Thomas B. Modica, Acting City Manager 
From: Cynthia Guidry, Director, Long Beach Airport 
For: Mayor and Members of the City Council
Subject: **Long Beach Airport Monthly Noise Report for October 2019**

Attached is the Long Beach Airport Monthly Noise Report for the month of October 2019.

If you have any questions or require additional information, please contact me at (562) 570-2605.

ATTACHMENT

CC: CHARLES PARKIN, CITY ATTORNEY
LAURA L. DOUD, CITY AUDITOR
DOUGLAS HAUBERT, CITY PROSECUTOR
REBECCA GUZMAN GARNER, ACTING ASSISTANT CITY MANAGER
KEVIN J. JACKSON, DEPUTY CITY MANAGER
TERESA CHANDLER, INTERIM DEPUTY CITY MANAGER
ANDREW VIALPANDO, ACTING ADMINISTRATIVE DEPUTY TO THE CITY MANAGER

Airport Advisory Commission

Jeffrey Anderson
Chair

Wayne Chaney Sr.
Vice Chair

Alvaro Castillo

Katie Larson

Rita Nayak

Miles Nevin

Geetanjali Reuben

Jeff Rowe

Mary Sophiea

Airport Management

Cynthia Guidry
Director

Juan López-Ríos
Deputy Airport Director

Ken Mason
Executive Assistant

Claudia Lewis
Manager of Administration
& Finance

Ron Reeves
Airport Operations & Facilities
Manager

Ambi Thurai
Engineering Officer

Dale Worsham
Administrative Officer

Karl Zittel
Airside Operations Officer

Matthew Brookes
Airport Properties Officer

Scott Garrett
Facilities Management Officer

Mony Chhey
Financial Services Officer

Scott Korobkin
Superintendent of Safety and
Security

Kate Kuykendall
Public Affairs Officer

Ryan McMullan
Noise & Environmental Affairs
Officer



long beach
airport



Long Beach Airport Monthly Noise Report October 2019

COMMERCIAL AIRCRAFT LATE NIGHT ACTIVITY
LGB Current Month & Calendar Year-To-Date Statistics (10 PM- 7AM)
October 2019

October				Calendar Year-To-Date		
10PM - 11PM Activity	2019	2018	Change	2019	2018	Change
Air Carrier & Commuter Operations	2,813	2,614	7.6%	27,377	29,672	-7.7%
American/Mesa/SkyWest Airlines	1	0	100.0%	15	29	-48.3%
Delta/SkyWest/Compass Airlines	0	1	-100.0%	23	18	27.8%
FedEx	0	0		0	0	
Hawaiian Airlines	0	1	-100.0%	3	2	50.0%
JetBlue Airways	5	4	25.0%	97	283	-65.7%
Southwest Airlines	1	1	0.0%	9	10	-10.0%
UPS	0	0		0	0	
Subtotal 10PM-11PM	7	7	0.0%	147	342	-57.0%
11PM- 7AM Activity	2019	2018	Change	2019	2018	Change
American/Mesa/SkyWest Airlines	0	0		10	15	-33.3%
Delta/SkyWest/Compass Airlines	0	0		4	5	-20.0%
FedEx	0	0		0	0	
Hawaiian Airlines	0	2	-100.0%	2	3	-33.3%
JetBlue Airways	3	7	-57.1%	63	173	-63.6%
Southwest Airlines	0	0		0	0	
UPS	0	0		3	0	300.0%
Subtotal 11PM-7AM	3	9	-66.7%	82	196	-58.2%
TOTAL	10	16	-37.5%	229	538	-57.4%

Notes:

0.4% (10 of 2,813) of total commercial operations occurred between 10pm - 7am.

0.3 flights - Nightly average for all late night (10:00 PM—7:00 AM) commercial flights, includes unanticipated delays.

0.1 flights - Nightly average for commercial flights after 11 PM.

Of the 10 Late-Night Operations, 40% were due to mechanical issues, 20% were due to staffing-related issues, 10% were due to air traffic control conditions, 10% were due to poor weather conditions, 10% were due to medical reasons and 10% were due to unknown reasons.

AIRPORT NOISE VIOLATIONS						
LGB Current Month & Calendar Year-To-Date Statistics						
October 2019						
October				Calendar Year-To-Date		
Air Carrier Noise Violations	2019	2018	Change	2019	2018	Change
American/Mesa Airlines	0	0		12	17	-29.4%
Delta/SkyWest/Compass	0	0		4	5	-20.0%
FedEx	0	0		0	0	
Hawaiian Airlines	0	2	-100.0%	2	3	-33.3%
JetBlue Airways	3	6	-50.0%	66	201	-67.2%
Southwest Airlines	0	0		1	0	100.0%
UPS	0	0		1	0	100.0%
Subtotal	3	8	-62.5%	86	226	-61.9%
Commuter Noise Violations	2019	2018	Change	2019	2018	Change
American/SkyWest Airlines	0	0		0	0	
Delta/SkyWest/Compass	0	0		0	0	
Subtotal	0	0		0	0	
Non-Commercial Noise Violations	2019	2018	Change	2019	2018	Change
All GA, Charter & Other	11	12	-8.3%	130	112	16.1%
TOTAL	14	20	-30.0%	216	338	-36.1%
Monetary Fines	2019	2018		2019	2018	
Airport Surcharges	\$1,700	\$3,000		\$31,300	\$60,300	
Consent Decree	\$18,000	\$36,000		\$360,000	\$936,000	
TOTAL	\$19,700	\$39,000		\$391,300	\$996,300	

AIRPORT OPERATIONS						
LGB Current Month & Calendar Year-To-Date Statistics						
October 2019						
October				Calendar Year-To-Date		
Airport Operations (FAA)	2019	2018	Change	2019	2018	Change
Air Carrier + Commuter Carriers	2,813	2,614	7.6%	27,377	29,672	-7.7%
Air Taxi + General Aviation	28,441	21,203	34.1%	243,890	196,884	23.9%
Military Operations	98	109	-10.1%	1,022	1,235	-17.2%
Total Aircraft Operations	31,352	23,926	31.0%	272,289	227,791	19.5%

Notes:

0.04% (14 of 31,254) of the Airport's total aircraft operations (Commercial & GA) resulted in an aircraft noise violation.
0.1% (3 of 2,813) of the Airport's Commercial operations (Commercial & Commuter) resulted in an aircraft noise violation.

AIRCRAFT NOISE VIOLATORS

October 2019

OWNERNAME	DATE	TIME	A/D	RWY	FLIGHT #	A/C TYPE	ORIG/DEST	SEL	LIMIT	STATUS
Private	10/2/2019	11:19:02	A	26R		PA44		90.5	88.0	VIO
Private	10/3/2019	11:11:11	A	26R		PA44		90.8	88.0	VIO
M13 Holding LLC	10/3/2019	15:42:06	A	26R		PC12		90.7	88.0	VIO
JetBlue Airways	10/3/2019	23:15:10	A	30	JBU347	A320	OAK	93.5	79.0	VIO + Alt Enf
Capt. Kids Inc.	10/4/2019	23:42:53	A	30		PA28		84.7	79.0	VIO
NetJets Inc.	10/18/2019	6:27:27	D	30		CL35		92.7	90.0	VIO
Vandelay America LLC	10/18/2019	10:04:45	D	26R		T6		104.7	92.0	VIO
Swift Air LLC	10/18/2019	23:23:54	D	30		B734		96.2	79.0	VIO
Keegan Organization LLC	10/21/2019	23:41:29	A	30		C25C		83.6	79.0	VIO
Svetfur Aviation LLC	10/22/2019	20:40:22	A	26R		C414		91.1	88.0	VIO
Go Far Aviation LLC	10/23/2019	8:39:43	D	26R		C525		94.9	92.0	VIO
JetBlue Airways	10/28/2019	2:36:10	A	30	JBU405	A320	ABQ	92.8	79.0	VIO + Alt Enf
JetBlue Airways	10/29/2019	0:56:52	A	30	JBU405	A320	SLC	93.7	79.0	VIO + Alt Enf
Platinum Equity LLC	10/29/2019	1:07:57	A	30		G650		86.8	79.0	VIO

DEFINITIONS:

A/C Type — Aircraft Type

RWY — Runway

A/D— Arrival / Departure

SEL — SENEL — Single Event Noise Exposure Level (dBA)

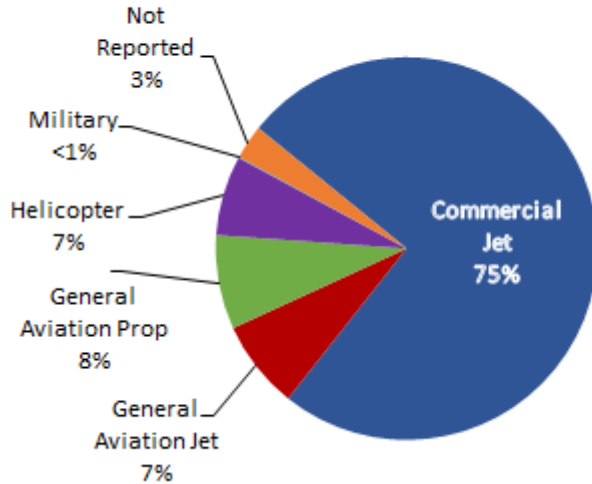
ALT ENF — Alternative Enforcement

VIO—Violation

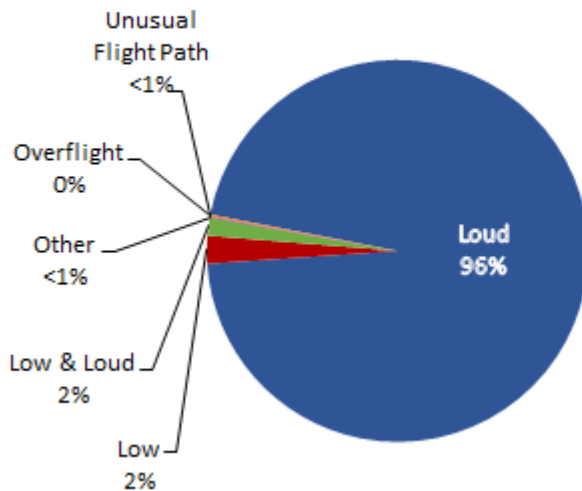
LGB AIRCRAFT NOISE COMPLAINTS

October 2019

Complaints by Aircraft Types



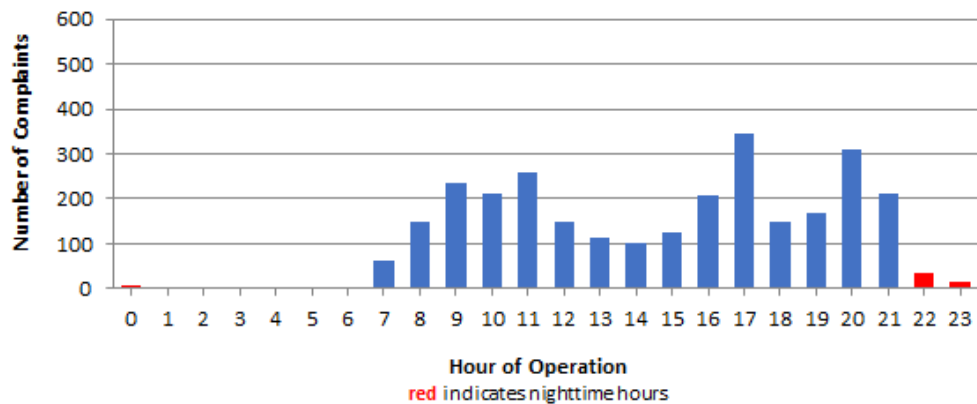
Complaints by Concern



Complaints by Zip Code

Zip Code	Complaints	Units
90278	323	3
90505	22	1
90731	1	1
90740	6	2
90803	1	1
90805	12	1
90807	42	14
90808	13	5
90815	5	4
92612	20	1
92615	4	1
92625	1	1
92626	403	1
92627	14	3
92629	3	1
92646	6	1
92647	661	5
92648	626	17
92649	664	4
92656	3	1
92660	7	5
92661	3	1
92662	3	3
92676	3	1
92807	6	2
92867	4	1
92869	1	1
Not Reported	8	6
Grand Total	2,865	88

Complaints by Time of Operation





long beach airport



Long Beach Airport

4100 E. Donald Douglas Drive, Long Beach, CA 90808

www.lgb.org • lgbapt@longbeach.gov

Administration • (562) 570-2619